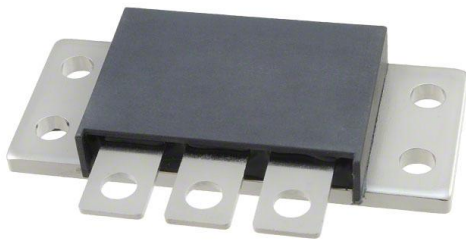


FST16030L Datasheet

www.digi-electronics.com



<https://www.DiGi-Electronics.com>

DiGi Electronics Part Number	FST16030L-DG
Manufacturer	GeneSiC Semiconductor
Manufacturer Product Number	FST16030L
Description	DIODE MOD SCHOTT 30V 80A TO249AB
Detailed Description	Diode Array 1 Pair Common Cathode 30 V 80A Chassis Mount TO-249AB

This model FST16030L is available at DiGi Electronics.

DiGi Electronics offers a global database of semiconductor and electronic component datasheets.

We welcome your inquiries regarding pricing, lead time, or other product-related questions.

 [Request a Quote](#)

 [Datasheet Search](#)



Tel: +00 852-30501935

RFQ Email: Info@DiGi-Electronics.com

DiGi is a global authorized distributor of electronic components.

Purchase and inquiry

Manufacturer Product Number:

FST16030L

Series:

-

Diode Configuration:

1 Pair Common Cathode

Voltage - DC Reverse (Vr) (Max):

30 V

Voltage - Forward (Vf) (Max) @ If:

600 mV @ 80 A

Current - Reverse Leakage @ Vr:

1 mA @ 30 V

Mounting Type:

Chassis Mount

Supplier Device Package:

TO-249AB

Manufacturer:

GeneSiC Semiconductor

Product Status:

Obsolete

Technology:

Schottky

Current - Average Rectified (Io) (per Diode):

80A

Speed:

Fast Recovery \leq 500ns, $>$ 200mA (Io)

Operating Temperature - Junction:

-55°C ~ 150°C

Package / Case:

TO-249AB

Environmental & Export classification

Moisture Sensitivity Level (MSL):

1 (Unlimited)

HTSUS:

8541.10.0080

ECCN:

EAR99

OUR CERTIFICATE

DiGi provide top-quality products and perfect service for customer worldwide through standardization, technological innovation and continuous improvement. DiGi through third-party certification, we stricly control the quality of products and services. Welcome your RFQ to

Email: Info@DiGi-Electronics.com



Tel: +00 852-30501935

RFQ Email: Info@DiGi-Electronics.com

DiGi is a global authorized distributor of electronic components.