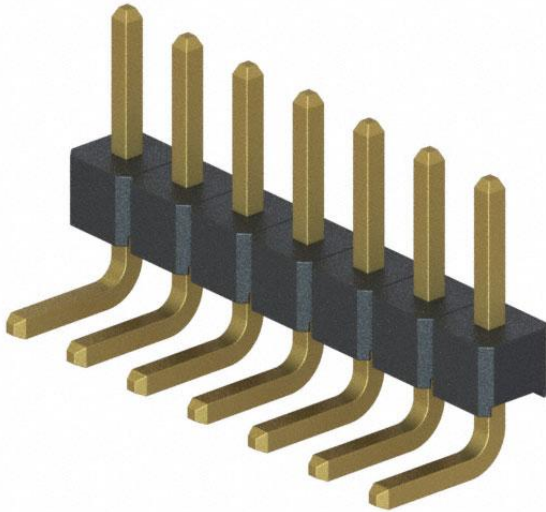


www.digi-electronics.com



M22-2530705 Datasheet

DiGi Electronics Part Number M22-2530705-DG

Manufacturer [Harwin Inc.](#)

Manufacturer Product Number M22-2530705

Description CONN HEADER R/A 7POS 2MM

<https://www.DiGi-Electronics.com>

Detailed Description

Connector Header Through Hole, Right Angle 7 pos

This model M22-2530705 is available at DiGi Electronics. Pitch: 0.079" (2.00mm)

DiGi Electronics offers a global database of semiconductor and electronic component datasheets.

We welcome your inquiries regarding pricing, lead time, or other product-related questions.

 [Request a Quote](#)

 [Datasheet Search](#)

Tel: +00 852 30501935 

RFQ Email: Info@DiGi-Electronics.com

DiGi is a global authorized distributor of electronic components.

Purchase and inquiry

Manufacturer Product Number:

M22-2530705

Series:

M22

Connector Type:

Header, Cuttable

Pitch - Mating:

0.079" (2.00mm)

Number of Rows:

1

Number of Positions Loaded:

All

Shrouding:

Unshrouded

Termination:

Solder

Contact Length - Mating:

0.138" (3.50mm)

Overall Contact Length:

-

Contact Shape:

Manufacturer:

Harwin Inc.

Product Status:

Active

Contact Type:

Male Pin

Number of Positions:

7

Row Spacing - Mating:

-

Style:

Board to Board

Mounting Type:

Through Hole, Right Angle

Fastening Type:

Push-Pull

Contact Length - Post:

0.094" (2.40mm)

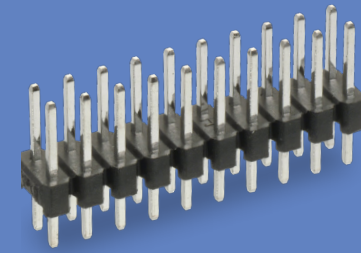
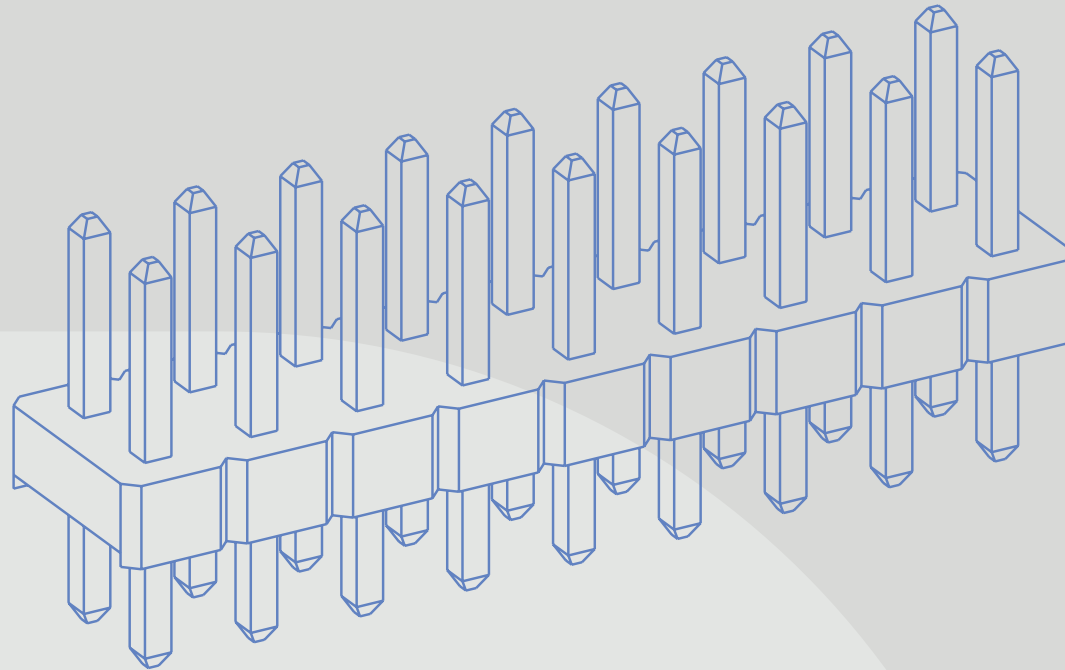
Insulation Height:

0.079" (2.00mm)

Contact Finish - Mating:

HARWIN

CONNECT TECHNOLOGY
WITH CONFIDENCE



DEPENDABLE
CONNECTIVITY
ACROSS THE BOARD

INDESS

PIN HEADER / SOCKET CONNECTORS

2.54MM (.1") AND 2.00MM (.079") PITCH

BBi
RANGE

HARWIN



BBi CONNECTORS FROM HARWIN.

Dependable performance and variety

Reliable all-purpose connectivity with cost-effective simplicity.
Stocked in depth across the global distribution network.
Compatible with industry-standard designs.

The 2.54mm pitch connector has been a cornerstone of modern electronics for over 60 years. The 2.00mm pitch connectors were added shortly afterwards in the drive for miniaturization – same design, but over 20% smaller.

These connectors are the ultimate in basic and functional design. Males consist of square pins held in place by a plastic carrier strip. Female twin-beam connectors are enclosed in a rectangular protective housing.

Throughboard and Gull-wing SMT terminations, vertical and horizontal orientations, single and double row in both ranges. Contact counts from 2 to 100 are available.

Cable contacts are supplied in reeled carrier format, ideal for automated crimping. Loose contacts are also available, with hand crimp tools for low volume production or prototype builds.

FEATURES

- Dependable and reliable, easy to use
- Compatible with industry standard equivalent connectors
- Quality cost-effective connections

APPLICATIONS

- Embedded computing
- Factory automation
- Consumer electronics
- Metering and monitoring



VIEW M20 (2.54MM, .01") [HERE](#)



VIEW M22 (2.00MM, .079") [HERE](#)



SPECIFICATIONS

MATERIALS	ELECTRICAL	MECHANICAL	ENVIRONMENTAL
Housings: Standard or High Temperature Plastic, UL94V-0	Current per contact: 3A max (M20 connectors) 2A max (M22 connectors)	Durability: 300 mating cycles (Gold, Gold + Tin) 50 mating cycles (Tin)	Operating temperature: -25°C to +105°C min (PCB) -25°C to +85°C (cable)
Contacts: Copper Alloy	Maximum voltage: 500V AC min	Insertion force (per contact): 2.0N max (M20 connectors) 2.9N max (M22 connectors) 14.5N max total (Jumper Sockets)	
Contact Finish: Gold, Tin, or selective Gold + Tin	Insulation resistance: 500MΩ min	Withdrawal force (per contact): 0.2N min (Connectors) 1N min total (Jumper Sockets)	Compliance: RoHS Compliant REACH / CMRT statements
		Pitch: 2.54mm / .01" (M20 connectors) 2.00mm / .079" (M22 connectors)	

Specifications are subject to change.



VIEW M20 (2.54MM, .01") [HERE](#)

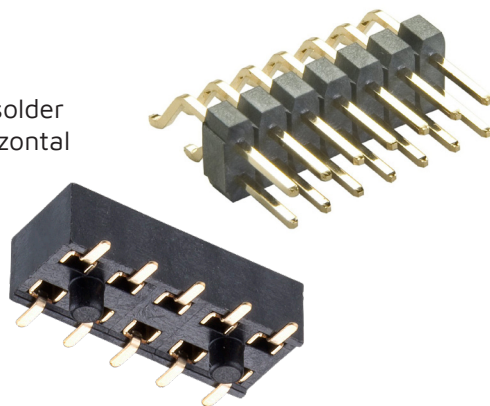
VIEW M22 (2.00MM, .079") [HERE](#)



PRODUCT CATEGORIES

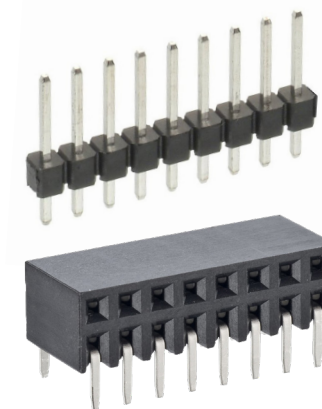
M20 SMT Connectors

Gull-wing terminations for easy solder joint inspection. Vertical and horizontal orientation for male and female connectors. Single and double row designs.



M20 Throughboard Connectors

Use male pin headers with jumper sockets for on-board hardware programming. Vertical and horizontal for male and female connectors. Single and double row designs. Jackscrews are supplied assembled to the housings.



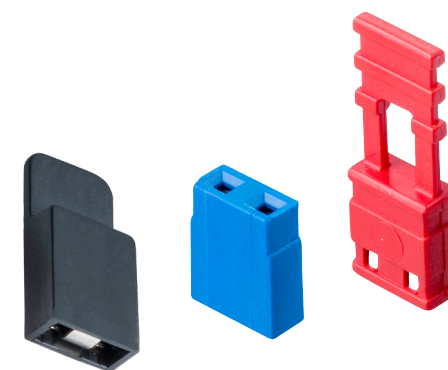
M20 Cable Connectors

Female housings in single and double row, up to 12 contacts per row. Crimp contacts are supplied loose for prototyping (hand crimp tool available) or reeled for automated volume production. No insertion tooling required.



M20 Jumper Sockets

Use with pin headers for on-board hardware programming. Available closed or open-ended, or with handles for added convenience. Choice of colors.



Specifications are subject to change.



VIEW FULL SERIES & SPECIFICATIONS [HERE](#)

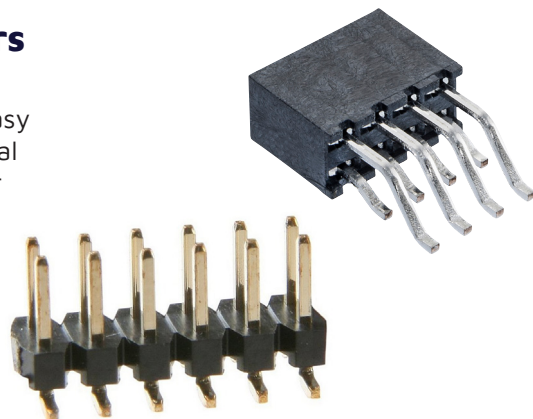




PRODUCT CATEGORIES

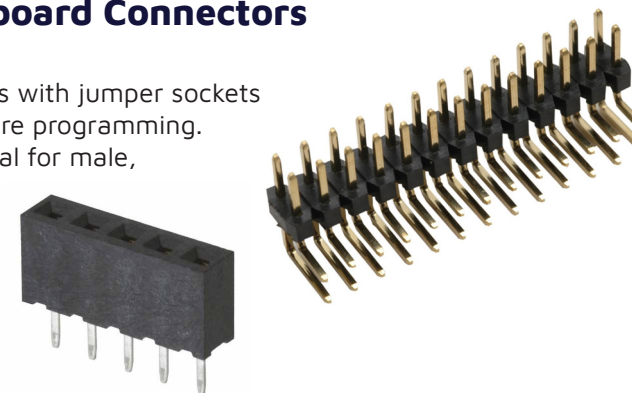
M22 SMT Connectors

Gull-wing terminations for easy solder joint inspection. Vertical and horizontal orientation for male and female connectors. Single and double row designs.



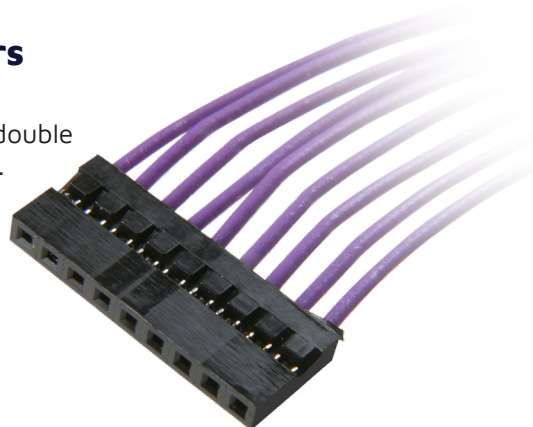
M22 Throughboard Connectors

Use male pin headers with jumper sockets for on-board hardware programming. Vertical and horizontal for male, vertical for female connectors. Single and double row designs.



M22 Cable Connectors

Female housings in single and double row, up to 20 contacts per row. Crimp contacts are supplied loose for prototyping (hand crimp tool available) or reeled for automated volume production. No insertion tooling required.



M22 Jumper Sockets

Use with pin headers for on-board hardware programming. Available open-ended, with a choice of colors.



Specifications are subject to change.



VIEW FULL SERIES & SPECIFICATIONS [HERE](#)





DOWNLOADS

Technical Documents

M20 Component Specification



M20 Jumper Sockets Component Specification



M22 Component Specification



M22 Jumper Sockets Component Specification



Product Training

Product Training Module (PTM)



M20 Hand Crimp Tool Instruction Sheet



M22 Hand Crimp Tool Instruction Sheet




Test Reports

HT063 – M20-782 General
(Electrical, Mechanical and Environmental)



Specifications are subject to change.



 [VIEW M20 \(2.54MM, .01"\) **HERE**](#)

 [VIEW M22 \(2.00MM, .079"\) **HERE**](#)

HARWIN

CONNECT TECHNOLOGY
WITH CONFIDENCE



HIGH RELIABILITY
WITH SUPREME
PERFORMANCE



INNOVATIVE
DESIGNS FOR
EASY ASSEMBLY



DEPENDABLE
CONNECTIVITY
ACROSS THE BOARD

HRI
RANGE

EZI
RANGE

BBI
RANGE

FOR FURTHER INFORMATION PLEASE CONTACT:

Europe, Middle East & Africa

E: technical@harwin.com

Americas

E: technical-us@harwin.com

Asia Pacific

E: technical-asia@harwin.com

// WWW.HARWIN.COM

OUR CERTIFICATE

DiGi provide top-quality products and perfect service for customer worldwide through standardization, technological innovation and continuous improvement. DiGi through third-party certification, we stricly control the quality of products and services. Welcome your RFQ to

Email: Info@DiGi-Electronics.com



Tel: +00 852 30501935

RFQ Email: Info@DiGi-Electronics.com

DiGi is a global authorized distributor of electronic components.