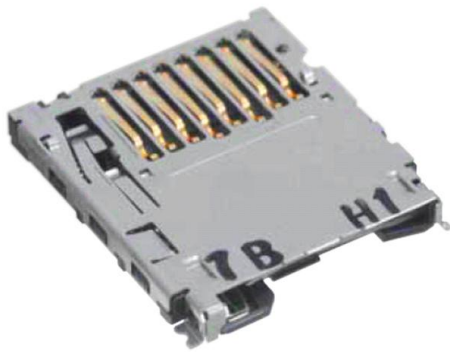


DM3BT-DSF-PEJS Datasheet

www.digi-electronics.com



<https://www.DiGi-Electronics.com>

DiGi Electronics Part Number	DM3BT-DSF-PEJS-DG
Manufacturer	Hirose Electric Co Ltd
Manufacturer Product Number	DM3BT-DSF-PEJS
Description	CONN MICRO SD CARD PUSH-PUSH R/A
Detailed Description	10 (8 + 2) Position Card Connector Secure Digital - microSD™ Surface Mount, Right Angle Gold

This model DM3BT-DSF-PEJS is available at DiGi Electronics.

DiGi Electronics offers a global database of semiconductor and electronic component datasheets.

We welcome your inquiries regarding pricing, lead time, or other product-related questions.

 [Request a Quote](#)

 [Datasheet Search](#)



Tel: +00 852-30501935

RFQ Email: Info@DiGi-Electronics.com

DiGi is a global authorized distributor of electronic components.

Purchase and inquiry

Manufacturer Product Number:

DM3BT-DSF-PEJS

Series:

DM3

Card Type:

Secure Digital - microSD™

Connector Type:

Connector and Ejector

Ejector Side:

-

Features:

Switch

Mounting Feature:

Reverse - Bottom

Contact Finish Thickness:

-

Manufacturer:

Hirose Electric Co Ltd

Product Status:

Active

Number of Positions:

10 (8 + 2)

Insertion, Removal Method:

Push In, Push Out

Mounting Type:

Surface Mount, Right Angle

Height Above Board:

0.072" (1.83mm)

Contact Finish:

Gold

Base Product Number:

DM3BT

Environmental & Export classification

RoHS Status:

ROHS3 Compliant

REACH Status:

REACH Unaffected

HTSUS:

8536.69.4040

Moisture Sensitivity Level (MSL):

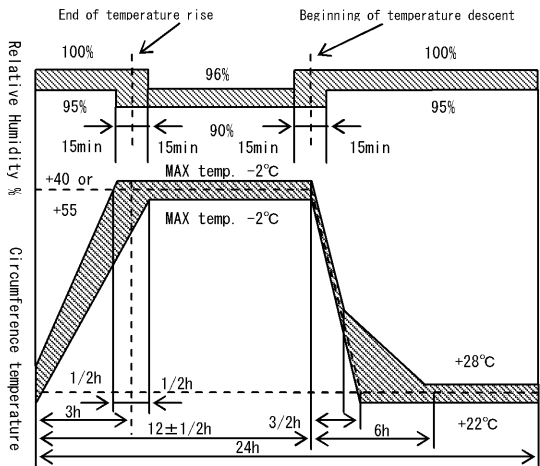


1 (Unlimited)

ECCN:

EAR99

APPLICABLE STANDARD		microSD Memory Card Specifications Ver 1.10			1
RATING	OPERATING TEMPERATURE RANGE	-25 °C TO +85 °C (NOTE1)	STORAGE TEMPERATURE RANGE	-40 °C TO +85 °C	
	VOLTAGE	AC 125V	OPERATING HUMIDITY RANGE	95%MAXIMUM (NON-CONDENSING)	
	CURRENT	0.5A			
SPECIFICATIONS					
ITEM	TEST METHOD		REQUIREMENTS	QT	AT
CONSTRUCTION					
GENERAL EXAMINATION	VISUALLY AND BY MEASURING INSTRUMENT.		ACCORDING TO DRAWING.	X	X
MARKING	CONFIRMED VISUALLY.			X	X
ELECTRIC CHARACTERISTICS					
CONTACT RESISTANCE MILLIVOLT LEVEL METHOD IEC60512-2-2a	OPEN VOLTAGE 20 mV AC MAX, TEST CURRENT 1mA.		INITIALLY 100 mΩ MAXIMUM (NOTE 2).	X	-
VOLTAGE PROOF IEC60512-2-4a	500 Vrms AC IS APPLIED FOR 1 MINUTE.		①NO FLASHOVER OR BREAKDOWN. ②CURRENT LEAKAGE 1mA MAXIMUM.	X	X
INSULATION RESISTANCE IEC60512-2-3a	MEASURE WITHIN 1 MINUTE AFTER APPLYING 500 V DC.		INITIALLY 1000 MΩ MINIMUM.	X	-
MECHANICAL CHARACTERISTICS					
CARD INSERTION FORCE	MEASURED BY APPLICABLE CORD AT 25mm/min.		THE INITIAL STAGE:12 N MAX. AFTER MECHANICAL OPERATION:15N MAX.	X	-
CARD EJECTION FORCE					
MECHANICAL OPERATION [OFFICE ENVIRONMENT] EIA364B class1.1	10,000 TIMES INSERTIONS AND WITH DRAWAL SHALL BE MADE AT THE CYCLE RATE LESS THAN 10 CYCLES PER 1 MINUTE. NOTE:AFTER EACH 10 CYCLES STOP THE INSRETION AND REST THE CONNECTOR FOR 5 TO 10 MINUTES. CARD SURFACE SHALL BE CLEANED BY AIR BLOW: AT EACH 100 CYCLES INTERVAL(10 TIMES) FROM STRAT TO 1,000 CYCLES. AT EACH 1,000 CYCLES INTERVAL (9 TIMES) FROM 1,001CYCLES TO 10,000 CYCLES.		① CONTACT RESISTANCE: AFTER TEST 40 mΩ MAXIMUM CHANGE. (CONTACT RESISTANCE REVERSION BY INSERTION AND EXTRACTION IS AVAILABLE) ② NO MECHANICAL DAMAGE SHALL OCCUR ON THE PARTS.	X	-
VIBRATION AND HIGH FREQUENCY IEC60512-4-6d	FREQUENCY 10 TO 55 TO 10 Hz/min, SINGLE AMPLITUDE 0.75 mm FOR 4 h IN 3 DIRECTIONS, TOTAL 12 h.		① NO ELECTRICAL DISCONTINUITY OF 100 ns. ② NO MECHANICAL DAMAGE SHALL OCCUR ON THE PARTS.	X	-
SHOCK IEC60512-4-6c	ACCELERATION 490m/s ² STANDARD HOLDING TIME 11 ms, SEMI-SINE WAVE FOR 3TIMES IN 3 DIRECTIONS, TOTAL 18 TIMES.			X	-
	COUNT	DESCRIPTION OF REVISIONS	DESIGNED	CHECKED	DATE
	1	DIS-F-005063	KA. KANEKO	NH. SUGITA	10. 09. 27
REMARK			APPROVED	KI. AKIYAMA	08. 09. 03
NOTE1:INCLUDE THE TEMPERATURE RISE BY CURRENT.			CHECKED	SI. TOMIOKA	08. 09. 03
NOTE 2:CONTACT RESISTANCE INCLUDES CONDUCTOR RESISTANCE.UNLESS OTHERWISE SPECIFIED, THE TEST SHOULD BE DONE UNDER TEMP. 15 TO 35°C, AIR PRESSURE 86 TO 106kPa, RELATIVE HUMIDITY 25 TO 85%.			DESIGNED	KJ. NISHIWAKI	08. 09. 02
Note QT:Qualification Test AT:Assurance Test X:Applicable Test			DRAWN	KJ. NISHIWAKI	08. 09. 02
			DRAWING NO.	ELC4-158563-00	
	SPECIFICATION SHEET		PART NO.	DM3BT-DSF-PEJS	
	HIROSE ELECTRIC CO., LTD.		CODE NO.	CL609-0029-9-00	1/2

SPECIFICATIONS

ITEM	TEST METHOD	REQUIREMENTS	QT	AT
ENVIRONMENTAL CHARACTERISTICS				
DAMP HEAT, CYCLIC IEC60512-6-11m	10 CYCLES (1 CYCLE=24 HOURS) WITH CONNECTORS ENGAGED. 	① CONTACT RESISTANCE: AFTER TEST 40 mΩ MAXIMUM CHANGE. ② INSULATION RESISTANCE: AFTER TEST 100 MΩ MINIMUM. ③ NO MECHANICAL DAMAGE OR HEAVY CORROSION SHALL OCCUR ON THE PARTS.	X	—
RAPID CHANGE OF TEMPERATURE IEC60512-6-11d	5 CYCLES (1 CYCLE=1 HOUR) WITH CONNECTORS ENGAGED. TEMPERATURE:-55 TO +85°C		X	—
DRY HEAT IEC60512-6-11i	EXPOSED AT 85 °C FOR 96 HOURS WITH CONNECTORS ENGAGED.		X	—
COLD IEC60512-6-11j	EXPOSED AT -25 °C FOR 96 HOURS WITH CONNECTORS ENGAGED.		X	—
DAMP HEAT, STEADY STATE IEC60512-6-11c	EXPOSED AT 40 °C, 90 TO 95 % RH, 96 HOURS WITH CONNECTORS ENGAGED.		X	—
HYDROGEN SULFIDE JEIDA 38	EXPOSED IN 3 PPM HYDROGEN SULFIDE, APPROX. 40°C, 80% RH, 96 HOURS, WITH CONNECTORS ENGAGED.		X	—
Note QT:Qualification Test AT:Assurance Test X:Applicable Test		DRAWING NO.	ELC4-158563-00	
	SPECIFICATION SHEET		PART NO.	DM3BT-DSF-PEJS
	HIROSE ELECTRIC CO., LTD.		CODE NO	CL609-0029-9-00  2/2

OUR CERTIFICATE

DiGi provide top-quality products and perfect service for customer worldwide through standardization, technological innovation and continuous improvement. DiGi through third-party certification, we stricly control the quality of products and services. Welcome your RFQ to

Email: Info@DiGi-Electronics.com



Tel: +00 852-30501935

RFQ Email: Info@DiGi-Electronics.com

DiGi is a global authorized distributor of electronic components.