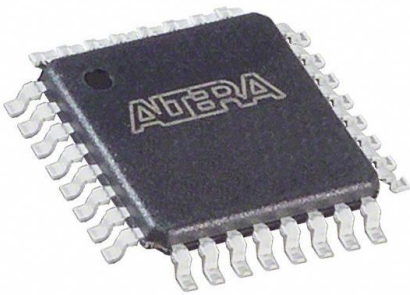


# EPC1441TC32N Datasheet

[www.digi-electronics.com](http://www.digi-electronics.com)



EPC1441TC32N

<https://www.DiGi-Electronics.com>

DiGi Electronics Part Number	EPC1441TC32N-DG
Manufacturer	<a href="#">Intel</a>
Manufacturer Product Number	EPC1441TC32N
Description	IC CONFIG DEVICE 440KBIT 32TQFP
Detailed Description	Memory, Integrated Circuits (ICs)



Tel: +00 852-30501935

RFQ Email: [Info@DiGi-Electronics.com](mailto:Info@DiGi-Electronics.com)

DiGi is a global authorized distributor of electronic components.

## Purchase and inquiry

Manufacturer Product Number:

EPC1441TC32N

Series:

EPC

DiGi-Electronics Programmable:

Verified

Memory Size:

440kb

Operating Temperature:

0°C ~ 70°C

Package / Case:

32-TQFP

Base Product Number:

EPC1441

Manufacturer:

Intel

Product Status:

Obsolete

Programmable Type:

OTP

Voltage - Supply:

3V ~ 3.6V, 4.75V ~ 5.25V

Mounting Type:

Surface Mount

Supplier Device Package:

32-TQFP (7x7)

## Environmental & Export classification

Moisture Sensitivity Level (MSL):

3 (168 Hours)

ECCN:

3A001A7A

REACH Status:

REACH Unaffected

HTSUS:

8542.32.0071



# Intel<sup>®</sup> FPGA Software Installation and Licensing

Updated for Intel<sup>®</sup> Quartus<sup>®</sup> Prime Design Suite: **21.3**



**Online Version**



**Send Feedback**

**MNL-1065**

ID: **683472**

Version: **2021.10.04**



## Contents

---

<b>1. Introduction to Intel® FPGA Software Installation and Licensing.....</b>	<b>4</b>
1.1. Intel FPGA Download Center.....	4
1.2. Intel FPGA Self-Service Licensing Center.....	4
<b>2. System Requirements and Prerequisites.....</b>	<b>5</b>
2.1. Minimum Hardware Requirements.....	5
2.2. Cable and Port Requirements.....	5
2.3. Software Requirements.....	6
2.3.1. Installing Windows Subsystem for Linux* (WSL) on Windows.....	7
2.3.2. Intel High Level Synthesis Compiler Software Requirements.....	7
2.3.3. Questa*-Intel FPGA Edition Software Requirements.....	8
2.4. Interaction with Third-party Software.....	8
<b>3. Downloading and Installing Intel FPGA Software.....</b>	<b>9</b>
3.1. Software Available in the Download Center.....	9
3.2. Installation Path.....	10
3.3. Downloading and Installing with Individual Executable Files.....	10
3.3.1. Downloading Individual Executable Files.....	10
3.3.2. Installing Intel FPGA Software at the Command Prompt.....	11
3.4. Downloading and Installing Using .tar Files.....	13
3.4.1. Downloading .tar Files.....	13
3.4.2. Installing from .tar Files.....	13
3.4.3. Using the Same Installation Files on Multiple Systems.....	14
3.5. Intel Quartus Prime Environment Variables.....	14
3.6. Starting the Intel Quartus Prime Software.....	15
3.7. Installing Programming Cable Drivers.....	16
3.7.1. Installing Drivers on Red Hat Enterprise Linux Systems.....	17
3.8. Installing and Configuring a JTAG Server.....	17
3.8.1. Installing and Configuring jtagserver on Windows.....	17
3.8.2. Installing and Configuring a Local JTAG Server (jtagd) on Linux.....	18
3.9. Adding Device Support and Other Intel FPGA Software to Existing Installation.....	18
3.10. Managing Multiple Versions and Copies of Intel FPGA Software.....	19
3.11. Updating Intel FPGA Software.....	19
3.12. Uninstalling Intel FPGA Software.....	20
3.12.1. Uninstalling on Windows.....	20
3.12.2. Uninstalling on Linux.....	20
<b>4. Licensing Intel FPGA Software.....</b>	<b>21</b>
4.1. Checking the IP License Status.....	21
4.2. Evaluating the Intel Quartus Prime Software.....	22
4.3. Licensing Intel FPGA Software Walkthrough.....	23
4.3.1. Obtain Necessary Hardware Information.....	23
4.3.2. Request a License File from the Self-service Licensing Center.....	24
4.3.3. Set Up a Fixed License.....	24
4.3.4. Set Up a License in a Network License Server.....	25
4.4. Types of Intel FPGA Software Licenses.....	28
4.4.1. Intel Quartus Prime Software License.....	28
4.4.2. Questa*-Intel FPGA Edition Software License.....	29



4.4.3. Intel Quartus Prime Lite Edition and Questa*-Intel FPGA Starter Edition Software License.....	29
4.4.4. Intellectual Property (IP) Cores Licenses.....	29
4.4.5. Development Kits Containing the Intel Quartus Prime Software.....	30
4.4.6. Nios II Embedded Design Suite License.....	30
4.4.7. Siemens EDA AXI Verification IP Suite License (Intel FPGA Edition).....	31
4.4.8. University Program Software Licenses.....	31
4.5. Configuring the License Manager Server.....	31
4.5.1. Installing the FLEXlm License Manager Server Software on Another License Server.....	31
4.5.2. Upgrading the FLEXlm License Manager Server Software.....	32
4.5.3. (Windows Only) Starting and Stopping the License Server.....	33
4.5.4. (Windows Only) Starting the License Server Automatically.....	33
4.5.5. Rereading an Existing License File on a License Server.....	34
4.6. Other Licensing Actions.....	34
4.6.1. Managing Licensed Users.....	35
4.6.2. Renewing a License.....	35
4.6.3. Creating a Computer Profile.....	35
4.6.4. Transferring a License File to Another Computer.....	36
4.6.5. Adding Floating Seats.....	36
4.6.6. Specifying the License for the Questa*-Intel FPGA Edition Software.....	37
4.7. Syntax of license.dat License File.....	38
<b>5. About Intel FPGA Software License Files.....</b>	<b>39</b>
5.1. License File Troubleshooting.....	39
5.2. License File Components.....	39
5.2.1. License File Header.....	39
5.2.2. SERVER, VENDOR, and USE_SERVER Lines.....	40
5.2.3. FEATURE and INCREMENT Lines.....	40
5.3. Using a FLEXlm Options File.....	42
5.4. License.dat Example Files.....	43
5.4.1. Fixed PC Software Guard License Example.....	43
5.4.2. Floating Network License Example.....	44
<b>A. Getting Hardware Information for License.....</b>	<b>45</b>
A.1. Identifying Host's NIC ID.....	45
A.1.1. Finding the NIC ID for Windows.....	45
A.1.2. Finding the NIC ID on Linux .....	46
A.1.3. Finding the NIC ID in the Intel Quartus Prime Software.....	46
A.1.4. Find NIC ID on Windows Using FLEXlm Utilities.....	47
A.2. UNIX Host ID.....	47
A.3. Locating Your Hard-Disk Serial Number.....	47
A.3.1. To find the hard-disk serial number on a Windows PC.....	48
A.3.2. To find the hard-disk serial number if the Intel Quartus Prime software is installed on your computer.....	48
A.4. Identifying the USB Software Guard ID.....	48
<b>B. Intel FPGA Software Installation and Licensing Archives.....</b>	<b>49</b>
<b>C. Document Revision History for Intel FPGA Software Installation and Licensing.....</b>	<b>50</b>



# 1. Introduction to Intel® FPGA Software Installation and Licensing

---

This manual provides comprehensive information for installing and licensing Intel® FPGA software, including Intel Quartus® Prime software, Questa\*-Intel FPGA Edition software, Nios® II Embedded Design Suite, and related software on Windows\* and Linux operating systems.

**Note:** If you are a single user of Intel Quartus Prime software for Windows or Linux, use the *Intel FPGA Software Installation and Licensing Quick Start* to get your software up and running quickly. For more complex licensing scenarios, refer to the chapters on downloading, installing, and licensing software.

## Related Information

[Intel FPGA Software Installation and Licensing Quick Start](#)

## 1.1. Intel FPGA Download Center

The Intel FPGA Download Center in the Intel webpage contains the resources to download Intel FPGA software and IP cores.

### Related Information

- [Downloading and Installing Intel FPGA Software](#) on page 9
- [Download Center](#)

## 1.2. Intel FPGA Self-Service Licensing Center

The Intel FPGA Self-Service Licensing Center in the Intel webpage provides support for licensing Intel FPGA software.

### Related Information

- [Licensing Intel FPGA Software](#) on page 21
- [Self-Service Licensing Center](#)



## 2. System Requirements and Prerequisites

---

To install and run Intel FPGA software, your system must meet minimum requirements.

### 2.1. Minimum Hardware Requirements

Before installing the Intel Quartus Prime software, ensure your hardware conforms to these requirements.

The Intel Quartus Prime software requires:

- A Windows PC or Linux workstation.
  - For the most up-to-date FPGA software operating system requirements, refer to the Operating System Support page of [www.intel.com](http://www.intel.com).
- A minimum CPU of 64-bit Intel Nehalem (2008) or an AMD Bulldozer (2011) microarchitecture processor with SSE4.2 instruction set or later.
- A monitor capable of at least 1024 x 768 display resolution.
- At least 36 GB of free disk space to contain copies of uncompressed version installation files. For disk space requirements for individual software components or Intel FPGA IP cores, refer to the Requirements page on the website, and click the **Memory Recommendations** tab.
  - Important:* — The disk space may be significantly more based on the device families included in the install.
    - Prior to installation, the disk space should be enough to hold both zipped tar files and uncompressed installation files.
    - After successful installation, delete the downloaded zipped files to release the disk space.

#### Related Information

- [System and Software Requirements](#)
- [Operating System Support](#)

### 2.2. Cable and Port Requirements

Using an Intel FPGA download cable or programming unit to program devices with the Intel Quartus Prime software requires the following minimum hardware:



- USB port for connecting an Intel FPGA Download Cable (Formerly USB Blaster) or Intel FPGA Download Cable II (Formerly USB Blaster II).

For information about the Intel FPGA Download Cable II, refer to the *Intel FPGA Download Cable II (formerly USB Blaster II) User Guide*.

- 10/100 Mb Ethernet connection for connecting an Intel FPGA Ethernet Cable download cable (formerly EthernetBlaster II Download Cable).

For more information, refer to the *EthernetBlaster II Communications Cable User Guide*.

### Related Information

[Installing Programming Cable Drivers](#) on page 16

## 2.3. Software Requirements

Installing Intel FPGA software requires the following minimum third-party software:

- One of the following browsers with an Internet connection for Intel Quartus Prime software Internet resources:
  - Mozilla Firefox version 3.6 or later
  - Microsoft Internet Explorer version 8.0 or later
  - Microsoft Edge
  - Google Chrome
- Other requirements depend on your OS:

**Table 1. Prerequisites for all Intel FPGA Software**

OS	Prerequisite
Any Linux OS distribution	<p><b>KDE</b> or <b>GNOME</b> window manager (version included with your Linux distribution)</p> <p>Native XServer software</p>
Red Hat Enterprise Linux 7 and 8	<p>Install the following RPM packages:</p> <ul style="list-style-type: none"> <li>• X Windows libraries: <code>make</code>, <code>libX11.i686</code>, <code>libXau.i686</code>, <code>libXdmcp.i686</code>, <code>libXext.i686</code>, <code>libXft-devel.i686</code>, <code>libXft.i686</code>, <code>libXrender.i686</code>, <code>libXt.i686</code>, and <code>libXtst.i686</code></li> <li>• GIMP toolkit: <code>GTK+2</code></li> </ul>
SUSE 12 Enterprise operating system	<p>Install the 64-bit <code>libpng12.so.0</code> library.</p> <p>Obtain equivalent or substitute packages listed for Red Hat Enterprise Linux or above.</p>
Ubuntu Enterprise Linux	<p>Install <code>libc6:i386</code>, <code>libncurses6:i386</code>, <code>libxtst6:i386</code>, <code>libxft2:i386</code>, <code>libstdc++6:i386</code>, <code>libc6-dev-i386</code>, <code>lib32z1</code>, <code>lib32ncurses5</code>, <code>libbz2-1.0:i386</code>, and <code>libpng12</code> libraries (see note below).</p> <p><i>Note:</i></p> <ul style="list-style-type: none"> <li>• For Ubuntu 18.04, additionally install <code>libqt5xml5</code> and <code>liblzma-dev</code> libraries.</li> <li>• For Ubuntu 18, <code>libpng12</code> library is no longer available. Install it using the following commands:</li> </ul> <pre>sudo add-apt-repository ppa:linuxuprising/libpng12 sudo apt update sudo apt install libpng12-0</pre>
Windows	<ul style="list-style-type: none"> <li>• Install the Microsoft Visual C++ 2015 Redistributable Package (x64).</li> </ul> <p><i>Note:</i> If you have administrator privileges, the installation of Intel Quartus Prime software installs this package automatically.</p> <ul style="list-style-type: none"> <li>• Install any of the unzipping tools, such as WinZip*, 7-Zip*, or WinRAR*, to extract the tar files if you download combined-files packages.</li> </ul>

## 2. System Requirements and Prerequisites

683472 | 2021.10.04



### 2.3.1. Installing Windows Subsystem for Linux\* (WSL) on Windows

Starting with Nios II EDS in Intel Quartus Prime Pro Edition version 19.2 and Intel Quartus Prime Standard Edition version 19.1, the Cygwin component in the Windows version of Nios II EDS has been removed and replaced with Windows Subsystem for Linux\* (WSL).

The procedure for installing WSL:

1. Go to <https://docs.microsoft.com/en-us/windows/wsl/install-win10> and follow Microsoft\*'s instructions to install Ubuntu 18.04 LTS for WSL.

- Note:*
- Windows 10 build version 16215.0 or higher is the recommended operating system version.
  - Install only WSL 1 and skip the instructions for updating WSL 1 to WSL 2. WSL 2 is not supported.
  - From the Intel Quartus Prime Pro Edition 20.4 and Intel Quartus Prime Standard Edition 20.1.1, the minimum requirement is Windows 10 Version 1903 build 18362.1256.

*Remember:* In **Windows Features**, ensure to turn on the **Windows Subsystem for Linux** option.

2. After installation has successfully completed, launch Ubuntu 18.04.
3. Install additional `distro` packages required for Nios II EDS using the following commands:

```
sudo apt update
```

```
sudo apt install wsl
```

```
sudo apt install dos2unix
```

```
sudo apt install make
```

```
sudo apt install build-essential
```

*Note:* Ensure that all package dependencies, repositories lists, and Internet connection for WSL are set correctly.

- Note:*
- For the Nios II Command Shell, use all command line tools, as before, but you need to add `.exe` to launch a Windows executable, like `eclipse-nios2.exe` or `jtagconfig.exe`.
  - Nios II BSP and application projects from previous Intel Quartus Prime Pro Edition releases are not compatible with this WSL solution. You are required to regenerate your projects.

### 2.3.2. Intel High Level Synthesis Compiler Software Requirements

The Intel HLS Compiler Pro Edition is part of the Intel Quartus Prime Pro Edition Design Suite. You can install the Intel HLS Compiler as part of your Intel Quartus Prime software installation or install it separately. It requires Intel Quartus Prime and additional software to use.



The Intel HLS Compiler requires the C++ Compiler and Siemens EDA\* Questa\* Software in addition to Intel Quartus Prime:

### C++ Compiler

On Linux, Intel HLS Compiler requires GCC 9.3.0 including the GNU C++ library and binary utilities (binutils).

This version of GCC is provided as part of your Intel HLS Compiler installation. After installing the Intel HLS Compiler, GCC 9.3.0 is available in `<installdir>/gcc`.

**Important:** The Intel HLS Compiler uses the `<installdir>/gcc` directory as its toolchain directory. Use this installation of GCC for all your HLS-related design work.

For Windows, install one of the following versions of Microsoft Visual Studio\* Professional:

- Microsoft Visual Studio 2017 Professional
- Microsoft Visual Studio 2017 Community

**Important:** The Intel HLS Compiler software does not support versions of Microsoft Visual Studio other than those specified for the edition of the software.

For Questa\*-Intel FPGA Edition software requirements, refer to [Questa\\*-Intel FPGA Edition Software Requirements](#) on page 8

### Related Information

- [Intel HLS Compiler Prerequisites](#)  
In *Intel High Level Synthesis (HLS) Compiler Getting Started Guide*
- [Operating System Support](#)

## 2.3.3. Questa\*-Intel FPGA Edition Software Requirements

The prerequisites to install Questa\*-Intel FPGA Edition depend on your OS:

**Table 2. Questa\*-Intel FPGA Edition Software Requirements**

OS	Requisite
Windows	Install the Microsoft Visual C++ Redistributable for Microsoft Visual Studio 2017. <i>Note:</i> If you have administrator privileges, the installation of Questa*-Intel FPGA Edition installs this package automatically.

## 2.4. Interaction with Third-party Software

If you are running the Bitdefender antivirus software, ensure to temporarily disable the software when downloading and installing the Intel Quartus Prime software.



## 3. Downloading and Installing Intel FPGA Software

---

**Note:** Before you download and install the software, ensure that your system complies with all requirements described in *System Requirements & Prerequisites*.

You download software from the Download Center on [www.intel.com](http://www.intel.com). You have several options for downloading software. Choose depending on download speed, design requirements, and method of installation.

- To download select elements of the software, additional software, or additional device support, use individual files.
- To download the complete software package and device support for all supported families, use `.tar` files.

### 3.1. Software Available in the Download Center

- Intel Quartus Prime Pro, Standard, and Lite Edition software<sup>(1)</sup> (includes the Nios II EDS plug-in and IP Library)
  - Note:* — Starting with Nios II EDS in the Intel Quartus Prime Pro Edition version 19.2 and Intel Quartus Prime Standard Edition version 19.1, the Cygwin component in the Windows version of Nios II EDS has been removed and replaced with WSL.
  - Starting with Nios II EDS version 19.1, the Nios II EDS requires the Eclipse IDE component to be manually installed.
- Intel Quartus Prime Help
- Questa\*-Intel FPGA Edition software
- DSP Builder for Intel FPGAs
- FLEXlm license server software
- Advanced Link Analyzer
- Stand-alone Intel Quartus Prime Programmer and Tools<sup>(1)</sup>
- Intel FPGA SDK for OpenCL™<sup>(2)(3)</sup>
- Intel High Level Synthesis Compiler
- Intel FPGA Power and Thermal Calculator

---

<sup>(1)</sup> This product includes software derived from the RSA Data Security, Inc. Secure Hash Algorithm-1 (SHA-1).

<sup>(2)</sup> The Intel FPGA SDK for OpenCL is based on a published Khronos Specification, and has passed the Khronos Conformance Testing Process. Current conformance status can be found at [www.khronos.org/conformance](http://www.khronos.org/conformance).



You must install device support for Agilex™, Intel eASIC™ N5X, Stratix®, Arria®, Cyclone®, or MAX® device families as part of the Intel Quartus Prime installation.

**Note:** You can also obtain older versions of software and legacy software from the Download Center. However, 13.0 and older releases are discontinued. For more information about this software discontinuation, refer to [Custom Advisory ADV2011](#) document.

#### Related Information

- [System Requirements and Prerequisites](#) on page 5
- [Download Center for FPGAs](#)
- [Operating System Support](#)
- [Installing Windows Subsystem for Linux \(WSL\) on Windows](#)
- [Installing Eclipse IDE into Nios II EDS](#)

## 3.2. Installation Path

The installation path must satisfy the following requirements:

- Contain only alphanumeric characters
- No special characters or symbols, such as !\$%@^&\*<> ,
- Only English characters
- No spaces

#### Default Installation Path

Linux	<code>&lt;home directory&gt;/&lt;edition&gt;/&lt;version number&gt;</code>	<code>&lt;home directory&gt;</code> is the default path of the Linux workstation, or as set by the system administrator
Windows	<code>&lt;drive&gt;:\&lt;edition&gt;\&lt;version number&gt;</code>	

where `<edition>`:

- `intelFPGA_lite`—for Lite Edition
- `intelFPGA`—for Standard Edition
- `intelFPGA_pro`—for Pro Edition

If you use a different path, substitute the appropriate name for `<installation-directory>` in the installation steps.

## 3.3. Downloading and Installing with Individual Executable Files

### 3.3.1. Downloading Individual Executable Files

To download Intel FPGA software with individual executable files:

1. Visit the Download Center page at:

---

<sup>(3)</sup> OpenCL and the OpenCL logo are trademarks of Apple Inc. used by permission of the Khronos Group™.

### 3. Downloading and Installing Intel FPGA Software

683472 | 2021.10.04



<https://www.intel.com/content/www/us/en/programmable/downloads/download-center.html>

2. Select the software edition (Pro, Standard or Lite).
3. Select the OS.
4. Click the **Individual Files** tab.
5. Download by clicking the **Download** button next to each file name.

The name of the executable file is:

- QuartusLiteSetup-<version> (Lite Edition)
- QuartusSetup-<version> (Standard Edition)
- QuartusProSetup-<version> (Pro Edition)

You can double-click the file to start installation, or you can install through the command line. The latter option allows you to script the installation process.

#### Related Information

[Installation Path](#) on page 10

### 3.3.2. Installing Intel FPGA Software at the Command Prompt

You can install Intel FPGA software for Windows or Linux using command-line arguments. You can also group installation instructions into a custom installation script.

- To run the installer executable, use:
  - Linux:

```
<product>-<version>.run
```

- Windows:

```
<product>-<version>.exe
```

The installation wizard appears to guide you through the installation process.

*Note:* The Intel Quartus Prime software installer is the main installer. It installs other software, such as DSP Builder, if that installer exists in the same location. If a standalone product is not installed by the Intel Quartus Prime software installer, then you must install it separately.

#### Example 1. Command-Line Installer Examples

To see the installer's Help in Linux:

```
<product>-<version>.run --help
```

To run the installation with minimal or no interaction with the installer:

```
<product>-<version>.exe --mode unattended
--unattendedmodeui minimal
--installdir <installation directory>
--accept_eula 1
```



To install in console mode (no X display) for Linux:

```
<product>-<version>.run --mode text
                        --installdir <installation directory>
```

### 3.3.2.1. Command-Line Options

The available command-line arguments for the installer are:

Option	Description
--help	Displays the installer help.
--version	Displays product information.
--unattendedmodeui <unattendedmodeui>	Specifies whether the installation requires user interaction. This argument is useful with unattended mode. Options are: <ul style="list-style-type: none"> <li>none—(Default) Installation does not require user interaction, and no output appears.</li> <li>minimal—Installation does not require user interaction. A pop-up box shows the installation progress.</li> <li>minimalWithDialogs—In addition to the installation progress bar, other pop-ups appear. This mode may require user interaction.</li> </ul> <p><i>Note:</i> If you install in unattended mode, you must also include the --accept_eula 1 option.</p>
--mode <mode>	Specifies the installation mode. For Linux, the available modes are: <ul style="list-style-type: none"> <li>qt (Default)</li> <li>gtk</li> <li>xwindow</li> <li>text</li> <li>unattended</li> </ul> For Windows, the available modes are: <ul style="list-style-type: none"> <li>qt (Default)</li> <li>win32</li> <li>unattended</li> </ul>
--accept_eula 1	States that you accept the Intel FPGA End User License Agreement. This option is mandatory when you use unattended mode. <i>Note:</i> To view the license agreement files prior to installation, run the installer with the --install-lic command-line option.
--disable-components <disable-components>	Specifies which components you want to disable, in a comma-separated list.
--installdir <installdir>	Specifies the target installation directory for Intel FPGA software. Refer to <i>Download and Installation Prerequisites</i> for the default installation directories.
--product_copy_name <product_copy_name>	If you install multiple copies of the same software with the same version on Windows, it specifies the installation name. Default=none.
--install-lic <install_lic>	Specifies the target directory for the license agreement files.

#### Related Information

[Installation Path](#) on page 10

### 3. Downloading and Installing Intel FPGA Software

683472 | 2021.10.04



## 3.4. Downloading and Installing Using .tar Files

### 3.4.1. Downloading .tar Files

To download Intel FPGA software with .tar files:

1. Visit the Download Center page at:  
<https://www.intel.com/content/www/us/en/programmable/downloads/download-center.html>
2. Select the software edition (Pro, Standard or Lite).
3. Select the OS.
4. Click the **Combined Files** tab.
5. Choose which files to download:
  - Single, complete .tar file.
  - Intel Quartus Prime Standard or Pro Edition .tar file, and one or more device-specific .tar files.
  - Intel Quartus Prime Lite Edition, which includes device files.

To verify the software and device support included in each file, view the file contents by moving the pointer over the information icon.

6. Download by clicking the **Download** button next to each file name.

*Important:* Wait for all the files to download completely before beginning installation.

#### Related Information

[Installation Path](#) on page 10

### 3.4.2. Installing from .tar Files

To install Intel FPGA software with .tar files:

1. Extract the installation files into the same directory.  
The **components** subdirectory stores software and device installation files.
2. If you use Windows OS, you extract the installation files by unzipping the .tar files.  
WinZip\*, 7-Zip\*, and WinRAR\* are examples of unzipping tools. Do not use unzip program shortcuts, such as **1-Click Unzip**
3. Run one of the following scripts to begin installation:

**Table 3. Installation Scripts**

Intel Quartus Prime Edition	OS	
	Linux	Windows
Lite and Standard Editions	setup.sh	setup.bat
Pro Edition	setup_pro.sh	setup_pro.bat

The wizard appears, and guides you through the installation process.



### 3.4.3. Using the Same Installation Files on Multiple Systems

You can install Intel FPGA software on multiple systems using the same installation files that you download once. This method reduces overall download and installation time.

To use the same installation files for multiple systems:

- Download and save the installation files to a location that is accessible by each system on which you want to install Intel FPGA software.
- To perform the installation, you can:
  - Launch the installation wizard from each system.
  - Write and run a custom installation script using the available command-line arguments.

## 3.5. Intel Quartus Prime Environment Variables

The Intel Quartus Prime software installation process initializes environment variables. In specific cases, you can take advantage of modifying these variables.

### QUARTUS\_ROOTDIR\_OVERRIDE

Use this optional environment variable when you have multiple copies of the Intel Quartus Prime software on the same computer and you want to determine which version to open by default.

*Note:*

If you have multiple copies of the same version of the Intel Quartus Prime software, the system displays an error message indicating that Intel Quartus Prime software files cannot be found when you start the program. The solution is setting `QUARTUS_ROOTDIR_OVERRIDE` to one of the copies.

### QUARTUS\_LIBRARY\_PATHS

The `QUARTUS_LIBRARY_PATHS` environment variable specifies user-defined library paths.

You can use this environment variable to define multiple library paths at the same time, instead of individually adding each path to the user library.

### PATH

You must add `$QSYS_ROOTDIR` to the `PATH` variable. The `$QSYS_ROOTDIR` locates the directory at `${installdir}/qsys/bin`.

In general, Intel recommends adding all `/bin` to the `PATH` variable to allow running a software without adding the full path.

### LM\_LICENSE\_FILE

The `LM_LICENSE_FILE` environment variable specifies the location of the license file. However, the Intel Quartus Prime software overrides the value of the environment variable with the location that you specify in the **License Setup** dialog box.

*Note:*

Separate multiple license servers and node locking license files with ":" (Linux) or ";" (Windows).

### 3. Downloading and Installing Intel FPGA Software

683472 | 2021.10.04

#### LC\_ALL

You must ensure that your operating system locale is set up correctly. In particular, the locale you specify in `LC_ALL` environment variable must match the locale settings (such as `LANG`). If there is a mismatch, the following Perl warning might be generated during IP generation:

```
perl: warning: Setting locale failed.
```

This warning results in IP generation failure.

**Note:** You can also set the environment variable `PERL_BADLANG=0` to avoid the Perl warning.

#### Sample Setup Script

Instead of setting up the above listed environment variables individually, you can also create a script to set up the environment for a particular version in Linux as shown in the following sample:

```
Sample setup script for Quartus:
quartus_x.x.bash (executable)
#Setup pointers to version X.X
export QUARTUS_ROOTDIR=<quartus-install-path>/quartus"
export QSYS_ROOTDIR=$QUARTUS_ROOTDIR/qsys/bin"
export ALTERAOCLSDKROOT=<some_specific_release>
export INTELFGAOCLSDKROOT=<some_specific_release>"
export PATH="$QUARTUS_ROOTDIR/bin:$QSYS_ROOTDIR:__$S^__PATH"
# Adding any /bin under __^S^__ALTERAOCLSDKROOT or __^S^__INTELFGAOCLSDKROOT
to __^S^__PATH if applicable
export LM_LICENSE_FILE=<path_to_license_file>
```

#### Related Information

[Installation Path](#) on page 10

## 3.6. Starting the Intel Quartus Prime Software

You can run the Intel Quartus Prime software on Windows and Linux.

For versions that you purchase, the Intel Quartus Prime software prompts you for license information if it does not detect a license upon startup. You are prompted to evaluate, buy, or retrieve a license. The Intel Quartus Prime Pro Edition software provides the additional option of running the software in free mode for Intel Cyclone 10 GX devices only.

**Note:** You can evaluate the Intel Quartus Prime software at no cost for a period of time.



### Starting the Intel FPGA Software on Windows

Use any of the following methods to start Intel FPGA software on Windows:

- On the desktop, double-click the Intel FPGA software icon.
- On the Windows\* Start menu, click **Intel FPGA <version number> <Lite/Standard/Pro> Edition ► Quartus**.
- At a command prompt, type:

```
<installation-directory>\bin64\quartus
```

### Starting the Intel FPGA Software on Linux

Use the following method to start Intel FPGA software on Linux:

- Type the following at the command prompt:

```
<installation-directory>/quartus/bin/quartus
```

**Note:**

Starting the Intel Quartus Prime software in a platform-specific directory on Linux (for example, `<installation-directory>/linux64/quartus/`), can cause problems running the software.

### Related Information

[Evaluating the Intel Quartus Prime Software](#) on page 22

## 3.7. Installing Programming Cable Drivers

After installing the Intel Quartus Prime software, you must also install the provided programming cable driver for any Intel FPGA download cable or programming unit that you plan to use.

Locate the appropriate drivers in the following location and install the driver according to your operating system:

- Windows:

```
<installation-directory>\quartus\drivers
```

- Linux:

```
<installation-directory>/quartus/drivers
```

For detailed information on installing drivers and setting up cables, refer to the corresponding cable user guide.

### Related Information

- [Installing the USB Download Cable](#)  
In *Intel FPGA Download Cable (formerly USB Blaster) User Guide*
- [Setting Up the Intel FPGA Download Cable II](#)  
In *Intel FPGA Download Cable II (formerly USB Blaster II) User Guide*
- [EthernetBlaster II Communications Cable User Guide \(PDF\)](#)
- [Cable and Adapter Drivers Information](#)

### 3. Downloading and Installing Intel FPGA Software

683472 | 2021.10.04



## 3.7.1. Installing Drivers on Red Hat Enterprise Linux Systems

To allow communication between the host computer and a development board, you must install the drivers for USB download cables, even for development kits with embedded Intel FPGA Download Cable II circuits. Configuring these options require administrator (root) privileges.

**Note:** The USB-Blaster is now the Intel FPGA Download Cable. The USB-Blaster II is now the Intel FPGA Download Cable II.

The Intel Quartus Prime software accesses the Intel FPGA Download Cable or Intel FPGA Download Cable II through the USB file system (`usbfs`). To program devices, change the permissions on the ports.

### 3.7.1.1. Installing on Red Hat Enterprise Linux 7 or Above

Intel Quartus Prime 16.0 and earlier do not support Red Hat Enterprise Linux (RHE7) 7.

1. Create a file named `/etc/udev/rules.d/51-usbblaster.rules`
2. In the file, write the following lines, depending on the type of download cable:
  - Intel FPGA Download Cable

```
SUBSYSTEMS=="usb", ATTRS{idVendor}=="09fb", ATTRS{idProduct}=="6001",
MODE="0666"
SUBSYSTEMS=="usb", ATTRS{idVendor}=="09fb", ATTRS{idProduct}=="6002",
MODE="0666"
SUBSYSTEMS=="usb", ATTRS{idVendor}=="09fb", ATTRS{idProduct}=="6003",
MODE="0666"
```

- Intel FPGA Download Cable II:

```
SUBSYSTEMS=="usb", ATTRS{idVendor}=="09fb", ATTRS{idProduct}=="6010",
MODE="0666"
SUBSYSTEMS=="usb", ATTRS{idVendor}=="09fb", ATTRS{idProduct}=="6810",
MODE="0666"
```

Now you can set up the programming hardware in the Intel Quartus Prime software.

## 3.8. Installing and Configuring a JTAG Server

A JTAG Server communicates with the hardware and allows multiple programs to use JTAG resources at the same time. `jtagd` is the Linux version of `jtagserver`.

### Related Information

[JTAG Settings tab](#)

In *Intel Quartus Prime Help*

### 3.8.1. Installing and Configuring jtagserver on Windows

If you install the Intel Quartus Prime software for Windows on a network drive, and have a JTAG Server, then you must set up the Intel Quartus Prime software to allow the JTAG Server to run JTAG services.



Intel recommends enabling the **Install JTAG Server as a Windows service and run automatically when Windows starts** option on the final page of the installation wizard to automatically install and run the `jtagserver` as a service upon system start up.

**Note:** For additional information about operating JTAG Server in a more secure manner, refer to the application note [AN 939: JTAG Connections Over SSH](#).

If you do not have the Administrator privilege during installation, or if you choose not to install the JTAG Server as a Windows service automatically, then when necessary, you can install the JTAG Server manually using the command line option, `jtagserver.exe --install` as an Administrator. The `jtagserver.exe` is available within your Intel Quartus Prime software installation directory (`<path>/quartus/bin64`). The installed service does not run as an Administrator.

**Tip:**

- After the installation, you can either use the **Task Manager > Services** tab or the command-line option `--status` to verify if the `jtagserver` service is running.
- You can control the `jtagserver` service using the `--start` and `--stop` command-line options or using the Task Manager.

If there is no active JTAG Server process running, client applications such as Programmer automatically launches an instance of the non-persistent JTAG Server (without it running as a service) and exists after two minutes of idleness.

### 3.8.2. Installing and Configuring a Local JTAG Server (jtagd) on Linux

`jtagd` is the Linux version of `jtagserver`.

In a typical operation, the client application (for example, Intel Quartus Prime Programmer) starts the `jtagd`, which runs under your user account that is running the Intel FPGA software. In this mode, `jtagd` exits after two minutes of idleness.

If you want to connect to the JTAG Server remotely, then manually run `jtagd` as a process by running the command `<path>/quartus/linux64/jtagd` with no argument, followed by running the command `jtagconfig --enableremote <password>` to make JTAG Server accept connection from remote clients. This allows you to log off without terminating the `jtagd` process.

**Note:** For additional information about operating JTAG Server in a more secure manner, refer to the application note [AN 939: JTAG Connections Over SSH](#).

## 3.9. Adding Device Support and Other Intel FPGA Software to Existing Installation

To download and install additional device support or software tools to an existing Intel FPGA software package:

1. Visit the Download Center page at:

### 3. Downloading and Installing Intel FPGA Software

683472 | 2021.10.04



<https://www.intel.com/content/www/us/en/programmable/downloads/download-center.html>

2. Select the same edition and OS of the current Intel FPGA software installation.
3. Click the **Individual Files** tab.
4. Select the device support that you want to add.
5. Download by clicking the **Download** button next to each file name.
6. Wait for all the files to download completely before beginning the installation process.
7. Start the Intel Quartus Prime software.
8. Click **Tools** > **Install Devices** to open the Installation Wizard. If you do not see the **Install Devices** option, then on the Windows Start menu, go to **Intel FPGA <version number> <Lite/Standard/Pro> Edition > Device Installer**.
9. Install in the same location as the Intel Quartus Prime software.

## 3.10. Managing Multiple Versions and Copies of Intel FPGA Software

You can install multiple copies of the same version of software on the same computer.

- To specify which version you want to open by default, setting the `QUARTUS_ROOTDIR_OVERRIDE` environment variable.
- To preserve project compilation databases from an earlier version of the software before installing a newer version, open the design in the earlier version of the software and export a version-compatible database for the design.

### Related Information

[Intel Quartus Prime Environment Variables](#) on page 14

## 3.11. Updating Intel FPGA Software

To download available Intel FPGA Software updates:

1. Verify that you are using the latest version of the Intel FPGA software.
2. Visit the Download Center page at:  
<https://www.intel.com/content/www/us/en/programmable/downloads/download-center.html>
3. Select the same edition and OS of the current Intel FPGA software installation.
4. On the version-specific download page, click **Updates**.
5. Download by clicking the **Download** button next to each file name.
6. Wait for all the files to download completely before beginning the installation process.
7. Run the executable files to launch the installation wizard, which guides you through the installation process.

*Note:* For information about the latest updates, refer to the update release notes on [www.intel.com](http://www.intel.com).



## 3.12. Uninstalling Intel FPGA Software

### 3.12.1. Uninstalling on Windows

1. Right-click on the Windows Start menu and click **Apps and Feature**.
2. Point to **<software name> <version number> ► Uninstall <software name> <version number>**.

The installation wizard appears and guides you through the uninstallation process.

### 3.12.2. Uninstalling on Linux

1. Ensure that none of your project files are contained in the Intel FPGA software installation directory
2. Delete the software directory.



## 4. Licensing Intel FPGA Software

---

Most Intel FPGA software requires you to use a license to enable the software. Intel provides this license in a file named `license.dat`. The Intel Quartus Prime Lite Edition is free and does not require license. Questa\*-Intel FPGA Starter Edition is also free, but requires zero cost licenses. The Intel Quartus Prime Pro Edition software requires no license for Intel Cyclone 10 GX devices only.

When you purchase an Intel Quartus Prime software subscription, the license file supports:

- The version of the Intel Quartus Prime software you purchase
- All previous supported versions
- All versions released within a year of the purchase date

Most license entitlements for Intel Quartus Prime software and Intel FPGA IP cores are perpetual. Any exceptions for these products or complementary tools such as Questa\*-Intel FPGA Edition are noted in the license file and on the Self Service License Center as having a license expiration date.

Intel also uses licenses to enable additional software, such as purchased IP cores. For more information about licensing conditions of Intel FPGA software, refer to *Types of Intel FPGA Software Licenses*.

### Related Information

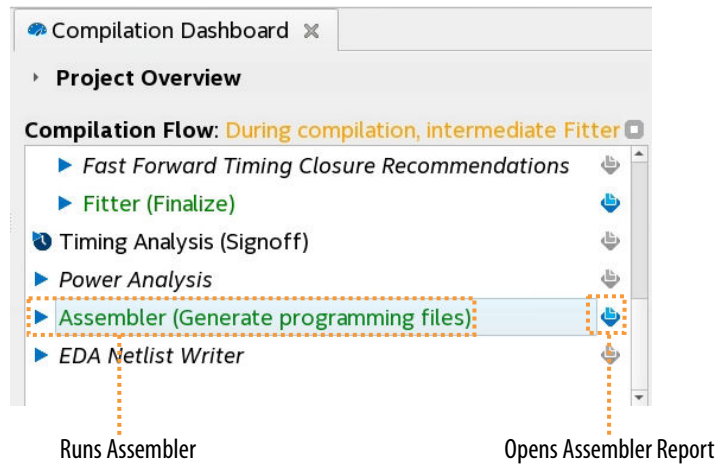
- [Types of Intel FPGA Software Licenses](#) on page 28
- [Intel FPGA Software Licensing Types](#)

### 4.1. Checking the IP License Status

You can check the license status of all IP in an Intel Quartus Prime project by viewing the Assembler report.

To generate and view the Assembler report in the GUI:

1. Click **Assembler** on the Compilation Dashboard.
2. When the Assembler (and any prerequisite stages of compilation) complete, click the **Report** icon for the Assembler in the Compilation Dashboard.

**Figure 1. Assembler Report Icon in Compilation Dashboard**


3. Click the **Encrypted IP Cores Summary** report.

**Figure 2. Encrypted IP Cores Summary Report**

Assembler Encrypted IP Cores Summary			
Show: <span>Visible</span> <span>Hide</span> <input type="text" value="&lt;&lt;Filter&gt;"/>			
	Vendor	IP Core Name	License Type
1	Intel FPGA	Signal Tap (6AF7 BCE1)	Licensed
2	Intel FPGA	Signal Tap (6AF7 BCEC)	Licensed

To generate and view the Assembler report at the command line:

1. Type the following command:

```
quartus_asm <project name> -c <project revision>
```

2. View the output report in `/output_files/<project_name>.asm.rpt`.

```
+-----+
; Assembler Encrypted IP Cores Summary ;
+-----+
; Vendor ; IP Core Name ; License Type ;
+-----+
; Intel ; PCIe SRIOV with 4-PFs and 2K-VFs (6AF7 00FB) ; Unlicensed ;
; Intel ; Signal Tap (6AF7 BCE1) ; Licensed ;
; Intel ; Signal Tap (6AF7 BCEC) ; Licensed ;
+-----+
```

## 4.2. Evaluating the Intel Quartus Prime Software

You can evaluate the Intel Quartus Prime software at no cost for a period of time.

#### 4. Licensing Intel FPGA Software

683472 | 2021.10.04



When you start the Intel Quartus Prime software, if the software cannot detect a valid license file, a dialog box with the following options appears:

- **Buy the Intel Quartus Prime Subscription Edition software**—launches your default Internet browser and displays the Buy Design Software page of [www.intel.com](http://www.intel.com), where you can view and purchase software.
- **Enter free mode with limited device family support**—Only available for Intel Quartus Prime Pro Edition software, the free mode supports Intel Cyclone 10 GX devices only.
- **Start the 30-day evaluation period with no license file**—allows you to use the Intel Quartus Prime software for 30 days without programming file support.
- **If you have a valid license file, specify the location of your license file**—displays the **License Setup** page of the **Options** dialog box, where you can specify the location of your license file.

Select the 30-day evaluation option to evaluate the software before purchase.

### 4.3. Licensing Intel FPGA Software Walkthrough

To set up a license for Intel FPGA software, follow these steps:

1. [Obtain Necessary Hardware Information](#) on page 23
2. [Request a License File from the Self-service Licensing Center](#) on page 24
3. Depending of the type of license that you use:
  - [Set Up a Fixed License](#) on page 24.
  - [Set Up a License in a Network License Server](#) on page 25.

#### Related Information

[Intel Quartus Prime Software License](#) on page 28

#### 4.3.1. Obtain Necessary Hardware Information

To generate a `license.dat` file, Intel requires information about the computer on which you want to install the license.

The following table indicates what information you need, depending on the type of license and the license host's operating system.

**Table 4. Hardware Information Necessary for Intel FPGA software licenses**

License Type	OS	Hardware Information	Notes
Fixed license	Windows or Linux	NIC ID or software guard ID	Legacy Quartus II software version 7.2 and earlier support software guards.
Floating license	Windows or Linux license servers	NIC ID	Use the ID from a physical NIC card, not a virtual ID.
	UNIX license servers	Host ID	Equivalent to the NIC ID.

- The Appendix contains instructions on obtaining the hardware information.

With the hardware information, you are ready to go to the Self-Service Licensing Center.

### Related Information

Getting Hardware Information for License on page 45

#### 4.3.2. Request a License File from the Self-service Licensing Center

You must log into the [Intel Self-Service Licensing Center](#) to create and manage your licenses. From the **Self-Service Licensing Center Home** page, use the new License Assistant. You can find this assistant on the bottom right corner of every page.



For new purchases, select one of the following options and navigate through the guided steps to generate and receive the license file by email:

- Find and generate license by License Activation Code
- View your unassigned licenses and generate license

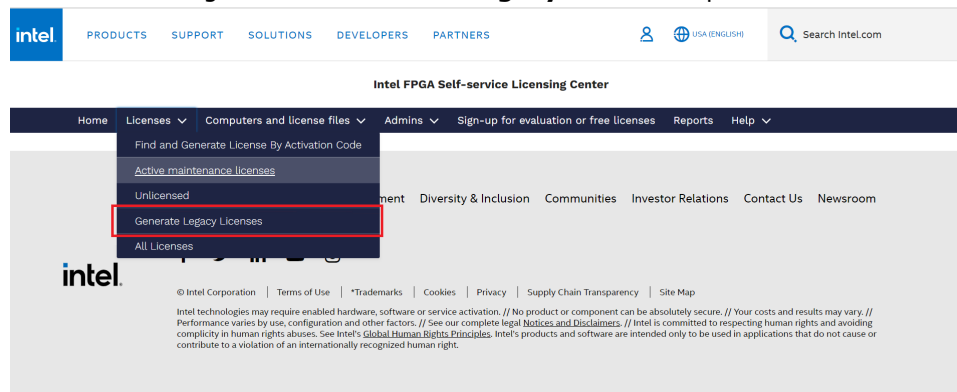
Intel sends the license file to the email address in your My Intel account profile.

*Note:*

If you do not receive your license email within 12 hours of requesting a license, or if you do not know all the required information to complete the process, contact customer support via the Help option in the Intel Self-Service Licensing Center.

If you have a floating, multi-user license, the FLEXlm licensing scheme allows you to set up two redundant license servers to serve licenses. You must request a license file for redundant servers from the Self-service Licensing Center.

For software, IP, or Development Kit legacy licenses with a maintenance expiration date prior to January 1, 2009, you can now obtain a license file via the Intel Self-Service Licensing Center's **Generate Legacy Licenses** option.



#### 4.3.3. Set Up a Fixed License

To set up a fixed license file (single user, single computer):

#### 4. Licensing Intel FPGA Software

683472 | 2021.10.04



1. Create a security copy of any existing `license.dat` file.
2. Save the `license.dat` file on your local hard drive. The preferred location is:

- Linux:

```
/usr/local/flexlm/licenses
```

- Windows:

```
C:\licenses\flexlm
```

*Note:* If you save the file in other location, make sure that the path contains only alphanumeric characters, and do not type any special characters or symbols, such as `!$%^&*<>`, empty spaces, or non-English characters.

3. Start the Intel Quartus Prime software.  
If the Intel Quartus Prime software cannot detect a valid license file, the **License Setup Required** dialog box prompts you to license, evaluate, or buy the software.

**Figure 3. License Setup Required Dialog Box**



4. Select **If you have a valid license file, specify the location of your license file**, and click **OK**.  
The **License Setup** page on the **Options** dialog box appears.
5. In the **License file** box, specify the full path name of the `license.dat` file, and click **OK**.

Alternatively, you can specify the license file location by using the `LM_LICENSE_FILE` environment variable. However, the location that you specify in the **License Setup** dialog box supersedes `LM_LICENSE_FILE`.

#### Related Information

[Intel Quartus Prime Environment Variables](#) on page 14

### 4.3.4. Set Up a License in a Network License Server

#### 4.3.4.1. Set Up a License File in the License Server

Perform the following steps in the license server:

1. Save the `license.dat` file. The preferred location is:



- Windows:

```
<drive>:\flexlm
```

- Linux:

```
/usr/local/flexlm/licenses
```

- Identify the hostname of the license server.
- If the license server uses Windows, specify the port number for the licensing manager.
  - Choose a number outside of the 27000–28000 range, and unique on the machine.

In Linux systems, the FLEXlm license manager automatically chooses a free port between 27000 and 27009.

- Modify the SERVER line in the `license.dat` file to include the hostname and port number of the license server.

```
SERVER <hostname> <8 or 12-character host or NIC ID> <host port number>
```

- Identify the path to the `alterad` vendor daemon executable.<sup>(4)</sup>

- Windows:

```
<installation_directory>\bin64\alterad.exe
```

- Linux:

```
<installation-directory>/linux64/alterad
```

- Optionally, identify the user-defined port numbers for the `alterad` daemons.
 

The FLEXlm software works with Internet firewalls that require you to specify port numbers in the license file on the SERVER line and each VENDOR or DAEMON line. The syntax to specify a port is `PORT=<number>`. Finally, you must allow firewall access to those port numbers.
- Modify the VENDOR line in the `license.dat` file to include the path to the `alterad` daemon<sup>(5)</sup> and the daemon's port number.

```
VENDOR alterad <path/to/alterad> [port=<user-defined port number>]
```

- If you are using a license file for the Questa\*-Intel FPGA Edition software, identify the path to the Siemens EDA (formerly Mentor Graphics) vendor daemon executable `mgcld`.<sup>(4)</sup>
- (Optional) Identify the user-defined port numbers for the `mgcld` daemon.

---

<sup>(4)</sup> If the license server does not provide the necessary vendor daemon, copy the required daemon from another machine, save the file in a location on the license server, and specify the daemon location on the license server in the license file.

<sup>(5)</sup> If the server path has spaces in it, enclose the full path in quotation marks.

#### 4. Licensing Intel FPGA Software

683472 | 2021.10.04



Allow firewall access to those port numbers.

10. Modify the `VENDOR` line in the `license.dat` file to include the path to the `mgcld` daemon<sup>(5)</sup> and the daemon's port number.

```
VENDOR mgcld <path/to/mgcld> [port=<user-defined port number>]
```

When you complete all modifications, ensure the license file conditions are met.

#### Example 2. Setting Up Floating Network Licenses on the License Server

The following example shows how to specify port numbers in a floating license file, where ports 1800, 1801, and 1802 provide access through a firewall.

```
SERVER myServer 0123456789ab 1800
VENDOR alterad ./alterad port=1801
VENDOR mgcld ./mgcld port=1802
```

With the modified `license.dat` file, you can set up the FLEXlm license manager on the license server, and finally start the license server.

#### 4.3.4.2. Launch the Licensing Server

The Intel Quartus Prime software administers licensing for single or multiple users in a network installation with the FLEXlm license manager software.

The requisites to configure a new license server are:

- System administration (Administrator) privileges.
- A valid `license.dat` license file.
- (Linux only) To run the FLEXlm `lmgrd` license server manager, make sure that the `/usr/tmp` directory exists.

To launch a new license server:

1. At a command prompt, type:

— Windows

```
<installation-directory>\bin64\lmgrd -c \path\to\license.dat
```

— Linux:

```
<installation-directory>/linux/lmgrd -c /path/to/license.dat
```

For more information about using the license manager server, refer to *Configuring the License Manager Server*.

#### Related Information

- [Installation Path](#) on page 10
- [Configuring the License Manager Server](#) on page 31
- [Other Licensing Actions](#) on page 34

#### 4.3.4.3. Specify a Network License Server in the Intel Quartus Prime Software

1. Start the Intel Quartus Prime software.



If the **License Setup Required** dialog box opens, select **If you have a valid license file, specify the location of your license file**, and click **OK**.

2. Click **Tools > License Setup**.
3. In the **License file** box, specify the port and location of the licensing server, and then click **OK**.

Use the `<port>@<hostname>` notation, where `<port>` is the license port number and `<hostname>` is the server's host name.

*Note:* Separate multiple license servers and node locking license files with ":" (Linux) or ";" (Windows).

Alternatively, you can specify the license file location by using the `LM_LICENSE_FILE` environment variable. However, the location that you specify in the **License Setup** dialog box supersedes `LM_LICENSE_FILE`.

*Note:* If you are using the legacy Quartus II software version 7.2 or earlier, you must also use a software guard. Attach the software guard to a parallel or USB port on your computer.

## 4.4. Types of Intel FPGA Software Licenses

Intel provides licenses for purchased versions of the Intel Quartus Prime software, purchased IP cores, development kits, and the Questa\*-Intel FPGA Edition software.

[Intel Quartus Prime Software License](#) on page 28

[Questa\\*-Intel FPGA Edition Software License](#) on page 29

[Intel Quartus Prime Lite Edition and Questa\\*-Intel FPGA Starter Edition Software License](#) on page 29

[Intellectual Property \(IP\) Cores Licenses](#) on page 29

[Development Kits Containing the Intel Quartus Prime Software](#) on page 30

[Nios II Embedded Design Suite License](#) on page 30

[Siemens EDA AXI Verification IP Suite License \(Intel FPGA Edition\)](#) on page 31

[University Program Software Licenses](#) on page 31

### 4.4.1. Intel Quartus Prime Software License

Most Intel Quartus Prime software products require license. The Intel Quartus Prime Pro Edition software provides a free mode which supports Intel Cyclone 10 GX devices only.

#### 4. Licensing Intel FPGA Software

683472 | 2021.10.04



When you purchase an Intel Quartus Prime subscription, you choose between a single-user license that is fixed to a specific computer, or a multi-user floating license.

- *Fixed license*—A stand-alone (node-locked, single-user) license is tied to the network interface card (NIC) ID of the computer on which you installed the software.
- *Floating license*—A floating network (multi-user) license is for users running the Intel Quartus Prime software on multiple computers connected on a network. A license server issues licenses to computers on demand. Floating licenses are not specific to an operating system. If you want to run the FPGA software on additional computers, you can purchase additional seats to add to your floating license after its original purchase.

**Note:** Intel continues to support operating system-specific floating licenses for the legacy Quartus II software version 6.1 and earlier.

#### Related Information

[License.dat Example Files](#) on page 43

#### 4.4.2. Questa\*-Intel FPGA Edition Software License

The Questa\*-Intel FPGA Edition software requires a valid license. This license expires 12 months after the date of purchase. To obtain a new or renew an expired license file for the Questa\*-Intel FPGA Edition software, go to the Self-Service Licensing Center. You can only renew license for the version that you purchased.

The Questa\*-Intel FPGA Edition license appears as a `FEATURE` line inside the Intel Quartus Prime `license.dat` file.

**Note:** Before using Questa\*-Intel FPGA Edition software, you must set an environment variable the location of license.

#### Related Information

[Specifying the License for the Questa\\*-Intel FPGA Edition Software](#) on page 37

#### 4.4.3. Intel Quartus Prime Lite Edition and Questa\*-Intel FPGA Starter Edition Software License

Intel offers the entry-level Intel Quartus Prime Lite Edition and Questa\*-Intel FPGA Starter Edition software. This software supports selected devices, provides limited feature support, and does **not** require license files.

#### 4.4.4. Intellectual Property (IP) Cores Licenses

You only need to purchase a full production license for licensed Intel FPGA IP cores after completing hardware testing and you are ready to use the IP in production. The rest of the time, you can use the Intel FPGA IP Evaluation Mode feature to evaluate IP cores.

You must purchase the license and generate a full production license key before you can generate an unrestricted device programming file. During Intel FPGA IP Evaluation Mode, the Intel Quartus Prime Compiler only generates a time-limited device programming file (`<project name>_time_limited.sof`) that expires at the time limit.



Intel licenses IP cores on a per-seat, perpetual basis. The license fee includes first-year maintenance and support. You must renew the maintenance contract to receive updates, bug fixes, and technical support beyond the first year.

Purchase a license through your local sales office or distributor. Intel FPGA partners can deliver third-party IP cores for evaluation with the appropriate license.

#### Related Information

- [AN 320: Using Intel FPGA IP Cores Evaluation Mode](#)
- [AN 343: OpenCore Evaluation of AMPP Megafunctions](#)
- [Intellectual Property and Reference Designs](#)
- [Self-Service Licensing Center](#)

### 4.4.5. Development Kits Containing the Intel Quartus Prime Software

Development kits that include the Intel Quartus Prime software include instructions for obtaining a license for that software.

You can purchase development kits from the Development Kits, Daughter Cards & Programming Hardware page on [www.intel.com](http://www.intel.com) or through a local sales office or distributor.

#### Related Information

[Development Kits, Daughter Cards and Programming Hardware](#)

### 4.4.6. Nios II Embedded Design Suite License

You can evaluate the Nios II processor without a license by using the Intel FPGA IP Evaluation Mode, and then purchase a license for the Nios II processor only after you complete hardware testing and are ready to go to production.

With the Intel FPGA IP Evaluation Mode feature, you can:

- Simulate the behavior of a Nios II processor within your system.
- Verify the functionality of your design, as well as evaluate its size and speed quickly and easily.
- Generate time-limited device programming files for designs that include Nios II processors.
- Program a device and verify your design in hardware.

A license for the Nios II processor core or the Nios II development kit allows you to create, compile, and generate non-time-limited FPGA programming files and flash programming files. If you do not have a license, the programming files that you can create are time-limited.

You do not need a license to develop software using only the Nios II Software Build Tools for Eclipse.

#### 4. Licensing Intel FPGA Software

683472 | 2021.10.04

##### Note:

- Starting with Nios II EDS in the Intel Quartus Prime Pro Edition version 19.2 and Intel Quartus Prime Standard Edition version 19.1, the Cygwin component in the Windows version of Nios II EDS has been removed and replaced with WSL.

Starting with Nios II EDS version 19.1, the Nios II EDS requires the Eclipse IDE component to be manually installed.

##### Related Information

- [Intel FPGA IP Evaluation Mode](#)  
In *Nios II Processor Reference Guide*
- [Installing Windows Subsystem for Linux \(WSL\) on Windows](#)
- [Installing Eclipse IDE into Nios II EDS](#)

#### 4.4.7. Siemens EDA AXI Verification IP Suite License (Intel FPGA Edition)

The Siemens EDA (formerly Mentor Graphics) Verification IP Suite (Intel FPGA Edition) provides bus functional models for simulation and verification. This software requires a license file.

If you are using a legacy version of Quartus II software (prior to version 12.1) and want to upgrade your software, you must regenerate your license file before continuing to use the Siemens EDA AXI Verification IP Suite (Intel FPGA Edition) Bus Functional Models and Inline Monitor (Siemens EDA Verification IP Suite (Intel FPGA Edition)) for AXI3 or AXI4.

To access Siemens EDA Verification IP Suite (Intel FPGA Edition) with the Intel Quartus Prime Lite Edition software, you must upgrade to version 12.1 or higher and purchase seat licenses by contacting your Intel sales representative.

#### 4.4.8. University Program Software Licenses

The University Program offers licensed and unlicensed FPGA software to participating universities.

For use in teaching, the University Program recommends the Intel Quartus Prime Lite Edition software, which does not require a license. The licensed commercial versions of the Intel Quartus Prime Standard and Pro Edition software are available for installation in university laboratory facilities. Refer to the University Program pages on [www.intel.com](http://www.intel.com) for more information.

##### Related Information

[University Program](#)

### 4.5. Configuring the License Manager Server

#### 4.5.1. Installing the FLEXlm License Manager Server Software on Another License Server

To install the FLEXlm license manager server software on an additional license server:

1. On the additional license server, create a directory that mimics the location of the Intel FPGA software:



- Windows

```
<installation-directory>\bin64
```

- Linux

```
<installation-directory>/linux64
```

- From your local computer, copy the following files from the location of the Intel FPGA software to the new directory on the licensing server:

- lmgrd
- lmutil
- alterad
- lmtools (Windows only)

#### 4.5.2. Upgrading the FLEXlm License Manager Server Software

To support network licensing, the Intel FPGA software requires the FLEXlm license manager server software version 11.16.1.0 or later. The installation process for Intel Quartus Prime software installs the FLEXlm software version 11.16.1.0. However, you should also verify that the FLEXlm software version of the license server is 11.16.1.0.

On the license server running the FLEXlm software, type at a command prompt:

Windows	<pre>&lt;FLEXlm system directory&gt;\lmgrd -v</pre> <pre>&lt;FLEXlm system directory&gt;\alterad -v</pre>
Linux	<pre>/&lt;FLEXlm system directory&gt;/lmgrd -v</pre> <pre>/&lt;FLEXlm system directory&gt;/alterad -v</pre>

If the `lmgrd` or `alterad` daemons are not version 11.16.1.0, you must upgrade both daemons with the versions that the Intel Quartus Prime software provides.

**Note:**

You can only have one vendor daemon running at a time on a single system. For example, `alterad` and `mgcld` can co-exist, but you cannot have two running daemons of `alterad`. If you have an Intel FPGA software license and Questa\*-Intel FPGA Edition Software license, and also have other Siemens EDA Questa\* software license. You can either merge all of them into a single file or put all Siemens EDA Questa\* software licenses in a single file. If you do the later, you need to remove the `VENDOR mgcld` line from the Intel FPGA software license file. You cannot have Siemens EDA licenses across two files for the same license server.

If a soft reload through the `lmutil lmreread` command failed, shut down the current license daemons before reloading them again.

To upgrade an older version of the FLEXlm software:

- Make a backup copy of your current `lmgrd` and `alterad` daemons.
- Copy the new versions of the files to the license server over your current daemons.



If you installed the FLEXlm software using the Intel Quartus Prime installer, the current versions of the lmgrd and alterad daemons are in:

Windows	<pre>&lt;installation-directory&gt;\quartus\bin64\alterad.exe</pre> <pre>&lt;installation-directory&gt;\quartus\bin64\lmgrd.exe</pre>
Linux	<pre>/&lt;installation-directory&gt;/quartus/linux64/alterad</pre> <pre>&lt;installation-directory&gt;/quartus/linux64/lmgrd</pre>

3. Restart the FLEXlm license server by typing at a command prompt:

Windows	<pre>&lt;FLEXlm system directory&gt;\lmutil lmdown -c &lt;license file path&gt;</pre> <pre>&lt;FLEXlm system directory&gt;\lmgrd -c &lt;license file path&gt;[-l &lt;optional log path&gt;]</pre>
Linux	<pre>/&lt;FLEXlm system directory&gt;/lmutil lmdown -c &lt;license file path&gt;</pre> <pre>/&lt;FLEXlm system directory&gt;/lmgrd -c &lt;license file path&gt; [-l &lt;optional log path&gt;]</pre>

#### Related Information

- [Rereading an Existing License File on a License Server](#) on page 34
- [License Daemon Downloads](#)

### 4.5.3. (Windows Only) Starting and Stopping the License Server

After changing the license configuration, you must restart the license server.

**Note:** Before you start or stop the license server, you must configure a new license server as a Windows service.

To start or stop the license server in the **LMTOOLS** dialog box:

1. Type the following command at a command prompt:
 

```
<installation-directory>\bin64\lmttools
```
2. In the **LMTOOLS** dialog box, click **Configuration using Services**.
3. Select the name of the license server, usually **Flexlm License Server**.
4. Click the **Start/Stop/Reread** tab.
5. Click **Start Server** or **Stop Server**.

### 4.5.4. (Windows Only) Starting the License Server Automatically

Before you set up the license server to start automatically at startup, you must configure the license server as a Windows service.

To start the license server automatically at startup:

1. At a command prompt, type:

```
<installation-directory>\bin64\lmttools
```

2. In the **LMTOOLS** dialog box, click **Configuration using Services**.
3. Select the name of the license server.



Usually **FlexIm License Server**.

4. Click the **Config Services** tab.
5. Turn on **Use Services**.
6. Turn on **Start Server at Power Up**.

#### 4.5.5. Rereading an Existing License File on a License Server

If you change the license file, you must reread the license file or restart the license server before you can run the Intel Quartus Prime software again. If you have an existing FLEXIm license server with an existing license file for the MAX+PLUS® II software, or software from another vendor, and the FLEXIm license manager server software is version 11.11.1, you can copy and paste the `FEATURE` lines from your Intel Quartus Prime `license.dat` file into your existing license file. Make sure you modify the `FEATURE` lines for your server.

- At a command prompt, type:

Windows	<code>&lt;Intel Quartus Prime system directory&gt;/linux64/lmutil lmreread</code>
Linux	<code>&lt;Intel Quartus Prime system directory&gt;\bin64\lmutil lmreread</code>

**Note:** You can see a list and description of the available FLEXIm options by typing `lmgrd -help` at a command prompt.

#### Related Information

[Set Up a License File in the License Server](#) on page 25

## 4.6. Other Licensing Actions

The Self-Service Licensing Center in the Intel webpage allows you to view, request, activate, and manage your software licenses. You must have a My Intel account to access the Self-Service Licensing Center.

Besides requesting licensing files and activating software, you can perform the following tasks with the Self-Service Licensing Center:

- View existing licenses—you can view all your existing licenses, including their expiration dates, available rehosts, and licensed users.
- Renew licenses—you can renew your existing licenses.
- Rehost licenses—you can transfer your existing licenses from one computer to another. You have a total of three rehosts for each license.
- Add seats to a floating license—you can add seats to your existing floating licenses.
- Manage license users—you can specify the licensed user for each of your existing licenses.
- View license history—you can view the license file history for each computer that you add to your My Intel account.

Additionally, you can also split a floating license, obtain a checkout license, or obtain a companion license with the Self-Service Licensing Center.



### Related Information

[Self-Service Licensing Center](#)

#### 4.6.1. Managing Licensed Users

You can assign or change users for your existing licenses. Licensed users are granted access to their assigned licenses.

1. Log on to your My Intel account from [www.intel.com](http://www.intel.com).
2. Access the Self-Service Licensing Center.
3. In the **Products and Users** tab, click the **License User** icon for the license you want to update in the **Licensed User** column of the **My Altera Software and IP Products** table.
4. In the **User Information** box, type the name and email address of the licensed user, and then click **Save**.

The licensed user receives an email notifying them that they have been added as a licensed user and now have access to the specific license that they have been assigned.

#### 4.6.2. Renewing a License

You can renew an existing license with the Self-Service Licensing Center. You must first purchase your license renewal, for example, from the Buy Design Software page of [www.intel.com](http://www.intel.com), before applying a renewal.

1. Log on to your My Intel account from [www.intel.com](http://www.intel.com).
2. Access the Self-Service Licensing Center.
3. In the **Renewal License** tab, click **Apply Renewals** to access the Apply Renewals page.
4. Select the product you want to renew, and click **Next**.
5. Select the renewal product you want to apply, and click **Next**.

#### 4.6.3. Creating a Computer Profile

Create a computer profile for your My Intel account to allow the assignment of licenses.

1. Log on to your My Intel account from [www.intel.com](http://www.intel.com).
2. Access the Self-Service Licensing Center.
3. In the **Computer and License Files** tab, click **Add Computer**.
4. In the **Add Computer** dialog box, select the **License Type** for your computer.  
Your software license type must match the license type of any license you want to assign your computer.
5. Select the **Primary Computer Type** for your computer.  
The primary computer type is the NIC ID, Host ID, or software guard ID.
6. Type your computer name in the **Primary Computer Name** box. You can specify any name meaningful to you in this box.



7. Type your NIC ID, Host ID, or software guard ID number in the **Primary Computer ID** box.
8. If you have a fixed license and want to use your license for multiple computers, you can specify up to two companion IDs in the **Companion ID** and **Companion ID 2** boxes.  
Your companion ID is your NIC ID, Host ID, or software guard ID. You can use your license or associated companion license only on one computer at a time.
9. If you have a floating license, you can set up your license on up to three redundant license servers. Type the NIC ID or Host ID for redundant servers in the **Redundant Server ID 2** and **Redundant Server ID 3** boxes.
10. Click **Submit**.

To edit an existing computer profile:

1. Click the **Update Computer** icon next to the computer that you want to edit in the **My Computers** table.
2. Make changes in the **Update Computers** dialog box.
3. Click **Submit** when you are finished making changes.

#### Related Information

[Getting Hardware Information for License](#) on page 45

### 4.6.4. Transferring a License File to Another Computer

You can rehost or transfer a license from one computer to another. You can rehost each license up to three times within your maintenance period.

1. Log on to your My Intel account from [www.intel.com](http://www.intel.com).
2. Access the Self-Service Licensing Center.
3. To rehost a license, follow these steps:
  - a. In the **Computers and License Files** tab, locate the product you want to rehost.
  - b. In the **Update Computer** column, click the **pencil** icon.
  - c. In the **Update Computer** dialog box, change the host ID in the **Primary Computer ID** box, and click the **Submit** button.
4. Click **Get License**.

Your license file is sent to the email address specified for your My Intel account profile. Your software license type must match the license type of any license you want to assign your computer.

#### Related Information

- [Set Up a License in a Network License Server](#) on page 25
- [Configuring the License Manager Server](#) on page 31

### 4.6.5. Adding Floating Seats

You can add floating seats to an existing floating license to increase the number of users available. Adding additional seats to an existing floating license may affect its maintenance expiration date.

#### 4. Licensing Intel FPGA Software

683472 | 2021.10.04



1. Log on to your My Intel account from [www.intel.com](http://www.intel.com).
2. Access the Self-Service Licensing Center.
3. In the **Add Seat License** tab, click **Add Seats** to access the My Add Seat License page.
4. On the Add Seats page, select a product to which you want to add additional seats, and click **Next**.
5. Select the product with the seats you want to apply and click **Next**.
6. Type the number of additional seats you want to add to your floating license in the **Number of Seats to Add** box.

When you add additional seats to an existing floating license, the new maintenance subscription term of the floating license is calculated by adding the total number of maintenance months for the existing and new seats, and then dividing by the total number of seats. Any partial number is rounded up to the nearest whole number.

#### Example 3. Floating License Example

If you have an existing floating license with ten seats that expires in five months and you purchase two additional seats, your updated floating license maintenance subscription would expire in seven months for all twelve seats.

#### 4.6.6. Specifying the License for the Questa\*-Intel FPGA Edition Software

The Questa\*-Intel FPGA Edition software supports licenses using the Siemens EDA license daemon `mgcld`.<sup>(6)</sup>

1. You can find the `mgcld` daemon in the following directories:

- Windows:

```
<Questa - Intel FPGA Edition system directory>\
```

- Linux:

```
<Questa - Intel FPGA Edition installation directory>/
```

2. Before starting the Questa\*-Intel FPGA Edition software, set the `MGLS_LICENSE_FILE` environment variable to the location and file name of the Questa\*-Intel FPGA Edition license file.

For example,

```
MGLS_LICENSE_FILE (<Questa installation directory>/licenses/eda/license.dat)
```

or with the `<port>@<hostname>` notation `1900@set`, where `<port>` is the license port number and `<hostname>` is the server's host name.

The Questa\*-Intel FPGA Edition software license expires 12 months after the date of purchase, at which point you can no longer use the software. You must obtain an updated Intel Quartus Prime software subscription license file from the Self-Service Licensing Center every 12 months to renew your license for the specific Questa\*-Intel FPGA Edition software version that you purchase. You can use only the version of Questa\*-Intel FPGA Edition software that you purchase with the updated license.

---

<sup>(6)</sup> The Questa\*-Intel FPGA Edition software license does not support Remote Desktop access with node-locked, uncounted licenses.



### Related Information

- [Set Up a License File in the License Server](#) on page 25
- [Self-Service Licensing Center](#)

## 4.7. Syntax of license.dat License File

The `license.dat` file must meet these conditions to ensure license integrity:

- The text editor does not append `.txt` or any other file extension to the file name, for example, `license.dat.txt`, otherwise the software cannot find the license.
- The last `FEATURE` line ends with a carriage return (new line).
- Any `FEATURE` line that wraps to a second or third line must have a backslash (`\`) at the end of each line to indicate that the statement continues. However; `VENDOR_STRING` statements that wrap to multiple lines do not need a backslash (`\`). The backslash should only be added outside the line with double quotation marks (`"`).
- The license file does not have hidden control characters:
  - Opening the license file with any software other than a plain text editor may add hidden characters.  
For example, WYSIWYG editors such as Microsoft Excel, Word, or WordPad, may insert special control characters such as a tab or carriage return. Pasting special control characters into another plain text document can corrupt the license, even if those characters are invisible in a plain text editor.
  - If you edit the license file in one operating system, then copy the license file in another operating system, and then copy the license file to the Windows operating system, the second operating system may insert unwanted control characters into the license file. Make sure that you correctly convert the file.

For information about the contents of a license file and example licenses, refer to *About Intel FPGA License Files*

### Related Information

[About Intel FPGA Software License Files](#) on page 39



## 5. About Intel FPGA Software License Files

---

This section contains details about the syntax of Intel FPGA Software License Files.

### Related Information

- [Configuring the License Manager Server](#) on page 31
- [Set Up a License File in the License Server](#) on page 25

### 5.1. License File Troubleshooting

Use this information to troubleshoot and modify and edit Intel FPGA software license files.

### Related Information

- [Software Licensing Troubleshooter](#)
- [Intel FPGA Licensing](#)

### 5.2. License File Components

This topic describes the different parts of the Intel FPGA license file (`license.dat`).

#### 5.2.1. License File Header

Intel FPGA license files have headers that contain identifying information specific to the license, such as the type of license, the primary computer and companion IDs, issue and expiration dates, and a product license summary.

The following example shows the header of a floating server license file that contains a license for the Intel Quartus Prime software and the Questa\*-Intel FPGA Edition software. The license was issued on June 09, 2021, is a perpetual license with no defined companion IDs, and has a maintenance expiration date of September 2019.

```
# Intel Corporation Software and/or Intellectual Property License File
# Issued 09 June 2020
# Upgrade to these products will no longer be available after the Maintenance
Expiration
# date unless licenses are renewed.
# Floating Server License
# Primary Machine Name-xxxxxxx
# Primary Machine ID-Host ID XXXXXXXXXXXXX
# Redundant Server 2-N/A
# Redundant Server 3-N/A
# Product License Summary:
# QUARTUS PRIME PRO FLOAT, 1 Seat(s)
# - Maintenance Expiration of 2019.09
# Quartus II SE Floating, 2 Seat(s)
# - Maintenance Expiration of 2018.02
# Quartus II SE Floating, 1 Seat(s)
# - Maintenance Expiration of 1899.12
```



```
# Questa Intel FPGA Edition Software, 1 Seat(s)
# - Maintenance Expiration of 2015.08
# - License Expires 09-Jun-2022
...
```

### 5.2.2. SERVER, VENDOR, and USE\_SERVER Lines

A floating license file starts with `SERVER`, `VENDOR`, and `USE_SERVER` lines to describe the license server. Fixed license files do not contain these entries. These license lines are structured as shown in the following example:

```
SERVER <hostname> <8 or 12-character host or NIC ID> <port>
```

```
VENDOR <daemon> <path>
```

```
USE_SERVER
```

The `USE_SERVER` line designates the license file as a floating license.

You can configure up to three redundant network license servers with the FLEXlm licensing scheme. In this case, there are three `SERVER` lines, one for each license server machine. The first server specified is the master.

Typically, a license file contains multiple `VENDOR` lines; one for each required license vendor daemon. Some license files might use the `DAEMON` keyword instead of `VENDOR`.

**Table 5. Elements of the `SERVER` and `VENDOR` Lines for Floating Licenses**

Element Name	Editable	Description
hostname	yes	The host name of the server in the <code>license.dat</code> file.
8- or 12-character host or NIC ID	no	The PC NIC or UNIX Host ID of the server. You must supply this ID to <a href="http://www.intel.com">www.intel.com</a> when purchasing the license.
port	n/a	The port number.
daemon	no	The vendor daemon name: <ul style="list-style-type: none"> <li><code>alterad</code> daemon: Intel Quartus Prime software</li> <li><code>mgcld</code> daemon: Questa*-Intel FPGA Edition software</li> <li><code>armlmd</code> daemon: ARM features of the ARM Development Suite (ADS)</li> </ul>
path	yes	The path to the vendor daemon on the server. You must edit this entry.

### 5.2.3. FEATURE and INCREMENT Lines

All Intel FPGA license files contain `FEATURE`, and possibly `INCREMENT` lines, to describe the software features that are licensed by the `license.dat` file. Certain features use `INCREMENT` lines, which are structured similarly as `FEATURE` lines. The `FEATURE` line is structured as shown in the following example:

```
FEATURE <name> <daemon> <version> <expiration> <# of licenses> <authcode>
[<vendor_string>] [<hostid_lock>] [SIGN] [SUPERCEDE] [<issuer>]
```

## 5. About Intel FPGA Software License Files

683472 | 2021.10.04



A backslash (\) character indicates that the FEATURE or INCREMENT line continues on the next line in the text file. The last line of each FEATURE line does not require the backslash. Elements in brackets [ ] are present only in some license FEATURE or INCREMENT lines. The example below shows a FEATURE line, followed by an INCREMENT line.

```
# FEATURE START
# The following is a license file for the Quartus PRIME PRO Edition Fixed
# Number of seat licenses is 1
# No license expiration date
FEATURE maxplus2 alterad 2021.05 permanent uncounted B36133371D28 \
  HOSTID=e4a4716b48d8 SIGN="1A0F EECF 699E A64A 1E3A 83D1 BADC \
  7763 B15D 98FA EF7F A371 E02F 4D9F D9CF 0BCE 2A9C 2650 20FA \
  42CF ABD8 006A D037 DA2C 703B 9CFC 43E5 1A01 0C56 4D6D"
FEATURE quartus_pro alterad 2021.05 permanent uncounted 46499B9E717E \
  HOSTID=e4a4716b48d8 TS_OK SIGN="08EF B762 CF6A 18CC FF95 B124 \
  2FB0 F8F0 7A43 CAFE C88E DC28 5AC4 5F69 FFFB 1C1C DBF6 7A79 \
  87E7 FFEF D8C2 F96F 461A 0D38 DB4B 4E5B 840E F3F6 F314 4DE9"
# FEATURE END
#####

INCREMENT alteramtivsim mgcld 2022.06 9-jun-2022 1 4F127AC9C4D11138B611 \
  \
  VENDOR_STRING=98B0746B ISSUER=Intel SN=175935529 SIGN2="0FEF B2F5 0646 \
  9F02 0405 423D D8B4 B072 3EFE 6CAA F66B 5E40 1C50 AAFE 3C0A 1869 269F \
  492D 2D25 1CFE 1AA1 060D F7E3 96A6 7BA8 6CE1 B7D1 AC24 2797 376B"

# FEATURE END
#####
```

Table 6. Elements of the FEATURE and INCREMENT Code Lines

Element Name	Description
name	The feature name.
daemon	The name of the vendor daemon that manages the feature. This name corresponds to a VENDOR line in network/server licenses.
version	Any version of software released up to and including this date is licensed. Software with a later version date does not function using this license file.
expiration	The date after which the software or service pack cannot be used. The expiration date applies to trial licenses. For Intel FPGA license subscriptions, the expiration is permanent.
# of licenses	The number of concurrent users that can run each feature. For some license types, the entry is uncounted.
authcode	An authorization code generated by Intel.
vendor_strings	Specified for certain third-party license features.
hostid_lock	Specified if a feature is node-locked to a software guard, NIC ID, or hard-disk serial number. Intellectual property (IP) Intel FPGA IP functions often contain node-locked feature lines in floating licenses. <ul style="list-style-type: none"> <li>Software guard: HOSTID=GUARD_ID=&lt;Software guard number&gt;</li> <li>Network interface card (NIC): HOSTID=&lt;NIC ID&gt;</li> <li>Hard-disk serial number: HOSTID=DISK_SERIAL_NUM=&lt;Hard-disk ID&gt;</li> </ul>
issuer	The name of the Questa* license issuer.
sign	An authorization code generated by Intel.
TS_OK	Enables remote log on for fixed license Intel Quartus Prime software (includes Intel FPGA IP, Nios II Software Build Tools for Eclipse, and DSP Builder).



The following table describes the available Intel FPGA license features. This table does not include license features for any intellectual property (IP), development kits, or special license codes used for the Intel Quartus Prime Lite Edition software.

**Table 7. Available Intel FPGA License Features**

Feature Name	Description
quartus	Intel Quartus Prime Standard Edition software
quartus_pro	Intel Quartus Prime Pro Edition software
intelqsim	Questa*-Intel FPGA Edition Simulator <b>(1)</b>
intelqsimstarter	Questa*-Intel FPGA Edition Simulator <b>(2)</b>

### 5.3. Using a FLEXlm Options File

If the license file contains `FEATURE` and `INCREMENT` lines for the same software but different maintenance dates, the license server may grant newer licenses from the `FEATURE` line to users running older versions of software, which leaves fewer licenses for users running newer versions of software.

By default, the license server grabs licenses from the first matching `FEATURE` or `INCREMENT` line in the license file. If all the licenses in the first `FEATURE` or `INCREMENT` line are in use, the license server attempts to grab licenses from the next `FEATURE` or `INCREMENT` lines, until the end of the license file. A FLEXlm options file allows you to control which users can grab which licenses by creating pools of licenses for each `FEATURE` and `INCREMENT` line.

To create a FLEXlm options file that controls a floating license server:

1. In a new text file, add a `GROUP` line for each user group you want to create, with a list of user names, separated by spaces for each group, as follows:

```
GROUP <group name> <username 1> <username 2>
```

Users can be members of more than one group as shown in the following example:

```
GROUP quartus2010 kjones bknight root administrator
```

```
GROUP quartus2009 bknight cface root administrator
```

2. Add an `INCLUDE` line for each `INCREMENT` and `FEATURE` line in the license file for the product you want to control.

Set the `VERSION` keyword to the maintenance date or version date on the `INCREMENT` or `FEATURE` line from the license file. The `GROUP` field controls which group or groups can use the license line as follows:

```
INCLUDE <product name>:VERSION=<maintenance date> GROUP <group name>
```



For example:

```
INCLUDE quartus:VERSION=2010.12 GROUP quartus2010
INCLUDE quartus:VERSION=2009.06 GROUP quartus2009
INCLUDE ip_base:VERSION=2010.12 GROUP quartus2010
INCLUDE ip_base:VERSION=2009.06 GROUP quartus2009
```

3. Save the options file `<filename>.dat`.
4. Add the options file as the last option on the `VENDOR` line in the license file, as shown in the following example:

```
VENDOR alterad "C:\lic\alterad.exe" "C:\lic\alteraOptions.dat"
```

5. Restart the FLEXlm license server, or reread the license file.

### Related Information

[Rereading an Existing License File on a License Server on page 34](#)

## 5.4. License.dat Example Files

This topic includes several example `license.dat` files. License files vary, depending on the type of licenses and the software that is enabled. License examples in this section should be used only for reference; they are not valid for actual licensing.

### 5.4.1. Fixed PC Software Guard License Example

The following example shows a `license.dat` file that contains a license for the IP Base Suite and the Intel Quartus Prime Pro Edition software. This license file works on a PC that has the host ID `e4a4716b48d8`.

```
#####
FEATURE START# FEATURE START
# The following is a license file for the IP Base Suite Package part number for
IP
# Base Suite (NCO, FFT, FIR Compiler II)
# Number of seat licenses is 1
# No license expiration date
PACKAGE ip_base alterad COMPONENTS="6AF7_00D8 6AF7_0014 6AF7_0034" \
  OPTIONS=SUITE SIGN="153B EB57 5B09 B585 D1D5 3EA8 1CC3 CB52 \
  DC01 2214 9CDA 4A26 598F 76C2 C126 00FE 5122 A135 BCB7 9D0A \
  2BAD 5F03 BE38 FE97 EDF8 5B2A 55F2 99E3 1468 72B8"
INCREMENT ip_base alterad 2021.05 permanent uncounted CBFAF3E3783C \

VENDOR_STRING="iiiiiihdLkhIIIIIIUPDuiaaaaaaallX38DDDDDDDDpjz5cd
dddddtdtmGzGJJJJJJJbqIh0uuuuuuuYyWiVVVVVVVbP0FVHHHHHHHHBUEakffff
ffffD2FFRkkkkkkkkkWL$84" \
  HOSTID=e4a4716b48d8 TS_OK SIGN="0571 823B B38A 3D50 F9F5 B760 \
  77A7 08A3 5195 999C A11D 901B 54A6 AB40 4438 0137 FD4A 6625 \
  51C9 3A43 7C37 DADE 84D8 6FC6 1A9B E31C 1972 A291 8EBF A56B"
# FEATURE END
#####
# FEATURE START
# The following is a license file for the Quartus PRIME PRO Edition Fixed
# Number of seat licenses is 1
# No license expiration date
FEATURE maxplus2 alterad 2021.05 permanent uncounted B36133371D28 \
  HOSTID=e4a4716b48d8 SIGN="1A0F EECF 699E A64A 1E3A 83D1 BADC \
  7763 B15D 98FA EF7F A371 E02F 4D9F D9CF 0BCE 2A9C 2650 20FA \
  42CF ABD8 006A D037 DA2C 703B 9CFC 43E5 1A01 0C56 4D6D"
FEATURE quartus_pro alterad 2021.05 permanent uncounted 46499B9E717E \
  HOSTID=e4a4716b48d8 TS_OK SIGN="08EF B762 CF6A 18CC FF95 B124 \
  2FB0 F8F0 7A43 CAFE C88E DC28 5AC4 5F69 FFFB 1C1C DBF6 7A79 \
```



```

87E7 FFEF D8C2 F96F 461A 0D38 DB4B 4E5B 840E F3F6 F314 4DE9"
# FEATURE END
#####
# End of Intel Corporation Software and/or Intellectual Property
License File. Issued 06/09/2021

```

### 5.4.2. Floating Network License Example

The example below shows a `license.dat` file that contains a license for the Intel Quartus Prime Pro Edition software and the IP Base Suite. This license specifies that a single user can run the software and works when the PC with NIC ID 09876543 is set up as a license server and the user points to the license location.

```

#####
SERVER <hostname> 09876543 <port number>
VENDOR alterad <path to daemon executable>
VENDOR mgcld <path to daemon executable>
USE_SERVER
#####
# FEATURE START
# The following is a license file for the IP Base Suite Package part number for
IP
# Base Suite (NCO, FFT, FIR Compiler II)
# Number of seat licenses is 1
# No license expiration date
PACKAGE ip_base alterad COMPONENTS="6AF7_00D8 6AF7_0014 6AF7_0034" \
  OPTIONS=SUITE SIGN="153B EB57 5B09 B585 D1D5 3EA8 1CC3 CB52 \
    DC01 2214 9CDA 4A26 598F 76C2 C126 00FE 5122 A135 BCB7 9D0A \
    2BAD 5F03 BE38 FE97 EDF8 5B2A 55F2 99E3 1468 72B8"
INCREMENT ip_base alterad 2019.09 permanent 1 54C8E8A1FBA8 \

VENDOR_STRING="iiiiiihdLkhIIIIIIIIUPDuiaaaaaaa11X38DDDDDDDDpjz5cd
ddddddtmGzGJJJJJJJbqIh0uuuuuuuugYYWiVVVVVVVVbp0FVHHHHHHHHBUEakffff
ffffD2FFRkkkkkkkkWL$84" \
  DUP_GROUP=UHD SIGN="02CC FF71 2A69 9432 0127 5793 5D3D C5B9 \
    B2D4 F31C 63E4 5735 3333 0156 7A6F 0A06 683D E4DB EC19 EF83 \
    DFCA CDBB A994 042B F35B ABE7 4215 391B 4ADB 0A70"
# FEATURE END
#####
# FEATURE START
# The following is a license file for the Quartus PRIME PRO Edition Floating
# Number of seat licenses is 1
# No license expiration date
FEATURE quartus_pro alterad 2019.09 permanent 1 5BF77FD6D23D \
  SIGN="03E9 8852 506A 279B EEB5 D51B 7019 13CB 14EF 386E 5A1A \
    3270 4A3B 3289 E028 0CBA CF01 DF36 30CC CAEE A561 AB7D 5FEE \
    4B91 E405 0923 2FEO 51F7 D3D2 7DE7"
# FEATURE END
#####
# End of Intel Corporation Software and/or Intellectual Property
License File. Issued 06/09/2021

```



## A. Getting Hardware Information for License

This appendix shows how to obtain information about the computer on which you want to install the Intel FPGA software license. Most licenses require a network interface card (NIC) ID, which is the physical address of your Ethernet card.

**Table 8. Hardware Information Necessary for Intel FPGA software licenses**

License Type	OS	Hardware Information	Notes
Fixed license	Windows or Linux	NIC ID or software guard ID	Legacy Quartus II software version 7.2 and earlier support software guards.
Floating license	Windows or Linux license servers	NIC ID	Use the ID from a physical NIC card, not a virtual ID.
	UNIX license servers	Host ID	Equivalent to the NIC ID.

### A.1. Identifying Host's NIC ID

A network interface card (NIC) ID is a 12-digit hexadecimal string embedded in the network card that uniquely identifies a computer. You must identify the NIC ID of the computer that hosts the software installation or the license server.

*Note:* If you have a triple redundant license server for floating licenses, the first server that you specify is the master. Use the master server's NIC ID or host ID.

#### A.1.1. Finding the NIC ID for Windows

Use the `ipconfig` utility to find the NIC ID on Windows.

- At a command prompt, type:

```
ipconfig /all
```

The command prints network information. The NIC Address appears as **Physical Address**.



**Figure 4. NIC ID in Output of ipconfig Command**

```
Ethernet adapter Ethernet 2:

Connection-specific DNS Suffix . : 
Description . . . . . : 
Physical Address. . . . . : 
DHCP Enabled. . . . . : 
Autoconfiguration Enabled . . . . : 
IPv4 Address. . . . . : 
Subnet Mask . . . . . : 
Default Gateway . . . . . : 
DNS Servers . . . . . : 

Primary WINS Server . . . . . : 
Secondary WINS Server . . . . . : 
NetBIOS over Tcpip. . . . . :
```

If the system has more than one network card, you can use the NIC ID of any network card connected to the computer.

### A.1.2. Finding the NIC ID on Linux

Use the `ifconfig` utility to find the NIC ID on Linux.

- At a command prompt, type:

```
/sbin/ifconfig eth0
```

The command prints network information. The NIC Address appears as **HWaddr**.

**Figure 5. NIC ID in the Output of ifconfig Command**

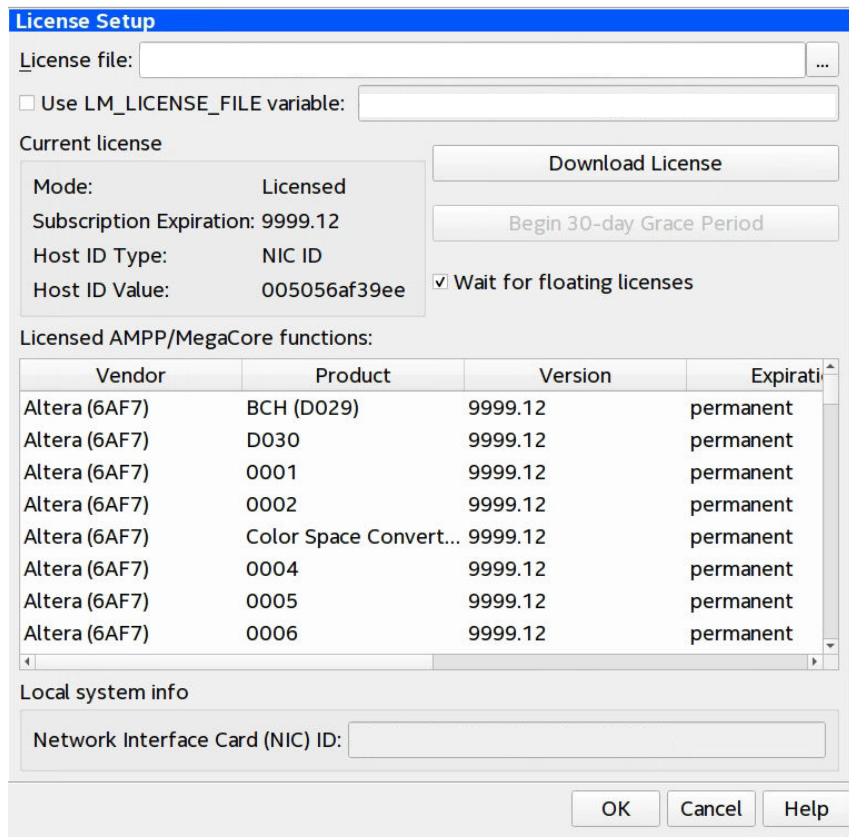
```
[root@localhost ~]# /sbin/ifconfig eth0
eth0      Link encap:Ethernet  HWaddr 08:00:27:00:00:00
          inet addr:192.168.1.100  Bcast:192.168.1.255  Mask:255.255.254.0
          inet6 addr: fe80::200:1:1:1:1 Scope:Link
          UP BROADCAST RUNNING MULTICAST  MTU:1500  Metric:1
          RX packets:1000000 errors:0 dropped:0 overruns:0 frame:0
          TX packets:1000000 errors:0 dropped:0 overruns:0 carrier:0
          collisions:0 txqueuelen:1000
          RX bytes:1000000000 (1.0 GiB)  TX bytes:1000000000 (1.0 GiB)
          Interrupt:16 Memory:1000000-1010000
```

### A.1.3. Finding the NIC ID in the Intel Quartus Prime Software

Use the following method to find the NIC ID in the Intel Quartus Prime software:

- Display the **License Setup** settings by clicking **Tools** > **License Setup**.

Figure 6. NIC ID in License Setup Settings



The computer's NIC ID appears under **Local System info** in the **Network Interface Card (NIC) ID** field.

#### A.1.4. Find NIC ID on Windows Using FLEXlm Utilities

- At a command prompt, type:

```
<installation-directory>\bin64\lmutil lmhostid
```

#### Related Information

[Installation Path](#) on page 10

### A.2. UNIX Host ID

The license server host ID for UNIX is equivalent to the NIC ID.

### A.3. Locating Your Hard-Disk Serial Number

Some versions of software use the hard disk serial number for licensing. A hard-disk serial number is an eight-character hexadecimal ID that identifies the PC with the Intel FPGA license. If the ID is not eight characters, include a leading zero.



### A.3.1. To find the hard-disk serial number on a Windows PC

- Type the following command at a command prompt:

```
vol c:
```

In the output of the command, the hard-disk serial number is the volume serial number.

### A.3.2. To find the hard-disk serial number if the Intel Quartus Prime software is installed on your computer

- Click **Tools > License Setup**. The hard-disk serial number appears under **Local Systems info** in the **C: drive serial number** field. Verifying the hard-disk serial number with the Intel Quartus Prime software ensures that you use the correct hard-disk serial number if your PC has multiple hard drives.

### A.4. Identifying the USB Software Guard ID

Legacy Quartus II software version 7.2 and earlier support software guards. A USB software guard ID is a ten-character alphanumeric number beginning with the letter T.

- If the Intel Quartus Prime software is installed and the guard is attached, clicking the **Tools > License Setup**. Your software guard ID appears under **Local System info** in the **Software Guard ID** field.
- Otherwise, find the software guard ID on the printed label on the guard.



## B. Intel FPGA Software Installation and Licensing Archives

If the table does not list a software version, the user guide for the previous software version applies.

Intel Quartus Prime Version	User Guide
21.2	<a href="#">Intel FPGA Software Installation and Licensing</a>
21.1	<a href="#">Intel FPGA Software Installation and Licensing</a>
20.4	<a href="#">Intel FPGA Software Installation and Licensing</a>
20.3	<a href="#">Intel FPGA Software Installation and Licensing</a>
20.2	<a href="#">Intel FPGA Software Installation and Licensing</a>
20.1	<a href="#">Intel FPGA Software Installation and Licensing</a>
19.4	<a href="#">Intel FPGA Software Installation and Licensing</a>
19.3	<a href="#">Intel FPGA Software Installation and Licensing</a>
19.1	<a href="#">Intel FPGA Software Installation and Licensing</a>
18.1	<a href="#">Intel FPGA Software Installation and Licensing</a>
18.0	<a href="#">Intel FPGA Software Installation and Licensing</a>
17.1	<a href="#">Intel FPGA Software Installation and Licensing</a>
17.0	<a href="#">Intel FPGA Software Installation and Licensing</a>
16.1	<a href="#">Altera Software Installation and Licensing</a>
16.0	<a href="#">Altera Software Installation and Licensing</a>
15.1	<a href="#">Altera Software Installation and Licensing</a>
15.0	<a href="#">Altera Software Installation and Licensing</a>
14.1	<a href="#">Altera Software Installation and Licensing</a>

Intel Corporation. All rights reserved. Intel, the Intel logo, and other Intel marks are trademarks of Intel Corporation or its subsidiaries. Intel warrants performance of its FPGA and semiconductor products to current specifications in accordance with Intel's standard warranty, but reserves the right to make changes to any products and services at any time without notice. Intel assumes no responsibility or liability arising out of the application or use of any information, product, or service described herein except as expressly agreed to in writing by Intel. Intel customers are advised to obtain the latest version of device specifications before relying on any published information and before placing orders for products or services.

\*Other names and brands may be claimed as the property of others.



## C. Document Revision History for Intel FPGA Software Installation and Licensing

Document Version	Intel Quartus Prime Version	Changes
2021.10.04	21.3	<ul style="list-style-type: none"> <li>Added a note about additional information available for setting up JTAG server connection over SSH in <i>Installing and Configuring jtagserver on Windows</i> and <i>Installing and Configuring a Local JTAG Server (jtagd) on Linux</i>.</li> <li>Changed all occurrences of "ModelSim - Intel FPGA Edition" to "Questa - Intel FPGA Edition".</li> <li>Changed all occurrences of Mentor Graphics to Siemens EDA.</li> <li>Renamed "Mentor Graphics AXI Verification IP Suite (Intel FPGA Edition)" to "Siemens EDA AXI Verification IP Suite (Intel FPGA Edition)".</li> <li>Renamed all occurrences of "ModelSim - Intel FPGA Starter Edition" to "Questa*-Intel FPGA Starter Edition".</li> <li>In <i>Software Available in the Download Center</i>, changed MD5 Message Digest Algorithm to SHA-1.</li> <li>Updated <i>Intel Quartus Prime Environment Variables</i> topic with additional information for PATH variable and added a sample script to setup the environment.</li> <li>In <i>Questa*-Intel FPGA Edition Software Requirements</i>, updated the OS requirements.</li> <li>Updated the licensing details in <i>Licensing Intel FPGA Software</i>.</li> <li>Under <i>Chapter 4, Licensing FPGA Software Walkthrough</i> section, removed <i>Activate Product</i> topic and updated the instructions in <i>Request a License File from the Self-service Licensing Center</i>.</li> <li>Updated the Ubuntu OS prerequisites in <i>Software Requirements</i>.</li> <li>Updated the details for Questa in <i>Specifying the License for the Questa*-Intel FPGA Edition Software</i>.</li> <li>Changed <i>alteramtivsim</i> and <i>alteramtivlog</i> to <i>intelqsim</i> and <i>intelqsimstarter</i> and removed a note about <i>alteramtivsim</i> and <i>alteramtivlog</i> license subscriptions in <i>FEATURE and INCREMENT Lines</i>.</li> </ul>
2021.06.21	21.2	<ul style="list-style-type: none"> <li>Updated the Red Hat Enterprise Linux versions to 7 and 8 in <i>Software Requirements and ModelSim* - Intel FPGA Edition Software Requirements</i>.</li> <li>Added Questa*-Intel FPGA Edition to the list in <i>Software Available in the Download Center</i>.</li> <li>Added a note about the Intel Quartus Prime software installer in <i>Installing Intel FPGA Software at the Command Prompt</i>.</li> <li>Added a note about the <code>--install-lic</code> option for <code>--accept_eula</code> in <i>Command-Line Options</i>.</li> <li>Added Windows 10 method of starting the Intel FPGA software in <i>Starting the Intel Quartus Prime Software</i>.</li> <li>Removed the topic <i>Installing on Red Hat Enterprise Linux 6</i> as RHEL 6 is no longer supported.</li> <li>Added Windows 10 method of adding device support in <i>Adding Device Support and Other Intel FPGA Software to Existing Installation</i>.</li> </ul>

**continued...**

Intel Corporation. All rights reserved. Intel, the Intel logo, and other Intel marks are trademarks of Intel Corporation or its subsidiaries. Intel warrants performance of its FPGA and semiconductor products to current specifications in accordance with Intel's standard warranty, but reserves the right to make changes to any products and services at any time without notice. Intel assumes no responsibility or liability arising out of the application or use of any information, product, or service described herein except as expressly agreed to in writing by Intel. Intel customers are advised to obtain the latest version of device specifications before relying on any published information and before placing orders for products or services.

\*Other names and brands may be claimed as the property of others.

## C. Document Revision History for Intel FPGA Software Installation and Licensing

683472 | 2021.10.04



Document Version	Intel Quartus Prime Version	Changes
		<ul style="list-style-type: none"> <li>Added Windows 10-specific instruction to <i>Uninstalling on Windows</i>.</li> <li>Made minor updates to requirements in <i>Intel High Level Synthesis Compiler Software Requirements</i>.</li> <li>Updated the license sample in <i>FEATURE and INCREMENT Lines</i>.</li> <li>Updated the license sample in <i>Floating Network License Example</i>.</li> <li>Updated the license sample in <i>Fixed PC Software Guard License Example</i>.</li> <li>Removed Windows 7 support.</li> </ul>
2021.03.29	21.1	<ul style="list-style-type: none"> <li>Updated <i>Installing Windows Subsystem for Linux (WSL) on Windows</i> to include an additional package that is necessary when building a custom library with Nios II EDS.</li> <li>Updated the requirements in <i>Minimum Hardware Requirements</i> and <i>Software Requirements</i> topics.</li> </ul>
2020.12.14	20.4	<ul style="list-style-type: none"> <li>Updated the list of Ubuntu prerequisite packages in <i>Software Requirements</i>.</li> <li>Renamed the topic <i>Installing and Configuring a JTAG Server</i> and its subtopics.</li> <li>Updated the topics <i>Installing and Configuring jtagserver on Windows</i> and <i>Installing and Configuring a Local JTAG Server on Linux</i> completely.</li> <li>Document maintenance updates.</li> </ul>
2020.09.28	20.3	<ul style="list-style-type: none"> <li>Removed the occurrences of SoC EDS from the guide.</li> <li>Added additional instructions in <i>Installing Windows Subsystem for Linux (WSL) on Windows</i>.</li> <li>Made the following updates in <i>Software Available in the Download Center</i>: <ul style="list-style-type: none"> <li>Added Intel High Level Synthesis Compiler and Intel FPGA Power and Thermal Calculator to the software list.</li> <li>Included Agilex and Intel eASIC N5X devices.</li> <li>Added a note about discontinuation of older releases.</li> </ul> </li> <li>Removed the topic <i>Installing on Red Hat Enterprise 4 or Earlier Versions</i>.</li> <li>Changed the topic title <i>Installing on Red Hat Enterprise 5 and 6</i> to <i>Installing on Red Hat Enterprise Linux 6</i> since Red Hat Enterprise Linux 5 version is no longer supported.</li> <li>Modified description about the license entitlements and removed the mention of Intel FPGA SDK for OpenCL in the additional software list in <i>Licensing Intel FPGA Software</i>.</li> <li>Updated the HLS requirements in <i>Intel High Level Synthesis Compiler Software Requirements</i>.</li> <li>Added SUSE Linux Enterprise Server 12 to the list in <i>ModelSim - Intel FPGA Edition Software Requirements</i>.</li> <li>Updated the <code>\$QSYS_ROOTDIR</code> directory to <code>\${installdir}/qsys/bin</code> in <i>Intel Quartus Prime Environment Variables</i>.</li> <li>Removed Red Hat Linux Enterprise 5 in <i>ModelSim - Intel FPGA Edition Software Requirements</i> and <i>Software Requirements</i> topics.</li> <li>Added an entry for Windows in <i>Software Requirements</i>.</li> </ul>
2020.07.13	20.2	<ul style="list-style-type: none"> <li>Added a note about having multiple license versions running on a system in <i>Upgrading the FLEXlm License Manager Server Software</i>.</li> <li>Removed all occurrences of the <code>ALTERAD_LICENSE_FILE</code> environment variable since it is deprecated and should no longer be used.</li> </ul>
2020.06.22	20.2	<ul style="list-style-type: none"> <li>Updated the processor requirements in <i>Minimum Hardware Requirements</i>.</li> </ul>
<b>continued...</b>		



### C. Document Revision History for Intel FPGA Software Installation and Licensing

683472 | 2021.10.04

Document Version	Intel Quartus Prime Version	Changes
2020.04.13	20.1	<ul style="list-style-type: none"> <li>Added CPU requirements to <i>Minimum Hardware Requirements</i>.</li> <li>Removed a step about Akamai DLM3 in <i>Downloading Individual Executable Files</i> since it is no longer supported.</li> <li>Updated step 6 (which described download options) completely in <i>Downloading .tar Files</i>.</li> <li>Updated step 5 (which described download options) completely in <i>Adding Device Support and Other Intel FPGA Software to Existing Installation</i>.</li> <li>Updated step 5 (which described download options) completely in <i>Updating Intel FPGA Software</i>.</li> </ul>
2019.12.16	19.4	<ul style="list-style-type: none"> <li>Updated the <i>Upgrading the FLEXlm License Manager Server Software</i> topic completely.</li> <li>Corrected typo in <i>Installing Windows Subsystem for Linux (WSL) on Windows</i>.</li> <li>Minor correction in the title of <i>Installing Programming Cable Drivers</i>.</li> <li>Removed some repetitive topics under <i>Starting the Intel Quartus Prime Software</i>.</li> </ul>
2019.09.30	19.3	<ul style="list-style-type: none"> <li>Added "Checking the IP License Status" topic.</li> <li>Added footnote for Nios II EDS changes in <i>Software Available in the Download Center</i> and added cross-reference links. Added the same information in <i>Nios II Embedded Design Suite License</i> topic.</li> <li>In <i>Environment Variables</i> topic, added <code>PATH</code> variable section and moved text related to <code>\$QSYS_ROOTDIR</code> beneath this section.</li> <li>Updated a note in <i>FEATURE and INCREMENT lines</i> about mixed language support.</li> <li>In <i>Upgrading the FLEXlm License Manager Server Software</i> topic, added a link to the License Daemon Downloads page and updated the FLEXlm software version to 11.16.1.0.</li> <li>Added a new topic <i>Installing Windows Subsystem for Linux (WSL) on Windows</i>.</li> </ul>
2019.06.27	19.1	<ul style="list-style-type: none"> <li>Removed the topic <i>Set Up a Floating Network License on a Local Computer</i> since it was outdated.</li> <li>Renamed "Mentor Graphics* Verification IP (VIP) Altera Edition" to "Mentor Graphics AXI Verification IP Suite (Intel FPGA Edition)".</li> <li>In <i>License File Header</i> topic, updated the license header sample to remove references to Altera.</li> <li>In <i>Obtain Necessary Hardware Information</i>, added Linux OS support for fixed licenses.</li> <li>Added footnote about Remote Desktop limits to "Specifying the License for the ModelSim - Intel FPGA Edition Software."</li> </ul>
2019.04.01	19.1	<ul style="list-style-type: none"> <li>In <i>Intel Quartus Prime Environment Variables</i>, added <code>LC_ALL</code> variable to the list to explain the Perl warning observed if there is a mismatch in the locale setting.</li> <li>In <i>Software Available in the Download Center</i>, added footnote about RSA Data Security, Inc. MD5 Message-Digest Algorithm.</li> <li>In <i>Software Requirements</i> topic, updated RHEL, Ubuntu, and SUSE package details.</li> <li>Global changes: <ul style="list-style-type: none"> <li>Rebranded Altera URLs to Intel URLs.</li> <li>Rebranded myAltera to My Intel along with the related screenshots.</li> </ul> </li> </ul>
2018.09.24	18.1.0	<ul style="list-style-type: none"> <li>Added statement that the Intel Quartus Prime software installer does not support spaces in the installation path.</li> <li>Renamed <i>Installation Directory</i> topic to <i>Installation Path</i>.</li> </ul>
<b>continued...</b>		

## C. Document Revision History for Intel FPGA Software Installation and Licensing

683472 | 2021.10.04



Document Version	Intel Quartus Prime Version	Changes
2018.05.07	18.0.0	<ul style="list-style-type: none"> <li>Reorganized content.</li> <li>Moved content about getting hardware information to Appendix.</li> <li>Added how to install USB drivers for Red Hat Enterprise systems.</li> <li>Added software requirements for Intel High Level Synthesis (HLS) Compiler.</li> <li>Added information about specifying more than one licensing server.</li> <li>Removed references to automatic web license retrieval.</li> <li>Removed instructions to set environment variables on Linux and Windows.</li> <li>Created a Licensing Intel FPGA Software Walkthrough topic.</li> <li>Updated the supported Red Hat Linux version number (5, 6 and 7 instead of 5 and 6).</li> </ul>
2018.04.16	17.1.0	Updated licensing information for ModelSim - Intel FPGA Edition software
2017.11.06	17.1.0	<ul style="list-style-type: none"> <li>Fixed outdated links from topic: "Using the Self-Service Licensing Center"</li> <li>Added topics: "Installing Intel FPGA Software at the Command Prompt" and "Downloading and Installing Intel FPGA Software on Multiple Systems"</li> <li>Removed command-line information from "Additional Installation Procedures"</li> </ul>
2017.07.19	17.0.0	<ul style="list-style-type: none"> <li>Removed "How to Contact Us" topic</li> </ul>
2017.05.08	17.0.0	<ul style="list-style-type: none"> <li>Included new free licensing mode for Intel Quartus Prime Pro Edition software, which supports Intel Cyclone 10 GX devices only.</li> <li>Removed all references to Solaris, which is no longer supported.</li> <li>Added make as a required Linux library.</li> </ul>
2016.10.31	16.1.0	<ul style="list-style-type: none"> <li>Removed all references to Talkback feature.</li> <li>Changed instances of Altera to Intel FPGA.</li> </ul>
2016.05.02	16.0.0	Removed instructions on downloading .iso files, which are no longer supported.
2015.11.02	15.1.0	Updated to reflect the new Quartus Prime Lite, Standard, and Pro Edition software.
2015.05.04	15.0.0	<ul style="list-style-type: none"> <li>Reorganized the document.</li> <li>Added a quick start for fixed, single user licenses.</li> </ul>
2015.03.09	14.1.1	<ul style="list-style-type: none"> <li>Updated the supported Red Hat Linux version number (5 and 6 instead of 6 and 7)</li> <li>Changed recommended screen resolution from 768 x 1024 to 1024 x 768</li> </ul>
2014.12.15	14.1.0	<ul style="list-style-type: none"> <li>Updated RPM package prerequisite information for Red Hat Linux Enterprise 7 and ModelSim-Altera Edition software and SoC EDS on systems running Red Hat Linux Enterprise 7</li> <li>Added Microsoft redistributable package requirements for ModelSim-Altera Edition</li> <li>Updated FLEXlm license server version to 11.11.1</li> <li>Updated available software in the "Altera Software" topic</li> <li>Removed references to Windows XP and Windows Server 2003</li> <li>Updated terminology in the "Adding Floating Seats" topic</li> <li>Updated instructions for the "Setting Windows Environment Variables" topic</li> <li>Added a firewall example to the "Modifying the Network License File" topic</li> </ul>

*continued...*


**C. Document Revision History for Intel FPGA Software Installation and Licensing**

683472 | 2021.10.04

Document Version	Intel Quartus Prime Version	Changes
2014.18.08	14.0a10.0	<ul style="list-style-type: none"> <li>Updated RPM package prerequisite information for Red Hat Linux Enterprise 6 and ModelSim-Altera Edition software and SoC EDS on systems running Red Hat Linux Enterprise 6</li> </ul>
June, 2014	14.0.0	<ul style="list-style-type: none"> <li>Updated "Cables and Ports" topic.</li> <li>Updated "Upgrading or Setting Up a License Manager Server" topic.</li> <li>Updated "Quartus II General Environment Variables" topic.</li> <li>Updated "Download and Installation Prerequisites" topic.</li> <li>Removed references to 32-bit Quartus II software.</li> <li>Added "Downloading and Installing Altera Software Updates" topic.</li> <li>Updated "Rehosting a License" topic.</li> <li>Updated 32-bit libraries in "Download and Installation Prerequisites" topic.</li> <li>Updated "Modifying the Network License File" topic.</li> </ul>
Nov, 2013	13.1.0	<ul style="list-style-type: none"> <li>Added references to Altera SDK for OpenCL in "Altera Software" topic.</li> <li>Updated information about downloading .tar files in "Installation Options" topic.</li> <li>Removed note about installing software separately from "Installing Device Family Support" topic.</li> </ul>
May, 2013	13.0.0	<ul style="list-style-type: none"> <li>Removed references to the TCP/IP protocol in "More Download, Installation, and Setup Procedures" topic.</li> <li>Removed references to SOPC Builder in "Supported Software Subscriptions" topic.</li> <li>Removed the "Individual Software Files" topic, and "Using the 64-Bit Version of the Quartus II Software for Linux" topic.</li> <li>Updated Altera Complete Design Suite DVD information in "Altera Software" topic.</li> <li>Removed reference to Windows Vista in "Cables and Ports" topic.</li> <li>Updated downloading, installing, and uninstalling Altera software information in "Altera Download Center" topic.</li> <li>Updated information about installing the FLEXlm software in "Upgrading the FLEXlm License Manager Server Software" topic.</li> </ul>

## OUR CERTIFICATE

DiGi provide top-quality products and perfect service for customer worldwide through standardization, technological innovation and continuous improvement. DiGi through third-party certification, we stricly control the quality of products and services. Welcome your RFQ to

Email: [Info@DiGi-Electronics.com](mailto:Info@DiGi-Electronics.com)



Tel: +00 852-30501935

RFQ Email: [Info@DiGi-Electronics.com](mailto:Info@DiGi-Electronics.com)

DiGi is a global authorized distributor of electronic components.