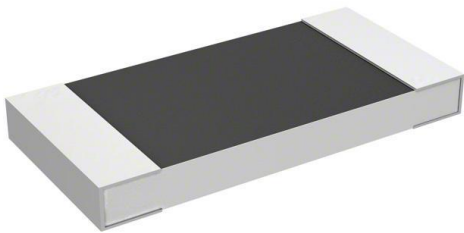


CRL2512-FW-R390ELF Datasheet

www.digi-electronics.com



CRL2512-FW-R390ELF

<https://www.DiGi-Electronics.com>

DiGi Electronics Part Number	CRL2512-FW-R390ELF-DG
Manufacturer	Bourns Inc.
Manufacturer Product Number	CRL2512-FW-R390ELF
Description	RES 0.39 OHM 1% 1W 2512
Detailed Description	390 mOhms ±1% 1W Chip Resistor 2512 (6432 Metric) Thick Film

This model CRL2512-FW-R390ELF is available at DiGi Electronics.

DiGi Electronics offers a global database of semiconductor and electronic component datasheets.

We welcome your inquiries regarding pricing, lead time, or other product-related questions.

 [Request a Quote](#)

 [Datasheet Search](#)



Tel: +00 852-30501935

RFQ Email: Info@DiGi-Electronics.com

DiGi is a global authorized distributor of electronic components.

Purchase and inquiry

Manufacturer Product Number:

CRL2512-FW-R390ELF

Series:

CRL

Resistance:

390 mOhms

Power (Watts):

1W

Features:

-

Operating Temperature:

-55°C ~ 125°C

Supplier Device Package:

2512

Height - Seated (Max):

0.028" (0.70mm)

Failure Rate:

-

Manufacturer:

Bourns Inc.

Product Status:

Active

Tolerance:

±1%

Composition:

Thick Film

Temperature Coefficient:

±200ppm/°C

Package / Case:

2512 (6432 Metric)

Size / Dimension:

0.248" L x 0.122" W (6.30mm x 3.10mm)

Number of Terminations:

2

Base Product Number:

CRL2512

Environmental & Export classification

RoHS Status:

ROHS3 Compliant

REACH Status:

REACH Unaffected

HTSUS:

8533.21.0030

Moisture Sensitivity Level (MSL):

1 (Unlimited)

ECCN:

EAR99

OUR CERTIFICATE

DiGi provide top-quality products and perfect service for customer worldwide through standardization, technological innovation and continuous improvement. DiGi through third-party certification, we stricly control the quality of products and services. Welcome your RFQ to

Email: Info@DiGi-Electronics.com



Tel: +00 852-30501935

RFQ Email: Info@DiGi-Electronics.com

DiGi is a global authorized distributor of electronic components.