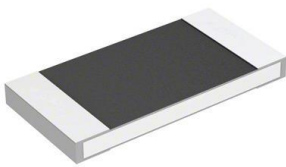


CRM2512-FX-75R0ELF Datasheet

www.digi-electronics.com



CRM2512-FX-75R0ELF

<https://www.DiGi-Electronics.com>

DiGi Electronics Part Number	CRM2512-FX-75R0ELF-DG
Manufacturer	Bourns Inc.
Manufacturer Product Number	CRM2512-FX-75R0ELF
Description	RES SMD 75 OHM 1% 2W 2512
Detailed Description	75 Ohms \pm 1% 2W Chip Resistor 2512 (6432 Metric) Current Sense Thick Film

This model CRM2512-FX-75R0ELF is available at DiGi Electronics.

DiGi Electronics offers a global database of semiconductor and electronic component datasheets.

We welcome your inquiries regarding pricing, lead time, or other product-related questions.

 [Request a Quote](#)

 [Datasheet Search](#)



Tel: +00 852-30501935

RFQ Email: Info@DiGi-Electronics.com

DiGi is a global authorized distributor of electronic components.

Purchase and inquiry

Manufacturer Product Number:

CRM2512-FX-75R0ELF

Series:

CRM2512

Resistance:

75 Ohms

Power (Watts):

2W

Features:

Current Sense

Operating Temperature:

-55°C ~ 155°C

Supplier Device Package:

2512

Height - Seated (Max):

0.031" (0.80mm)

Failure Rate:

-

Manufacturer:

Bourns Inc.

Product Status:

Active

Tolerance:

±1%

Composition:

Thick Film

Temperature Coefficient:

±100ppm/°C

Package / Case:

2512 (6432 Metric)

Size / Dimension:

0.248" L x 0.122" W (6.30mm x 3.10mm)

Number of Terminations:

2

Base Product Number:

CRM2512

Environmental & Export classification

RoHS Status:

ROHS3 Compliant

REACH Status:

REACH Unaffected

HTSUS:

8533.21.0030

Moisture Sensitivity Level (MSL):

1 (Unlimited)

ECCN:

EAR99

OUR CERTIFICATE

DiGi provide top-quality products and perfect service for customer worldwide through standardization, technological innovation and continuous improvement. DiGi through third-party certification, we stricly control the quality of products and services. Welcome your RFQ to

Email: Info@DiGi-Electronics.com



Tel: +00 852-30501935

RFQ Email: Info@DiGi-Electronics.com

DiGi is a global authorized distributor of electronic components.