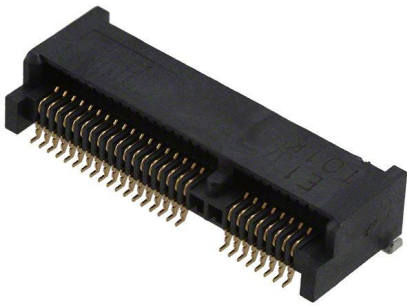


MM60-52C2-R1-R1200 Datasheet

www.digi-electronics.com



<https://www.DiGi-Electronics.com>

DiGi Electronics Part Number	MM60-52C2-R1-R1200-DG
Manufacturer	JAE Electronics
Manufacturer Product Number	MM60-52C2-R1-R1200
Description	CONN PCI EXP MIN FML 52POS 0.031
Detailed Description	52 Position Female Connector PCI Express Mini Card Gold 0.031" (0.80mm)

This model MM60-52C2-R1-R1200 is available at DiGi Electronics.

DiGi Electronics offers a global database of semiconductor and electronic component datasheets.

We welcome your inquiries regarding pricing, lead time, or other product-related questions.

 [Request a Quote](#)

 [Datasheet Search](#)



Tel: +00 852-30501935

RFQ Email: Info@DiGi-Electronics.com

DiGi is a global authorized distributor of electronic components.

Purchase and inquiry

Manufacturer Product Number:	MM60-52C2-R1-R1200	Manufacturer:	JAE Electronics
Series:	MM60	Product Status:	Obsolete
Card Type:	PCI Express Mini Card	Gender:	Female
Number of Positions/Bay/Row:	-	Number of Positions:	52
Card Thickness:	0.039" (1.00mm)	Number of Rows:	2
Pitch:	0.031" (0.80mm)	Read Out:	Dual
Features:	-	Mounting Type:	Surface Mount, Right Angle
Termination:	Solder	Contact Material:	Copper Alloy
Contact Finish:	Gold	Contact Finish Thickness:	3.94µin (0.10µm)
Contact Type:	-	Color:	-
Flange Feature:	-	Operating Temperature:	-40°C ~ 85°C
Material - Insulation:	Thermoplastic		

Environmental & Export classification

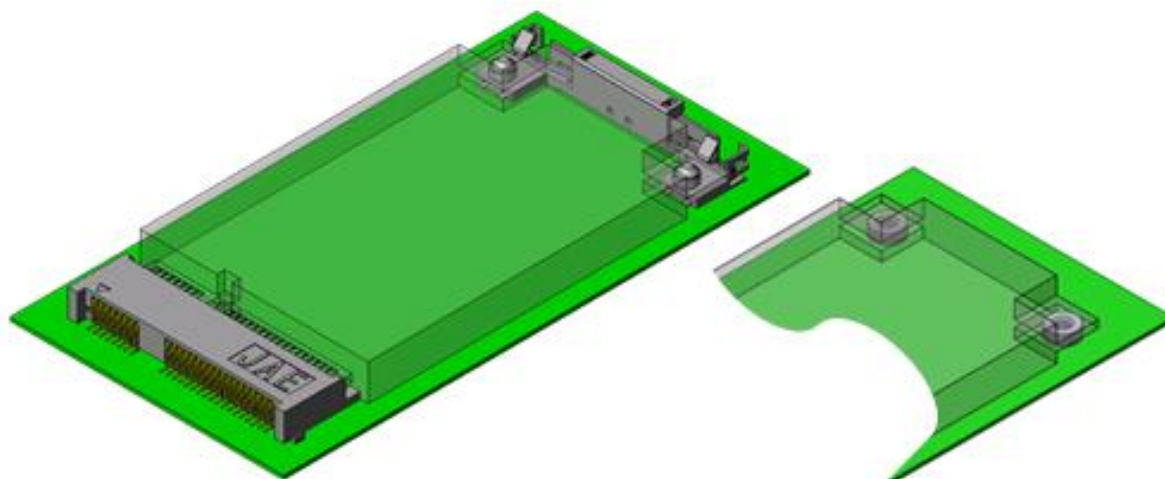
RoHS Status:	RoHS Compliant	Moisture Sensitivity Level (MSL):	1 (Unlimited)
ECCN:	EAR99	HTSUS:	8536.69.4040

Compatible With PCI Express Mini Card CONNECTOR

MM60 Series

MB-0147-7

Sep.2024

RoHS Compliant

The MM60 Series is a module socket compatible with the specifications defined by the PCI-SIG.

Application

notebook PCs, other devices

Features

- Compatible with the PCI Express Mini Card Electromechanical Specification and can be used for connecting with modules with PCI Express and USB communication.
- Retention latch part available to fix module to connector.
Latch has mechanisms on both sides for module ejection.
- Two types of module mounting heights are available.
Stand-off type allows components of under 1.8mm height to be placed below the module.
- Connector and latch are compatible with automatic mounting.
Embossed tape packaging.

General Specifications

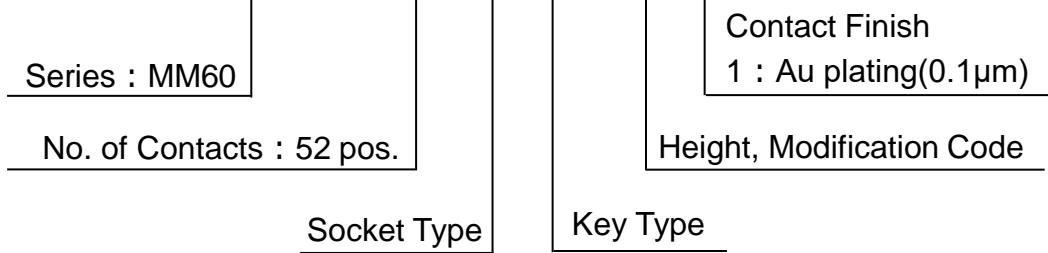
Number of Contacts	52 pos.
Contact Resistance	60mΩ max. (initial)
Dielectric Withstanding Voltage	AC300Vr.m.s. (per minute)
Durability	50 times
Operating Temperature Range	-40 deg. C to +85 deg. C
Rated Current	0.5A/pos.
Insertion Loss	-1dB min. (1.25GHz max.) / -5dB min.(3.75GHz max.)
Return Loss	-12dB max.(1.3GHz max.) / -7dB max.(2GHz max.) / -4dB(3.75GHz max.)
Crosstalk (Near End)	-32dB max.(1.25GHz max.) / -26dB max.(3.75GHz max.)

Materials and Finishes

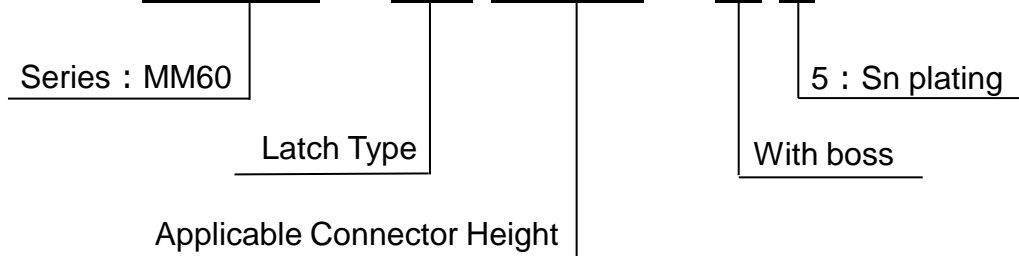
Component	Materials	Finishes
Connector		
Contact	Copper alloy	Au plating over Ni (contact area) Au flash plating over Ni (terminal area)
Insulator	Heat resistant material (UL94V-0)	
Hold down	Copper alloy	Sn plating
Latch		
Contact	Stainless steel	Sn plating
Insulator	Heat resistant material (UL94V-0)	
Nut		
Nut	Brass	Sn plating

Ordering Information

【Connector】

MM60 - 52 B 1 - E 1

【Latch】

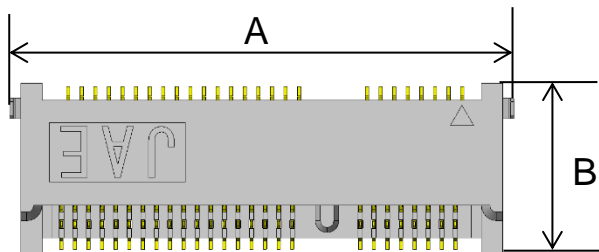
MM60 – EZ H059 – B 5

Combination

	Connector	Latch	Nut
Height 1	MM60-52B1-B1	MM60-EZH039-B5	NT1
	MM60-52B1-G1		
Height 2	MM60-52B1-E1	MM60-EZH059-B5	NT4

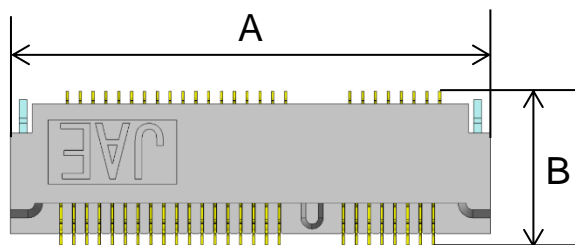
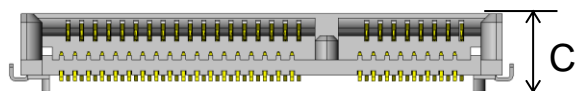
Outer Dimensions

【Connector】

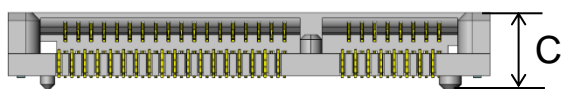


Unit : mm

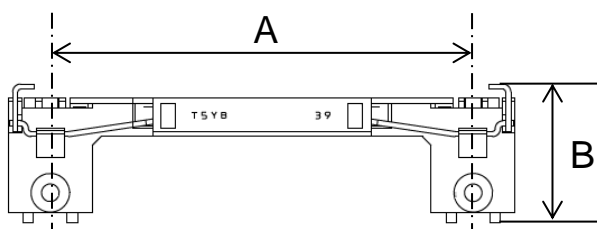
Part Number	A	B	C
MM60-52B1-B1	29.7	10.0	4.7
MM60-52B1-E1	29.7	10.0	6.7



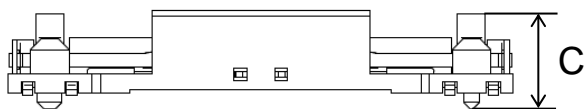
Part Number	A	B	C
MM60-52B1-G1	29.9	9.6	4.8



【Latch】

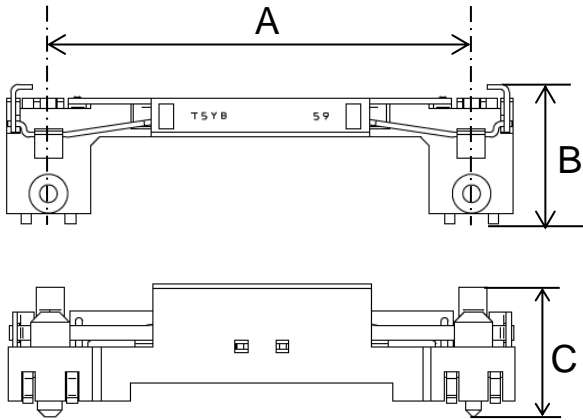


Product name	A	B	C
MM60-EZH039-B5	24.2	7.9	5.6



Outer Dimensions

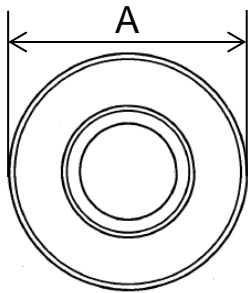
【Latch】



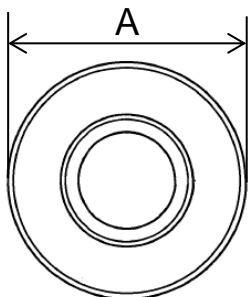
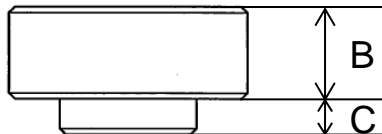
Unit : mm

Part Number	A	B	C
MM60-EZH059-B5	24.2	7.9	7.6

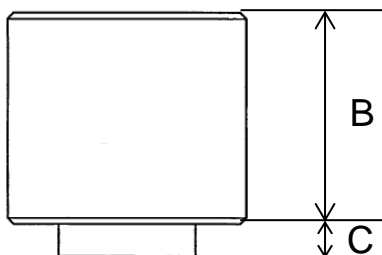
【Nut】



Part Number	A	B	C
NT1	$\Phi 4$	1.55	0.6



Part Number	A	B	C
NT4	$\Phi 4$	3.55	0.6



Part Numbers and Product Drawings

Part Number	Drawing Number	Specifications	Handling Instructions	
MM60-52B1-B1	SJ105215 (Individual Product)	JACS-10313	JAHL-10313	
MM60-52B1-B1-R850	SJ105216 (Reeled Product)			
MM60-52B1-E1	SJ105219 (Individual Product)			
MM60-52B1-E1-R650	SJ105220 (Reeled Product)			
MM60-52B1-G1	SJ110608 (Individual Product)	JACS-10706		
MM60-52B1-G1-R850	SJ110634 (Reeled Product)			
MM60-EZH039-B5	SJ105217 (Individual Product)	JACS-10313		
MM60-EZH039-B5-R850	SJ105218 (Reeled Product)			
MM60-EZH059-B5	SJ105221 (Individual Product)			
MM60-EZH059-B5-R650	SJ105222 (Reeled Product)			
NT1	SJ109548 (Individual Product)	-		-
NT1R3000	SJ109575 (Reeled Product)			
NT4	SJ110869 (Individual Product)	-	-	
NT4R1600	SJ110870 (Reeled Product)			

Notice:

1. The values specified in this brochure are only for reference. The products and their specifications are subject to change without notice. Contact our sales staff for further information before considering or ordering any of our products. For purchase, a product specification must be agreed upon.

2. Users are requested to provide protection circuits and redundancy circuits to ensure safety of the equipment, and sufficiently review the suitability of JAE's products to the equipment.

3. The products presented in this brochure are designed for the uses recommended below.

We strongly suggest you contact our sales staff when considering use of any of the products in any other way than the recommended applications or for a specific use that requires an extremely high reliability.

(1) Applications that require consultation:

(i) Please contact us if you are considering use involving a quality assurance program that you specify or that is peculiar to the industry, such as:

Automotive electrical components, train control, telecommunications devices (mainline), traffic light control, electric power, combustion control, fire prevention or security systems, disaster prevention equipment, etc.

(ii) We may separately give you our support with a quality assurance program that you specify, when you think of a use such as :

Aviation or space equipment, submarine repeaters, nuclear power control systems, medical equipment for life support, etc.

(2) Recommended applications include:

Computers, office appliances, telecommunications devices (terminals, mobile units), measuring equipment, audiovisual equipment, home electric appliances, factory automation equipment, etc.

Japan Aviation Electronics Industry, Limited

* The specifications in this brochure are subject to change without notice. Please contact JAE for information.

OUR CERTIFICATE

DiGi provide top-quality products and perfect service for customer worldwide through standardization, technological innovation and continuous improvement. DiGi through third-party certification, we strictly control the quality of products and services. Welcome your RFQ to

Email: Info@DiGi-Electronics.com



Tel: +00 852-30501935

RFQ Email: Info@DiGi-Electronics.com

DiGi is a global authorized distributor of electronic components.