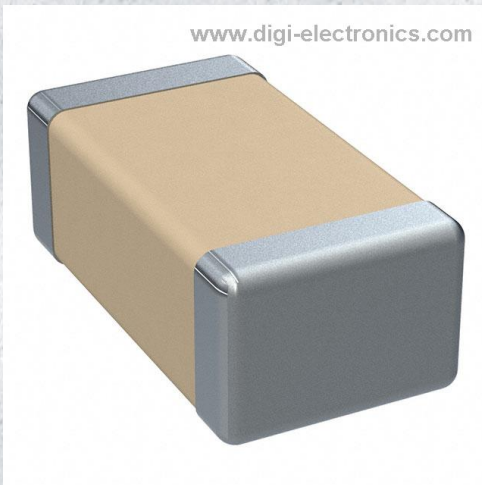


C0805X222GAGEC Datasheet



<https://www.DiGi-Electronics.com>

DiGi Electronics Part Number	C0805X222GAGEC-DG
Manufacturer	KEMET
Manufacturer Product Number	C0805X222GAGEC
Description	CAP CER 0805 2.2NF 250V COG 2%
Detailed Description	2200 pF ±2% 250V Ceramic Capacitor COG, NP0 0805 (2012 Metric)

This model C0805X222GAGEC is available at DiGi Electronics.

DiGi Electronics offers a global database of semiconductor and electronic component datasheets.

We welcome your inquiries regarding pricing, lead time, or other product-related questions.

 [Request a Quote](#)

 [Datasheet Search](#)



Tel: +00 852-30501935

RFQ Email: Info@DiGi-Electronics.com

DiGi is a global authorized distributor of electronic components.

Purchase and inquiry

Manufacturer Product Number:

C0805X222GAGEC

Series:

ESD SMD Comm COG

Capacitance:

2200 pF

Voltage - Rated:

250V

Operating Temperature:

-55°C ~ 125°C

Ratings:

-

Failure Rate:

-

Package / Case:

0805 (2012 Metric)

Height - Seated (Max):

-

Lead Spacing:

-

Base Product Number:

C0805X

Manufacturer:

KEMET

Product Status:

Active

Tolerance:

±2%

Temperature Coefficient:

COG, NP0

Features:

Low ESL, Soft Termination

Applications:

Boardflex Sensitive, ESD Protection

Mounting Type:

Surface Mount, MLCC

Size / Dimension:

0.079" L x 0.049" W (2.00mm x 1.25mm)

Thickness (Max):

0.039" (0.98mm)

Lead Style:

-

Environmental & Export classification

RoHS Status:

ROHS3 Compliant

REACH Status:

REACH Unaffected

HTSUS:

8532.24.0020

Moisture Sensitivity Level (MSL):

1 (Unlimited)

ECCN:

EAR99

OUR CERTIFICATE

DiGi provide top-quality products and perfect service for customer worldwide through standardization, technological innovation and continuous improvement. DiGi through third-party certification, we stricly control the quality of products and services. Welcome your RFQ to

Email: Info@DiGi-Electronics.com



Tel: +00 852-30501935

RFQ Email: Info@DiGi-Electronics.com

DiGi is a global authorized distributor of electronic components.