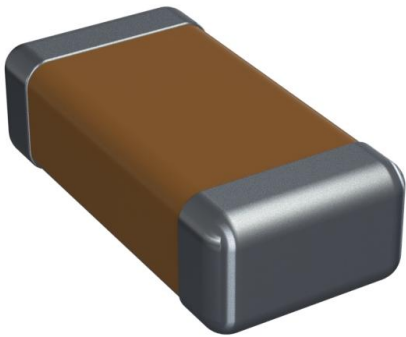


# KGM31BCG2A681MT Datasheet

[www.digi-electronics.com](http://www.digi-electronics.com)



<https://www.DiGi-Electronics.com>

DiGi Electronics Part Number	KGM31BCG2A681MT-DG
Manufacturer	<a href="#">KYOCERA AVX</a>
Manufacturer Product Number	KGM31BCG2A681MT
Description	CAP CER 680PF 100V COG/NP0 1206
Detailed Description	680 pF ±20% 100V Ceramic Capacitor COG, NP0 1206 (3216 Metric)

This model KGM31BCG2A681MT is available at DiGi Electronics.

DiGi Electronics offers a global database of semiconductor and electronic component datasheets.

We welcome your inquiries regarding pricing, lead time, or other product-related questions.

 [Request a Quote](#)

 [Datasheet Search](#)



Tel: +00 852-30501935

RFQ Email: [Info@DiGi-Electronics.com](mailto:Info@DiGi-Electronics.com)

DiGi is a global authorized distributor of electronic components.

## Purchase and inquiry

Manufacturer Product Number:

KGM31BCG2A681MT

Series:

KGM - COG

Capacitance:

680 pF

Voltage - Rated:

100V

Operating Temperature:

-55°C ~ 125°C

Ratings:

-

Failure Rate:

-

Package / Case:

1206 (3216 Metric)

Height - Seated (Max):

-

Lead Spacing:

-

Manufacturer:

KYOCERA AVX

Product Status:

Active

Tolerance:

±20%

Temperature Coefficient:

COG, NPO

Features:

-

Applications:

General Purpose

Mounting Type:

Surface Mount, MLCC

Size / Dimension:

0.126" L x 0.063" W (3.20mm x 1.60mm)

Thickness (Max):

0.037" (0.94mm)

Lead Style:

-

## Environmental & Export classification

RoHS Status:

ROHS3 Compliant

REACH Status:

REACH Unaffected

HTSUS:

8532.24.0020

Moisture Sensitivity Level (MSL):

1 (Unlimited)

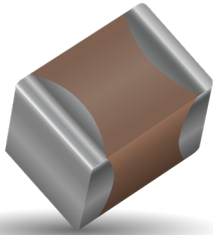
ECCN:

EAR99



# COG (NP0) Dielectric, KGM Series

## General Specifications



COG (NP0) is the most popular formulation of the “temperature-compensating,” EIA Class I ceramic materials. Modern COG (NP0) formulations contain neodymium, samarium and other rare earth oxides.

COG (NP0) ceramics offer one of the most stable capacitor dielectrics available. Capacitance change with temperature is  $0 \pm 30\text{ppm}/^\circ\text{C}$  which is less than  $\pm 0.3\%$  C from  $-55^\circ\text{C}$  to  $+125^\circ\text{C}$ . Capacitance drift or hysteresis for COG (NP0) ceramics is negligible at less than  $\pm 0.05\%$  versus up to  $\pm 2\%$  for films. Typical capacitance change with life is less than  $\pm 0.1\%$  for COG (NP0), one-fifth that shown by most other dielectrics.

### HOW TO ORDER

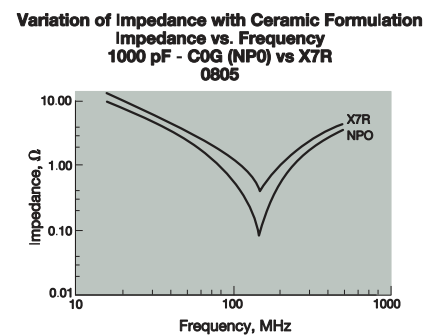
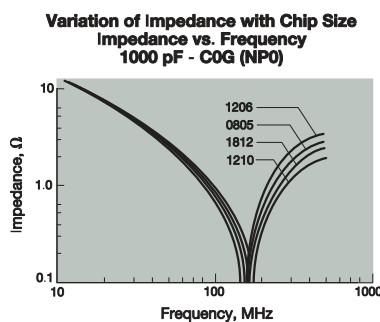
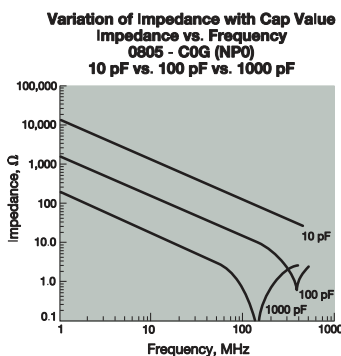
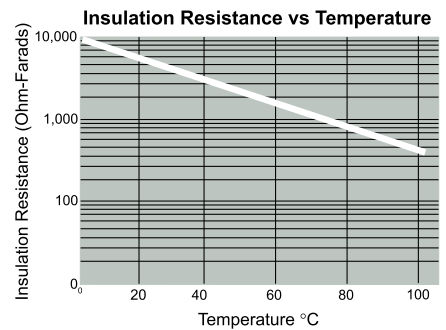
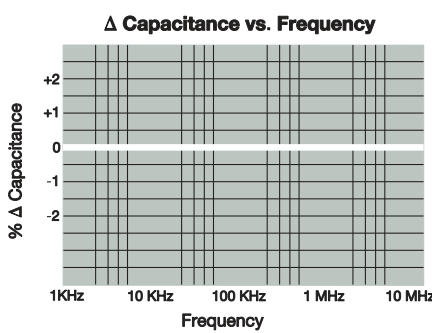
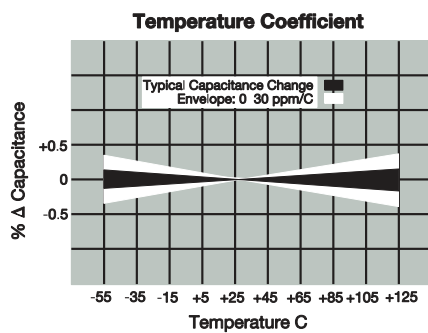
<b>KGM</b>	<b>21</b>	<b>A</b>	<b>CG</b>	<b>2J</b>	<b>102</b>	<b>F</b>	<b>L</b>
General Purpose Tin/Nickel Finish	Size	See Cap Chart	CG = COG	Voltage	Capacitance Code Code (in pF)	Capacitance Tolerance	See Table Below
	02 = 0101    32 = 1210 03 = 0201    43 = 1812 05 = 0402    44 = 1825 15 = 0603    55 = 2220 21 = 0805    56 = 2225 31 = 1206			0G = 4.0V    1H = 50V 0J = 6.3V    2A = 100V 1A = 10V    2D = 200V 1C = 16V    2E = 250V 1E = 25V    2H = 500V	2 Significant Digits +Number of zeros eg. 10 $\mu\text{F}$ = 106 10nF = 103 47pF = 470	B = $\pm 10\text{pF}$ (<10pF)* C = $\pm 25\text{pF}$ (<10pF)* D = $\pm 50\text{pF}$ (<10pF)* F = $\pm 1\%$ ( $\geq 10\text{pF}$ )* G = $\pm 2\%$ ( $\geq 10\text{pF}$ )* J = $\pm 5\%$ ( $\geq 10\text{pF}$ )* K = $\pm 10\%$ ( $\geq 10\text{pF}$ )* M = $\pm 20\%$	



### PACKAGING CODES

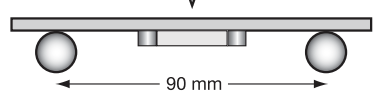
Code	EIA (inch)	IEC(mm)	7" Paper	7" Embossed	13" Paper	13" Embossed
02	0101	0402	H		n/a	
03	0201	0603	H		N	
05	0402	1005	H		N	
15	0603	1608	T		M	
21	0805	2012	T	U	M	L
31	1206	3216	T	U	M	L
32	1210	3225		U		L
43	1812	4532		V		S
44	1825	4564		V		S
55	2220	5750		V		S
56	2225	5763		V		S

\*thickness determines paper or plastic embossed packaging



# COG (NP0) Dielectric, KGM Series

## Specifications and Test Methods

Parameter/Test		NP0 Specification Limits	Measuring Conditions	
Operating Temperature Range		-55°C to +125°C	Temperature Cycle Chamber	
Capacitance		Within specified tolerance	Freq.: 1.0 MHz $\pm$ 10% for cap $\leq$ 1000 pF 1.0 kHz $\pm$ 10% for cap $>$ 1000 pF Voltage: 1.0Vrms $\pm$ .2V	
Q		$<$ 30 pF: Q $\geq$ 400+20 x Cap Value $\geq$ 30 pF: Q $\geq$ 1000		
Insulation Resistance		10,000M $\Omega$ or 500M $\Omega$ - $\mu$ F, whichever is less	Charge device with rated voltage for 60 $\pm$ 5 secs @ room temp/humidity	
Dielectric Strength		No breakdown or visual defects	Charge device with 250% of rated voltage for 1-5 seconds, w/charge and discharge current limited to 50 mA (max) Note: Charge device with 150% of rated voltage for 500V devices.	
Resistance to Flexure Stresses	Appearance	No defects	Deflection: 2mm Test Time: 30 seconds 1mm/sec 	
	Capacitance Variation	$\pm$ 5% or $\pm$ .5 pF, whichever is greater		
	Q	Meets Initial Values (As Above)		
	Insulation Resistance	$\geq$ Initial Value x 0.3		
Solderability		$\geq$ 95% of each terminal should be covered with fresh solder	Dip device in eutectic solder at 230 $\pm$ 5°C for 5.0 $\pm$ 0.5 seconds	
Resistance to Solder Heat	Appearance	No defects, $<$ 25% leaching of either end terminal	Dip device in eutectic solder at 260°C for 60sec- onds. Store at room temperature for 24 $\pm$ 2 hours before measuring electrical properties.	
	Capacitance Variation	$\leq$ $\pm$ 2.5% or $\pm$ .25 pF, whichever is greater		
	Q	Meets Initial Values (As Above)		
	Insulation Resistance	Meets Initial Values (As Above)		
	Dielectric Strength	Meets Initial Values (As Above)		
Thermal Shock	Appearance	No visual defects	Step 1: -55°C $\pm$ 2°	30 $\pm$ 3 minutes
	Capacitance Variation	$\leq$ $\pm$ 2.5% or $\pm$ .25 pF, whichever is greater	Step 2: Room Temp	$\leq$ 3 minutes
	Q	Meets Initial Values (As Above)	Step 3: +125°C $\pm$ 2°	30 $\pm$ 3 minutes
	Insulation Resistance	Meets Initial Values (As Above)	Step 4: Room Temp	$\leq$ 3 minutes
	Dielectric Strength	Meets Initial Values (As Above)	Repeat for 5 cycles and measure after 24 hours at room temperature	
Load Life	Appearance	No visual defects	Charge device with twice rated voltage in test chamber set at 125°C $\pm$ 2°C for 1000 hours (+48, -0).  Remove from test chamber and stabilize at room temperature for 24 hours before measuring.	
	Capacitance Variation	$\leq$ $\pm$ 3.0% or $\pm$ .3 pF, whichever is greater		
	Q (C=Nominal Cap)	$\geq$ 30 pF: Q $\geq$ 350 $\geq$ 10 pF, $<$ 30 pF: Q $\geq$ 275 +5C/2 $<$ 10 pF: Q $\geq$ 200 +10C		
	Insulation Resistance	$\geq$ Initial Value x 0.3 (See Above)		
Load Humidity	Appearance	No visual defects	Store in a test chamber set at 85°C $\pm$ 2°C/ 85% $\pm$ 5% relative humidity for 1000 hours (+48, -0) with rated voltage applied.  Remove from chamber and stabilize at room temperature for 24 $\pm$ 2 hours before measuring.	
	Capacitance Variation	$\leq$ $\pm$ 5.0% or $\pm$ .5 pF, whichever is greater		
	Q	$\geq$ 30 pF: Q $\geq$ 350 $\geq$ 10 pF, $<$ 30 pF: Q $\geq$ 275 +5C/2 $<$ 10 pF: Q $\geq$ 200 +10C		
	Insulation Resistance	$\geq$ Initial Value x 0.3 (See Above)		
	Dielectric Strength	Meets Initial Values (As Above)		

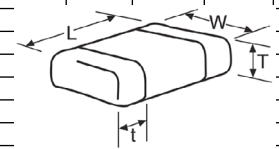




# COG (NP0) Dielectric, KGM Series

## Capacitance Range

SIZE		1210					1812					1825			2220			2225		
Soldering		Reflow Only					Reflow Only					Reflow Only			Reflow Only			Reflow Only		
Packaging		All Embossed					All Embossed					All Embossed			All Embossed			All Embossed		
(L) Length	mm	3.20 ± 0.20					4.50 ± 0.30					4.50 ± 0.30			5.70 ± 0.40			5.72 ± 0.25		
	(in.)	(0.126 ± 0.008)					(0.177 ± 0.012)					(0.177 ± 0.012)			(0.225 ± 0.016)			(0.225 ± 0.010)		
(W) Width	mm	2.50 ± 0.20					3.20 ± 0.20					6.40 ± 0.40			5.00 ± 0.40			6.35 ± 0.25		
	(in.)	(0.098 ± 0.008)					(0.126 ± 0.008)					(0.252 ± 0.016)			(0.197 ± 0.016)			(0.250 ± 0.010)		
(t) Terminal	mm	0.50 ± 0.25					0.61 ± 0.36					0.61 ± 0.36			0.64 ± 0.39			0.64 ± 0.39		
	(in.)	(0.020 ± 0.010)					(0.024 ± 0.014)					(0.024 ± 0.014)			(0.025 ± 0.015)			(0.025 ± 0.015)		
WVDC	WVDC	25	50	100	200	500	25	50	100	200	500	50	100	200	50	100	200	50	100	200
Cap 3.9																				
(pF) 4.7																				
5.6																				
6.8																				
8.2																				
10		E	E	E	E	E	B	B	B	B	B									
12		E	E	E	E	E	B	B	B	B	B									
15		E	E	E	E	E	B	B	B	B	B									
18		E	E	E	E	E	B	B	B	B	B									
22		E	E	E	E	E	B	B	B	B	B									
27		E	E	E	E	E	B	B	B	B	B									
33		E	E	E	E	E	B	B	B	B	B									
39		E	E	E	E	E	B	B	B	B	B									
47		E	E	E	E	E	B	B	B	B	B									
56		E	E	E	E	E	B	B	B	B	B									
68		E	E	E	E	E	B	B	B	B	B									
82		E	E	E	E	E	B	B	B	B	B									
100		E	E	E	E	E	B	B	B	B	B									
120		E	E	E	E	E	B	B	B	B	B									
150		E	E	E	E	E	B	B	B	B	B									
180		E	E	E	E	E	B	B	B	B	B									
220		E	E	E	E	E	B	B	B	B	B									
270		E	E	E	E	E	B	B	B	B	B									
330		E	E	E	E	E	B	B	B	B	B									
390		E	E	E	E	E	B	B	B	B	B									
470		E	E	E	E	E	B	B	B	B	B									
560		E	E	E	E	E	B	B	B	B	B									
680		E	E	E	E	E	B	B	B	B	B									
820		E	E	E	E	E	B	B	B	B	B									
1,000		E	E	E	E	E	B	B	B	B	B	C	C	C	Z	Z	Z	D	D	D
1200		E	E	E	E	E	B	B	B	B	B	C	C	C	Z	Z	Z	D	D	D
1500		E	E	E	E	E	B	B	B	B	B	C	C	C	Z	Z	Z	D	D	D
1800		E	E	E	E	E	B	B	B	B	B	C	C	C	Z	Z	Z	D	D	D
2200		E	E	E	E	E	B	B	B	B	B	C	C	C	Z	Z	Z	D	D	D
2700		E	E	E	E	E	B	B	B	B	B	C	C	C	Z	Z	Z	D	D	D
3300		E	E	E	E	E	B	B	B	B	B	C	C	C	Z	Z	Z	D	D	D
3900		E	E	E	E	E	B	B	B	B	B	C	C	C	Z	Z	Z	D	D	D
4700		E	E	E	H	H	B	B	B	B	B	C	C	C	Z	Z	Z	D	D	D
5600		E	E	E	H	H	B	B	B	B	B	C	C	C	Z	Z	Z	D	D	D
6800		E	E	E	H	H	B	B	B	B	B	C	C	C	Z	Z	Z	D	D	D
8200		E	E	E	H	H	B	B	B	B	B	C	C	C	Z	Z	Z	D	D	D
Cap 0.010		E	E	H	J	J	B	B	B	B	B	C	C	C	Z	Z	Z	D	D	D
(µF) 0.012		H	H	H	J	J	B	B	B	E	E	C	C	C	Z	Z	Z	D	D	D
0.015		H	H	J	L	L	B	B	B	E	E	C	C	C	Z	Z	Z	D	D	D
0.018		J	J	L	L		B	B	E	F	F	C	C	C	Z	Z	Z	D	D	D
0.022		J	J	L	L		B	B	E	F	F	C	C	C	Z	Z	Z	D	D	D
0.027		L	L	L	L		E	E	F	J		C	C	C	Z	Z	Z	D	D	D
0.033		L	L	L	L		E	E	F			C	C	C	Z	Z	Z	D	D	D
0.039		L	L	L			J	J	J			C	C	C	Z	Z	Z	D	D	D
0.047		L	L	L			J	J	J			C	C	C	Z	Z	C	D	D	D
0.068							J	J	J			C	C	F	Z	Z	C	D	D	G
0.082							J	J	J			C	F		Z	C		D	D	G
0.100							J	J	J			F	F		C	C		D	G	G
WVDC	WVDC	25	50	100	200	500	25	50	100	200	500	50	100	200	50	100	200	50	100	200
SIZE	SIZE	1210					1812					1825			2220			2225		



Case Size	1210 (KGM 32)					1812 (KGM 43)					1825 (KGM 44)		2220 (KGM 55)			2225 (KGM56)	
Thickness Letter	E	H	J	L		B	E	F	J	C	F	Z	C	D	G	E	G
Max Thickness (mm)	1.45	1.8	2.21	2.80		1.45	1.8	2.21	2.80	2.21	2.80	2.21	2.80	2.21	2.80	2.29	2.80
Carrier Tape	EMB	EMB	EMB	EMB		EMB	EMB	EMB	EMB	EMB	EMB	EMB	EMB	EMB	EMB	EMB	EMB
Packaging Code 7"reel	U	U	U	U		V	V	V	V	V	V	V	V	V	V	V	V
Packaging Code 13"reel	L	L	L	L		S	S	S	S	S	S	S	S	S	S	S	S
EMBOSS (EMB)																	

## OUR CERTIFICATE

DiGi provide top-quality products and perfect service for customer worldwide through standardization, technological innovation and continuous improvement. DiGi through third-party certification, we stricly control the quality of products and services. Welcome your RFQ to

Email: [Info@DiGi-Electronics.com](mailto:Info@DiGi-Electronics.com)



Tel: +00 852-30501935

RFQ Email: [Info@DiGi-Electronics.com](mailto:Info@DiGi-Electronics.com)

DiGi is a global authorized distributor of electronic components.