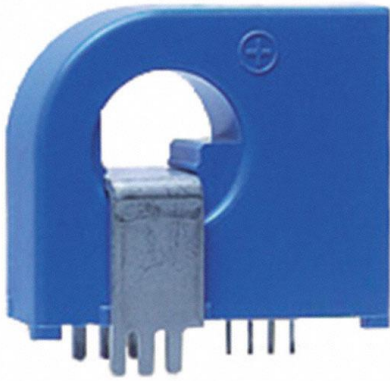


HTB 100-TP Datasheet

www.digi-electronics.com



<https://www.DiGi-Electronics.com>

DiGi Electronics Part Number	HTB 100-TP-DG
Manufacturer	LEM USA Inc.
Manufacturer Product Number	HTB 100-TP
Description	SENSOR CURRENT HALL 100A AC/DC
Detailed Description	Current Sensor 100A 1 Channel Hall Effect, Open Loop Bidirectional Module, Single Pass Through

This model HTB 100-TP is available at DiGi Electronics.

DiGi Electronics offers a global database of semiconductor and electronic component datasheets.

We welcome your inquiries regarding pricing, lead time, or other product-related questions.

 [Request a Quote](#)

 [Datasheet Search](#)



Tel: +00 852-30501935

RFQ Email: Info@DiGi-Electronics.com

DiGi is a global authorized distributor of electronic components.

Purchase and inquiry

Manufacturer Product Number:

HTB 100-TP

Series:

HTB

For Measuring:

AC/DC

Current - Sensing:

100A

Output:

Ratiometric, Voltage

Frequency:

DC ~ 50kHz

Accuracy:

±1%

Response Time:

3μs

Operating Temperature:

-40°C ~ 80°C

Mounting Type:

Through Hole

Supplier Device Package:

-

Manufacturer:

LEM USA Inc.

Product Status:

Active

Sensor Type:

Hall Effect, Open Loop

Number of Channels:

1

Sensitivity:

-

Linearity:

±1%

Voltage - Supply:

±12V ~ 15V

Current - Supply (Max):

15mA

Polarization:

Bidirectional

Package / Case:

Module, Single Pass Through

Environmental & Export classification

RoHS Status:

RoHS Compliant

REACH Status:

REACH Unaffected

HTSUS:

9030.33.3800

Moisture Sensitivity Level (MSL):

Not Applicable

ECCN:

EAR99

OUR CERTIFICATE

DiGi provide top-quality products and perfect service for customer worldwide through standardization, technological innovation and continuous improvement. DiGi through third-party certification, we stricly control the quality of products and services. Welcome your RFQ to

Email: Info@DiGi-Electronics.com



Tel: +00 852-30501935

RFQ Email: Info@DiGi-Electronics.com

DiGi is a global authorized distributor of electronic components.