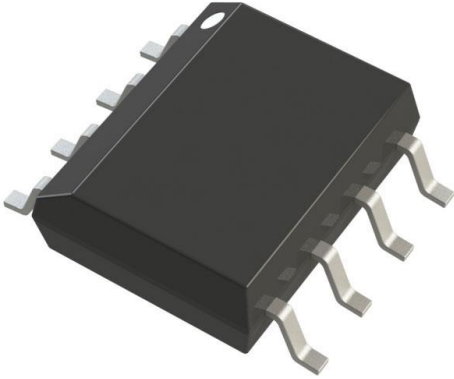


# AD8479TRZ-EP-R7 Datasheet

[www.digi-electronics.com](http://www.digi-electronics.com)



<https://www.DiGi-Electronics.com>

DiGi Electronics Part Number	AD8479TRZ-EP-R7-DG
Manufacturer	<a href="#">Analog Devices Inc.</a>
Manufacturer Product Number	AD8479TRZ-EP-R7
Description	IC OPAMP GP 1 CIRCUIT 8SOIC
Detailed Description	General Purpose Amplifier 1 Circuit Rail-to-Rail 8-SOIC



Tel: +00 852-30501935

RFQ Email: [Info@DiGi-Electronics.com](mailto:Info@DiGi-Electronics.com)

DiGi is a global authorized distributor of electronic components.

## Purchase and inquiry

Manufacturer Product Number:

AD8479TRZ-EP-R7

Series:

-

Amplifier Type:

General Purpose

Output Type:

Rail-to-Rail

-3db Bandwidth:

130 kHz

Current - Supply:

550µA

Operating Temperature:

-55°C ~ 125°C

Package / Case:

8-SOIC (0.154", 3.90mm Width)

Base Product Number:

AD8479

Manufacturer:

Analog Devices Inc.

Product Status:

Active

Number of Circuits:

1

Slew Rate:

9V/µs

Voltage - Input Offset:

500 µV

Current - Output / Channel:

55 mA

Mounting Type:

Surface Mount

Supplier Device Package:

8-SOIC

## Environmental & Export classification

RoHS Status:

ROHS3 Compliant

REACH Status:

REACH Unaffected

HTSUS:

8542.33.0001

Moisture Sensitivity Level (MSL):

3 (168 Hours)

ECCN:

EAR99





# Very High Common-Mode Voltage Precision Difference Amplifier

Enhanced Product

**AD8479-EP**

## FEATURES

- ±600 V dc common-mode voltage range
- Rail-to-rail output
- Fixed gain of 1
- Wide power supply operating voltage range of ±2.5 V to ±18 V
- 550  $\mu$ A typical power supply current
- Excellent ac specifications
  - 80 dB minimum CMRR
  - 130 kHz small signal –3 dB bandwidth
- High accuracy dc performance
  - 10 ppm maximum gain nonlinearity
  - 15  $\mu$ V/°C maximum offset voltage drift
  - 5 ppm/°C maximum gain drift

## ENHANCED PRODUCT FEATURES

- Supports defense and aerospace applications (AQEC standard)
- Military temperature range (–55°C to +125°C)
- Controlled manufacturing baseline
- One assembly/test site
- One fabrication site
- Product change notification
- Qualification data available on request

## APPLICATIONS

- Avionics
- Unmanned systems
- High voltage current sensing
- Motor controls
- Isolation

## GENERAL DESCRIPTION

The AD8479-EP is a difference amplifier with a very high input common-mode voltage ( $V_{CM}$ ) range. The AD8479-EP is a precision device that allows the user to accurately measure differential signals in the presence of high  $V_{CM}$  up to  $\pm 600$  V dc.

The AD8479-EP can replace costly isolation amplifiers in applications that do not require galvanic isolation. The device operates over a  $\pm 600$  V dc  $V_{CM}$  range and has inputs that are protected from common-mode or differential mode transients up to  $\pm 600$  V.

The AD8479-EP has low offset voltage, low offset voltage drift, low gain drift, low common-mode rejection drift, and excellent common-mode rejection ratio (CMRR) over a wide frequency range.

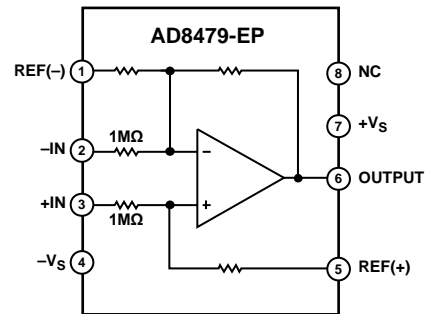
The AD8479-EP is available in a space-saving 8-lead SOIC package and is operational over the –55°C to +125°C temperature range.

Rev. 0

[Document Feedback](#)

Information furnished by Analog Devices is believed to be accurate and reliable. However, no responsibility is assumed by Analog Devices for its use, nor for any infringements of patents or other rights of third parties that may result from its use. Specifications subject to change without notice. No license is granted by implication or otherwise under any patent or patent rights of Analog Devices. Trademarks and registered trademarks are the property of their respective owners.

## FUNCTIONAL BLOCK DIAGRAM



NOTES  
1. NC = NO CONNECT. DO NOT CONNECT TO THIS PIN.

20877-001

Figure 1.

Additional application and technical information can be found in the [AD8479](#) data sheet.

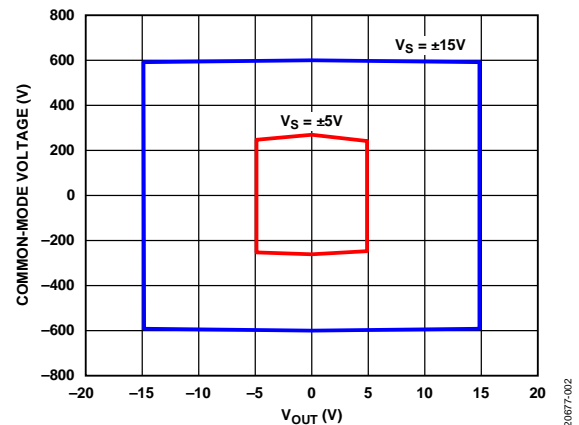


Figure 2. Input Common-Mode Voltage vs. Output Voltage ( $V_{out}$ )

20877-002

**TABLE OF CONTENTS**

Features .....	1	Absolute Maximum Ratings .....	4
Enhanced Product Features .....	1	ESD Caution.....	4
Applications.....	1	Pin Configuration and Function Descriptions.....	5
Functional Block Diagram .....	1	Typical Performance Characteristics .....	6
General Description .....	1	Outline Dimensions .....	7
Revision History .....	2	Ordering Guide .....	7
Specifications.....	3		

**REVISION HISTORY**

6/2019—Revision 0: Initial Version

Enhanced Product

AD8479-EP

## SPECIFICATIONS

Supply voltage ( $V_S$ ) =  $\pm 15$  V, REF(-) = REF(+) = 0 V, load resistor ( $R_L$ ) = 2 k $\Omega$ , and  $T_A$  = 25°C, unless otherwise noted.

Table 1.

Parameter	Test Conditions/Comments	Min	Typ	Max	Unit
<b>GAIN</b>					
Nominal Gain	$V_{OUT} = \pm 10$ V, $R_L = 2$ k $\Omega$		1		V/V
Gain Error			0.01	0.02	%
Gain Nonlinearity			4	10	ppm
Gain Drift	$T_A = T_{MIN}$ to $T_{MAX}$		3	5	ppm/°C
<b>OFFSET VOLTAGE</b>					
Offset Voltage	$V_S = \pm 15$ V		0.5	3	mV
	$V_S = \pm 5$ V		0.5	3	mV
Offset Voltage Drift	$T_A = T_{MIN}$ to $T_{MAX}$		3	15	$\mu$ V/°C
Power Supply Rejection Ratio (PSRR)	$V_S = \pm 2.5$ V to $\pm 15$ V	84	100		dB
<b>INPUT</b>					
Common-Mode Rejection Ratio (CMRR)	$V_{CM} = \pm 600$ V dc				
	$T_A = 25^\circ\text{C}$	80	90		dB
	$T_A = T_{MIN}$ to $T_{MAX}$	80			dB
	$V_{CM} = 1200$ V p-p, dc to 12 kHz	80			dB
Operating Voltage Range	Common-mode			$\pm 600$	V
	Differential			$\pm 14.7$	V
Input Operating Impedance	Common-mode		500		k $\Omega$
	Differential		2		M $\Omega$
<b>OUTPUT</b>					
Output Voltage Swing	$R_L = 2$ k $\Omega$	$-V_S + 0.3$		$+V_S - 0.3$	V
Output Short-Circuit Current			$\pm 55$		mA
Capacitive Load	Stable operation		500		pF
<b>DYNAMIC RESPONSE</b>					
Small Signal -3 dB Bandwidth			130		kHz
Slew Rate			9	9.3	V/ $\mu$ s
Full Power Bandwidth	$V_{OUT} = 20$ V p-p		100		kHz
Settling Time	0.01%, $V_{OUT} = 10$ V step		11		$\mu$ s
	0.001%, $V_{CM} = 10$ V step		15.4		$\mu$ s
<b>OUTPUT VOLTAGE NOISE</b>					
0.01 Hz to 10 Hz			30	35	$\mu$ V p-p
Noise Spectral Density	Frequency $\geq 100$ Hz		1.6		$\mu$ V/ $\sqrt{\text{Hz}}$
<b>POWER SUPPLY</b>					
Operating Voltage Range		$\pm 2.5$		$\pm 18$	V
Supply Current	$V_{OUT} = 0$ V		550	650	$\mu$ A
	$T_A = T_{MIN}$ to $T_{MAX}$		850		$\mu$ A
<b>TEMPERATURE</b>					
Operating Range ( $T_{MIN}$ to $T_{MAX}$ )		-55		+125	°C

## ABSOLUTE MAXIMUM RATINGS

Table 2.

Parameter	Rating
$V_S$	$\pm 18$ V
Input Voltage Range	
Continuous	$\pm 600$ V
Common-Mode and Differential, 10 sec	$\pm 900$ V
Output Short-Circuit Duration	Indefinite
REF(-) and REF(+)	$-V_S - 0.3$ V to $+V_S + 0.3$ V
Maximum Junction Temperature	150°C
Operating Temperature Range	-55°C to +125°C
Storage Temperature Range	-65°C to +150°C
Lead Temperature (Soldering, 60 sec)	300°C

Stresses at or above those listed under Absolute Maximum Ratings may cause permanent damage to the product. This is a stress rating only; functional operation of the product at these or any other conditions above those indicated in the operational section of this specification is not implied. Operation beyond the maximum operating conditions for extended periods may affect product reliability.

## THERMAL RESISTANCE

Thermal performance is directly linked to printed circuit board (PCB) design and operating environment. Careful attention to PCB thermal design is required.

$\theta_{JA}$  is the natural convection, junction to ambient thermal resistance measured in a one cubic foot sealed enclosure.

$\theta_{JC}$  is the junction to case thermal resistance.

Table 3. Thermal Resistance

Package Type	$\theta_{JA}$ <sup>1</sup>	$\theta_{JC}$ <sup>2</sup>	Unit
R-8	122	87	°C/W

<sup>1</sup> Thermal impedance simulated values are based on JEDEC 2S2P thermal test board. See JEDEC JESD-51.

<sup>2</sup> Thermal impedance simulated values are based on JEDEC 1S0P thermal test board. See JEDEC JESD51.

## ESD CAUTION



**ESD (electrostatic discharge) sensitive device.** Charged devices and circuit boards can discharge without detection. Although this product features patented or proprietary protection circuitry, damage may occur on devices subjected to high energy ESD. Therefore, proper ESD precautions should be taken to avoid performance degradation or loss of functionality.

Enhanced Product

AD8479-EP

## PIN CONFIGURATION AND FUNCTION DESCRIPTIONS



### NOTES

1. NC = NO CONNECT. DO NOT CONNECT TO THIS PIN.

20677-003

Figure 3. Pin Configuration

Table 4. Pin Function Descriptions

Pin No.	Mnemonic	Description
1	REF(-)	Negative Reference Voltage Input.
2	-IN	Inverting Input.
3	+IN	Noninverting Input.
4	-Vs	Negative Supply Voltage.
5	REF(+)	Positive Reference Voltage Input.
6	OUTPUT	Output.
7	+Vs	Positive Supply Voltage.
8	NC	No Connect. Do not connect to this pin.

TYPICAL PERFORMANCE CHARACTERISTICS

$V_S = \pm 15\text{ V}$ , unless otherwise noted.

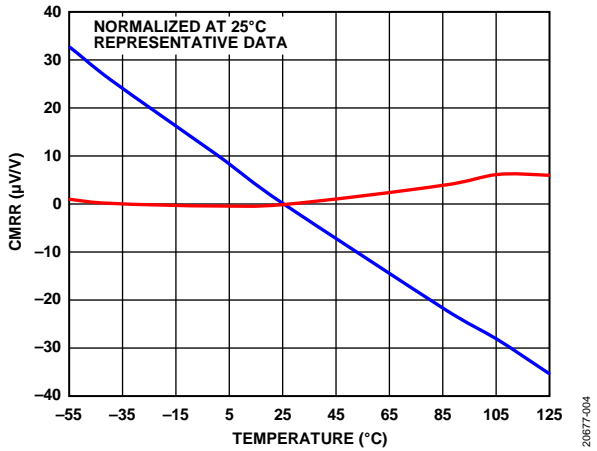


Figure 4. CMRR vs. Temperature,  $V_{CM} = \pm 20\text{ V}$

20677-004

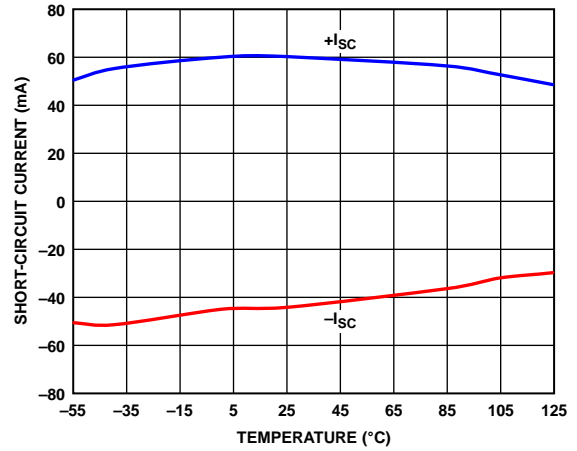


Figure 7. Short-Circuit Current ( $\pm I_{SC}$ ) vs. Temperature

20677-007

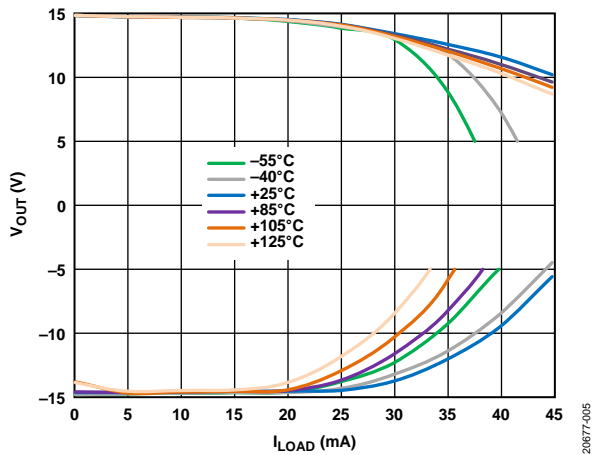


Figure 5.  $V_{OUT}$  vs. Output Current ( $I_{LOAD}$ ) at Various Temperatures

20677-005

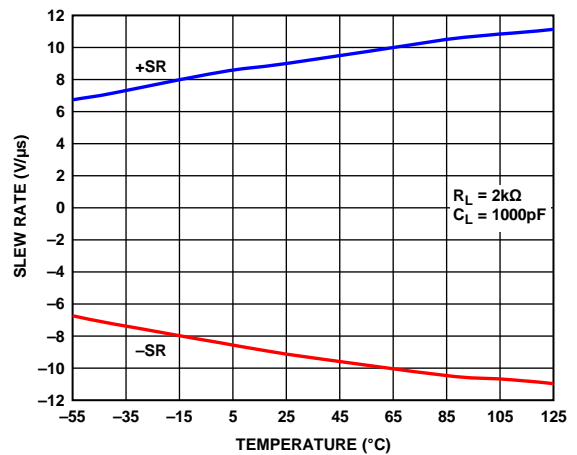


Figure 8. Slew Rate ( $\pm SR$ ) vs. Temperature

20677-008

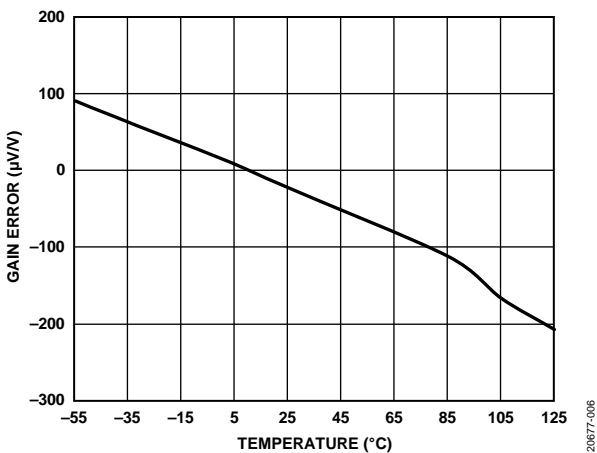


Figure 6. Gain Error vs. Temperature

20677-006

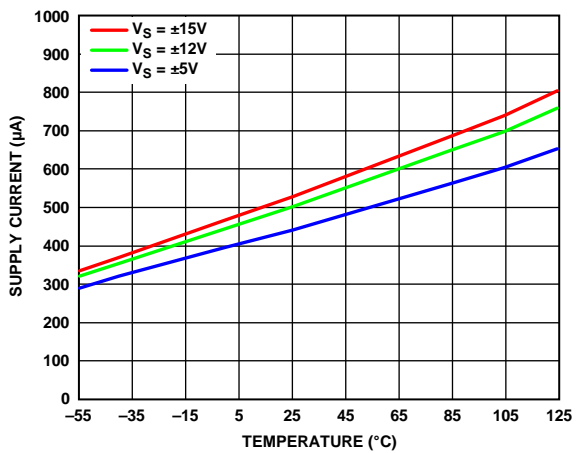


Figure 9. Supply Current vs. Temperature

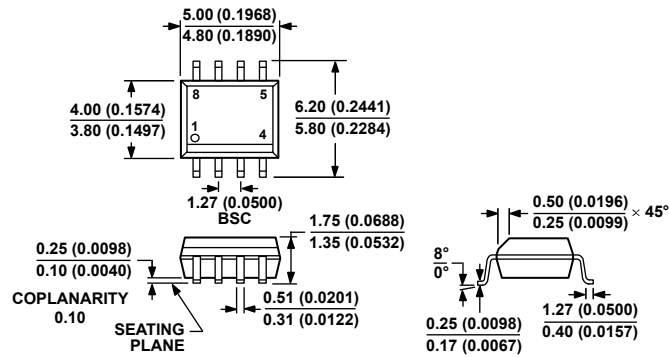
20677-009



Enhanced Product

AD8479-EP

## OUTLINE DIMENSIONS



COMPLIANT TO JEDEC STANDARDS MS-012-AA  
CONTROLLING DIMENSIONS ARE IN MILLIMETERS; INCH DIMENSIONS  
(IN PARENTHESES) ARE ROUNDED-OFF MILLIMETER EQUIVALENTS FOR  
REFERENCE ONLY AND ARE NOT APPROPRIATE FOR USE IN DESIGN.

Figure 10. 8-Lead Standard Small Outline Package [SOIC\_N]  
Narrow Body  
(R-8)

Dimensions shown in millimeters and (inches)

012407-A

## ORDERING GUIDE

Model <sup>1</sup>	Temperature Range	Package Description	Ordering Quantity	Package Option
AD8479TRZ-EP	-55°C to +125°C	8-Lead SOIC_N		R-8
AD8479TRZ-EP-R7	-55°C to +125°C	8-Lead SOIC_N, 7-Inch Tape and Reel	1000 pieces	R-8

<sup>1</sup> Z = RoHS Compliant Part.

## OUR CERTIFICATE

DiGi provide top-quality products and perfect service for customer worldwide through standardization, technological innovation and continuous improvement. DiGi through third-party certification, we stricly control the quality of products and services. Welcome your RFQ to

Email: [Info@DiGi-Electronics.com](mailto:Info@DiGi-Electronics.com)



Tel: +00 852-30501935

RFQ Email: [Info@DiGi-Electronics.com](mailto:Info@DiGi-Electronics.com)

DiGi is a global authorized distributor of electronic components.