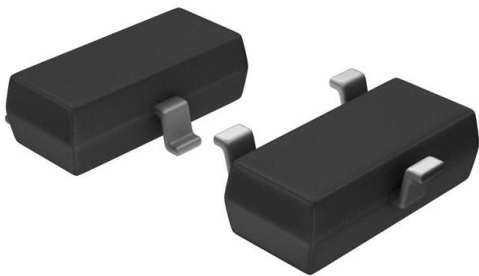


DS1813R-5+T&R Datasheet

www.digi-electronics.com



<https://www.DiGi-Electronics.com>

DiGi Electronics Part Number	DS1813R-5+T&R-DG
Manufacturer	Analog Devices Inc./Maxim Integrated
Manufacturer Product Number	DS1813R-5+T&R
Description	IC SUPERVISOR 1 CHANNEL SOT23-3
Detailed Description	Supervisor Open Drain or Open Collector 1 Channel SOT-23-3



Tel: +00 852-30501935

RFQ Email: Info@DiGi-Electronics.com

DiGi is a global authorized distributor of electronic components.

Purchase and inquiry

Manufacturer Product Number:

DS1813R-5+T&R

Series:

EconoReset

DiGi-Electronics Programmable:

Not Verified

Number of Voltages Monitored:

1

Output:

Open Drain or Open Collector

Reset Timeout:

100ms Minimum

Mounting Type:

Surface Mount

Supplier Device Package:

SOT-23-3

Manufacturer:

Analog Devices Inc./Maxim Integrated

Product Status:

Active

Type:

Simple Reset/Power-On Reset

Voltage - Threshold:

4.62V

Reset:

Active Low

Operating Temperature:

-40°C ~ 85°C (TA)

Package / Case:

TO-236-3, SC-59, SOT-23-3

Base Product Number:

DS1813

Environmental & Export classification

RoHS Status:

ROHS3 Compliant

REACH Status:

REACH Unaffected

HTSUS:

8542.39.0001

Moisture Sensitivity Level (MSL):

1 (Unlimited)

ECCN:

EAR99



DS1813 5V EconoReset with Pushbutton

www.maxim-ic.com

GENERAL DESCRIPTION

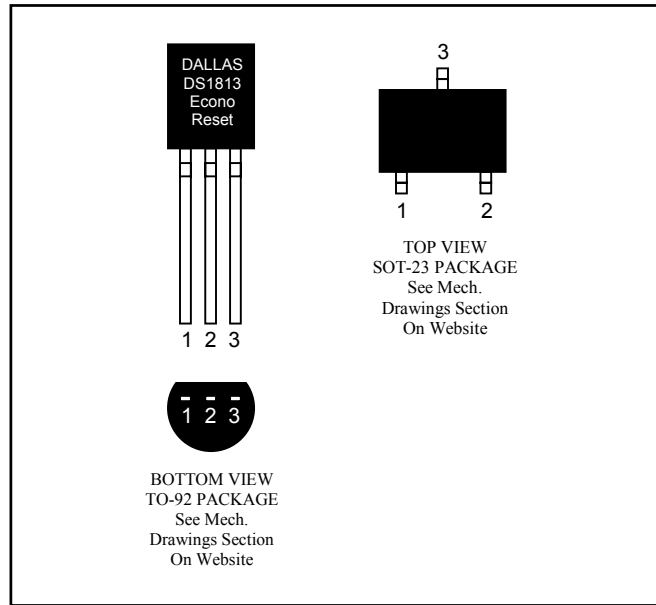
The DS1813 EconoReset uses a precision temperature reference and comparator circuit to monitor the status of the power supply (V_{CC}). When an out-of-tolerance condition is detected, an internal power-fail signal is generated which forces reset to the active state. When V_{CC} returns to an in-tolerance condition, the reset signal is kept in the active state for approximately 150ms to allow the power supply and processor to stabilize.

The DS1813 also monitors a pushbutton on the reset output. If the reset line is pulled low, a reset is generated upon release and will be held in reset output low for typically 150ms.

FEATURES

- Automatically Restarts a Microprocessor After Power Failure
- Monitors Pushbutton for External Override
- Maintains Reset for Typically 150ms After V_{CC} Returns to an In-Tolerance Condition
- Reduces Need for Discrete Components
- Precision Temperature-Compensated Voltage Reference and Voltage Sensor
- Low-Cost TO-92 or Space-Saving Surface-Mount SOT-23 Packages Available
- Efficient Open-Drain Output with Internal 5.5k Ω Pullup Resistor
- 40°C to +85°C Operating Temperature

PIN CONFIGURATIONS



PIN DESCRIPTION

PIN		NAME	FUNCTION
TO-92	SOT-23		
1	1	\overline{RST}	Active-Low Reset Output
2	2	V_{CC}	Power Supply
3	3	GND	Ground

OPERATION—POWER MONITOR

The DS1813 provides the functions of detecting out-of-tolerance power-supply conditions and warning a processor-based system of impending power failure. When V_{CC} is detected as out-of-tolerance, the \overline{RST} signal is asserted. On power-up, \overline{RST} is kept active for approximately 150ms after the power supply has reached the selected tolerance. This allows the power supply and microprocessor to stabilize before \overline{RST} is released.

OPERATION—PUSHBUTTON RESET

The DS1813 provides for a pushbutton switch for manual reset control. When the DS1813 is not in a reset cycle, a pushbutton reset can be generated by pulling the \overline{RST} pin low for at least $1\mu s$. When the pushbutton is held low, the \overline{RST} is forced active low and will remain active low for about 150ms after the pushbutton is released. See Figure 2 for an application example and Figure 3 for the timing diagram.

Figure 1. Block Diagram (Open-Drain Output)

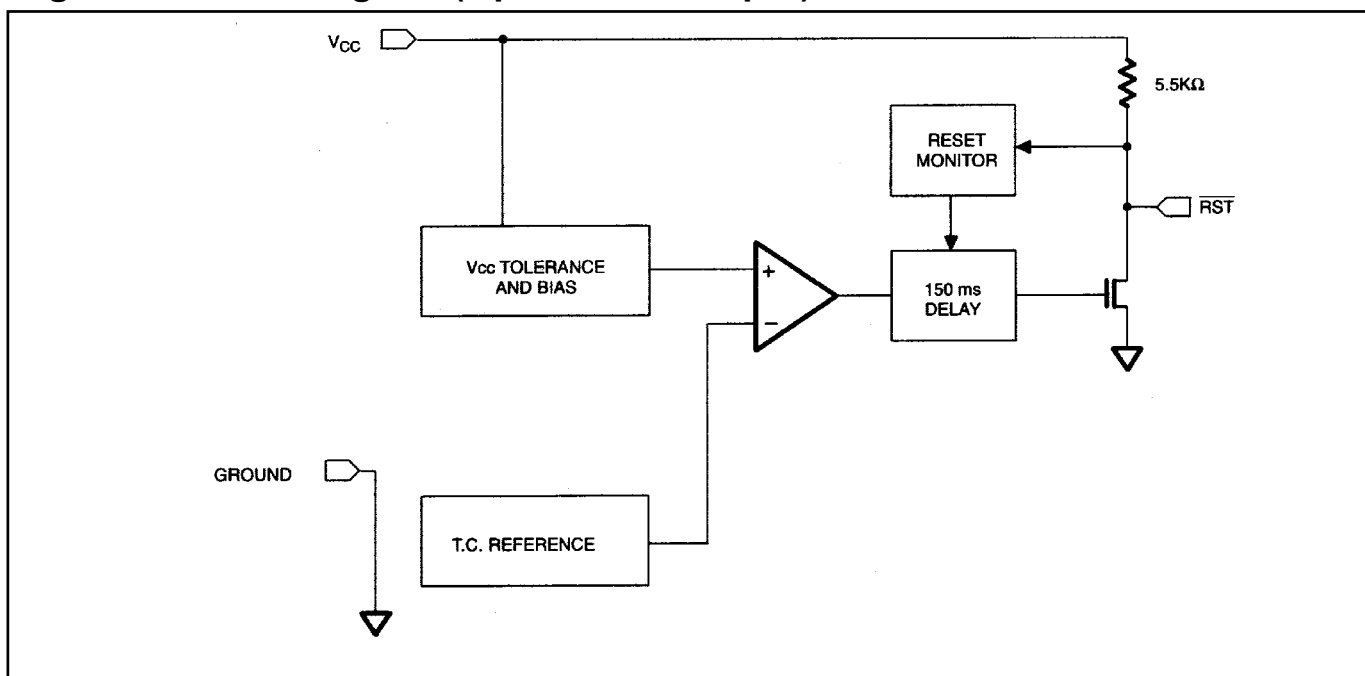


Figure 2. Application Example

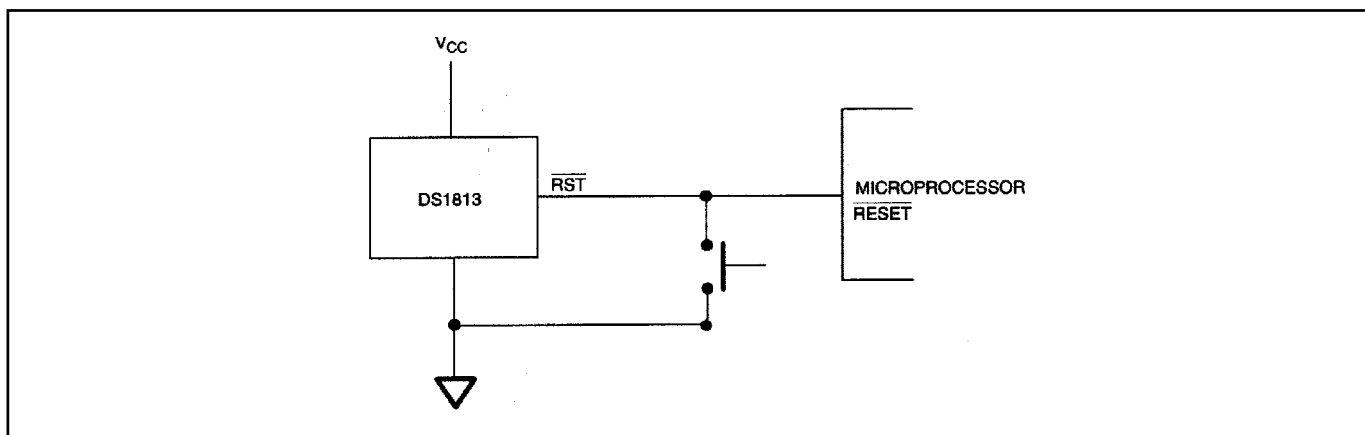
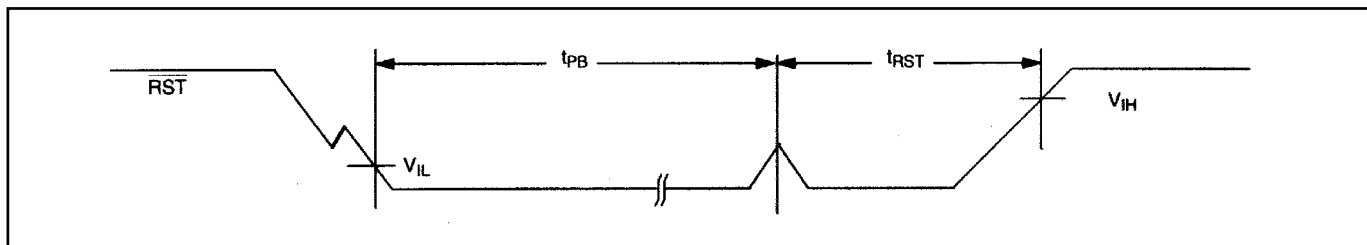
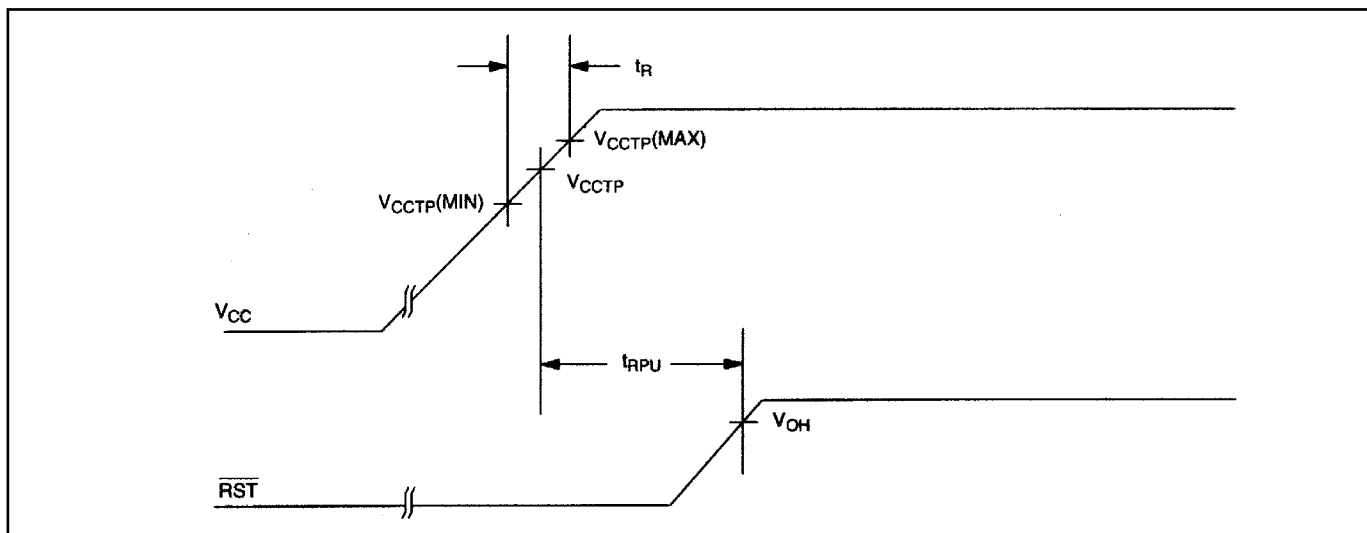
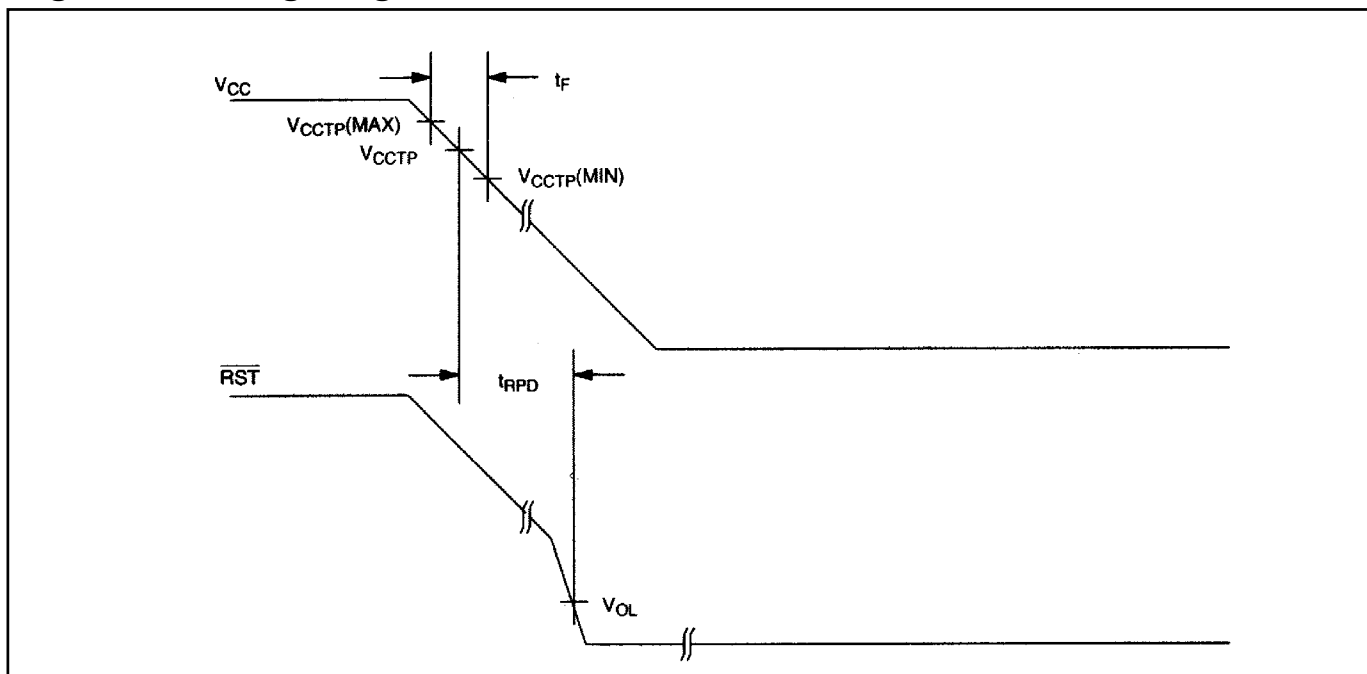


Figure 3. Timing Diagram: Pushbutton Reset**Figure 4. Timing Diagram: Power-Up****Figure 5. Timing Diagram: Power-Down**

ABSOLUTE MAXIMUM RATINGS

Voltage Range on V_{CC} Pin Relative to Ground.....	-0.5V to +7.0V
Voltage Range on \overline{RST} Relative to Ground.....	-0.5V to ($V_{CC} + 0.5V$)
Operating Temperature Range.....	-40°C to +85°C
Storage Temperature Range.....	-55°C to +125°C
Soldering Temperature.....	See IPC/JEDEC J-STD-020 Specification

This is a stress rating only and functional operation of the device at these or any other conditions above those indicated in the operation sections of this specification is not implied. Exposure to absolute maximum rating conditions for extended periods of time may affect reliability.

RECOMMENDED DC OPERATING CONDITIONS

($T_A = -40^\circ\text{C}$ to $+85^\circ\text{C}$)

PARAMETER	SYMBOL	MIN	TYP	MAX	UNITS	NOTES
Supply Voltage	V_{CC}	0		5.5	V	1

DC ELECTRICAL CHARACTERISTICS

($V_{CC} = 1.2V$ to $5.5V$, $T_A = -40^\circ\text{C}$ to $+85^\circ\text{C}$.)

PARAMETER	SYMBOL	MIN	TYP	MAX	UNITS	NOTES	
Output Current at 0.4V	I_{OL}	10			mA	2, 3	
Voltage Input Low	V_{IL}			0.4	V	1	
Voltage Input High	V_{IH}	0.7 x V_{CC}			V	1	
Operating Current $V_{CC} < 5.5$	I_{CC}		30	40	μA	4	
V_{CC} Trip Point	DS1813-5	V_{CCTP}	4.50	4.62	4.75	V	1
	DS1813-10		4.25	4.35	4.49		
	DS1813-15		4.00	4.13	4.24		
Internal Pullup Resistor	R_P	3.50	5.5	7.5	k Ω	6	
Output Capacitance	C_{OUT}			10	pF		

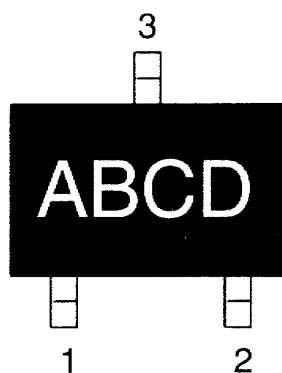
AC ELECTRICAL CHARACTERISTICS

($V_{CC} = 1.2V$ to $5.5V$, $T_A = -40^\circ\text{C}$ to $+85^\circ\text{C}$.)

PARAMETER	SYMBOL	MIN	TYP	MAX	UNITS	NOTES
Reset Active Time	t_{RST}	100	150	300	ms	
V_{CC} Detect to \overline{RST}	t_{RPD}		2	5	μs	
V_{CC} Slew Rate ($V_{CCTP(MAX)} - V_{CCTP(MIN)}$)	t_F	300			μs	7
V_{CC} Slew Rate ($V_{CCTP(MIN)} - V_{CCTP(MAX)}$)	t_R	0			ns	
V_{CC} Detect to \overline{RST}	t_{RPU}	100	150	300	ms	5
Pushbutton Detect to \overline{RST}	t_{PB}	1			μs	
Pushbutton Reset	t_{PBRST}	100	150	300	ms	

NOTES:

- 1) All voltages are referenced to ground.
- 2) Measured with $V_{CC} \geq 2.7V$.
- 3) A $1k\Omega$ external resistor may be required in some applications for proper operation of the microprocessor reset control circuit.
- 4) Measured with \overline{RST} output open.
- 5) $t_R = 5\mu s$.
- 6) V_{OH} and I_{OH} are a function of the value of R_P and the associated output load conditions.
- 7) This value is for reference in defining values for t_{RPD} and should not be considered a requirement for proper operation or use of the device.

PART MARKING CODES

“A,” “B,” and “C” represent the device type.

810 DS1810
 811 DS1811
 812 DS1812
 813 DS1813
 815 DS1815
 816 DS1816
 817 DS1817
 818 DS1818

“D” represents the device tolerance.

A 5%
 B 10%
 C 15%
 D 20%

OUR CERTIFICATE

DiGi provide top-quality products and perfect service for customer worldwide through standardization, technological innovation and continuous improvement. DiGi through third-party certification, we stricly control the quality of products and services. Welcome your RFQ to

Email: Info@DiGi-Electronics.com



Tel: +00 852-30501935

RFQ Email: Info@DiGi-Electronics.com

DiGi is a global authorized distributor of electronic components.