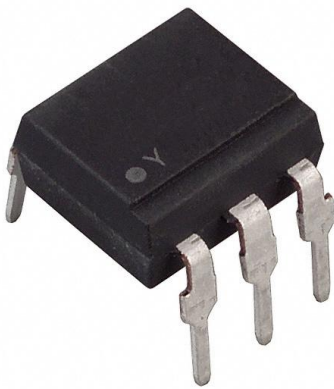


# CNY17-2 Datasheet

[www.digi-electronics.com](http://www.digi-electronics.com)



<https://www.DiGi-Electronics.com>

DiGi Electronics Part Number	CNY17-2-DG
Manufacturer	<a href="#">Lite-On Inc.</a>
Manufacturer Product Number	CNY17-2
Description	OPTOISO 5KV TRANS W/BASE 6DIP
Detailed Description	Optoisolator Transistor with Base Output 5000Vrms 1 Channel 6-DIP

This model CNY17-2 is available at DiGi Electronics.

DiGi Electronics offers a global database of semiconductor and electronic component datasheets.

We welcome your inquiries regarding pricing, lead time, or other product-related questions.

 [Request a Quote](#)

 [Datasheet Search](#)



Tel: +00 852-30501935

RFQ Email: [Info@DiGi-Electronics.com](mailto:Info@DiGi-Electronics.com)

DiGi is a global authorized distributor of electronic components.

## Purchase and inquiry

Manufacturer Product Number:

CNY17-2

Series:

CNY17

Number of Channels:

1

Current Transfer Ratio (Min):

63% @ 10mA

Turn On / Turn Off Time (Typ):

-

Input Type:

DC

Voltage - Output (Max):

70V

Voltage - Forward (Vf) (Typ):

1.45V

Vce Saturation (Max):

300mV

Mounting Type:

Through Hole

Supplier Device Package:

6-DIP

Manufacturer:

Lite-On Inc.

Product Status:

Active

Voltage - Isolation:

5000Vrms

Current Transfer Ratio (Max):

125% @ 10mA

Rise / Fall Time (Typ):

5µs, 5µs

Output Type:

Transistor with Base

Current - Output / Channel:

150mA

Current - DC Forward (If) (Max):

60 mA

Operating Temperature:

-55°C ~ 100°C

Package / Case:

6-DIP (0.300", 7.62mm)

Base Product Number:

CNY17

## Environmental & Export classification

RoHS Status:

ROHS3 Compliant

REACH Status:

REACH Unaffected

HTSUS:

8541.49.8000

Moisture Sensitivity Level (MSL):

1 (Unlimited)

ECCN:

EAR99



# Photocoupler

## Product Data Sheet

### CNY17-1 THRU CNY17-4 SERIES

Spec No.: DS-70-99-0001

Effective Date: 12/11/2015

Revision: C

**LITE-ON DCC**

**RELEASE**

BNS-OD-FC001/A4



# Photocouplers

## CNY17-1-V thru CNY17-4-V SERIES

### 1. DESCRIPTION

#### 1.1 Features

- Current transfer ratio (CTR : MIN. 40% at  $I_F = 10\text{mA}$ ,  $V_{CE} = 5\text{V}$ )
- High collector-emitter voltage  
 $V_{CEO} = 70\text{V}$
- High input-output isolation voltage  
 $V_{iso} = 5,000\text{Vrms}$
- Response time ( $t_r$  : TYP.  $5\mu\text{s}$  at  $V_{CE} = 10\text{V}$ ,  $I_C = 2\text{mA}$ ,  $R_L = 100\Omega$ )
- Dual-in-line package :  
CNY17-1-V, CNY17-2-V, CNY17-3-V, CNY17-4-V
- Wide lead spacing package :  
CNY17-1M-V, CNY17-2M-V, CNY17-3M-V, CNY17-4M-V
- Surface mounting package :  
CNY17-1S-V, CNY17-2S-V, CNY17-3S-V, CNY17-4S-V
- Tape and reel packaging :  
CNY17-1S-TA-V, CNY17-2S-TA-V, CNY17-3S-TA-V, CNY17-4S-TA-V  
CNY17-1S-TA1-V, CNY17-2S-TA1-V, CNY17-3S-TA1-V, CNY17-4S-TA1-V
- Safety approval  
\* UL approved (No. E113898)  
\* TUV approved (No. R9653630)  
\* CSA approved (No. CA91533-1)  
\* FIMKO approved ( No. 193422-01)  
\* VDE approved ( No. 40015248)  
\* BSI approved (No. 9018-9)  
\* CQC approved (No.CQC11001061921-2)
- Creepage distance > 8.0 mm ; Clearance > 8.0 mm
- The relevant models are the models Approved by VDE according to DIN EN 60747-5-5  
  
Approved Model No.: CNY17-1-V, CNY17-2-V, CNY17-3-V, CNY17-4-V  
CNY17-1M-V, CNY17-2M-V, CNY17-3M-V, CNY17-4M-V  
CNY17-1S-V, CNY17-2S-V, CNY17-3S-V, CNY17-4S-V  
CNY17-1S-TA-V, CNY17-2S-TA-V, CNY17-3S-TA-V, CNY17-4S-TA-V  
CNY17-1S-TA1-V, CNY17-2S-TA1-V, CNY17-3S-TA1-V, CNY17-4S-TA1-V  
  
VDE approved No.: 40015248 (According to the specification DIN EN 60747-5-5)
- Operating isolation voltage  $V_{IORM}$  : 850V (Peak)
- Transient voltage  $V_{TR}$  : 6000V (Peak)
- Pollution : 2 (According to VDE 0110-1 : 1997-04)
- Clearances distance (Between input and output) : 7.0mm (MIN.)
- Creepage distance (Between input and output) : 7.0mm (MIN.)
- Isolation thickness between input and output : 0.4mm (MIN.)



## Photocouplers


### CNY17-1-V thru CNY17-4-V SERIES

- Safety limit values Current (Isi) : 400mA (Diode side)

Power (Psi) : 700mW (Phototransistor side)

Temperature(Tsi) : 175°C

In order to keep safety electric isolation of photocoupler, please set the protective circuit to keep within safety limit values when the actual application equipment troubled.

- Indication of VDE approval prints "" on sleeve package.
- RoHS Compliance  
All materials be used in device are followed EU RoHS directive (No.2002/95/EC).
- ESD pass HBM 8000V/MM2000V
- MSL class1

#### 1.2 Applications

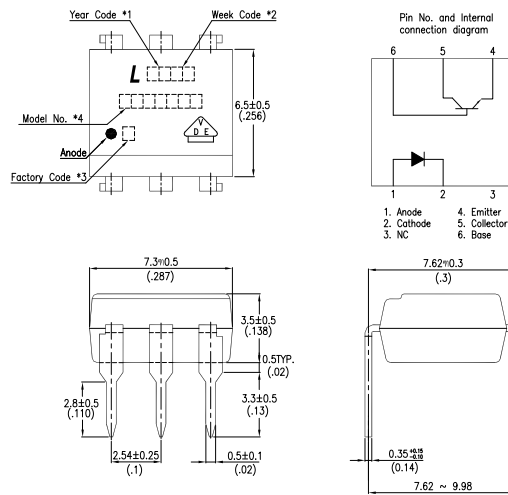
- Power Supply regulators
- Digital logic inputs
- Microprocessor inputs
- Appliance Sensor Systems
- Industrial Controls



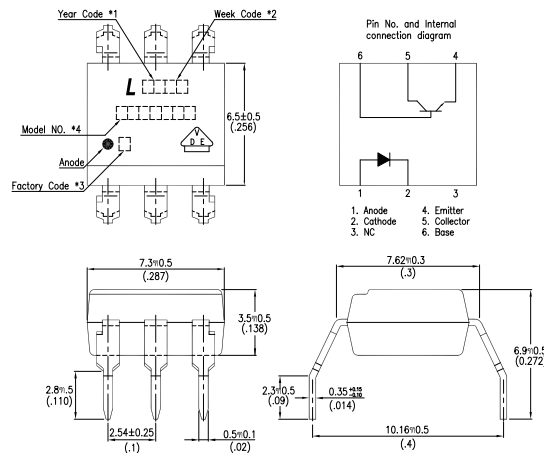
Photocouplers  
CNY17-1-V thru CNY17-4-V SERIES

2. PACKAGE DIMENSIONS

2.1 CNY17-1-V, CNY17-2-V, CNY17-3-V, CNY17-4-V :



2.2 CNY17-1M-V, CNY17-2M-V, CNY17-3M-V, CNY17-4M-V :



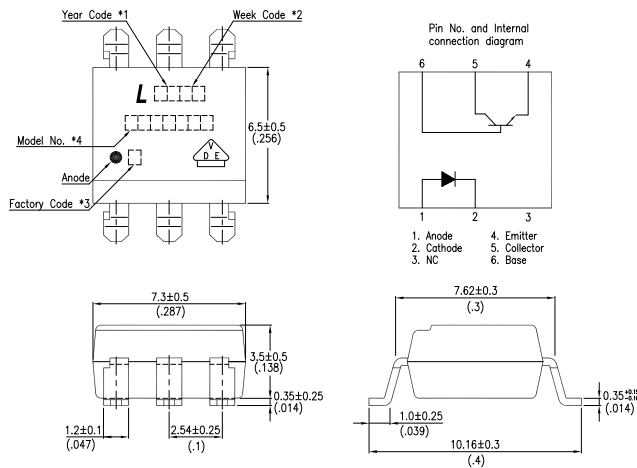
Notes :

1. Year date code.
2. 2-digit work week.
3. Factory identification mark shall be marked (Y: Thailand, W: China-CZ, X: China-TJ).
4. Model No.: CNY17-1, CNY17-2, CNY17-3, CNY17-4



Photocouplers  
CNY17-1-V thru CNY17-4-V SERIES

2.3 CNY17-1S-V, CNY17-2S-V, CNY17-3S-V, CNY17-4S-V :



Notes :

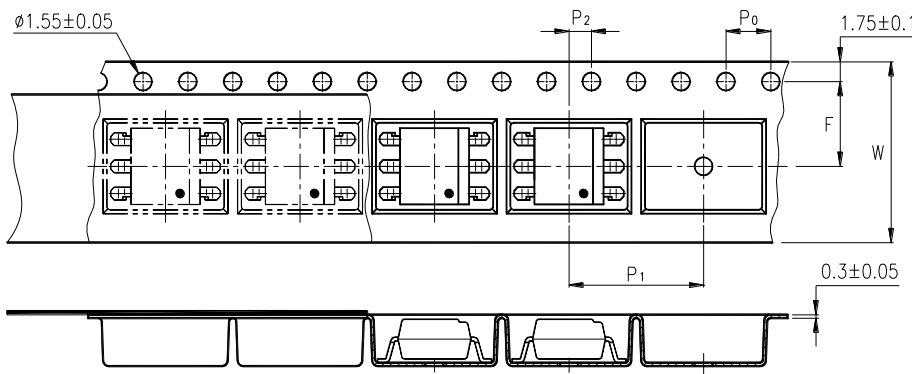
1. Year date code.
2. 2-digit work week.
3. Factory identification mark shall be marked (Y: Thailand, W: China-CZ, X: China-TJ).
4. Model No.: CNY17-1, CNY17-2, CNY17-3, CNY17-4



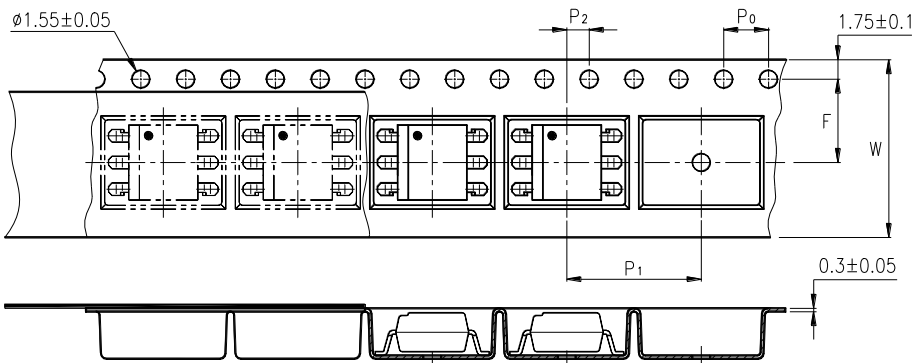
**Photocouplers**  
**CNY17-1-V thru CNY17-4-V SERIES**

**2. TAPING DIMENSIONS**

CNY17-1S-TA-V, CNY17-2S-TA-V, CNY17-3S-TA-V, CNY17-4S-TA-V :



CNY17-1S-TA1-V, CNY17-2S-TA1-V, CNY17-3S-TA1-V, CNY17-4S-TA1-V :



Description	Symbol	Dimension in mm (inch)
Tape wide	W	16±0.3 (0.63)
Pitch of sprocket holes	P <sub>0</sub>	4±0.1 (0.15)
Distance of compartment	F	7.5±0.1 (0.295)
	P <sub>2</sub>	2±0.1 (0.079)
Distance of compartment to compartment	P <sub>1</sub>	12±0.1 (0.472)

## Photocouplers CNY17-1-V thru CNY17-4-V SERIES

### 4. RATING AND CHARACTERISTICS

#### 4.1 Absolute Maximum Ratings at Ta=25°C

	Parameter	Symbol	Rating	Unit
Input	Forward Current	$I_F$	60	mA
	Reverse Voltage	$V_R$	6	V
	Power Dissipation	P	100	mW
Output	Collector - Emitter Voltage	$V_{CEO}$	70	V
	Emitter - Collector Voltage	$V_{ECO}$	7	V
	Collector - Base Voltage	$V_{CBO}$	70	V
	Collector Current	$I_C$	150	mA
	Collector Power Dissipation	$P_C$	150	mW
Total Power Dissipation		$P_{tot}$	250	mW
*1 Isolation Voltage		$V_{iso}$	5000	$V_{rms}$
Operating Temperature		$T_{opr}$	-55 ~ +100	°C
Storage Temperature		$T_{stg}$	-55 ~ +150	°C
*2 Soldering Temperature		$T_{sol}$	260	°C

\*1. AC For 1 Minute, R.H. = 40 ~ 60%

Isolation voltage shall be measured using the following method.

- (1) Short between anode and cathode on the primary side and between collector and emitter on the secondary side.
- (2) The isolation voltage tester with zero-cross circuit shall be used.
- (3) The waveform of applied voltage shall be a sine wave.

\*2. For 10 Seconds



## Photocouplers CNY17-1-V thru CNY17-4-V SERIES

### 4.2 ELECTRICAL OPTICAL CHARACTERISTICS at Ta=25°C

PARAMETER		SYMBOL	MIN.	TYP.	MAX.	UNIT	CONDITIONS	
INPUT	Forward Voltage	VF	—	1.45	1.65	V	IF=60mA	
	Reverse Current	IR	—	—	10	μA	VR=6V	
	Terminal Capacitance	Ct	—	—	100	pF	V=0, f=1KHz	
OUTPUT	Collector Dark Current	ICEO	—	—	50	nA	VCE=10V, IF=0	
	Collector-Emitter Breakdown Voltage	BVCEO	70	—	—	V	IC=0.1mA IF=0	
	Emitter-Collector Breakdown Voltage	BVECO	7	—	—	V	IE=10μA IF=0	
	Collector-Base Breakdown Voltage	BVCBO	70	—	—	V	IC=0.1mA IF=0	
TRANSFER CHARACTERISTICS	*Transfer Ratio	CNY17-1	CTR	40	—	80	%	IF=10mA VCE=5V
		CNY17-2		63	—	125		
		CNY17-3		100	—	200		
		CNY17-4		160	—	320		
	Collector-Emitter Saturation Voltage	VCE(sat)	—	—	0.3	V	IF=10mA IC=2.5mA	
	Isolation Resistance	Riso	100	—	—	GΩ	DC500V 40 ~ 60% R.H.	
	Floating Capacitance	Cf	—	—	2	pF	V=0, f=1MHz	
	Response Time (Rise)	tr	—	5	10	μs	VCE=10V, IC=2mA	
Response Time (Fall)	tf	—	5	10	μs	RL=100Ω		

$$*CTR = \frac{I_C}{I_F} \times 100\%$$



## Photocouplers CNY17-1-V thru CNY17-4-V SERIES

### 4.3 ISOLATION SPECIFICATION ACCORDING TO VDE

Parameter	Symbol	Conditions	Rating	Unit	Remark
Class of environmental test	-	DIN IEC68	55/100/21	-	
Pollution	-	DIN VDE0110	2	-	
Maximum Operating Isolation Voltage	$V_{IORM}$	-	850	$V_{PEAK}$	
Partial Discharge Test Voltage (Between Input and Output)	Diagram 1	$t_p=60s, q_c<5pC$	1275	$V_{PEAK}$	Refer to the Diagram 1, 2
	Diagram 2	$t_p=1s, q_c<5pC$	1594	$V_{PEAK}$	
Maximum Over-voltage	$V_{INITIAL}$	$t_{INI} = 10s$	6000	$V_{PEAK}$	
Safety Maximum Ratings					
1) Case Temperature	$T_{si}$	$I_F = 0, P_c = 0$	175	$^{\circ}C$	Refer to the Figure 1, 3
2) Input Current	$I_{si}$	$P_c=0$	400	mA	
3) Electric Power (Output or Total Power Issipation)	$P_{si}$	-	700	mW	
Isolation Resistance (Test Voltage Between Input and Output : DC500V)	$R_{ISO}$	$T_a=T_{si}$	MIN. $10^9$	$\Omega$	
		$T_a=T_{opr}(MAX.)$	MIN. $10^{11}$		
		$T_a=25^{\circ}C$	MIN. $10^{12}$		

#### Precautions in performing isolation test

\* Partial discharge test methods shall be the ones according to the specifications of DIN EN 60747-5-5

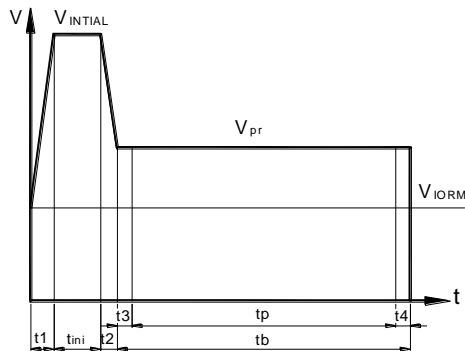
\* Please don't carry out isolation test ( $V_{iso}$ ) over  $V_{INITIAL}$ , This product deteriorates isolation characteristics by partial discharge due to applying high voltage (ex.  $V_{INITIAL}$ ). And there is possibility that this product occurs partial discharge in operating isolation voltage ( $V_{IORM}$ )



Photocouplers  
CNY17-1-V thru CNY17-4-V SERIES

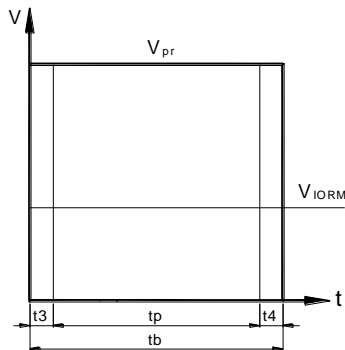
4.4 PARTIAL DISCHARGE TEST METHOD

Method (A) for type testing and random testing.



t1, t2 = 1 to 10s  
 t3, t4 = 1 s  
 tp (Partial Discharge Measuring Time)= 60s  
 tb = 62s  
 tni = 10s

Method (B) for routine testing.



t3, t4 = 0.1s  
 tp (Partial Discharge Measuring Time)= 1s  
 tb = 1.2s

The partial discharge level shall not exceed 5 pc during the partial discharge measuring time interval  $t_p$  under the test conditions shown above.



Photocouplers  
CNY17-1-V thru CNY17-4-V SERIES

5. CHARACTERISTICS CURVES

Fig.1 Forward Current vs. Ambient Temperature

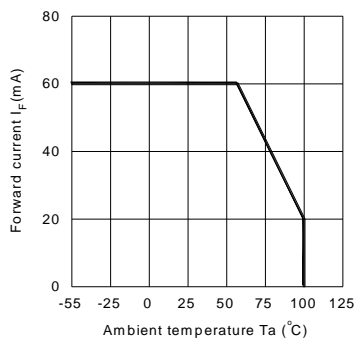


Fig.2 Collector Power Dissipation vs. Ambient Temperature

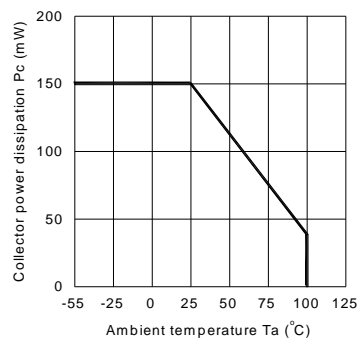


Fig.3 Collector-emitter Saturation Voltage vs. Forward Current

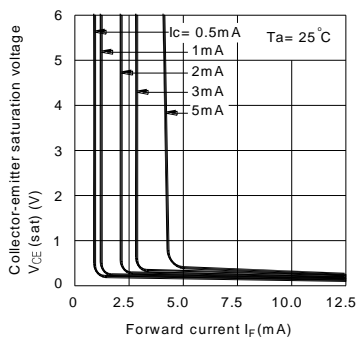


Fig.4 Forward Current vs. Forward Voltage

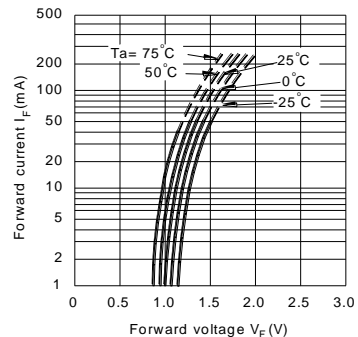


Fig.5 Current Transfer Ratio vs. Forward Current

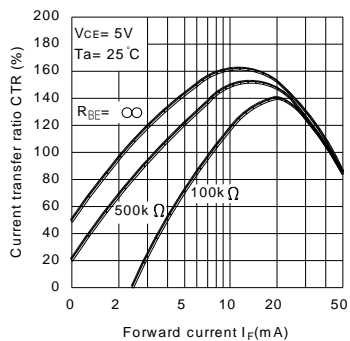
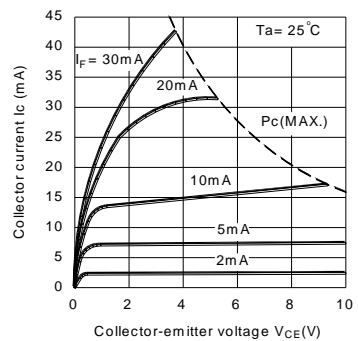


Fig.6 Collector Current vs. Collector-emitter Voltage





# Photocouplers CNY17-1-V thru CNY17-4-V SERIES

Fig.7 Relative Current Transfer Ratio vs. Ambient Temperature

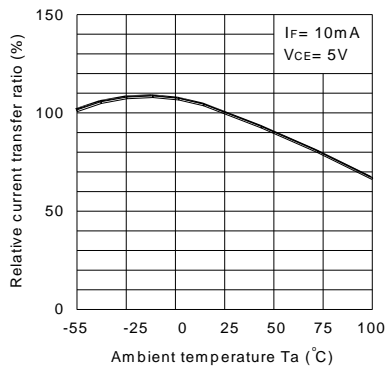


Fig.8 Collector-emitter Saturation Voltage vs. Ambient Temperature

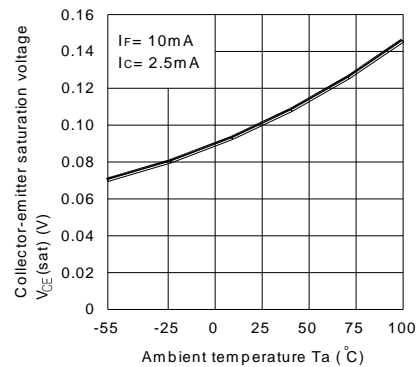


Fig.9 Collector Dark Current vs. Ambient Temperature

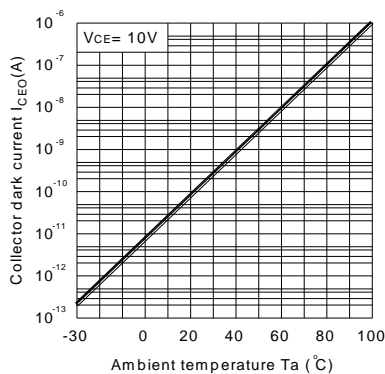


Fig.10 Response Time vs. Load Resistance

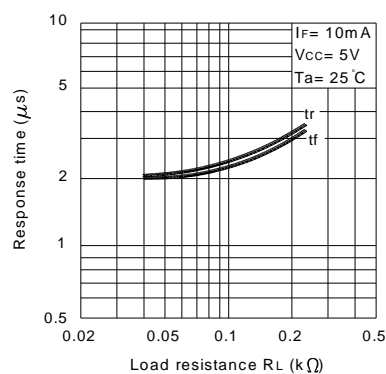
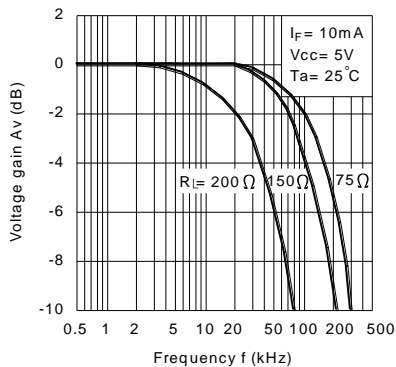
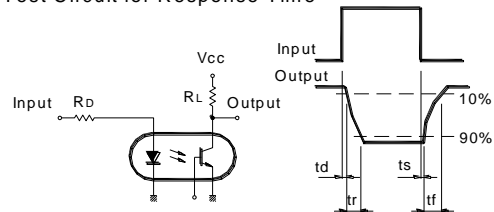


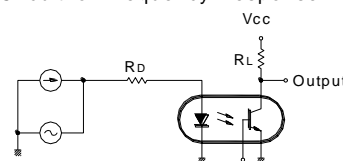
Fig.11 Frequency Response



Test Circuit for Response Time



Test Circuit for Frequency Response



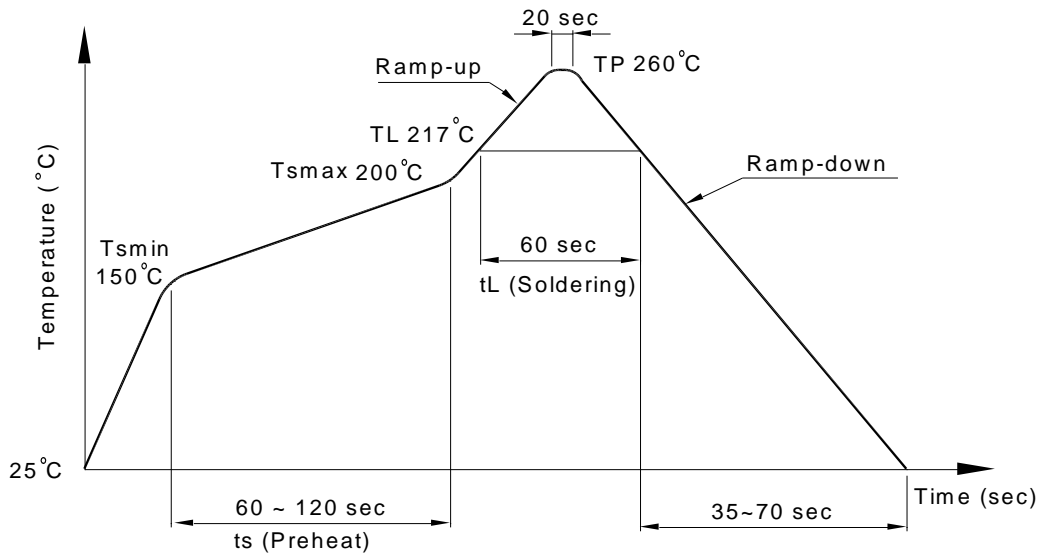
## Photocouplers CNY17-1-V thru CNY17-4-V SERIES

### 6. TEMPERATURE PROFILE OF SOLDERING

#### 6.1 IR Reflow soldering (JEDEC-STD-020C compliant)

One time soldering reflow is recommended within the condition of temperature and time profile shown below. Do not solder more than three times.

Profile item	Conditions
Preheat	
- Temperature Min ( $T_{Smin}$ )	150°C
- Temperature Max ( $T_{Smax}$ )	200°C
- Time (min to max) (ts)	90±30 sec
Soldering zone	
- Temperature ( $T_L$ )	217°C
- Time ( $t_L$ )	60 sec
Peak Temperature ( $T_P$ )	260°C
Ramp-up rate	3°C / sec max.
Ramp-down rate	3~6°C / sec



## Photocouplers CNY17-1-V thru CNY17-4-V SERIES

### 6.2 Wave soldering (JEDEC22A111 compliant)

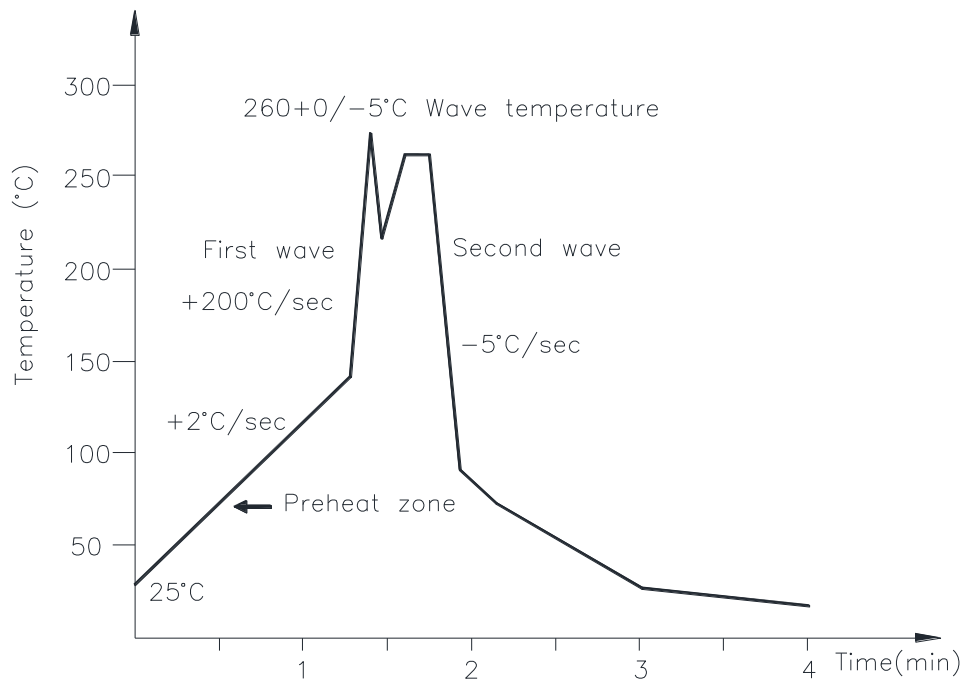
One time soldering is recommended within the condition of temperature.

Temperature:  $260 \pm 0 / -5^{\circ}\text{C}$

Time: 10 sec.

Preheat temperature: 25 to  $140^{\circ}\text{C}$

Preheat time: 30 to 80 sec.



### 6.3 Hand soldering by soldering iron

Allow single lead soldering in every single process. One time soldering is recommended.

Temperature:  $380 \pm 0 / -5^{\circ}\text{C}$

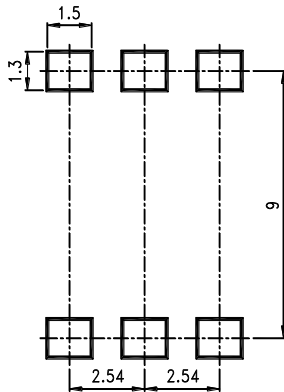
Time: 3 sec max.

## Photocouplers

### CNY17-1-V thru CNY17-4-V SERIES

#### 7. RRECOMMENDED FOOT PRINT PATTERNS (MOUNT PAD)

Unit: mm



#### 8. NAMING RULE

# CNY17-X(1)-(2)-(3)

DEVICE PART NUMBER

(1)= FORM TYPE (S, M or none)

(2)= TAPING TYPE (TA, TA1 or none)

(3)= VDE Option

#### 9. Notes:

- LiteOn is continually improving the quality, reliability, function or design and LiteOn reserves the right to make changes without further notices.
- The products shown in this publication are designed for the general use in electronic applications such as office automation equipment, communications devices, audio/visual equipment, electrical application and instrumentation.
- For equipment/devices where high reliability or safety is required, such as space applications, nuclear power control equipment, medical equipment, etc, please contact our sales representatives.
- When requiring a device for any "specific" application, please contact our sales in advice.
- If there are any questions about the contents of this publication, please contact us at your convenience.
- The contents described herein are subject to change without prior notice.
- Immerge unit's body in solder paste is not recommended.

## OUR CERTIFICATE

DiGi provide top-quality products and perfect service for customer worldwide through standardization, technological innovation and continuous improvement. DiGi through third-party certification, we stricly control the quality of products and services. Welcome your RFQ to

Email: [Info@DiGi-Electronics.com](mailto:Info@DiGi-Electronics.com)



Tel: +00 852-30501935

RFQ Email: [Info@DiGi-Electronics.com](mailto:Info@DiGi-Electronics.com)

DiGi is a global authorized distributor of electronic components.