

EDSSC1LFS Datasheet

www.digi-electronics.com



<https://www.DiGi-Electronics.com>

DiGi Electronics Part Number	EDSSC1LFS-DG
Manufacturer	C&K
Manufacturer Product Number	EDSSC1LFS
Description	SWITCH TACTILE SPST-NO 0.1A 100V
Detailed Description	Tactile Switch SPST-NO Top Actuated Surface Mount

This model EDSSC1LFS is available at DiGi Electronics.

DiGi Electronics offers a global database of semiconductor and electronic component datasheets.

We welcome your inquiries regarding pricing, lead time, or other product-related questions.

 [Request a Quote](#)

 [Datasheet Search](#)



Tel: +00 852-30501935

RFQ Email: Info@DiGi-Electronics.com

DiGi is a global authorized distributor of electronic components.

Purchase and inquiry

Manufacturer Product Number:

EDSSC1LFS

Series:

ED

Circuit:

SPST-NO

Contact Rating @ Voltage:

0.1A @ 100VAC/DC

Mounting Type:

Surface Mount

Actuator Length, Right Angle:

-

Termination Style:

SMD (SMT) Tab

Illumination:

Non-Illuminated

Illumination Voltage (Nominal):

-

Ingress Protection:

IP67 - Dust Tight, Waterproof

Operating Temperature:

-25°C ~ 70°C

Switch Travel:

0.30mm

Base Product Number:

EDSSC1

Manufacturer:

C&K

Product Status:

Active

Switch Function:

Off-Mom

Actuator Type:

Snap Dome

Actuator Height off PCB, Vertical:

1.20mm

Actuator Orientation:

Top Actuated

Outline:

-

Illumination Type, Color:

-

Operating Force:

240gf

Features:

Sealed - Fully

Actuator Material:

-

Mechanical Life:

1,000,000 Cycles

Environmental & Export classification

RoHS Status:

ROHS3 Compliant

REACH Status:

REACH Unaffected

HTSUS:

8536.50.9031

Moisture Sensitivity Level (MSL):

1 (Unlimited)

ECCN:

EAR99

ED & EDM Series



Description

The ED keyswitches are self-cleaning, short travel sealed tact switches commonly found in panels and various forms of instrumentation. Known for providing great tactile feedback, the ED series is available in three actuation forces and is compliant with RoHS regulations. Throughout the aerospace industry, the EDM sealed tact keyswitches are used in a variety of instrument panels, giving users a high-performance, long-lasting switch with great tactile feedback. EDM keyswitches are built for short travel and are self-cleaning, with three actuation forces available.

Features & Benefits

- Short travel
- Good tactile feedback
- Self cleaning
- 3 actuation forces

Applications

- Aircraft
- Instrument
- Panels
- Radio equipment

Specifications

ED	Disc Element
EDM	Disc Element and double dome
Function	Momentary action
Contact Type	Normally open - SPST
Terminals	Through hole PCB terminations or Tabs
Operating Life	1,000,000 cycles
Packaging	Trays 50 pieces

Electrical Characteristics

	Silver	Gold
Max. Power	1 VA	0.2 VA
Min./Max. Voltage	20 mVDC - 100 VDC	
Min./Max. Current	1 mA to 100 mA	50µA to 50 mA
Dielectric Strength	≥ 250 Vrms	
Contact Resistance	≤ 100 mΩ	
Insulation Resistance	Initial measurement ≥ 1 GΩ After damp heat ≥ 10 MΩ	
Bounce Time	≤ 3 ms	

Environmental Characteristics

Materials	Silver	Gold
Operating Temperature	-25°C to 70°C	-55°C to 85°C

ED & EDM Series

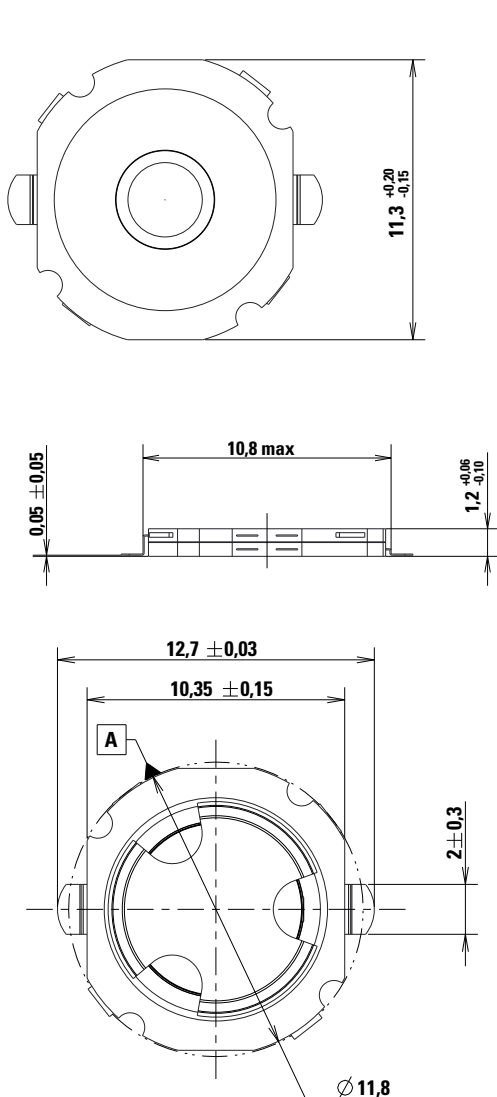


Mechanical Characteristics

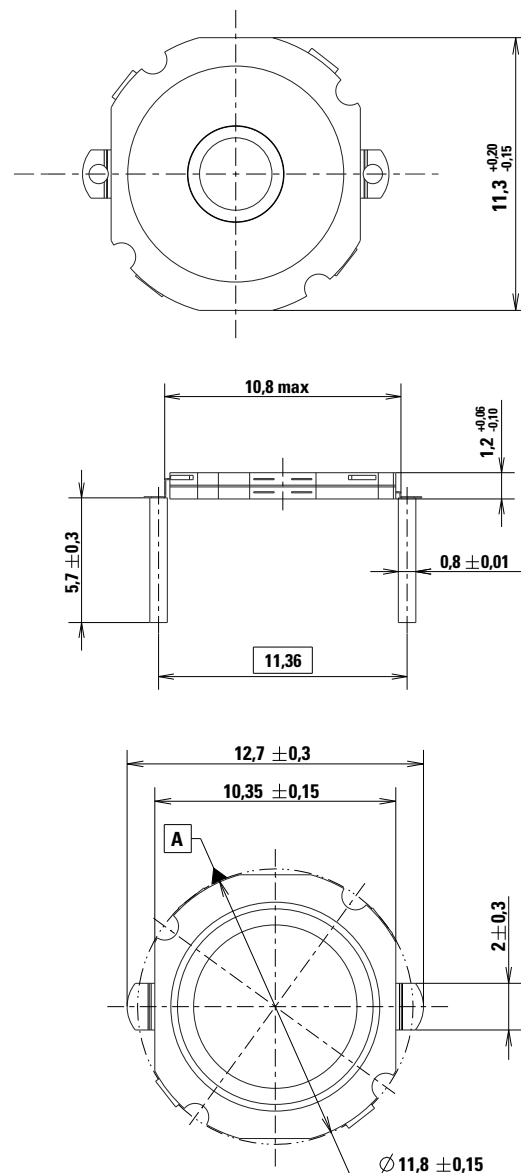
Type	Operating Force N (grams)	Tactile Feeling $\Delta\%$	Return Force N	Travel (mm)
EDXXXX LFX	2.4 (240) \pm 25%	\geq 30%	\geq 0.4	0.3 \pm 0.15
EDM450XXX LFX	4.5 (450) \pm 25%	\geq 25%	\geq 1	0.5 \pm 0.25
EDM650XXX LFX	6.5 (650) \pm 25%	\geq 25%	\geq 1.6	0.6 \pm 0.25

Simultaneity: \leq 0.05 mm

ED/EDM SC



ED/EDM



ED & EDM Series

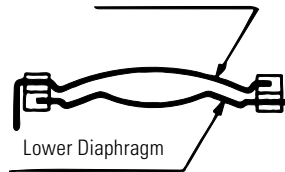


Switch Action Principal

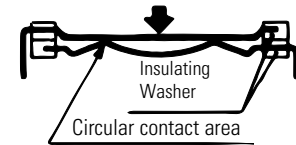
The disc contact is essentially made of two separate conductive dome diaphragms separated by an insulated material.

The upper diaphragm is shaped so that under pressure it collapses suddenly and establishes contact with the lower diaphragm.

Upper Diaphragm Switch in Resting Position

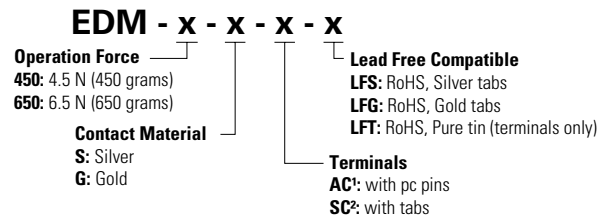
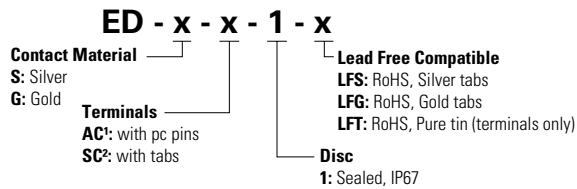


Pressure Switch in Active Position



Ordering Number

Our easy build-a-switch concept allows you to mix and match options to create the switch you need. To order, select desired option from each category and place it in the appropriate box.



Notes:

1. AC terminals only available with LFT
2. SC terminals only available with LFS or LFG

OUR CERTIFICATE

DiGi provide top-quality products and perfect service for customer worldwide through standardization, technological innovation and continuous improvement. DiGi through third-party certification, we stricly control the quality of products and services. Welcome your RFQ to

Email: Info@DiGi-Electronics.com



Tel: +00 852-30501935

RFQ Email: Info@DiGi-Electronics.com

DiGi is a global authorized distributor of electronic components.