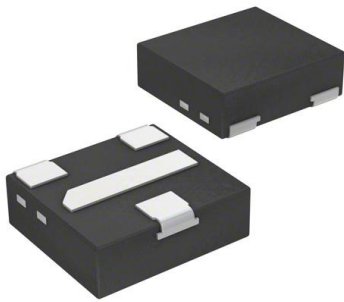


BC817-25QCZ Datasheet

www.digi-electronics.com



<https://www.DiGi-Electronics.com>

DiGi Electronics Part Number	BC817-25QCZ-DG
Manufacturer	Nexperia USA Inc.
Manufacturer Product Number	BC817-25QCZ
Description	TRANS NPN 45V 0.5A DFN1412D-3
Detailed Description	Bipolar (BJT) Transistor NPN 45 V 500 mA 100MHz 3 80 mW Surface Mount, Wettable Flank DFN1412D-3



Tel: +00 852-30501935

RFQ Email: Info@DiGi-Electronics.com

DiGi is a global authorized distributor of electronic components.

Purchase and inquiry

Manufacturer Product Number:

BC817-25QCZ

Series:

BC817QC

Transistor Type:

NPN

Voltage - Collector Emitter Breakdown (Max):

45 V

Current - Collector Cutoff (Max):

100nA (ICBO)

Power - Max:

380 mW

Operating Temperature:

150°C (TJ)

Package / Case:

3-XDFN Exposed Pad

Base Product Number:

BC817

Manufacturer:

Nexperia USA Inc.

Product Status:

Obsolete

Current - Collector (Ic) (Max):

500 mA

Vce Saturation (Max) @ Ib, Ic:

700mV @ 50mA, 500mA

DC Current Gain (hFE) (Min) @ Ic, Vce:

160 @ 100mA, 1V

Frequency - Transition:

100MHz

Mounting Type:

Surface Mount, Wettable Flank

Supplier Device Package:

DFN1412D-3

Environmental & Export classification

RoHS Status:

ROHS3 Compliant

REACH Status:

REACH Unaffected

HTSUS:

8541.21.0075

Moisture Sensitivity Level (MSL):

3 (168 Hours)

ECCN:

EAR99



BC817QC series

45 V, 500 mA NPN general-purpose transistors

Rev. 2 — 28 October 2020

Product data sheet

1. General description

NPN general-purpose transistor in an ultra small DFN1412D-3 (SOT8009) leadless Surface-Mounted Device (SMD) plastic package with side-wettable flanks.

Table 1. Product overview

Type number	Package			PNP complement
	Name	JEDEC	Version	
BC817-16QC	DFN1412D-3	MO-340CA	SOT8009	BC807-16QC
BC817-25QC				BC807-25QC
BC817-40QC				BC807-40QC

2. Features and benefits

- High power dissipation capability
- High current
- Three current gain selections
- Suitable for Automatic Optical Inspection (AOI) of solder joint
- Smaller footprint compared to conventional leaded SMD packages
- Low package height of 0.5 mm
- AEC-Q101 qualified

3. Applications

- General-purpose switching and amplification
- Space restricted applications

4. Quick reference data

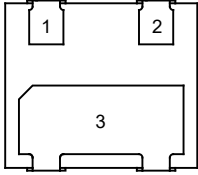
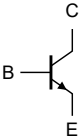
Table 2. Quick reference data

Symbol	Parameter	Conditions		Min	Typ	Max	Unit
V_{CE0}	collector-emitter voltage	open base; $T_{amb} = 25\text{ °C}$		-	-	45	V
I_C	collector current	$T_{amb} = 25\text{ °C}$		-	-	500	mA
I_{CM}	peak collector current	single pulse; $t_p \leq 1\text{ ms}$; $T_{amb} = 25\text{ °C}$		-	-	1	A
h_{FE}	DC current gain						
	BC817-16QC	$V_{CE} = 1\text{ V}$; $I_C = 100\text{ mA}$ $T_{amb} = 25\text{ °C}$	[1]	100	-	250	
	BC817-25QC		[1]	160	-	400	
	BC817-40QC		[1]	250	-	600	

[1] pulsed; $t_p \leq 300\text{ }\mu\text{s}$; $\delta \leq 0.02$

5. Pinning information

Table 3. Pinning

Pin	Symbol	Description	Simplified outline	Graphic symbol
1	B	base	 <p>Bottom view DFN1412D-3 (SOT8009)</p>	 <p>sym021</p>
2	E	emitter		
3	C	collector		

6. Ordering information

Table 4. Ordering information

Type number	Package		
	Name	Description	Version
BC817-16QC	DFN1412D-3	DFN1412D-3: plastic thermal enhanced ultra thin small outline package; no leads; 3 terminals; body: 1.4 x 1.2 x 0.5 mm	SOT8009 (MO-340CA)
BC817-25QC			
BC817-40QC			

7. Marking

Table 5. Marking

Type number	Marking code
BC817-16QC	9M
BC817-25QC	9N
BC817-40QC	9P

8. Limiting values

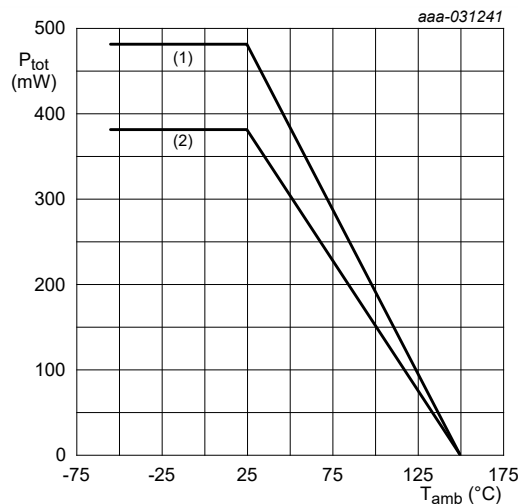
Table 6. Limiting values

In accordance with the Absolute Maximum Rating System (IEC 60134).

Symbol	Parameter	Conditions	Min	Max	Unit
V_{CBO}	collector-base voltage	open emitter; $T_{amb} = 25\text{ °C}$	-	50	V
V_{CEO}	collector-emitter voltage	open base; $T_{amb} = 25\text{ °C}$	-	45	V
V_{EBO}	emitter-base voltage	open collector; $T_{amb} = 25\text{ °C}$	-	5	V
I_C	collector current	$T_{amb} = 25\text{ °C}$	-	500	mA
I_{CM}	peak collector current	single pulse; $t_p \leq 1\text{ ms}$; $T_{amb} = 25\text{ °C}$	-	1	A
I_{BM}	peak base current	single pulse; $t_p \leq 1\text{ ms}$; $T_{amb} = 25\text{ °C}$	-	200	mA
P_{tot}	total power dissipation	$T_{amb} \leq 25\text{ °C}$	[1]	380	mW
			[2]	480	mW
T_j	junction temperature		-	150	°C
T_{amb}	ambient temperature		-55	150	°C
T_{stg}	storage temperature		-65	150	°C

[1] Device mounted on an FR4 PCB, single-sided 35 μm copper, tin-plated and standard footprint.

[2] Device mounted on an FR4 PCB, single-sided 70 μm copper, tin-plated and standard footprint.



(1) FR4 PCB; single-sided 70 μm copper, tin-plated and standard footprint

(2) FR4 PCB; single-sided 35 μm copper, tin-plated and standard footprint

Fig. 1. Power derating curves for SOT8009

9. Thermal characteristics

Table 7. Thermal characteristics

Symbol	Parameter	Conditions		Min	Typ	Max	Unit
$R_{th(j-a)}$	thermal resistance from junction to ambient	in free air; $T_{amb} = 25\text{ °C}$	[1]	-	-	329	K/W
			[2]	-	-	261	K/W

- [1] Device mounted on an FR4 PCB, single-sided 35 μm copper, tin-plated and standard footprint.
- [2] Device mounted on an FR4 PCB, single-sided 70 μm copper, tin-plated and standard footprint.

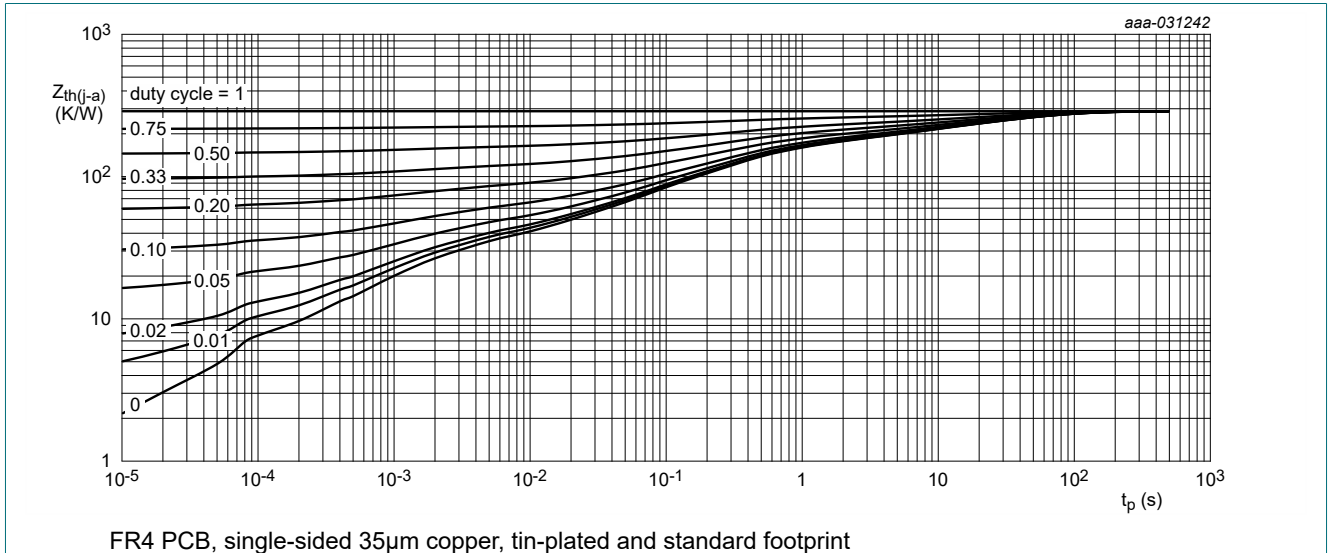


Fig. 2. Transient thermal impedance from junction to ambient as a function of pulse duration; typical values

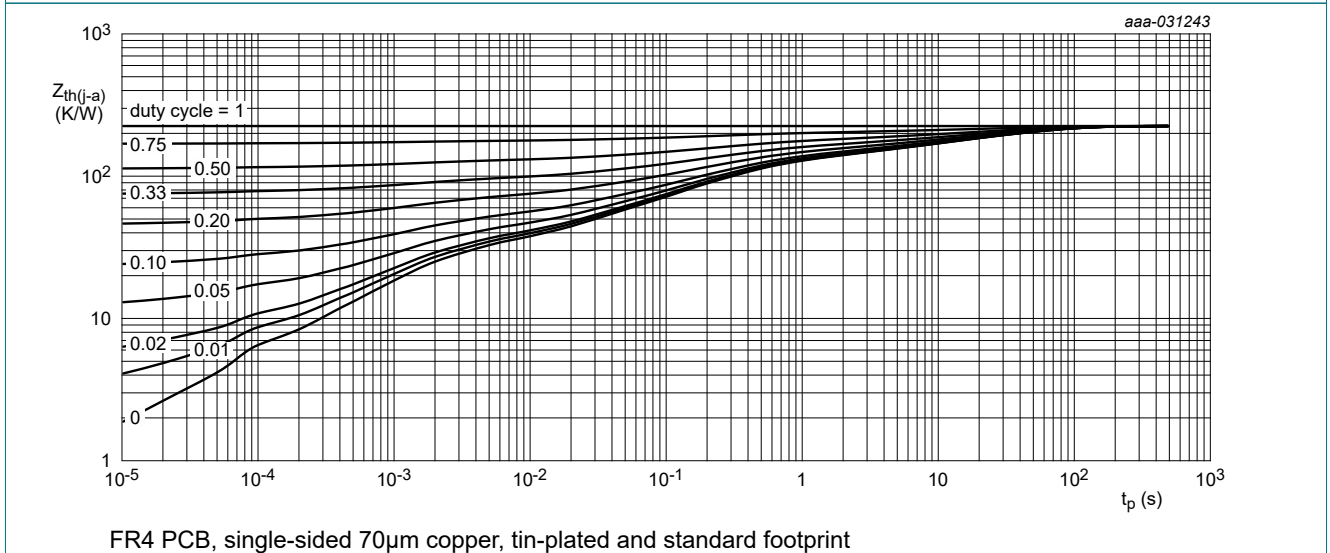


Fig. 3. Transient thermal impedance from junction to ambient as a function of pulse duration; typical values

10. Characteristics

Table 8. Characteristics

Symbol	Parameter	Conditions	Min	Typ	Max	Unit
$V_{(BR)CBO}$	collector-base breakdown voltage	$I_C = 100 \mu\text{A}; I_E = 0 \text{ A}; T_{\text{amb}} = 25 \text{ }^\circ\text{C}$	50	-		V
$V_{(BR)CEO}$	collector-emitter breakdown voltage	$I_C = 10 \text{ mA}; I_E = 0 \text{ A}; T_{\text{amb}} = 25 \text{ }^\circ\text{C}$	45	-		V
$V_{(BR)EBO}$	emitter-base breakdown voltage	$I_E = 100 \mu\text{A}; I_C = 0 \text{ A}; T_{\text{amb}} = 25 \text{ }^\circ\text{C}$	5	-		V
I_{CBO}	collector-base cut-off current	$V_{CB} = 20 \text{ V}; I_E = 0 \text{ A}; T_{\text{amb}} = 25 \text{ }^\circ\text{C}$	-	-	100	nA
		$V_{CB} = 20 \text{ V}; I_E = 0 \text{ A}; T_j = 150 \text{ }^\circ\text{C}$	-	-	5	μA
I_{EBO}	emitter-base cut-off current	$V_{EB} = 5 \text{ V}; I_C = 0 \text{ A}; T_{\text{amb}} = 25 \text{ }^\circ\text{C}$	-	-	100	nA
h_{FE}	DC current gain					
	BC817-16QC	$V_{CE} = 1 \text{ V}; I_C = 100 \text{ mA}; T_{\text{amb}} = 25 \text{ }^\circ\text{C}$	[1]	100	-	250
	BC817-25QC	$V_{CE} = 1 \text{ V}; I_C = 100 \text{ mA}; T_{\text{amb}} = 25 \text{ }^\circ\text{C}$	[1]	160	-	400
	BC817-40QC	$V_{CE} = 1 \text{ V}; I_C = 100 \text{ mA}; T_{\text{amb}} = 25 \text{ }^\circ\text{C}$	[1]	250	-	600
		$V_{CE} = 1 \text{ V}; I_C = 500 \text{ mA}; T_{\text{amb}} = 25 \text{ }^\circ\text{C}$		40	-	-
V_{CEsat}	collector-emitter saturation voltage	$I_C = 500 \text{ mA}; I_B = 50 \text{ mA}; T_{\text{amb}} = 25 \text{ }^\circ\text{C}$	[1]	-	-	700 mV
V_{BE}	base-emitter voltage	$V_{CE} = 1 \text{ V}; I_C = 500 \text{ mA}; T_{\text{amb}} = 25 \text{ }^\circ\text{C}$	[1]	-	-	1.2 V
f_T	transition frequency	$V_{CE} = 5 \text{ V}; I_C = 10 \text{ mA}; f = 100 \text{ MHz}; T_{\text{amb}} = 25 \text{ }^\circ\text{C}$		100	-	MHz
C_C	collector capacitance	$V_{CB} = 10 \text{ V}; I_E = i_e = 0 \text{ A}; f = 1 \text{ MHz}; T_{\text{amb}} = 25 \text{ }^\circ\text{C}$		-	3	pF

[1] pulsed; $t_p \leq 300 \mu\text{s}$; $\delta \leq 0.02$

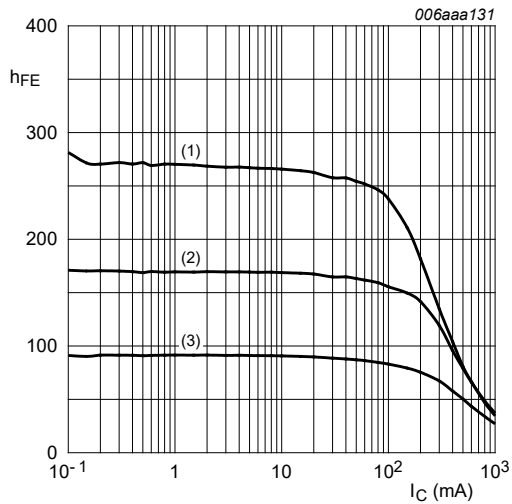

 $V_{CE} = 1 \text{ V}$
(1) $T_{amb} = 150 \text{ }^{\circ}\text{C}$ (2) $T_{amb} = 25 \text{ }^{\circ}\text{C}$ (3) $T_{amb} = -55 \text{ }^{\circ}\text{C}$

Fig. 4. BC817-16QC: DC current gain as a function of collector current; typical values

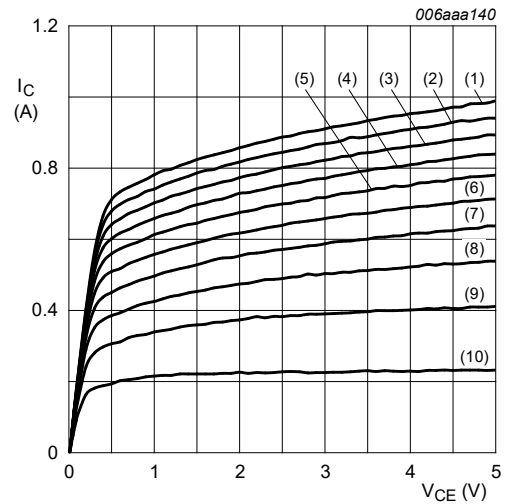

 $T_{amb} = 25 \text{ }^{\circ}\text{C}$
(1) $I_B = 16.0 \text{ mA}$ (2) $I_B = 14.4 \text{ mA}$ (3) $I_B = 12.8 \text{ mA}$ (4) $I_B = 11.2 \text{ mA}$ (5) $I_B = 9.6 \text{ mA}$ (6) $I_B = 8.0 \text{ mA}$ (7) $I_B = 6.4 \text{ mA}$ (8) $I_B = 4.8 \text{ mA}$ (9) $I_B = 3.2 \text{ mA}$ (10) $I_B = 1.6 \text{ mA}$

Fig. 5. BC817-16QC: Collector current as a function of collector-emitter voltage; typical values

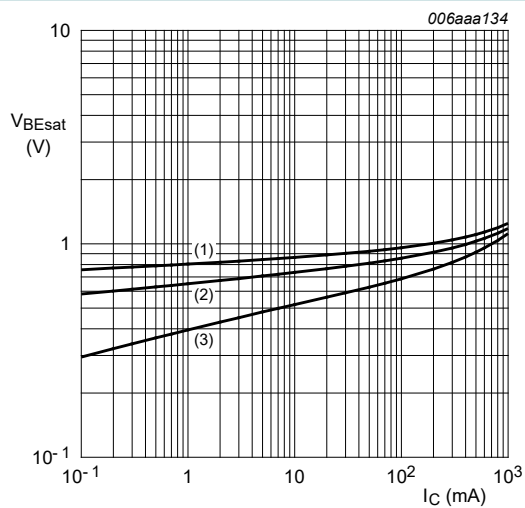

 $I_C/I_B = 10$
(1) $T_{amb} = -55 \text{ }^{\circ}\text{C}$ (2) $T_{amb} = 25 \text{ }^{\circ}\text{C}$ (3) $T_{amb} = 150 \text{ }^{\circ}\text{C}$

Fig. 6. BC817-16QC: Base-emitter saturation voltage as a function of collector current; typical values

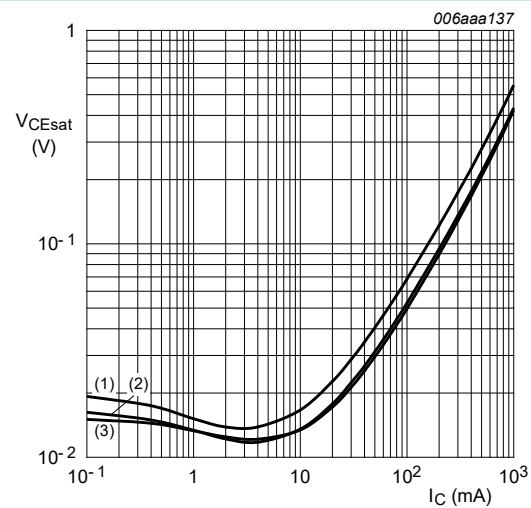
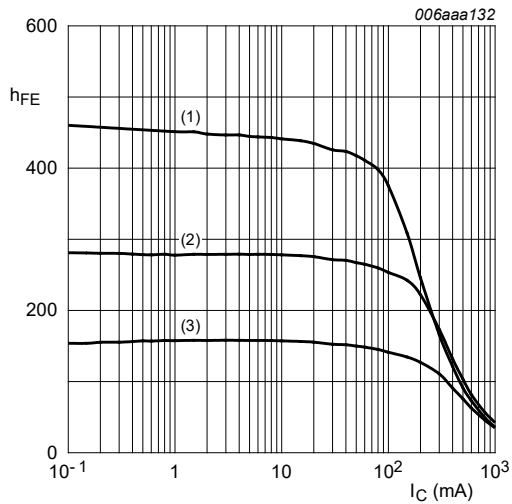

 $I_C/I_B = 10$
(1) $T_{amb} = 150 \text{ }^{\circ}\text{C}$ (2) $T_{amb} = 25 \text{ }^{\circ}\text{C}$ (3) $T_{amb} = -55 \text{ }^{\circ}\text{C}$

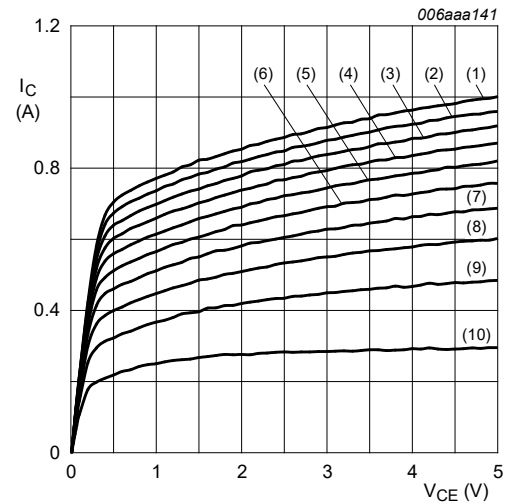
Fig. 7. BC817-16QC: Collector-emitter saturation voltage as a function of collector current; typical values



$V_{CE} = 1\text{ V}$

- (1) $T_{amb} = 150\text{ °C}$
- (2) $T_{amb} = 25\text{ °C}$
- (3) $T_{amb} = -55\text{ °C}$

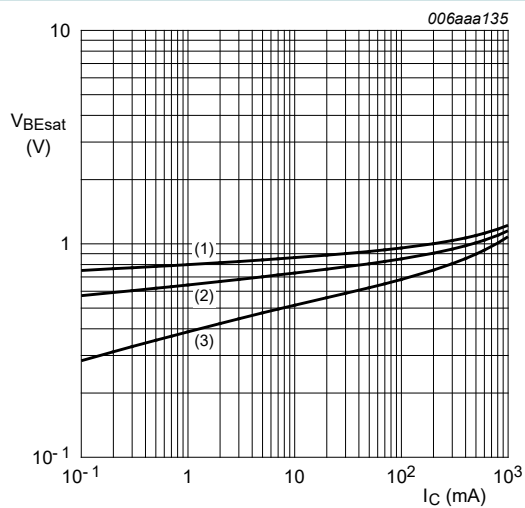
Fig. 8. BC817-25QC: DC current gain as a function of collector current; typical values



$T_{amb} = 25\text{ °C}$

- (1) $I_B = 13.0\text{ mA}$
- (2) $I_B = 11.7\text{ mA}$
- (3) $I_B = 10.4\text{ mA}$
- (4) $I_B = 9.1\text{ mA}$
- (5) $I_B = 7.8\text{ mA}$
- (6) $I_B = 6.5\text{ mA}$
- (7) $I_B = 5.2\text{ mA}$
- (8) $I_B = 3.9\text{ mA}$
- (9) $I_B = 2.6\text{ mA}$
- (10) $I_B = 1.3\text{ mA}$

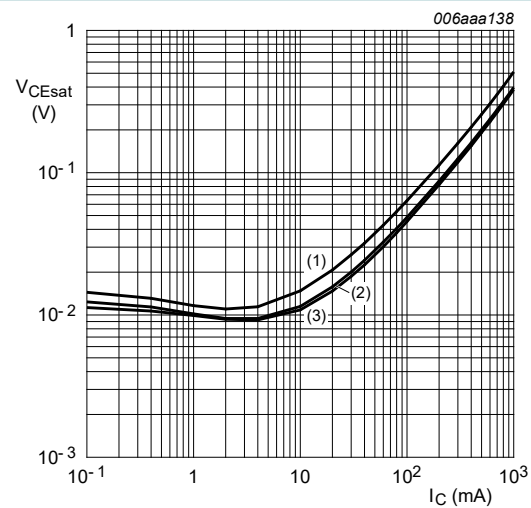
Fig. 9. BC817-25QC: Collector current as a function of collector-emitter voltage; typical values



$I_C/I_B = 10$

- (1) $T_{amb} = -55\text{ °C}$
- (2) $T_{amb} = 25\text{ °C}$
- (3) $T_{amb} = 150\text{ °C}$

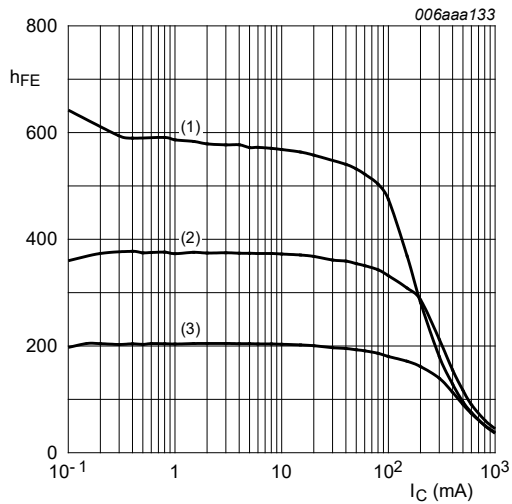
Fig. 10. BC817-25QC: Base-emitter saturation voltage as a function of collector current; typical values



$I_C/I_B = 10$

- (1) $T_{amb} = 150\text{ °C}$
- (2) $T_{amb} = 25\text{ °C}$
- (3) $T_{amb} = -55\text{ °C}$

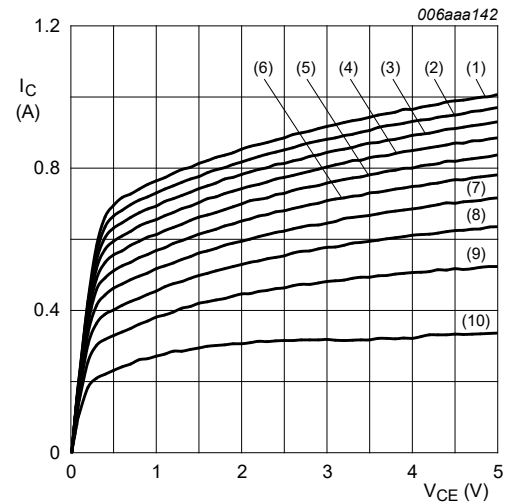
Fig. 11. BC817-25QC: Collector-emitter saturation voltage as a function of collector current; typical values



$V_{CE} = 1\text{ V}$

- (1) $T_{amb} = 150\text{ °C}$
- (2) $T_{amb} = 25\text{ °C}$
- (3) $T_{amb} = -55\text{ °C}$

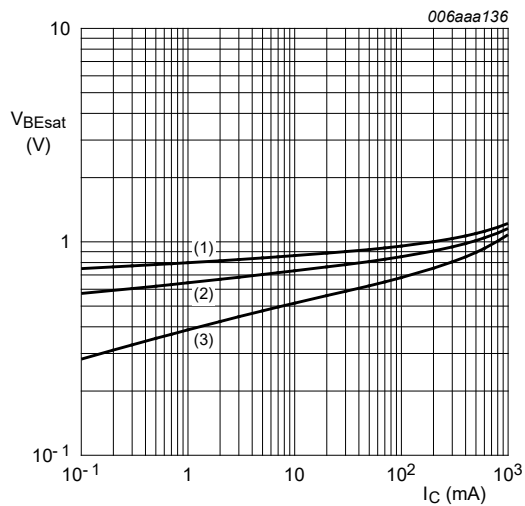
Fig. 12. BC817-40QC: DC current gain as a function of collector current; typical values



$T_{amb} = 25\text{ °C}$

- (1) $I_B = 12.0\text{ mA}$
- (2) $I_B = 10.8\text{ mA}$
- (3) $I_B = 9.6\text{ mA}$
- (4) $I_B = 8.4\text{ mA}$
- (5) $I_B = 7.2\text{ mA}$
- (6) $I_B = 6.0\text{ mA}$
- (7) $I_B = 4.8\text{ mA}$
- (8) $I_B = 3.6\text{ mA}$
- (9) $I_B = 2.4\text{ mA}$
- (10) $I_B = 1.2\text{ mA}$

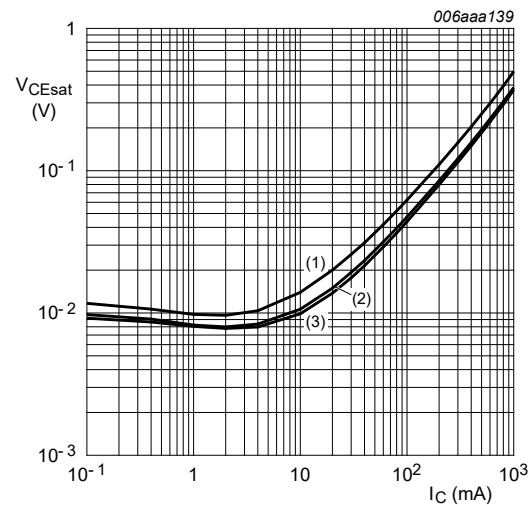
Fig. 13. BC817-40QC: Transition frequency as a function of collector current; typical values



$I_C/I_B = 10$

- (1) $T_{amb} = -55\text{ °C}$
- (2) $T_{amb} = 25\text{ °C}$
- (3) $T_{amb} = 150\text{ °C}$

Fig. 14. BC817-40QC: Base-emitter saturation voltage as a function of collector current; typical values



$I_C/I_B = 10$

- (1) $T_{amb} = 150\text{ °C}$
- (2) $T_{amb} = 25\text{ °C}$
- (3) $T_{amb} = -55\text{ °C}$

Fig. 15. BC817-40QC: Collector-emitter saturation voltage as a function of collector current; typical values

11. Test information

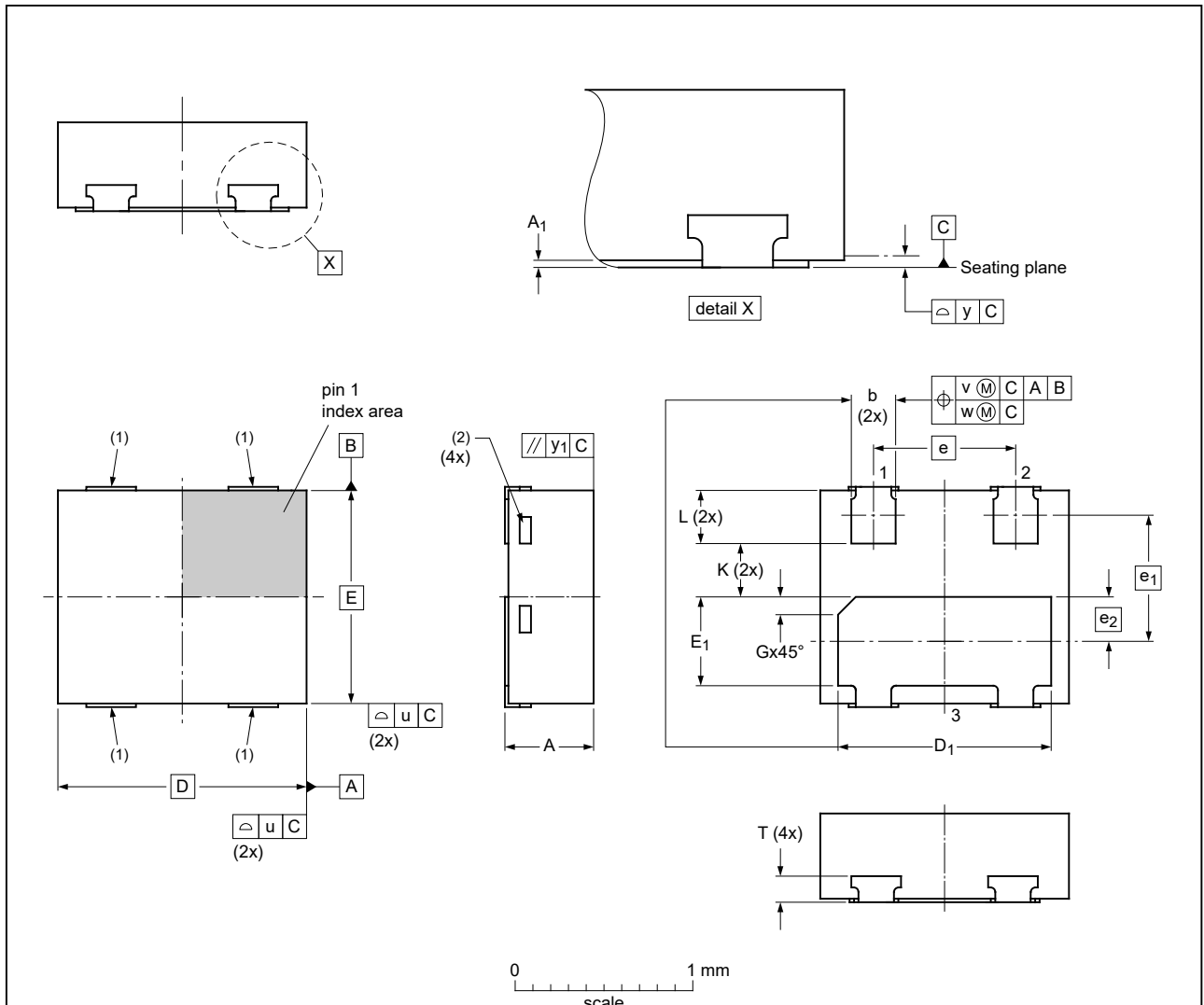
11.1. Quality information

This product has been qualified in accordance with the Automotive Electronics Council (AEC) standard *Q101 - Stress test qualification for discrete semiconductors*, and is suitable for use in automotive applications.

12. Package outline

DFN1412D-3: plastic, leadless extremely thin small outline package with side-wettable flanks (SWF); 3 terminals; 0.8 mm pitch; 1.4 mm x 1.2 mm x 0.48 mm body

SOT8009



Dimensions (mm are the original dimensions)

Unit	A	A ₁	b	D	D ₁	E	E ₁	e	e ₁	e ₂	G	K	L	T	u	v	w	y	y ₁
max	0.50	0.04	0.30	1.25	0.55								0.35	0.22					
nom	0.47		0.25	1.4	1.20	1.2	0.50	0.8	0.71	0.26	0.09		0.30	0.16	0.05	0.1	0.05	0.05	0.05
min	0.44		0.22	1.17	0.47						(ref)	0.25	0.27	0.10					

Note

- 1. Side Wettable Flank, protrusion max. 0.02 mm.
 - 2. Visible depend upon used manufacturing technology.
- Dimension A and T are including plating thickness.

sot8009_po

Outline version	References				European projection	Issue date
	IEC	JEDEC	JEITA			
SOT8009		MO-340CA				19-12-04 19-12-06

Fig. 16. Package outline SOT8009 (DFN1412D-3)

13. Soldering

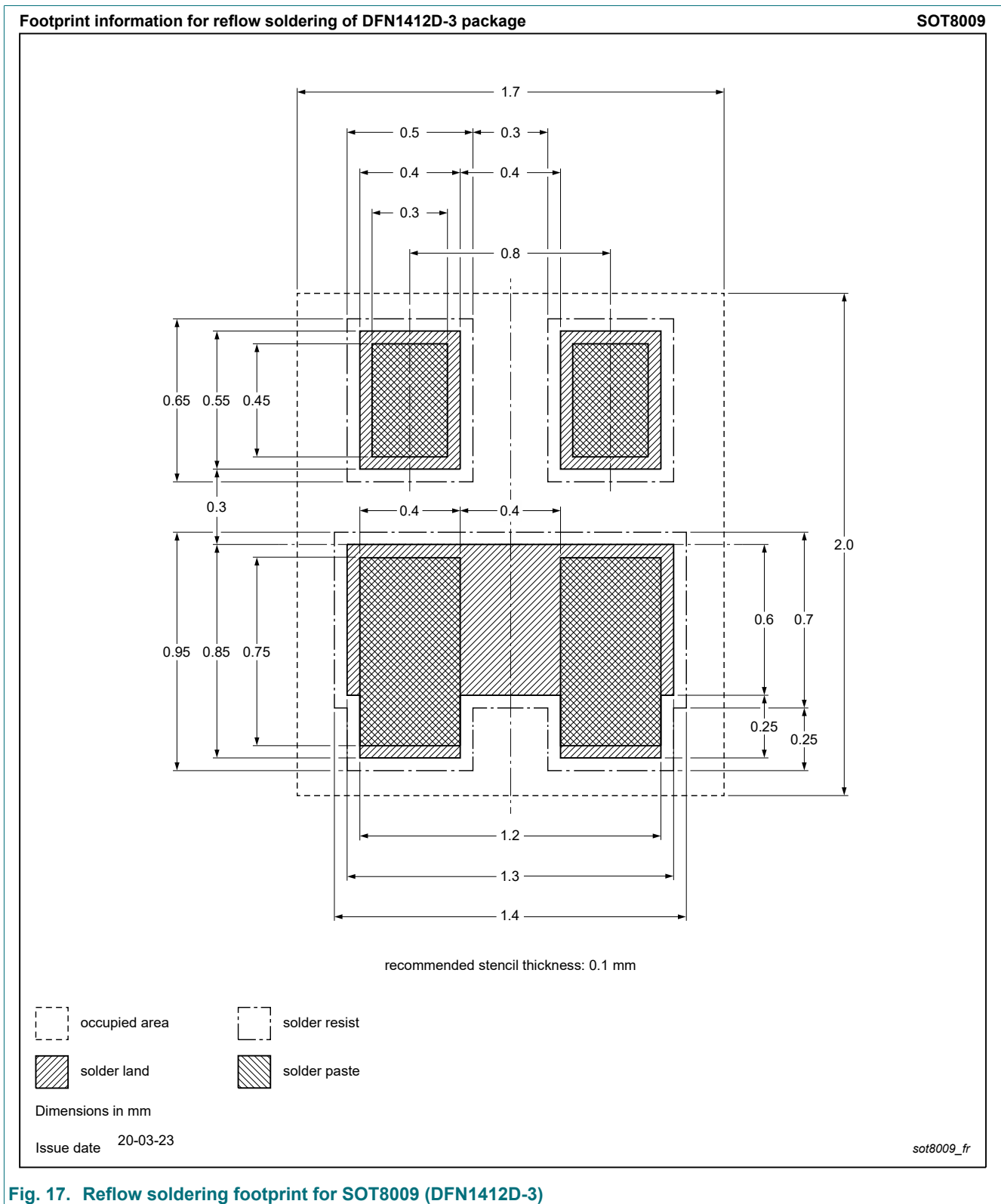


Fig. 17. Reflow soldering footprint for SOT8009 (DFN1412D-3)

14. Revision history

Table 9. Revision history

Data sheet ID	Release date	Data sheet status	Change notice	Supersedes
BC817QC_SER v.2	20201028	Product data sheet	-	BC817QC_SER v.1
Modifications:	• Thermal characteristics: $R_{th(j-sp)}$ removed			
BC817QC_SER v.1	20200512	Product data sheet	-	-

15. Legal information

Data sheet status

Document status [1][2]	Product status [3]	Definition
Objective [short] data sheet	Development	This document contains data from the objective specification for product development.
Preliminary [short] data sheet	Qualification	This document contains data from the preliminary specification.
Product [short] data sheet	Production	This document contains the product specification.

- [1] Please consult the most recently issued document before initiating or completing a design.
- [2] The term 'short data sheet' is explained in section "Definitions".
- [3] The product status of device(s) described in this document may have changed since this document was published and may differ in case of multiple devices. The latest product status information is available on the internet at <https://www.nexperia.com>.

Definitions

Draft — The document is a draft version only. The content is still under internal review and subject to formal approval, which may result in modifications or additions. Nexperia does not give any representations or warranties as to the accuracy or completeness of information included herein and shall have no liability for the consequences of use of such information.

Short data sheet — A short data sheet is an extract from a full data sheet with the same product type number(s) and title. A short data sheet is intended for quick reference only and should not be relied upon to contain detailed and full information. For detailed and full information see the relevant full data sheet, which is available on request via the local Nexperia sales office. In case of any inconsistency or conflict with the short data sheet, the full data sheet shall prevail.

Product specification — The information and data provided in a Product data sheet shall define the specification of the product as agreed between Nexperia and its customer, unless Nexperia and customer have explicitly agreed otherwise in writing. In no event however, shall an agreement be valid in which the Nexperia product is deemed to offer functions and qualities beyond those described in the Product data sheet.

Disclaimers

Limited warranty and liability — Information in this document is believed to be accurate and reliable. However, Nexperia does not give any representations or warranties, expressed or implied, as to the accuracy or completeness of such information and shall have no liability for the consequences of use of such information. Nexperia takes no responsibility for the content in this document if provided by an information source outside of Nexperia.

In no event shall Nexperia be liable for any indirect, incidental, punitive, special or consequential damages (including - without limitation - lost profits, lost savings, business interruption, costs related to the removal or replacement of any products or rework charges) whether or not such damages are based on tort (including negligence), warranty, breach of contract or any other legal theory.

Notwithstanding any damages that customer might incur for any reason whatsoever, Nexperia's aggregate and cumulative liability towards customer for the products described herein shall be limited in accordance with the Terms and conditions of commercial sale of Nexperia.

Right to make changes — Nexperia reserves the right to make changes to information published in this document, including without limitation specifications and product descriptions, at any time and without notice. This document supersedes and replaces all information supplied prior to the publication hereof.

Suitability for use in automotive applications — This Nexperia product has been qualified for use in automotive applications. Unless otherwise agreed in writing, the product is not designed, authorized or warranted to be suitable for use in life support, life-critical or safety-critical systems or

equipment, nor in applications where failure or malfunction of an Nexperia product can reasonably be expected to result in personal injury, death or severe property or environmental damage. Nexperia and its suppliers accept no liability for inclusion and/or use of Nexperia products in such equipment or applications and therefore such inclusion and/or use is at the customer's own risk.

Quick reference data — The Quick reference data is an extract of the product data given in the Limiting values and Characteristics sections of this document, and as such is not complete, exhaustive or legally binding.

Applications — Applications that are described herein for any of these products are for illustrative purposes only. Nexperia makes no representation or warranty that such applications will be suitable for the specified use without further testing or modification.

Customers are responsible for the design and operation of their applications and products using Nexperia products, and Nexperia accepts no liability for any assistance with applications or customer product design. It is customer's sole responsibility to determine whether the Nexperia product is suitable and fit for the customer's applications and products planned, as well as for the planned application and use of customer's third party customer(s). Customers should provide appropriate design and operating safeguards to minimize the risks associated with their applications and products.

Nexperia does not accept any liability related to any default, damage, costs or problem which is based on any weakness or default in the customer's applications or products, or the application or use by customer's third party customer(s). Customer is responsible for doing all necessary testing for the customer's applications and products using Nexperia products in order to avoid a default of the applications and the products or of the application or use by customer's third party customer(s). Nexperia does not accept any liability in this respect.

Limiting values — Stress above one or more limiting values (as defined in the Absolute Maximum Ratings System of IEC 60134) will cause permanent damage to the device. Limiting values are stress ratings only and (proper) operation of the device at these or any other conditions above those given in the Recommended operating conditions section (if present) or the Characteristics sections of this document is not warranted. Constant or repeated exposure to limiting values will permanently and irreversibly affect the quality and reliability of the device.

Terms and conditions of commercial sale — Nexperia products are sold subject to the general terms and conditions of commercial sale, as published at <http://www.nexperia.com/profile/terms>, unless otherwise agreed in a valid written individual agreement. In case an individual agreement is concluded only the terms and conditions of the respective agreement shall apply. Nexperia hereby expressly objects to applying the customer's general terms and conditions with regard to the purchase of Nexperia products by customer.

No offer to sell or license — Nothing in this document may be interpreted or construed as an offer to sell products that is open for acceptance or the grant, conveyance or implication of any license under any copyrights, patents or other industrial or intellectual property rights.

Export control — This document as well as the item(s) described herein may be subject to export control regulations. Export might require a prior authorization from competent authorities.

Translations — A non-English (translated) version of a document is for reference only. The English version shall prevail in case of any discrepancy between the translated and English versions.

Trademarks

Notice: All referenced brands, product names, service names and trademarks are the property of their respective owners.

Contents

1. General description	1
2. Features and benefits	1
3. Applications	1
4. Quick reference data	1
5. Pinning information	2
6. Ordering information	2
7. Marking	2
8. Limiting values	3
9. Thermal characteristics	4
10. Characteristics	5
11. Test information	9
11.1. Quality information.....	9
12. Package outline	10
13. Soldering	11
14. Revision history	12
15. Legal information	13

© Nexperia B.V. 2020. All rights reserved

For more information, please visit: <http://www.nexperia.com>

For sales office addresses, please send an email to: salesaddresses@nexperia.com

Date of release: 28 October 2020

OUR CERTIFICATE

DiGi provide top-quality products and perfect service for customer worldwide through standardization, technological innovation and continuous improvement. DiGi through third-party certification, we stricly control the quality of products and services. Welcome your RFQ to

Email: Info@DiGi-Electronics.com



Tel: +00 852-30501935

RFQ Email: Info@DiGi-Electronics.com

DiGi is a global authorized distributor of electronic components.