

AMDLA1707S-150MT Datasheet

www.digi-electronics.com



<https://www.DiGi-Electronics.com>

DiGi Electronics Part Number	AMDLA1707S-150MT-DG
Manufacturer	Abracon LLC
Manufacturer Product Number	AMDLA1707S-150MT
Description	FIXED IND 15UH 16A 15.5MOHM SMD
Detailed Description	15 μ H Shielded Molded Inductor 16 A 15.5mOhm Max Nonstandard



Tel: +00 852-30501935

RFQ Email: Info@DiGi-Electronics.com

DiGi is a global authorized distributor of electronic components.

Purchase and inquiry

Manufacturer Product Number:

AMDLA1707S-150MT

Series:

AMDLA1707S

Type:

Molded

Inductance:

15 μ H

Current Rating (Amps):

16 A

Shielding:

Shielded

Q @ Freq:

-

Ratings:

-

Inductance Frequency - Test:

100 kHz

Mounting Type:

Surface Mount

Supplier Device Package:

-

Height - Seated (Max):

0.276" (7.00mm)

Manufacturer:

Abracon LLC

Product Status:

Active

Material - Core:

Metal

Tolerance:

\pm 20%

Current - Saturation (Isat):

16A

DC Resistance (DCR):

15.5mOhm Max

Frequency - Self Resonant:

-

Operating Temperature:

-55°C ~ 155°C

Features:

-

Package / Case:

Nonstandard

Size / Dimension:

0.701" L x 0.665" W (17.80mm x 16.90mm)

Environmental & Export classification

RoHS Status:

ROHS3 Compliant

REACH Status:

REACH Unaffected

HTSUS:

8504.50.8000

Moisture Sensitivity Level (MSL):

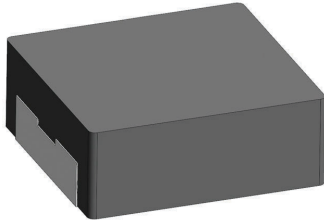
1 (Unlimited)

ECCN:

EAR99

Request Samples

Check Inventory



FEATURES

- Shielded construction
- Soft saturation
- Low DCR per cubic mm
- Designed for switching frequencies between 100KHz-2MHz
- Automotive option available upon request



ELECTRICAL SPECIFICATIONS @ 25°C

PART NUMBER*	INDUCTANCE (uH)	TOLERANCE (%)	IRMS (A)	ISAT (A)	DC RESISTANCE (mΩ)		TYPE
					TYP	MAX	
AMDLA1707S-R47MT	0.47	20	60	110	0.7	0.9	Lead Frame
AMDLA1707S-R56MT	0.56	20	56	80	0.81	0.97	Lead Frame
AMDLA1707S-1R0MT	1.0	20	46	50	1.6	1.3	Lead Frame
AMDLA1707S-1R5MT	1.5	20	39	46	1.5	1.8	Lead Frame
AMDLA1707S-1R8MT	1.8	20	35	40	1.7	2.0	Lead Frame
AMDLA1707S-2R2MT	2.2	20	32	35	1.8	2.2	Lead Frame
AMDLA1707S-3R3MT	3.3	20	30	32	2.7	3.3	Lead Frame
AMDLA1707S-4R7MT	4.7	20	28	29	3.7	4.5	Lead Frame
AMDLA1707S-6R8MT	6.8	20	24	25	6.0	7.2	Lead Frame
AMDLA1707S-100MT	10	20	21	22	9.2	10.6	Lead Frame
AMDLA1707S-150MT	15	20	16	16	12.8	15.5	Lead Frame
AMDLA1707S-220MT	22	20	13.5	13.5	20.5	24	Lead Frame
AMDLA1707S-330MT	33	20	12	12	32.0	37	Lead Frame
AMDLA1707S-470MT	47	20	9.5	9.8	40.0	47	Lead Frame
AMDLA1707S-820MT	82	20	6.5	8.0	69.0	83	Lead Frame

* Please refer to Part Identification section

Test Conditions

Inductance: 100 kHz, 1V, 0 A dc
 Humidity Range: 85 ± 2% RH
 Temperature Rise Current: Current measured at Δ T of 40°C
 Saturation Current: Current measured at Δ L of 30%

PART BUILDER



1. Tolerance: M = 20%

2. Packaging: B = Bulk
 T = Tape and Reel (200pcs/reel)

*Refer to Electrical Specification table

GENERAL SPECIFICATIONS

Operating Temperature:
 -55°C to +155°C with (40°C rise) Irms current.

Maximum Part Temperature: +155°C
Components Storage Temperature:
 -55°C to +125°C

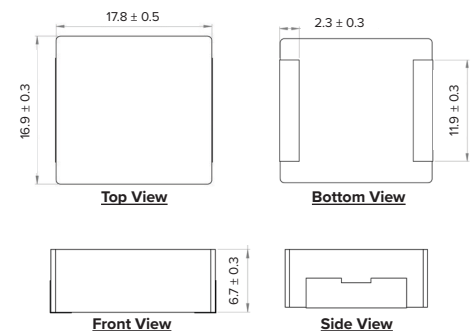
Tape and Reel Packaging Temperature: -55°C to +80°C

MSL: Level 1

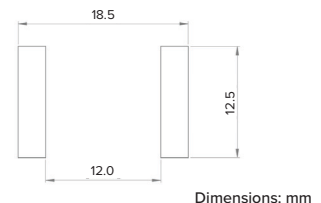
MATERIALS

Core: Metal Alloy
Wire: Copper
Terminal: Tin Plating
Ink: Black

PRODUCT DIMENSIONS

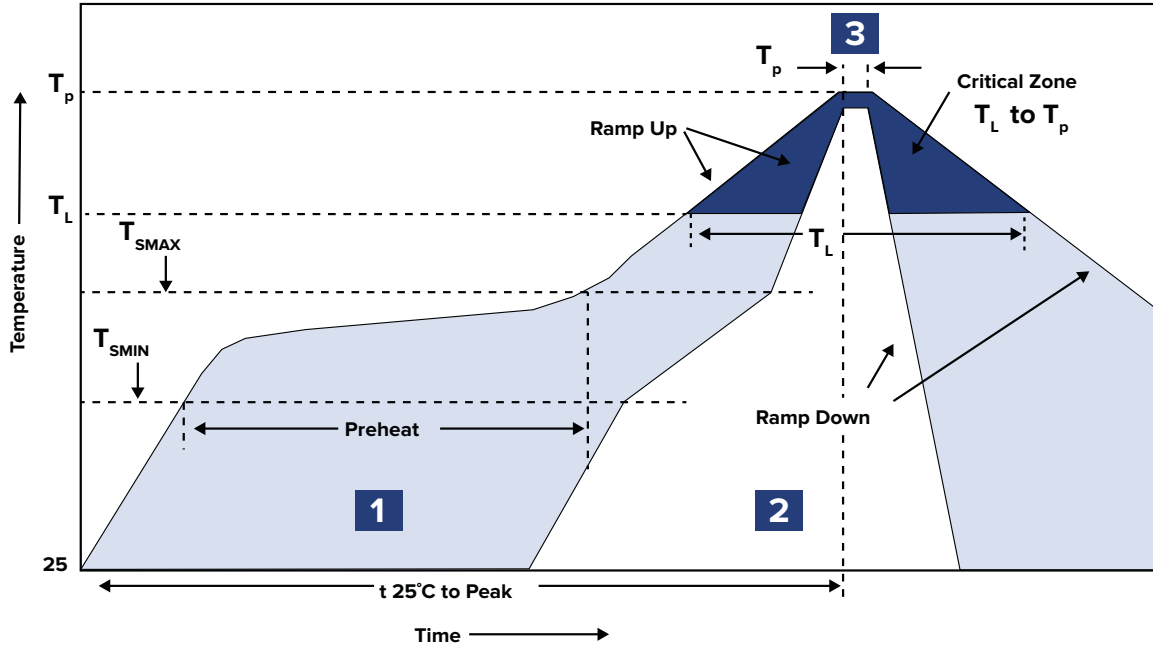


RECOMMENDED LANDING PATTERN



Dimensions: mm

RECOMMENDED REFLOW PROFILE



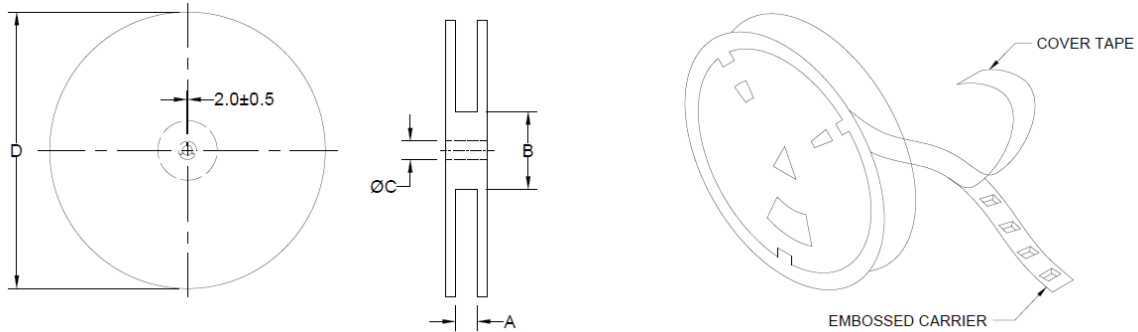
ZONE	DESCRIPTION	TEMPERATURE	TIMES
1	Preheat	$T_{smin} \sim T_{smax}$ 150°C ~ 200°C	60 ~ 180 sec.
2	Reflow	T_L 217°C	60 ~ 150 sec.
3	Peak Heat	T_p 260°C	10 sec. MAX

AMDLA1707S MOLDED INDUCTOR

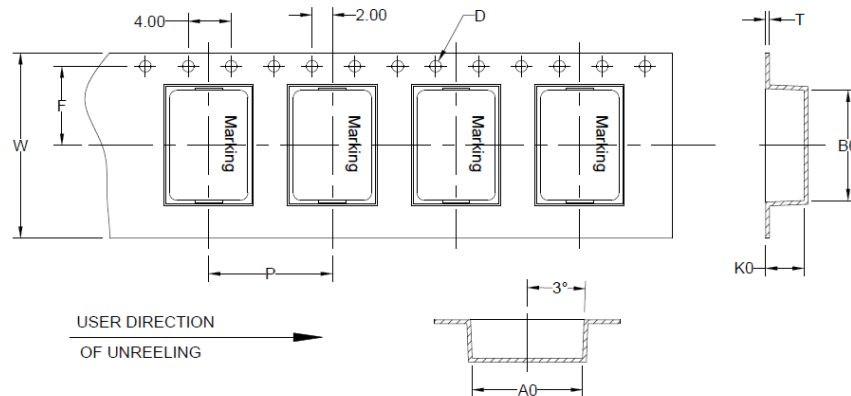


PACKAGING

Tape and Reel: 200
 Units per Carton: 800
 T&R per Carton: 4
 Weight per Carton: 12.1 kg
 Weight per Unit: 10.6 g
 Carton Dimensions: 410 x 325 x 415 mm



TYPE	A	B	C	D
13" x 32 mm	32.4 +2/-0	100.0 ± 2.0	13.5 +0.5/-0.2	330.0



B ₀	A ₀	K ₀	P	W	F	T	D
18.5 ± 0.1	17.5 ± 0.1	7.5 ± 0.1	24.0 ± 0.1	32.0 ± 0.3	14.2 ± 0.1	0.5 ± 0.05	1.5 ± 0.1

Dimensions: mm

This product is commercial off-the-shelf (COTS) and not specifically designed for automotive, military, aviation, aerospace, implantable, life-dependent medical or safety applications. This product is not recommended for use in any application requiring high reliability in which component failure could result in loss of life and/or property damage without prior written approval from Abracon. Specifications are subject to change without notice. Contact Abracon for more information.



Headquarters:
 5101 Hidden Creek Ln Spicewood TX 78669
 Phone: 512-371-6159 | Fax: 512-351-8858

Revised 05/01/20

OUR CERTIFICATE

DiGi provide top-quality products and perfect service for customer worldwide through standardization, technological innovation and continuous improvement. DiGi through third-party certification, we strictly control the quality of products and services. Welcome your RFQ to

Email: Info@DiGi-Electronics.com



Tel: +00 852-30501935

RFQ Email: Info@DiGi-Electronics.com

DiGi is a global authorized distributor of electronic components.