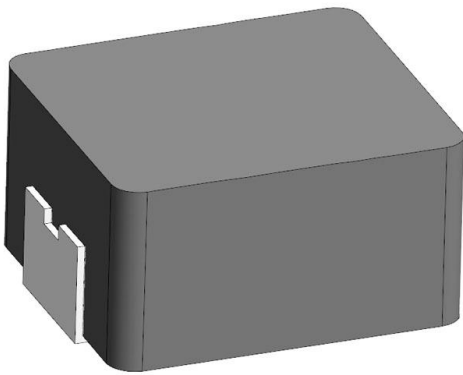


AMDLA3020S-R47MT Datasheet

www.digi-electronics.com



<https://www.DiGi-Electronics.com>

DiGi Electronics Part Number	AMDLA3020S-R47MT-DG
Manufacturer	Abracon LLC
Manufacturer Product Number	AMDLA3020S-R47MT
Description	FIXED IND 470NH 8A 18 MOHM SMD
Detailed Description	470 nH Shielded Molded Inductor 8 A 18mOhm Max Nonstandard



Tel: +00 852-30501935

RFQ Email: Info@DiGi-Electronics.com

DiGi is a global authorized distributor of electronic components.

Purchase and inquiry

Manufacturer Product Number:

AMDLA3020S-R47MT

Series:

AMDLA3020S

Type:

Molded

Inductance:

470 nH

Current Rating (Amps):

8 A

Shielding:

Shielded

Q @ Freq:

-

Ratings:

-

Inductance Frequency - Test:

1 MHz

Mounting Type:

Surface Mount

Supplier Device Package:

-

Height - Seated (Max):

0.079" (2.00mm)

Manufacturer:

Abracon LLC

Product Status:

Active

Material - Core:

Metal

Tolerance:

±20%

Current - Saturation (Isat):

12A

DC Resistance (DCR):

18mOhm Max

Frequency - Self Resonant:

-

Operating Temperature:

-55°C ~ 125°C

Features:

-

Package / Case:

Nonstandard

Size / Dimension:

0.134" L x 0.118" W (3.40mm x 3.00mm)

Environmental & Export classification

RoHS Status:

ROHS3 Compliant

REACH Status:

REACH Unaffected

HTSUS:

8504.50.8000

Moisture Sensitivity Level (MSL):

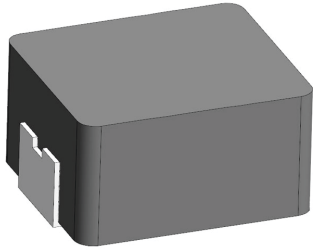
1 (Unlimited)

ECCN:

EAR99

Request Samples

Check Inventory



FEATURES

- Shielded construction
- Soft saturation
- Low DCR per cubic mm
- Designed for switching frequencies between 100kHz-5MHz
- Automotive option available upon request



ELECTRICAL SPECIFICATIONS @ 25°C

PART NUMBER*	INDUCTANCE (uH)	TOLERANCE (%)	IRMS (A)	ISAT (A)	DC RESISTANCE (mΩ)		TYPE
					TYP	MAX	
AMDLA3020S-R22MT	0.22	20	10.0	16	8	10	Lead Frame
AMDLA3020S-R33MT	0.33	20	9.0	14	12	15	Lead Frame
AMDLA3020S-R47MT	0.47	20	8.0	12	15	18	Lead Frame
AMDLA3020S-R68MT	0.68	20	7.0	10	22	26	Lead Frame
AMDLA3020S-1R0MT	1.0	20	5.0	8.0	25	30	Lead Frame
AMDLA3020S-1R5MT	1.5	20	4.2	6.0	34	39	Lead Frame
AMDLA3020S-2R2MT	2.2	20	3.3	4.8	60	69	Lead Frame
AMDLA3020S-3R3MT	3.3	20	2.8	4.0	70	83	Lead Frame
AMDLA3020S-4R7MT	4.7	20	2.4	3.5	120	144	Lead Frame
AMDLA3020S-6R8MT	6.8	20	1.6	3.0	153	184	Lead Frame
AMDLA3020S-100MT	10.0	20	1.3	1.8	224	260	Lead Frame

* Please refer to Part Identification section

Test Conditions

Inductance: 1 MHz, 1 V, 0 Adc
 Humidity Range: 65% RH
 Temperature Rise Current: Current measured at Δ T of 40°C
 Saturation Current: Current measured at Δ L of 30%

GENERAL SPECIFICATIONS

Operating Temperature:
 -55°C to +125°C with (40°C rise) Irms current.

Maximum Part Temperature: +125°C
Components Storage Temperature:
 -55°C to +125°C

Tape and Reel Packaging
Temperature: -20°C to +65°C

MSL: Level 1

MATERIALS

Core: Metal Alloy
Wire: Copper
Terminal: Tin Plating
Ink: Black

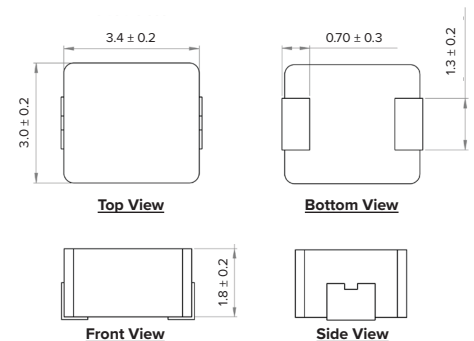
PART BUILDER



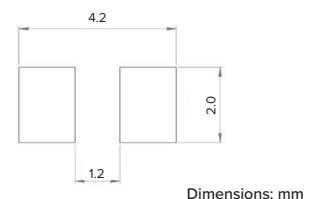
- 1. Tolerance:** M = 20%
- 2. Packaging:** B = Bulk
 T = Tape and Reel (3,000pcs/reel)

*Refer to Electrical Specification table

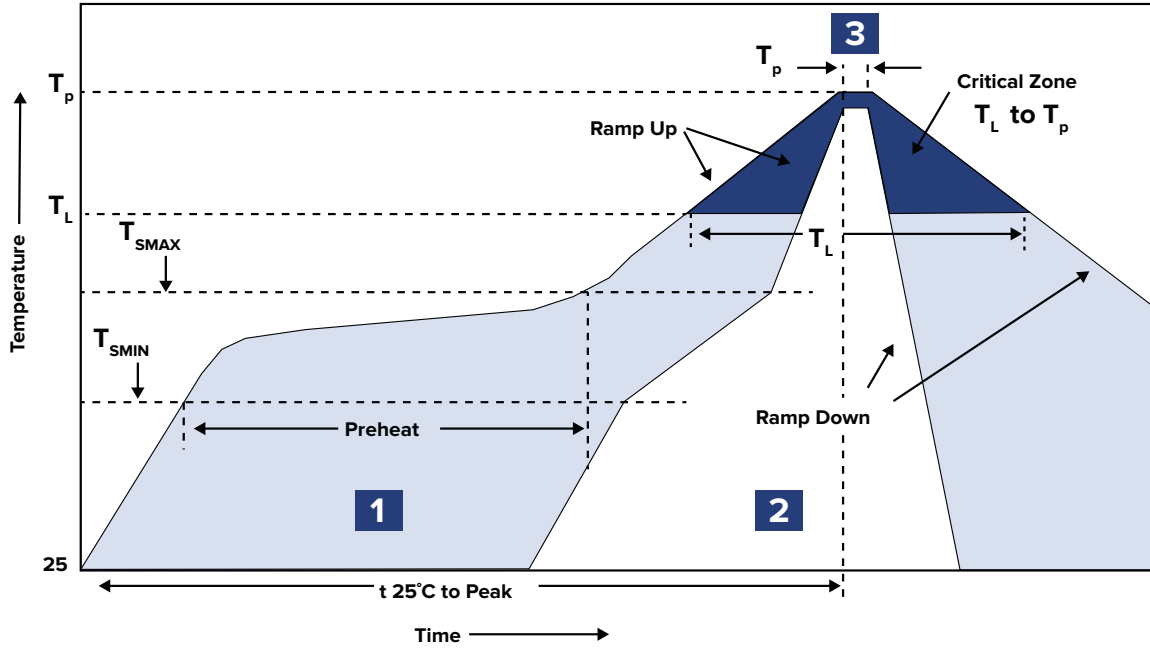
PRODUCT DIMENSIONS



RECOMMENDED LANDING PATTERN



RECOMMENDED REFLOW PROFILE



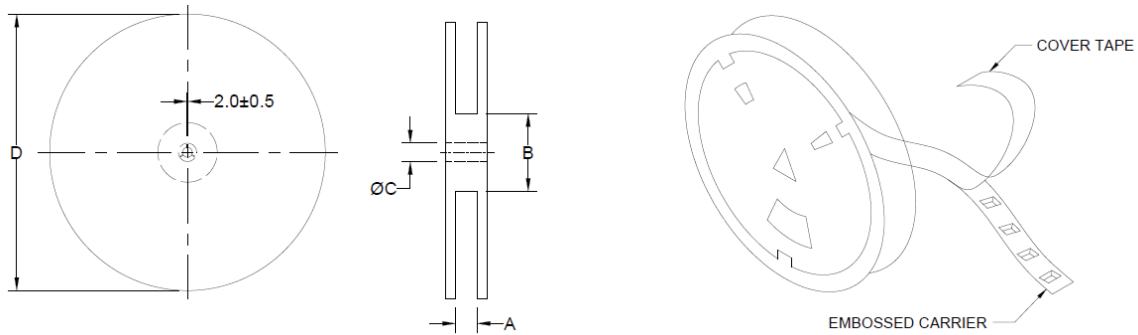
ZONE	DESCRIPTION	TEMPERATURE	TIMES
1	Preheat	$T_{smin} \sim T_{smax}$ 150°C ~ 180°C	60 ~ 120 sec.
2	Reflow	T_L 230°C	30 ~ 40 sec.
3	Peak Heat	T_p 250°C+0/-5°C	10 sec. MAX

AMDLA3020S MOLDED INDUCTOR

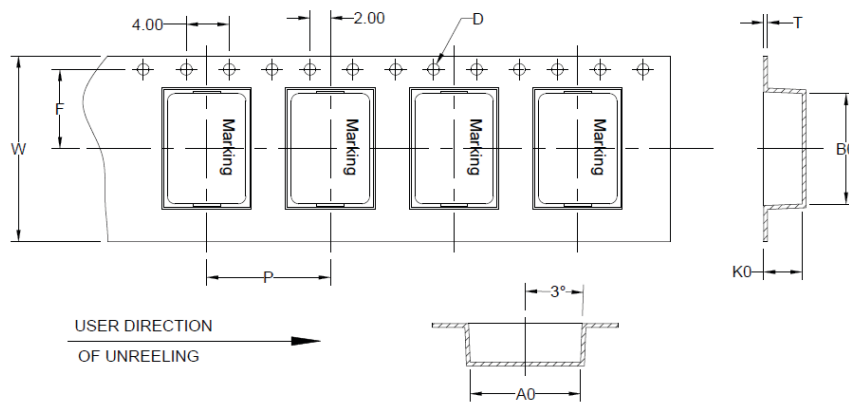


PACKAGING

Tape and Reel: 3,000
 Units per Carton: 24,000
 T&R per Carton: 8
 Weight per Carton: 13.5 kg
 Weight per Unit: 0.45 g
 Carton Dimensions: 360 x 360 x 400 mm



TYPE	A	B	C	D
13" x 12 mm	12.4 +2/-0	100.0 ± 0.5	13.0 +0.5/-0.2	330.0



B ₀	A ₀	K ₀	P	W	F	T	D
3.8 ± 0.1	3.4 ± 0.1	2.3 ± 0.1	8.0 ± 0.1	12.0 ± 0.3	5.5 ± 0.1	0.3 ± 0.05	1.5

Dimensions: mm

This product is commercial off-the-shelf (COTS) and not specifically designed for automotive, military, aviation, aerospace, implantable, life-dependent medical or safety applications. This product is not recommended for use in any application requiring high reliability in which component failure could result in loss of life and/or property damage without prior written approval from Abracon. Specifications are subject to change without notice. Contact Abracon for more information.



Headquarters:
 5101 Hidden Creek Ln Spicewood TX 78669
 Phone: 512-371-6159 | Fax: 512-351-8858

Revised 09/16/19

OUR CERTIFICATE

DiGi provide top-quality products and perfect service for customer worldwide through standardization, technological innovation and continuous improvement. DiGi through third-party certification, we stricly control the quality of products and services. Welcome your RFQ to

Email: Info@DiGi-Electronics.com



Tel: +00 852-30501935

RFQ Email: Info@DiGi-Electronics.com

DiGi is a global authorized distributor of electronic components.