

ELJ-FC5R6KF Datasheet

www.digi-electronics.com



<https://www.DiGi-Electronics.com>

| | |
|------------------------------|--|
| DiGi Electronics Part Number | ELJ-FC5R6KF-DG |
| Manufacturer | Panasonic Electronic Components |
| Manufacturer Product Number | ELJ-FC5R6KF |
| Description | FIXED IND 5.6UH 120MA 1.75OHM SM |
| Detailed Description | 5.6 μ H Unshielded Wirewound Inductor 120 mA 1.7 50hm Max 1008 (2520 Metric) |



Tel: +00 852-30501935

RFQ Email: Info@DiGi-Electronics.com

DiGi is a global authorized distributor of electronic components.

Purchase and inquiry

Manufacturer Product Number:

ELJ-FC5R6KF

Series:

FC

Type:

Wirewound

Inductance:

5.6 μ H

Current Rating (Amps):

120 mA

Shielding:

Unshielded

Q @ Freq:

25 @ 7.96MHz

Ratings:

-

Inductance Frequency - Test:

7.96 MHz

Package / Case:

1008 (2520 Metric)

Size / Dimension:

0.098" L x 0.079" W (2.50mm x 2.00mm)

Base Product Number:

ELJ-FC

Manufacturer:

Panasonic Electronic Components

Product Status:

Obsolete

Material - Core:

-

Tolerance:

\pm 10%

Current - Saturation (Isat):

-

DC Resistance (DCR):

1.750hm Max

Frequency - Self Resonant:

50MHz

Operating Temperature:

-20°C ~ 85°C

Mounting Type:

Surface Mount

Supplier Device Package:

1008 (2520 Metric)

Height - Seated (Max):

0.071" (1.80mm)

Environmental & Export classification

Moisture Sensitivity Level (MSL):

1 (Unlimited)

HTSUS:

8504.50.8000

ECCN:

EAR99

3. General Use FC, FA, FB



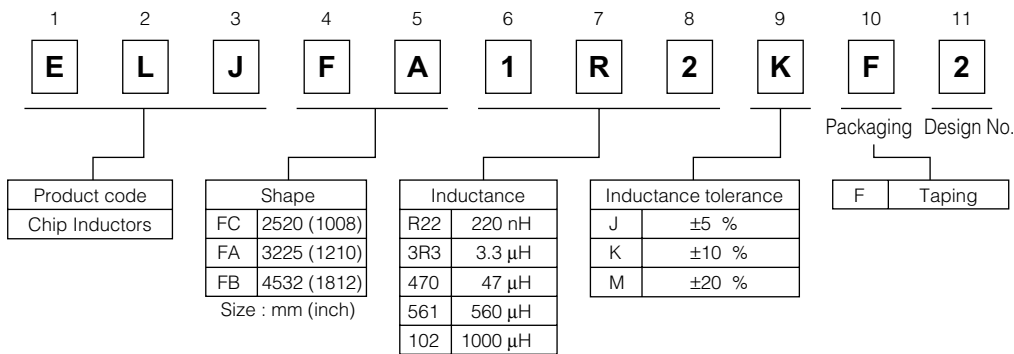
■ **Features**

- General use wire wound, resin molded chip inductor.
- Capable of being Re-flow or flow soldered.
- Wide line-up from 2520 to 4532 case sizes.
- Good for mounting.
- RoHS compliant

■ **Recommended Applications**

- AV equipment, Wireless communication equipment and various types of general electronic equipment.

■ **Explanation of Part Numbers**



■ **Storage Conditions**

- Package : Normal temperature (−5 to 35 °C), normal humidity (85 %RH max.), shall not be exposed to direct sunlight and harmful gases and care should be taken so as not to cause dew.
- Operating Temperature : −20 to +85 °C

■ **Storage Period**

- Solderability may be reduced due to the conditions of high temperature and high humidity which causes the oxidation of tin-plated terminals. Even if storage conditions are within specified limits, solderability may be reduced with the passage of time. Therefore, please control the storage conditions and try to use the product within 6 months of receipt.

■ **Packaging Methods** Please see Page 127

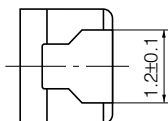
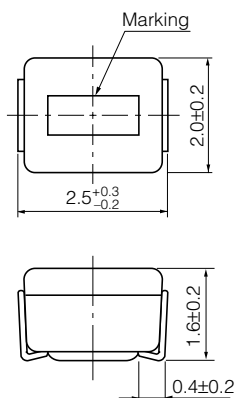
■ **Soldering Conditions** Please see Page 128

■ **Safety Precautions** Please see Page 129

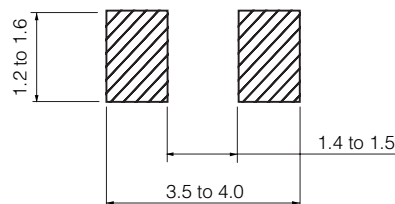
Design and specifications are each subject to change without notice. Ask factory for the current technical specifications before purchase and/or use. Should a safety concern arise regarding this product, please be sure to contact us immediately.

■ FC Type 2520 (1008)

● Dimensions in mm (not to scale)



● Recommended Land Pattern in mm (not to scale)



■ Standard Packing Quantity

● 2000 pcs./Reel

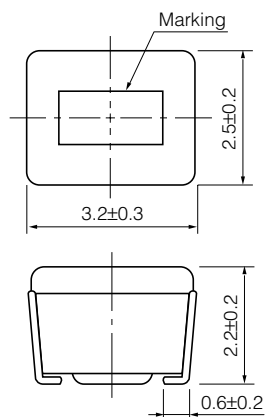
■ Standard Parts

| Part No. | Inductance | | | Q | | SRF *1 (MHz) min. | R _{DC} *2 (Ω) max. | DC Current (mA) max. |
|------------|------------|------------------------------|------------------|------|------------------|----------------------|--------------------------------|-------------------------|
| | (μH) | Tolerance (%) | Test Freq. (MHz) | min. | Test Freq. (MHz) | | | |
| ELJFCR22□F | 0.22 | M : ±20 % or K : ±10 % | 25.2 | 25 | 25.2 | 230 | 0.70 | 190 |
| ELJFCR27□F | 0.27 | | | | | 210 | 0.75 | 180 |
| ELJFCR33□F | 0.33 | | | | | 190 | 0.85 | 170 |
| ELJFCR39□F | 0.39 | | | | | 175 | 0.95 | 160 |
| ELJFCR47□F | 0.47 | | | | | 160 | 1.00 | 155 |
| ELJFCR56□F | 0.56 | | | | | 155 | 1.10 | 150 |
| ELJFCR68□F | 0.68 | | | | | 135 | 1.25 | 140 |
| ELJFCR82□F | 0.82 | | | | | 125 | 1.40 | 130 |
| ELJFC1R0□F | 1.0 | K : ±10 % or J : ±5 % | 7.96 | 25 | 7.96 | 115 | 0.65 | 195 |
| ELJFC1R2□F | 1.2 | | | | | 100 | 0.75 | 180 |
| ELJFC1R5□F | 1.5 | | | | | 90 | 0.85 | 170 |
| ELJFC1R8□F | 1.8 | | | | | 85 | 0.95 | 160 |
| ELJFC2R2□F | 2.2 | | | | | 80 | 1.05 | 155 |
| ELJFC2R7□F | 2.7 | | | | | 75 | 1.20 | 145 |
| ELJFC3R3□F | 3.3 | | | | | 65 | 1.30 | 135 |
| ELJFC3R9□F | 3.9 | | | | | 60 | 1.40 | 130 |
| ELJFC4R7□F | 4.7 | | | | | 55 | 1.55 | 125 |
| ELJFC5R6□F | 5.6 | | | | | 50 | 1.75 | 120 |
| ELJFC6R8□F | 6.8 | | | | | 45 | 1.95 | 115 |
| ELJFC8R2□F | 8.2 | | | | | 40 | 2.20 | 105 |
| ELJFC100□F | 10 | | | | | 32 | 3.70 | 80 |
| ELJFC120□F | 12 | | | | | 30 | 4.10 | 75 |
| ELJFC150□F | 15 | | | | | 28 | 5.00 | 70 |
| ELJFC180□F | 18 | | | | | 25 | 5.40 | 65 |
| ELJFC220□F | 22 | 22 | 6.00 | 60 | | | | |
| ELJFC270□F | 27 | 21 | 6.30 | 115 | | | | |
| ELJFC330□F | 33 | 20 | 7.10 | 110 | | | | |
| ELJFC390□F | 39 | 18 | 9.50 | 90 | | | | |
| ELJFC470□F | 47 | 17 | 11.0 | 80 | | | | |
| ELJFC560□F | 56 | 16 | 12.1 | 75 | | | | |
| ELJFC680□F | 68 | 15 | 16.6 | 70 | | | | |
| ELJFC820□F | 82 | 13 | 19.0 | 65 | | | | |
| ELJFC101□F | 100 | 12 | 21.0 | 60 | | | | |
| | | | 0.796 | 15 | 0.796 | | | |

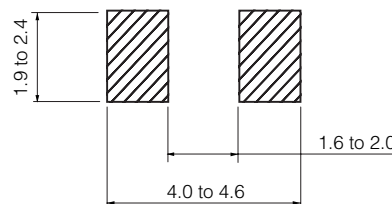
□ : Symbol of Tolerance *1 : Self Resonant Frequency *2 : DC Resistance

■ FA Type 3225 (1210)

● Dimensions in mm (not to scale)



● Recommended Land Pattern in mm (not to scale)



■ Standard Packing Quantity

● 2000 pcs./Reel

■ Standard Parts

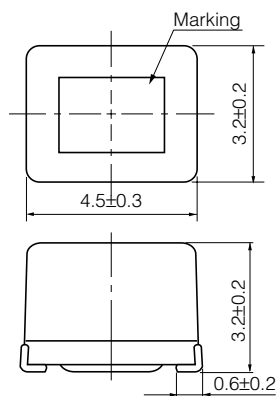
| Part No. | Inductance | | | Q | | SRF *1 (MHz) min. | R _{DC} *2 (Ω) max. | DC Current (mA) max. |
|-------------|------------|------------------------------|------------------|------|------------------|----------------------|--------------------------------|-------------------------|
| | (μH) | Tolerance (%) | Test Freq. (MHz) | min. | Test Freq. (MHz) | | | |
| ELJFAR22□F2 | 0.22 | M : ±20 % or K : ±10 % | 25.2 | 25 | 25.2 | 230 | 0.29 | 360 |
| ELJFAR27□F2 | 0.27 | | | | | 210 | 0.32 | 345 |
| ELJFAR33□F2 | 0.33 | | | | | 190 | 0.35 | 330 |
| ELJFAR39□F2 | 0.39 | | | | | 175 | 0.39 | 305 |
| ELJFAR47□F2 | 0.47 | | | | | 160 | 0.44 | 290 |
| ELJFAR56□F2 | 0.56 | | | | | 150 | 0.49 | 275 |
| ELJFAR68□F2 | 0.68 | | | | | 135 | 0.55 | 260 |
| ELJFAR82□F2 | 0.82 | | | | | 125 | 0.61 | 245 |
| ELJFA1R0□F2 | 1.0 | K : ±10 % or J : ±5 % | 7.96 | 30 | 7.96 | 115 | 0.69 | 230 |
| ELJFA1R2□F2 | 1.2 | | | | | 100 | 0.75 | 215 |
| ELJFA1R5□F | 1.5 | | | | | 90 | 0.75 | 210 |
| ELJFA1R8□F | 1.8 | | | | | 85 | 0.82 | 200 |
| ELJFA2R2□F | 2.2 | | | | | 80 | 0.95 | 190 |
| ELJFA2R7□F | 2.7 | | | | | 75 | 1.1 | 180 |
| ELJFA3R3□F | 3.3 | | | | | 65 | 1.2 | 180 |
| ELJFA3R9□F | 3.9 | | | | | 60 | 1.3 | 175 |
| ELJFA4R7□F | 4.7 | | | | | 55 | 1.5 | 165 |
| ELJFA5R6□F | 5.6 | | | | | 50 | 1.6 | 160 |
| ELJFA6R8□F | 6.8 | | | | | 45 | 1.8 | 150 |
| ELJFA8R2□F | 8.2 | | | | | 40 | 2.0 | 140 |
| ELJFA100□F | 10 | | | | | 36 | 2.1 | 140 |
| ELJFA120□F | 12 | | | | | 33 | 2.5 | 125 |
| ELJFA150□F | 15 | | | | | 30 | 2.8 | 120 |
| ELJFA180□F | 18 | | | | | 27 | 3.3 | 110 |
| ELJFA220□F | 22 | | | | | 25 | 3.7 | 105 |
| ELJFA270□F | 27 | | | | | 22 | 5.0 | 90 |
| ELJFA330□F | 33 | 20 | 5.6 | 85 | | | | |
| ELJFA390□F | 39 | 20 | 6.4 | 80 | | | | |
| ELJFA470□F | 47 | 15 | 7.0 | 75 | | | | |
| ELJFA560□F | 56 | 15 | 8.0 | 70 | | | | |
| ELJFA680□F | 68 | 15 | 9.0 | 65 | | | | |
| ELJFA820□F | 82 | 10 | 10.0 | 60 | | | | |
| ELJFA101□F | 100 | 10 | 10.0 | 60 | | | | |
| ELJFA121□F | 120 | 10 | 11.0 | 55 | | | | |
| ELJFA151□F | 150 | 8 | 15.0 | 50 | | | | |
| ELJFA181□F | 180 | 7 | 17.0 | 50 | | | | |
| ELJFA221□F | 220 | 7 | 21.0 | 45 | | | | |

□ : Symbol of Tolerance *1 : Self Resonant Frequency *2 : DC Resistance

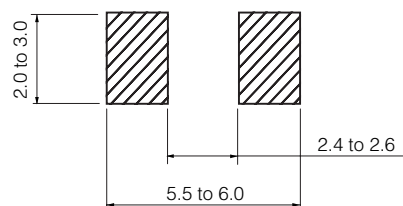
Design and specifications are each subject to change without notice. Ask factory for the current technical specifications before purchase and/or use. Should a safety concern arise regarding this product, please be sure to contact us immediately.

■ FB Type 4532 (1812)

● Dimensions in mm (not to scale)



● Recommended Land Pattern in mm (not to scale)



■ Standard Packing Quantity

● 500 pcs./Reel

■ Standard Parts

| Part No. | Inductance | | | Q | | SRF *1 (MHz) min. | R _{DC} *2 (Ω) max. | DC Current (mA) max. |
|------------|------------|-----------------------------|---------------------|------|---------------------|----------------------|--------------------------------|-------------------------|
| | (μH) | Tolerance (%) | Test Freq. (MHz) | min. | Test Freq. (MHz) | | | |
| ELJFBR22□F | 0.22 | M : ±20 % | 1.0 | 30 | 25.2 | 230 | 0.30 | 700 |
| ELJFBR27□F | 0.27 | | | | | 200 | 0.32 | 650 |
| ELJFBR33□F | 0.33 | | | | | 180 | 0.35 | 630 |
| ELJFBR39□F | 0.39 | | | | | 155 | 0.37 | 620 |
| ELJFBR47□F | 0.47 | | | | | 135 | 0.40 | 580 |
| ELJFBR56□F | 0.56 | | | | | 120 | 0.42 | 560 |
| ELJFBR68□F | 0.68 | | | | | 105 | 0.48 | 530 |
| ELJFBR82□F | 0.82 | | | | | 90 | 0.50 | 500 |
| ELJFB1R0□F | 1.0 | M:±20 % or K : ±10 % | 1.0 | 50 | 7.96 | 80 | 0.52 | 470 |
| ELJFB1R2□F | 1.2 | | | | | 70 | 0.55 | 460 |
| ELJFB1R5□F | 1.5 | | | | | 60 | 0.61 | 430 |
| ELJFB1R8□F | 1.8 | | | | | 50 | 0.61 | 410 |
| ELJFB2R2□F | 2.2 | | | | | 45 | 0.61 | 410 |
| ELJFB2R7□F | 2.7 | | | | | 43 | 0.61 | 400 |
| ELJFB3R3□F | 3.3 | | | | | 39 | 0.66 | 380 |
| ELJFB3R9□F | 3.9 | | | | | 36 | 0.74 | 360 |
| ELJFB4R7□F | 4.7 | | | | | 33 | 0.81 | 350 |
| ELJFB5R6□F | 5.6 | | | | | 30 | 0.88 | 330 |
| ELJFB6R8□F | 6.8 | K : ±10 % or J : ±5 % | 0.1 | 40 | 5 | 26 | 1.0 | 310 |
| ELJFB8R2□F | 8.2 | | | | | 24 | 1.6 | 250 |
| ELJFB100□F | 10 | | | | | 22 | 1.8 | 235 |
| ELJFB120□F | 12 | | | | | 20 | 1.9 | 225 |
| ELJFB150□F | 15 | | | | | 18 | 2.1 | 215 |
| ELJFB180□F | 18 | | | | | 16 | 2.3 | 205 |
| ELJFB220□F | 22 | | | | | 15 | 2.6 | 195 |
| ELJFB270□F | 27 | | | | | 13 | 2.9 | 185 |
| ELJFB330□F | 33 | | | | | 12 | 3.1 | 175 |
| ELJFB390□F | 39 | | | | | 10 | 3.6 | 165 |
| ELJFB470□F | 47 | K : ±10 % or J : ±5 % | 0.1 | 30 | 2.52 | 9.7 | 4.2 | 130 |
| ELJFB560□F | 56 | | | | | 9.0 | 4.7 | 125 |
| ELJFB680□F | 68 | | | | | 8.2 | 5.3 | 115 |
| ELJFB820□F | 82 | | | | | 7.5 | 5.9 | 110 |
| ELJFB101□F | 100 | | | | | 6.7 | 8.8 | 105 |
| ELJFB121□F | 120 | | | | | 6.1 | 10 | 100 |
| ELJFB151□F | 150 | | | | | 5.5 | 11 | 95 |
| ELJFB181□F | 180 | | | | | 5.1 | 13 | 85 |
| ELJFB221□F | 220 | | | | | 4.5 | 13 | 85 |
| ELJFB271□F | 270 | | | | | 4.1 | 14 | 80 |
| ELJFB331□F | 330 | K : ±10 % or J : ±5 % | 0.1 | 30 | 0.796 | 3.7 | 16 | 75 |
| ELJFB391□F | 390 | | | | | 3.3 | 19 | 70 |
| ELJFB471□F | 470 | | | | | 3.3 | 31 | 55 |
| ELJFB561□F | 560 | | | | | 2.7 | 35 | 50 |
| ELJFB681□F | 680 | | | | | 2.5 | 39 | 50 |
| ELJFB821□F | 820 | | | | | 2.4 | 45 | 45 |
| ELJFB102□F | 1000 | 2.1 | 53 | 40 | | | | |

□ : Symbol of Tolerance *1 : Self Resonant Frequency *2 : DC Resistance

Design and specifications are each subject to change without notice. Ask factory for the current technical specifications before purchase and/or use. Should a safety concern arise regarding this product, please be sure to contact us immediately.

OUR CERTIFICATE

DiGi provide top-quality products and perfect service for customer worldwide through standardization, technological innovation and continuous improvement. DiGi through third-party certification, we stricly control the quality of products and services. Welcome your RFQ to

Email: Info@DiGi-Electronics.com



Tel: +00 852-30501935

RFQ Email: Info@DiGi-Electronics.com

DiGi is a global authorized distributor of electronic components.