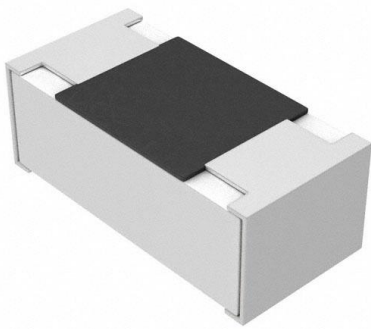


ERJ-U01D6981C Datasheet

www.digi-electronics.com



<https://www.DiGi-Electronics.com>

DiGi Electronics Part Number	ERJ-U01D6981C-DG
Manufacturer	Panasonic Electronic Components
Manufacturer Product Number	ERJ-U01D6981C
Description	RES 6.98K OHM 0.5% 1/20W 0201
Detailed Description	6.98 kOhms \pm 0.5% 0.05W, 1/20W Chip Resistor 0201 (0603 Metric) Anti-Sulfur Thick Film

This model ERJ-U01D6981C is available at DiGi Electronics.

DiGi Electronics offers a global database of semiconductor and electronic component datasheets.

We welcome your inquiries regarding pricing, lead time, or other product-related questions.

 [Request a Quote](#)

 [Datasheet Search](#)



Tel: +00 852-30501935

RFQ Email: Info@DiGi-Electronics.com

DiGi is a global authorized distributor of electronic components.

Purchase and inquiry

Manufacturer Product Number:

ERJ-U01D6981C

Series:

ERJ-U01

Resistance:

6.98 kOhms

Power (Watts):

0.05W, 1/20W

Features:

Anti-Sulfur

Operating Temperature:

-55°C ~ 125°C

Supplier Device Package:

0201

Size / Dimension:

0.024" L x 0.012" W (0.60mm x 0.30mm)

Number of Terminations:

2

Manufacturer:

Panasonic Electronic Components

Product Status:

Active

Tolerance:

±0.5%

Composition:

Thick Film

Temperature Coefficient:

±200ppm/°C

Package / Case:

0201 (0603 Metric)

Ratings:

-

Height - Seated (Max):

0.010" (0.26mm)

Failure Rate:

-

Environmental & Export classification

RoHS Status:

ROHS3 Compliant

REACH Status:

REACH Unaffected

HTSUS:

8533.21.0030

Moisture Sensitivity Level (MSL):

1 (Unlimited)

ECCN:

EAR99

OUR CERTIFICATE

DiGi provide top-quality products and perfect service for customer worldwide through standardization, technological innovation and continuous improvement. DiGi through third-party certification, we stricly control the quality of products and services. Welcome your RFQ to

Email: Info@DiGi-Electronics.com



Tel: +00 852-30501935

RFQ Email: Info@DiGi-Electronics.com

DiGi is a global authorized distributor of electronic components.