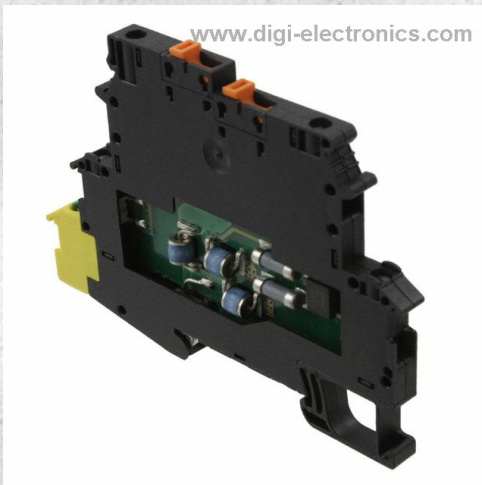


2920641 Datasheet



<https://www.DiGi-Electronics.com>

| | |
|------------------------------|--------------------------------------------------------|
| DiGi Electronics Part Number | 2920641-DG |
| Manufacturer | Phoenix Contact |
| Manufacturer Product Number | 2920641 |
| Description | TERM BLK SURGE PROT 2POS 6.2MM |
| Detailed Description | 2 Position Terminal Block Black Surge Protection 6.2mm |

This model 2920641 is available at DiGi Electronics.

DiGi Electronics offers a global database of semiconductor and electronic component datasheets.

We welcome your inquiries regarding pricing, lead time, or other product-related questions.

 [Request a Quote](#)

 [Datasheet Search](#)



Tel: +00 852-30501935

RFQ Email: Info@DiGi-Electronics.com

DiGi is a global authorized distributor of electronic components.

Purchase and inquiry

Manufacturer Product Number:

2920641

Series:

TRABTECH TT

Type:

Surge Protection

Number of Positions:

2

Terminal - Width:

6.2mm

Wire Gauge or Range - AWG:

14-24 AWG

Features:

-

Length:

3.732" (94.80mm)

Material - Insulation:

Polyamide (PA66), Nylon 6/6

Stripping Length:

8mm

Manufacturer:

Phoenix Contact

Product Status:

Obsolete

Mounting Type:

DIN Rail

Number of Levels:

2; Connected and Grounded

Termination Style:

Screw

Wire Gauge or Range - mm²:

0.2-2.5mm²

Housing Color:

Black

Height (Max):

2.720" (69.10mm)

Material Flammability Rating:

UL94 V-2

Operating Temperature:

-40°C ~ 80°C

Environmental & Export classification

RoHS Status:

RoHS Compliant

ECCN:

EAR99

Moisture Sensitivity Level (MSL):

1 (Unlimited)

HTSUS:

8536.30.8000

Surge protection device - TT-2-PE-M-24DC - 2920641

Please be informed that the data shown in this PDF Document is generated from our Online Catalog. Please find the complete data in the user's documentation. Our General Terms of Use for Downloads are valid (<http://download.phoenixcontact.com>)



Modular terminal block with two-stage surge protection for one operated floating double conductor, disconnect knife on both signal paths, separate ground connection, nominal voltage: 24 V DC.

Why buy this product

- Versions with and without disconnect knife
- Protection of a floating double wire
- Protection of two signal wires with common reference potential
- Multi-stage modular terminal blocks with screw connection technology
- Disconnection of signal circuits by disconnect knife



Key commercial data

| | |
|------------------------|---------------------------------------------------------------------------------------------------------|
| Packing unit | 0 |
| Minimum order quantity | 1 |
| Catalog page | Page 106 (TT-2011) |
| GTIN |  4 046356 160193 |
| Custom tariff number | 85363010 |
| Country of origin | GERMANY |

Technical data

General

| | |
|-----------------------------------------|-------------------------------------------------------------------|
| Housing material | PA 6.6 |
| Inflammability class according to UL 94 | V2 |
| Color | black |
| Total surge current (8/20) μ s | 10 kA |
| Total surge current (10/350) μ s | 1 kA |
| Ambient temperature (operation) | -40 °C ... 80 °C |
| Mounting type | DIN rail: 35 mm |
| Design | Double-level terminal block with PE foot – separate PE connection |
| Number of positions | 2 |
| Degree of protection | IP20 |
| Direction of action | Line-Line & Line-Earth Ground |

Surge protection device - TT-2-PE-M-24DC - 2920641

Technical data

General

| | |
|--------|----------|
| Width | 6.2 mm |
| Height | 92 mm |
| Depth | 66.45 mm |

Protective circuit

| | |
|------------------------------------------------------------------------------|----------------------------|
| IEC category | C1 |
| IEC category | C2 |
| IEC category | C3 |
| IEC category | D1 |
| Nominal voltage UN | 24 V DC |
| Nominal voltage UN | 17 V AC |
| Maximum continuous operating voltage UC | 30 V DC |
| Maximum continuous operating voltage UC | 21 V AC |
| Maximum continuous voltage UC (wire-wire) | 30 V DC |
| Maximum continuous voltage UC (wire-wire) | 21 V AC |
| Nominal current IN | 300 mA (40°C) |
| Operating effective current IC at UC | ≤ 5 μA |
| Ground conductor current IPE | ≤ 2 μA |
| Nominal discharge surge current In (8/20) μs (Core-Core) | 5 kA |
| Nominal discharge surge current In (8/20) μs (Core-Earth) | 5 kA |
| Total surge current (8/20) μs | 10 kA |
| Max. discharge surge current I _{max} (8/20) μs maximum (Core-Core) | 5 kA |
| Max. discharge surge current I _{max} (8/20) μs maximum (Core-Earth) | 5 kA (per path) |
| Nominal pulse current I _{an} (10/1000) μs (Core-Core) | 30 A |
| Nominal pulse current I _{an} (10/1000) μs (Core-Earth) | 100 A (per path) |
| Lightning test current (10/350) μs, peak value I _{imp} | 500 A (per path) |
| Output voltage limitation at 1 kV/μs (Core-Core) spike | ≤ 45 V |
| Output voltage limitation at 1 kV/μs (Core-Earth) spike | ≤ 650 V |
| Output voltage limitation at 1 kV/μs (Core-Core) static | ≤ 45 V |
| Output voltage limitation at 1 kV/μs (Core-Earth) static | ≤ 650 V |
| Residual voltage at I _n , (conductor-conductor) | ≤ 45 V |
| Residual voltage with I _{an} (10/1000) μs (conductor-conductor) | ≤ 50 V |
| Protection level UP (Core-Core) | ≤ 55 V (C2 (10 kV/5 kA)) |
| Protection level UP (Core-Core) | ≤ 53 V (C1 (500 V/250 A)) |
| Response time t _A (Core-Core) | ≤ 1 ns |
| Response time t _A (Core-Earth) | ≤ 100 ns |
| Input attenuation a _E , sym. | 0.6 dB (≤ 500 kHz / 50 Ω) |
| Input attenuation a _E , sym. | 0.2 dB (≤ 200 kHz / 150 Ω) |
| Cut-off frequency f _g (3 dB), sym. in 50 Ohm system | Typ. 6 MHz |
| Cut-off frequency f _g (3 dB), sym. in 150 Ohm system | Typ. 2 MHz |
| Capacity (Core-Core) | Typ. 2.5 nF |
| Resistance in series | 3.3 Ω 20 % |

Surge protection device - TT-2-PE-M-24DC - 2920641

Technical data

Protective circuit

| | |
|------------------------------------------------------------------------------|--------------------------------------------|
| Resistance in series | 3.3 Ω |
| Max. required back-up fuse | 315 mA (e.g. T in acc. with IEC 127-2/III) |
| Surge carrying capacity in acc. with IEC 61643-21 (Core-Core) | C2 (10 kV/5 kA) |
| Surge carrying capacity in acc. with IEC 61643-21 (Core-Earth) | C2 (10 kV/5 kA) |
| Surge carrying capacity in acc. with IEC 61643-21 (Core-Earth) | D1 (500 A) |
| Alternating current carrying capacity in acc. with IEC 61643-21 (Core-Earth) | 5 A - 1 s |

Connection data

| | |
|----------------------------------------|-----------------------|
| Connection method | Screw connection |
| Connection type IN | Screw terminal blocks |
| Connection type OUT | Screw terminal blocks |
| Screw thread | M3 |
| Tightening torque | 0.8 Nm |
| Stripping length | 8 mm |
| Conductor cross section stranded min. | 0.2 mm ² |
| Conductor cross section stranded max. | 2.5 mm ² |
| Conductor cross section solid min. | 0.2 mm ² |
| Conductor cross section solid max. | 2.5 mm ² |
| Conductor cross section AWG/kcmil min. | 24 |
| Conductor cross section AWG/kcmil max | 14 |

Connection, protective circuit

| | |
|-----------------------|--------------|
| Standards/regulations | IEC 61643-21 |
|-----------------------|--------------|

Classifications

eclass

| | |
|------------|----------|
| eCl@ss 4.0 | 27140201 |
| eCl@ss 4.1 | 27130801 |
| eCl@ss 5.0 | 27130801 |
| eCl@ss 5.1 | 27130801 |
| eCl@ss 6.0 | 27130807 |
| eCl@ss 7.0 | 27130807 |

etim

| | |
|----------|----------|
| ETIM 2.0 | EC000943 |
| ETIM 3.0 | EC000943 |
| ETIM 4.0 | EC000943 |

unspsc

| | |
|---------------|----------|
| UNSPSC 6.01 | 30212010 |
| UNSPSC 7.0901 | 39121610 |
| UNSPSC 11 | 39121610 |

Surge protection device - TT-2-PE-M-24DC - 2920641

Classifications

unspsc

| | |
|--------------|----------|
| UNSPSC 12.01 | 39121610 |
| UNSPSC 13.2 | 39121620 |

Approvals

Approvals

Approvals

GOST

Ex Approvals

Approvals submitted

Approval details



Accessories

Accessories

Marking

Marker pen - B-STIFT - 1051993



Marker pen, for manual labeling of unprinted Zack strips, smear-proof and waterproof, line thickness 0.5 mm

Zack Marker strip, flat - ZBF 6:UNBEDRUCKT - 0808710



Zack Marker strip, flat, Strip, white, Unlabeled, Can be labeled with: Plotter, Mounting type: Snap into flat marker groove, For terminal block width: 6.2 mm, Lettering field: 5.15 x 6.15 mm

Surge protection device - TT-2-PE-M-24DC - 2920641

Accessories

Zack Marker strip, flat - ZBF 6/WH-100:UNBEDRUCKT - 0808736



Zack Marker strip, flat, Strip, white, Unlabeled, Can be labeled with: Plotter, Mounting type: Snap into flat marker groove, For terminal block width: 6.2 mm, Lettering field: 5.15 x 6.15 mm

Zack Marker strip, flat - ZBF 6,LGS:FORTL.ZAHLEN - 0808749



Zack Marker strip, flat, Strip, white, Labeled, Printed horizontally: Consecutive numbers 1 - 10, 11 - 20, etc. up to 91 - 100, Mounting type: Snap into flat marker groove, For terminal block width: 6.2 mm, Lettering field: 5.15 x 6.15 mm

Zack marker strip - ZB 6:UNBEDRUCKT - 1051003



Zack marker strip, Strip, white, Unlabeled, Can be labeled with: Plotter, Mounting type: Snap into tall marker groove, For terminal block width: 6.2 mm, Lettering field: 6.15 x 10.5 mm

Zack marker strip - ZB 6,LGS:U-N - 1051430



Zack marker strip, Strip, white, Labeled, Can be labeled with: Plotter, Printed horizontally: U, V, W, N, GND, U, V, W, N, GND, Mounting type: Snap into tall marker groove, For terminal block width: 6.2 mm, Lettering field: 6.15 x 10.5 mm

Zack marker strip - ZB 6,LGS:FORTL.ZAHLEN - 1051016



Zack marker strip, Strip, white, Labeled, Can be labeled with: Plotter, Printed horizontally: Consecutive numbers 1 - 10, 11 - 20, etc. up to 491 - 500, Mounting type: Snap into tall marker groove, For terminal block width: 6.2 mm, Lettering field: 6.15 x 10.5 mm

Surge protection device - TT-2-PE-M-24DC - 2920641

Accessories

End cover - TT-D-2-PE-M-BK - 2920654



End cover for TERMITRAB TT-2-PE-M-... and TT-2/2-M-...

Additional products

End cover - TT-D-2-PE-M-BK - 2920654



End cover for TERMITRAB TT-2-PE-M-... and TT-2/2-M-...

Shield connection - SSA 3-6 - 2839295



shield fast connections for conductor diameter 3 - 6 mm. Potential connection cable: 200 mm, black

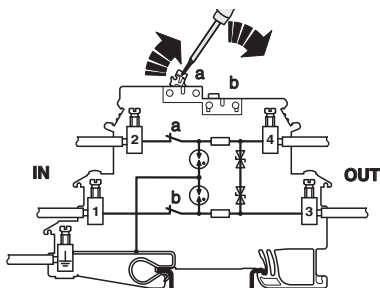
Shield connection - SSA 5-10 - 2839512



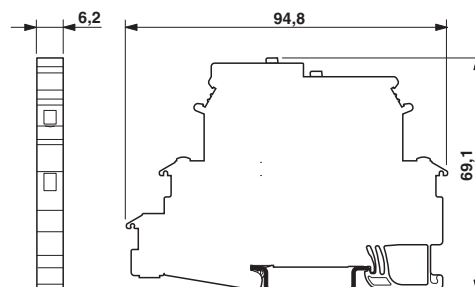
Shield fast connection for conductor diameters 5 - 10 mm. Potential connection cable: 200 mm, black

Drawings

Connection diagram

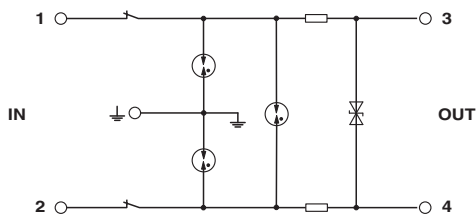


Dimensioned drawing

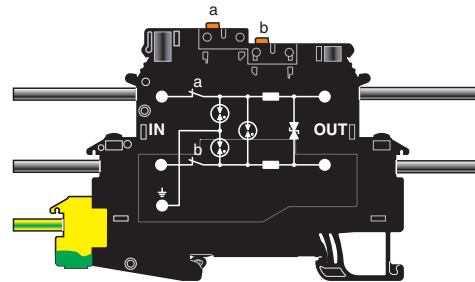


Surge protection device - TT-2-PE-M-24DC - 2920641

Circuit diagram



Schematic diagram



OUR CERTIFICATE

DiGi provide top-quality products and perfect service for customer worldwide through standardization, technological innovation and continuous improvement. DiGi through third-party certification, we stricly control the quality of products and services. Welcome your RFQ to

Email: Info@DiGi-Electronics.com



Tel: +00 852-30501935

RFQ Email: Info@DiGi-Electronics.com

DiGi is a global authorized distributor of electronic components.