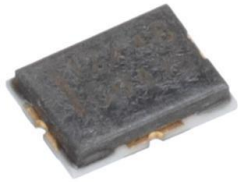


SCF4030-12-01 Datasheet

www.digi-electronics.com



<https://www.DiGi-Electronics.com>

DiGi Electronics Part Number	SCF4030-12-01-DG
Manufacturer	Eaton - Electronics Division
Manufacturer Product Number	SCF4030-12-01
Description	FUSE TRIGGERABLE 12A 36V 1 CELL
Detailed Description	12A 36 VDC Fuse Board Mount Surface Mount

This model SCF4030-12-01 is available at DiGi Electronics.

DiGi Electronics offers a global database of semiconductor and electronic component datasheets.

We welcome your inquiries regarding pricing, lead time, or other product-related questions.

 [Request a Quote](#)

 [Datasheet Search](#)



Tel: +00 852-30501935

RFQ Email: Info@DiGi-Electronics.com

DiGi is a global authorized distributor of electronic components.

Purchase and inquiry

Manufacturer Product Number:

SCF4030-12-01

Series:

SCF4030

Mounting Type:

Surface Mount

Current Rating (Amps):

12A

Response Time:

Fast Blow

Features:

3 ~ 4.5V Triggerable

Approval Agency:

cURus

Breaking Capacity @ Rated Voltage:

50A

Size / Dimension:

0.157" L x 0.118" W x 0.035" H (4.00mm x 3.00mm x 0.90mm)

Manufacturer:

Eaton - Electronics Division

Product Status:

Active

Fuse Type:

Board Mount

Voltage Rating - DC:

36 VDC

Applications:

Battery Protection

Class:

-

Operating Temperature:

-20°C ~ 60°C

Package / Case:

1612 (4030 Metric)

DC Cold Resistance:

0.001 Ohms

Environmental & Export classification

RoHS Status:

ROHS3 Compliant

ECCN:

EAR99

Moisture Sensitivity Level (MSL):

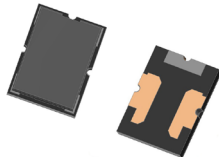
1 (Unlimited)

HTSUS:

8533.40.8070

SCF4030

4.0 mm x 3.0 mm Surface mount self-control fuse



Product features

- Surface mount, 3 terminal fuse
- Provides overcurrent and overcharging protection
- Integrated thermal element provides triggerable operation
- Ideal for battery powered electronics
- A unique fusible device provides fast acting performance
- Moisture sensitivity level (MSL): 1

Applications

- Notebook and laptop computing
- Handheld electric power tools
- Battery powered household appliances

Agency information

cURus recognition file number:
E19180, Guide JDYX2 and JDYX8



Environmental compliance



Ordering part number

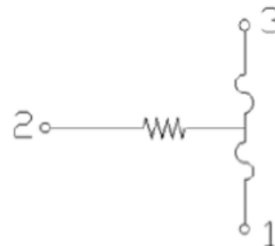
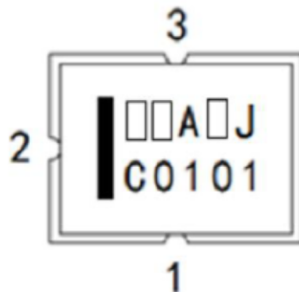
SCF4030- 15 -01

Family code

Ampere rating

Number of cells

Equivalent circuit diagram



Electrical characteristics

Condition of test	Opening time
100% of current rating	1 hour minimum
200% of current rating	60 seconds maximum
Operating voltage	60 seconds maximum

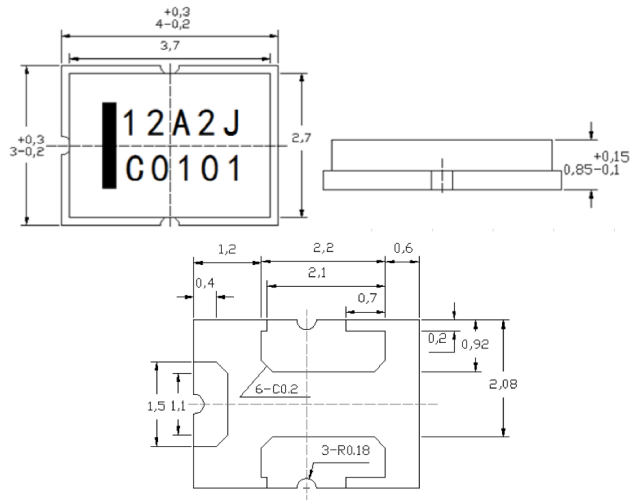
Product specifications

Part number	Current rating (A)	Voltage rating ¹ (Vdc)	Heater DCR (Ω)	Operating voltage (V)	Breaking capacity (A)	Fuse DCR (mΩ)	Applicable cells in series	Part Marking	Agency approval cURus
SCF4030-12-01	12	36	0.6 - 1.5	3.0 – 4.5	50	1.0 – 3.5	1	12A1J	√
SCF4030-12-02	12	36	2.0 - 3.2	4.0 – 9.0	50	1.0 – 3.5	2	12A2J	√
SCF4030-12-03	12	36	5.7 - 9.9	7.4 – 13.8	50	1.0 – 3.5	3	12A3J	√
SCF4030-12-04	12	36	11.2 - 20.0	10.5 – 19.6	50	1.0 – 3.5	4	12A4J	√
SCF4030-12-05	12	36	17.0 - 34.0	14.4 – 23.5	50	1.0 – 3.5	5	12A5J	√
SCF4030-12-06	12	36	24.0 - 40.0	15.6 – 27.0	50	1.0 – 3.5	6	12A74	
SCF4030-12-67	12	36	30.0 - 50.0	17.4 – 32.9	50	1.5 - 3.5	6-7	12A7J	√
SCF4030-12-07	12	36	32.0 - 54.0	18.2 – 31.5	50	1.0 – 3.5	7	12A75	
SCF4030-12-08	12	36	39.0 - 65.0	20.3 – 36.0	50	1.5 – 3.5	8	12A72	
SCF4030-12-09	12	48	52.0 - 83.0	27.0 – 40.5	200	1.5 – 3.5	9	12A82	
SCF4030-12-10	12	48	65.0 - 100.0	30.0 – 45.0	200	1.5 – 3.5	10	12A83	
SCF4030-15-01	15	36	0.77 - 1.29	3.0 – 5.0	50	1.0– 3.0	1	15A1J	√
SCF4030-15-02	15	36	2.38 - 3.58	5.0 – 9.0	50	1.0 – 3.0	2	15A2J	√
SCF4030-15-03	15	36	5.44 - 8.16	7.4 – 13.8	50	1.0 – 3.0	3	15A3J	√
SCF4030-15-04	15	36	11.0 - 16.5	10.5 – 19.6	50	1.0 – 3.0	4	15A4J	√
SCF4030-15-05	15	36	15.0 - 20.2	12.0 – 21.5	50	1.0 – 3.0	5	15A5J	√
SCF4030-15-06	15	48	24.5 - 40.9	17.3 – 28.2	200	1.0 – 3.0	6	15A6J	√
SCF4030-15-07	15	48	36.0 - 56.0	20.2 – 32.9	200	1.0 – 3.0	7	15A7J	√
SCF4030-15-08	15	48	47.0 - 73.0	23.1 – 37.6	200	1.0 – 3.0	8	15A8J	√
SCF4030-15-10	15	48	74.0 - 105.0	25.0 – 47.0	200	1.0 – 3.0	10	15A82	
SCF4030-22-01	22	48	0.72 - 1.02	3.5 – 4.7	200	0.8 - 1.8	1	22A1J	√
SCF4030-22-02	22	48	2.29 - 3.30	6.0 – 9.2	200	0.8 - 1.8	2	22A2J	√
SCF4030-22-03	22	48	5.5 - 7.4	9.0 – 13.8	200	0.8 - 1.8	3	22A3J	√
SCF4030-22-04	22	48	9.75 - 13.25	12.0 – 18.5	200	0.8 - 1.8	4	22A4J	√
SCF4030-22-05	22	48	18.1 - 25.5	17.5 – 23.5	200	0.8 - 1.8	5	22A5J	√
SCF4030-22-06	22	48	22.0 - 30.0	18.0 – 27.0	200	0.8 - 1.8	6	22A52	
SCF4030-22-07	22	48	29.5 - 46.0	24.0 – 32.0	200	0.8 - 1.8	7	22A53	
SCF4030-22-10	22	48	62.0 - 92.0	32.0 – 45.0	200	0.8 - 1.8	10	22A83	

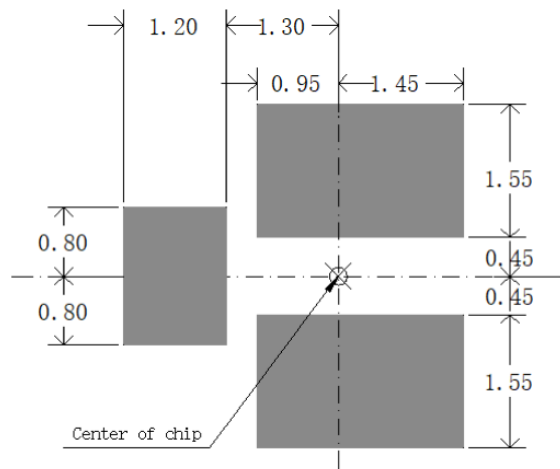
1. Rated voltage is the maximum voltage that the fuse can block, not the action voltage of the heater assembly

SCF4030
4.0 mm x 3.0 mm Surface mount self-control fuse

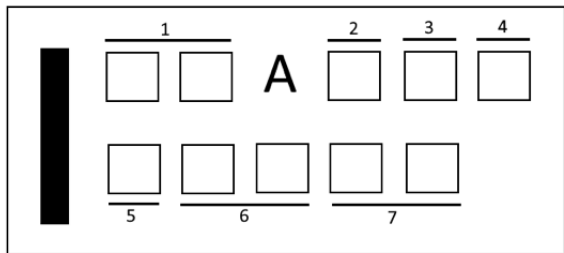
Dimensions- mm
 Drawing not to scale



Recommended pad layout



Part marking



1. Rated current: 12 A, 15 A, 22 A
2. Number related to series cells number
3. Length width size code: J:4.0 x 3.0 mm, for space limit may not shows on the body
4. Extension for (2)
5. Year: D: 2018; E: 2019.....
6. Week of year: 01, 02.....52
7. Running number: 01, 02.....

General specifications

Operating temperature: -20 °C to +60 °C

Storage temperature: 10 °C to +40 °C < 90% RH

Storage duration: 1 year

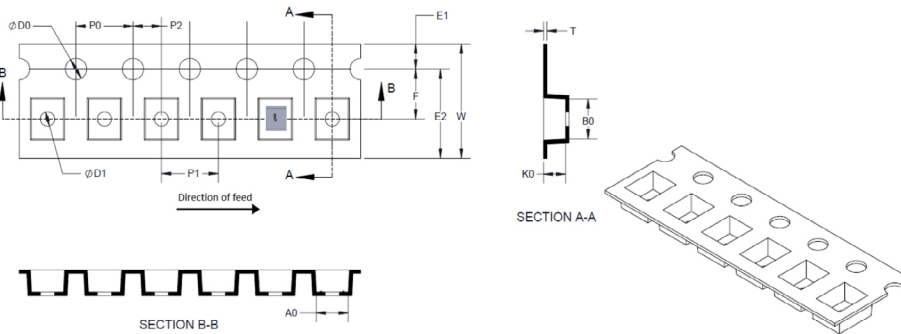
High temperature: +105 °C @ 1000 hours

Humidity: +85 °C @ 85% RH @ 500 hours

Low temperature: -40 °C @ 500 hours

Packaging information- mm

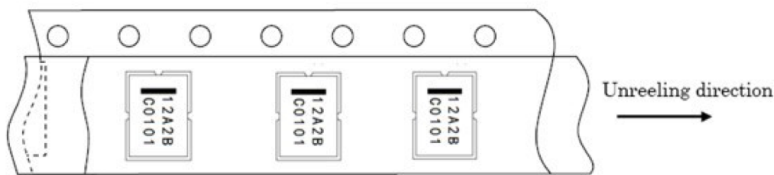
Supplied in tape and reel packaging, 5000 parts per 13" diameter reel. (EIA-481 compliant)



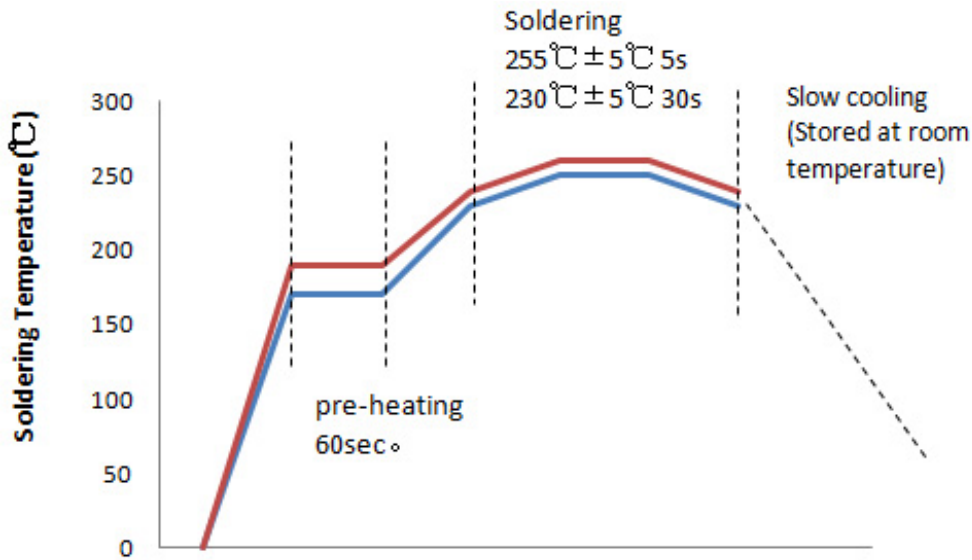
Code	(mm)
E1	1.75 ± 0.10
F	5.50 ± 0.10
P2	2.00 ± 0.05
D0	1.50 + 0.1/-0
D1	1.50 + 0.1/-0
P0	4.00 ± 0.10
10P0	40.0 ± 0.20
W	12.00 ± 0.30
P	8.00 ± 0.10
A0	3.30 ± 0.10
B0	4.30 ± 0.10
K0	1.15 ± 0.10
T	0.30 ± 0.05

Direction of taping

The direction shall be seen from the top cover tape side



Solder reflow profile



Life Support Policy: Eaton does not authorize the use of any of its products for use in life support devices or systems without the express written approval of an officer of the Company. Life support systems are devices which support or sustain life, and whose failure to perform, when properly used in accordance with instructions for use provided in the labeling, can be reasonably expected to result in significant injury to the user.

Eaton reserves the right, without notice, to change design or construction of any products and to discontinue or limit distribution of any products. Eaton also reserves the right to change or update, without notice, any technical information contained in this bulletin.

Eaton
Electronics Division
1000 Eaton Boulevard
Cleveland, OH 44122
United States
Eaton.com/electronics

© 2022 Eaton
All Rights Reserved
Printed in USA
Publication No. ELX1133 BU-ELX21141
January 2022

Eaton is a registered trademark.

All other trademarks are property of their respective owners.

Follow us on social media to get the latest product and support information.



OUR CERTIFICATE

DiGi provide top-quality products and perfect service for customer worldwide through standardization, technological innovation and continuous improvement. DiGi through third-party certification, we stricly control the quality of products and services. Welcome your RFQ to

Email: Info@DiGi-Electronics.com



Tel: +00 852-30501935

RFQ Email: Info@DiGi-Electronics.com

DiGi is a global authorized distributor of electronic components.