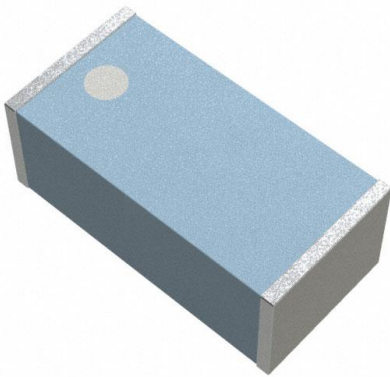


ANT3216LL00R2400A Datasheet

www.digi-electronics.com



<https://www.DiGi-Electronics.com>

DiGi Electronics Part Number	ANT3216LL00R2400A-DG
Manufacturer	Pulse Electronics
Manufacturer Product Number	ANT3216LL00R2400A
Description	RF ANT 2.45GHZ CHIP SOLDER SMD
Detailed Description	2.45GHz Bluetooth, ISM, Wi-Fi, Zigbee™ Chip RF Antenna 2.4GHz ~ 2.5GHz 5.05dBi Solder Surface Mount

This model ANT3216LL00R2400A is available at DiGi Electronics.

DiGi Electronics offers a global database of semiconductor and electronic component datasheets.

We welcome your inquiries regarding pricing, lead time, or other product-related questions.

 [Request a Quote](#)

 [Datasheet Search](#)



Tel: +00 852-30501935

RFQ Email: Info@DiGi-Electronics.com

DiGi is a global authorized distributor of electronic components.

Purchase and inquiry

Manufacturer Product Number:

ANT3216LL00R2400A

Series:

3216

RF Family/Standard:

802.15.4, Bluetooth, General ISM, WiFi

Frequency (Center/Band):

2.45GHz

Antenna Type:

Chip

VSWR:

-

Gain:

5.05dBi

Features:

-

Ingress Protection:

-

Height (Max):

0.047" (1.20mm)

Base Product Number:

ANT3216

Manufacturer:

Pulse Electronics

Product Status:

Active

Frequency Group:

UHF (2GHz ~ 3GHz)

Frequency Range:

2.4GHz ~ 2.5GHz

Number of Bands:

1

Return Loss:

-

Power - Max:

1 W

Termination:

Solder

Mounting Type:

Surface Mount

Applications:

Bluetooth, ISM, Wi-Fi, Zigbee™

Environmental & Export classification

RoHS Status:

ROHS3 Compliant

REACH Status:

REACH Unaffected

HTSUS:

8517.71.0000

Moisture Sensitivity Level (MSL):

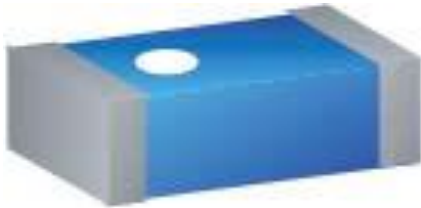
1 (Unlimited)

ECCN:

EAR99

TECHNICAL DATA SHEET**Description: 3216 2.4G Chip Antenna****PART NUMBER: ANT3216LL00R2400A****Features:**

- Size : 3.2x1.6x1.2 mm
- Working Frequency : 2.4~2.5GHz
- Omni-directional Radiation
- Tape & reel automatic mounting
- Reflow process compatible
- RoHS compliant

**Applications:**

- 2.4GHz WiFi device
- Bluetooth gadget
- Zigbee device
- ISM band equipment

In the effort to improve our products, we reserve the right to make changes judged to be necessary.

CONFIDENTIAL AND PROPRIETARY INFORMATION

This document contains confidential and proprietary information of Pulse Electronics, Inc. (Pulse) and is protected by copyright, trade secret and other state and federal laws. Its receipt or possession does not convey any rights to reproduce, disclose its contents, or to manufacture, use or sell anything it may describe. Reproduction, disclosure or use without specific written authorization of Pulse is strictly forbidden.

For more information:

Pulse Worldwide Headquarters
 15255 Innovation Drive #100
 San Diego, CA 92128
 USA
 Tel: 1-858-674-8100

Pulse/Larsen Antennas
 18110 SE 34th St Bldg 2 Suite 250
 Vancouver, WA 98683
 USA
 Tel: 1-360-944-7551

Europe Headquarters
 Pulse GmbH & Do, KG
 Zeppelinstrasse 15
 Herrenberg, Germany
 Tel: 49 7032 7806 0

Pulse (Suzhou) Wireless Products Co, Inc.
 99 Huo Ju Road(#29 Bldg,4th Phase
 Suzhou New District
 Jiangsu Province, Suzhou 215009 PR China
 Tel: 86 512 6807 9998



Description: 3216 2.4G Chip Antenna

PART NUMBER: ANT3216LL00R2400A

ELECTRICAL SPECIFICATIONS

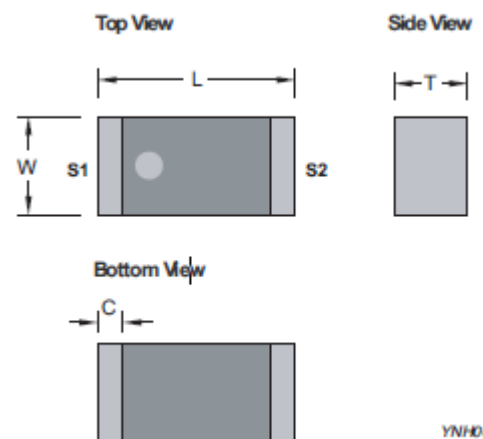
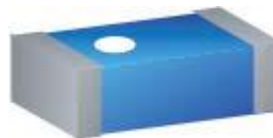
Working Frequency	2.4-2.5 GHz
Bandwidth	160 MHz(Typ.)
Polarization	Linear
Azimuth Beamwidth	Omni-directional
Peak Gain	5.05 dBi(Typ.)
Impedance	50 Ω
Operating Temperature	- 40~105 $^{\circ}\text{C}$
Maximum Power	1 W
Termination	Ni / Sn (Environmentally-Friendly Leadless)
Resistance to Soldering Heats	260 $^{\circ}\text{C}$, 10sec.

NOTE

1. The specification is defined on Pulse evaluation board

MECHANICAL DRAWING

	Dimension
L (mm)	3.2 \pm 0.15
W (mm)	1.6 \pm 0.15
T (mm)	1.2 \pm 0.15
C (mm)	0.4 \pm 0.20



Terminal name	Function
S1	Feeding Point
S2	Soldering Point

YNH0010

In the effort to improve our products, we reserve the right to make changes judged to be necessary.

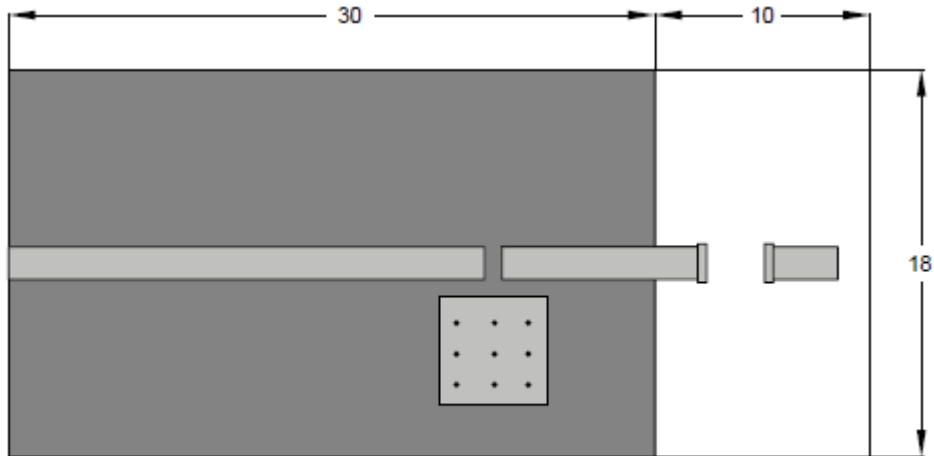
CONFIDENTIAL AND PROPRIETARY INFORMATION

This document contains confidential and proprietary information of Pulse Electronics, Inc. (Pulse) and is protected by copyright, trade secret and other state and federal laws. Its receipt or possession does not convey any rights to reproduce, disclose its contents, or to manufacture, use or sell anything it may describe. Reproduction, disclosure or use without specific written authorization of Pulse is strictly forbidden.

Description: 3216 2.4G Chip Antenna

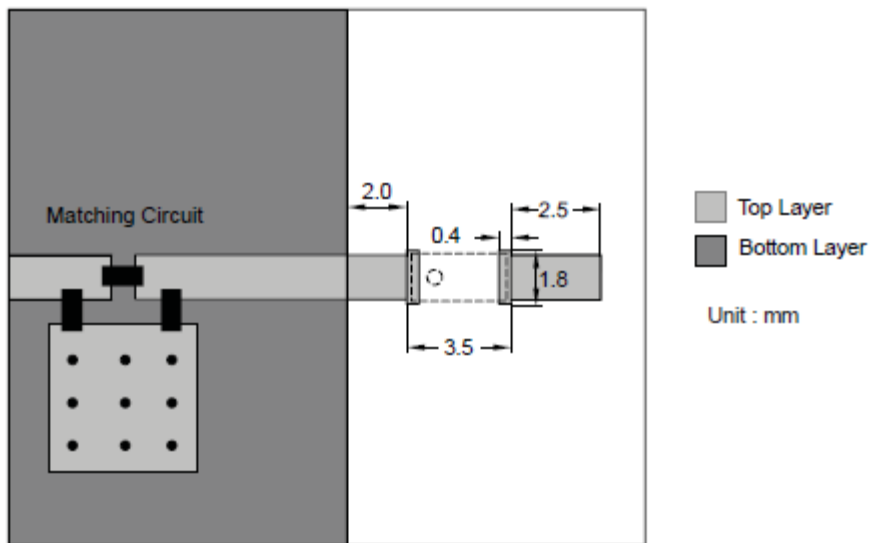
PART NUMBER: ANT3216LL00R2400A

REFERENCE DESIGN OF EVALUATION BOARD



Unit : mm

Outlook and dimension of evaluation board



Unit : mm

Details of soldering Pad

In the effort to improve our products, we reserve the right to make changes judged to be necessary.

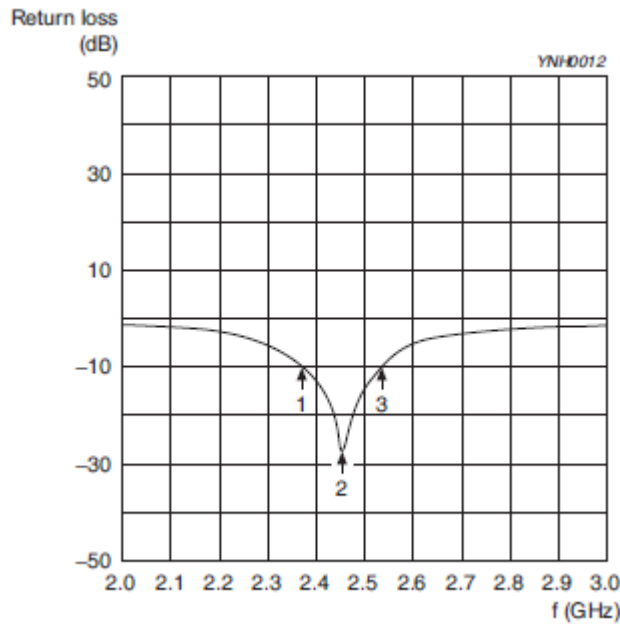
CONFIDENTIAL AND PROPRIETARY INFORMATION

This document contains confidential and proprietary information of Pulse Electronics, Inc. (Pulse) and is protected by copyright, trade secret and other state and federal laws. Its receipt or possession does not convey any rights to reproduce, disclose its contents, or to manufacture, use or sell anything it may describe. Reproduction, disclosure or use without specific written authorization of Pulse is strictly forbidden.

Description: 3216 2.4G Chip Antenna

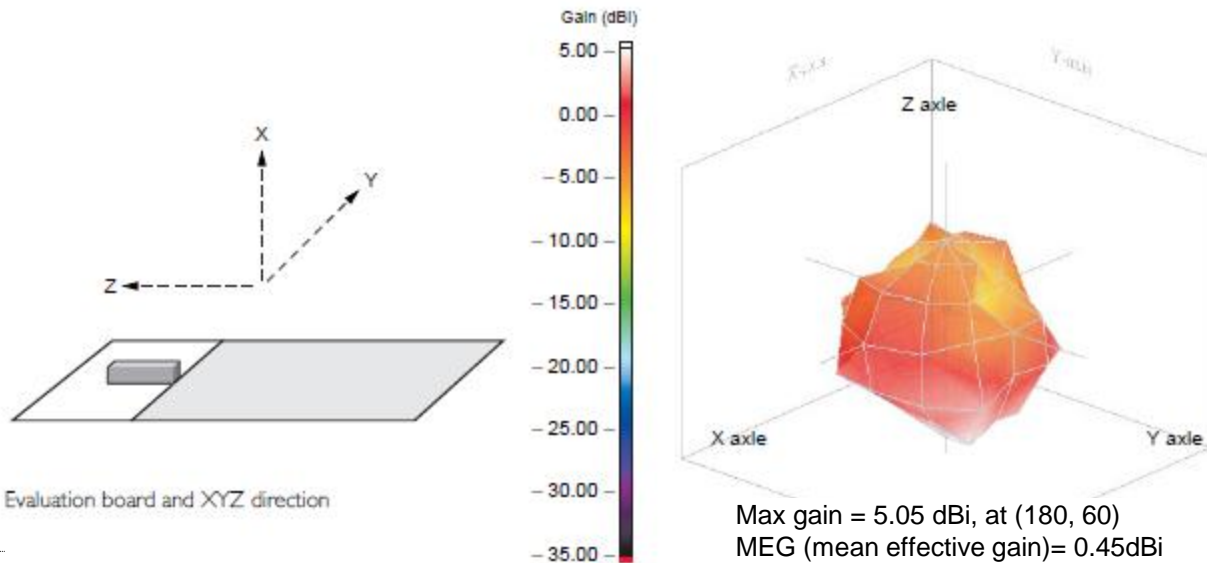
PART NUMBER: ANT3216LL00R2400A

ELECTRICAL PERFORMANCES



Marker data
 1. 2.37GHz, -10dB
 2. 2.45GHz, -27.3dB
 3. 2.53GHz, -10dB

Return loss



Evaluation board and XYZ direction

Radiation pattern

Max gain = 5.05 dBi, at (180, 60)
 MEG (mean effective gain) = 0.45dBi
 Directivity (dB) = 7.15
 Efficiency = -1.50dB, 70.74%

In the effort to improve our products, we reserve the right to make changes judged to be necessary.

CONFIDENTIAL AND PROPRIETARY INFORMATION

This document contains confidential and proprietary information of Pulse Electronics, Inc. (Pulse) and is protected by copyright, trade secret and other state and federal laws. Its receipt or possession does not convey any rights to reproduce, disclose its contents, or to manufacture, use or sell anything it may describe. Reproduction, disclosure or use without specific written authorization of Pulse is strictly forbidden.

Description: 3216 2.4G Chip Antenna**PART NUMBER: ANT3216LL00R2400A****REVISION HISTORY**

Revision	Date	Description
Version 1	Oct. 13, 2020	- New issue

In the effort to improve our products, we reserve the right to make changes judged to be necessary.

CONFIDENTIAL AND PROPRIETARY INFORMATION

This document contains confidential and proprietary information of Pulse Electronics, Inc. (Pulse) and is protected by copyright, trade secret and other state and federal laws. Its receipt or possession does not convey any rights to reproduce, disclose its contents, or to manufacture, use or sell anything it may describe. Reproduction, disclosure or use without specific written authorization of Pulse is strictly forbidden.

OUR CERTIFICATE

DiGi provide top-quality products and perfect service for customer worldwide through standardization, technological innovation and continuous improvement. DiGi through third-party certification, we stricly control the quality of products and services. Welcome your RFQ to

Email: Info@DiGi-Electronics.com



Tel: +00 852-30501935

RFQ Email: Info@DiGi-Electronics.com

DiGi is a global authorized distributor of electronic components.