

PA4305.104NLT Datasheet

www.digi-electronics.com



<https://www.DiGi-Electronics.com>

| | |
|------------------------------|---|
| DiGi Electronics Part Number | PA4305.104NLT-DG |
| Manufacturer | Pulse Electronics |
| Manufacturer Product Number | PA4305.104NLT |
| Description | FIXED IND 100UH 650MA 1.258 OHM |
| Detailed Description | 100 μ H Unshielded Wirewound Inductor 650 mA 1.258Ohm Max Nonstandard |



Tel: +00 852-30501935

RFQ Email: Info@DiGi-Electronics.com

DiGi is a global authorized distributor of electronic components.

Purchase and inquiry

Manufacturer Product Number:

PA4305.104NLT

Series:

PA4305.XXXNL

Type:

Wirewound

Inductance:

100 μ H

Current Rating (Amps):

650 mA

Shielding:

Unshielded

Q @ Freq:

-

Ratings:

-

Inductance Frequency - Test:

100 kHz

Mounting Type:

Surface Mount

Supplier Device Package:

-

Height - Seated (Max):

0.126" (3.20mm)

Manufacturer:

Pulse Electronics

Product Status:

Active

Material - Core:

-

Tolerance:

\pm 20%

Current - Saturation (Isat):

-

DC Resistance (DCR):

1.258Ohm Max

Frequency - Self Resonant:

-

Operating Temperature:

-40°C ~ 125°C

Features:

-

Package / Case:

Nonstandard

Size / Dimension:

0.248" L x 0.248" W (6.30mm x 6.30mm)

Environmental & Export classification

RoHS Status:

ROHS3 Compliant

REACH Status:

REACH Unaffected

HTSUS:

8504.50.4000

Moisture Sensitivity Level (MSL):

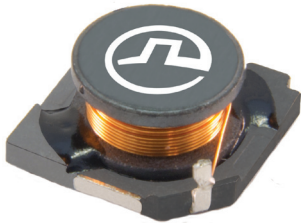
1 (Unlimited)

ECCN:

EAR99

Unshielded Drum Core Inductor

PA4305.XXXNL Series



- ⊕ **Height:** 3.2mm Max
- ⊕ **Footprint:** 6.3 x 6.3 mm Max
- ⊕ **Current Rating:** 0.2A to 6.1A
- ⊕ **Inductance Range:** 1uH to 1000uH

Electrical Specifications @ 25°C – Operating Temperature -40°C to 125°C

| Pulse Part Number | Inductance (uH) ^{1,2} | Rated Current (A) Max ³ | DC Resistance (mΩ) Max | Package Size |
|-------------------|--------------------------------|------------------------------------|------------------------|-----------------------|
| PA4305.102NLT | 1.0 | 6.1 | 38 | 6.3 x 6.3 x 3.2mm Max |
| PA4305.152NLT | 1.5 | 5.5 | 45 | |
| PA4305.222NLT | 2.2 | 4.35 | 55 | |
| PA4305.332NLT | 3.3 | 3.5 | 66 | |
| PA4305.472NLT | 4.7 | 3 | 81 | |
| PA4305.562NLT | 5.6 | 2.79 | 88 | |
| PA4305.682NLT | 6.8 | 2.5 | 108 | |
| PA4305.822NLT | 8.2 | 2.22 | 140 | |
| PA4305.103NLT | 10 | 2.1 | 153 | |
| PA4305.153NLT | 15 | 1.68 | 225 | |
| PA4305.223NLT | 22 | 1.38 | 332 | |
| PA4305.333NLT | 33 | 1.15 | 472 | |
| PA4305.473NLT | 47 | 0.95 | 648 | |
| PA4305.563NLT | 56 | 0.88 | 870 | |
| PA4305.683NLT | 68 | 0.8 | 950 | |
| PA4305.823NLT | 82 | 0.7 | 1111 | |
| PA4305.104NLT | 100 | 0.65 | 1258 | |
| PA4305.124NLT | 120 | 0.6 | 1544 | |
| PA4305.154NLT | 150 | 0.55 | 1895 | |
| PA4305.184NLT | 180 | 0.49 | 2427 | |
| PA4305.224NLT | 220 | 0.45 | 2756 | |
| PA4305.274NLT | 270 | 0.39 | 3568 | |
| PA4305.334NLT | 330 | 0.35 | 4344 | |
| PA4305.394NLT | 390 | 0.32 | 5616 | |
| PA4305.474NLT | 470 | 0.3 | 6341 | |
| PA4305.564NLT | 560 | 0.26 | 10116 | |
| PA4305.684NLT | 680 | 0.25 | 11765 | |
| PA4305.824NLT | 820 | 0.22 | 12992 | |
| PA4305.105NLT | 1000 | 0.2 | 14823 | |

Unshielded Drum Core Inductor

PA4305.XXXNL Series

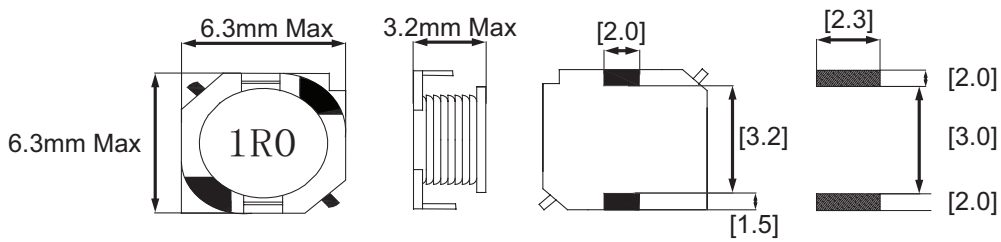


NOTES:

1. Inductance tolerance is +/-30% for inductance values between 1uH and 8.2uH and +/-20% for values between 10uH and 680uH.
2. Inductance is measured at 100kHz, 250mV
3. The rated current as listed is the rms or heating current that the part can withstand with acceptable temperature rise in typical applications. At the listed current the inductance typically drops to 85%-90% of the no load value when measured at 25°C. The inductance is guaranteed to be greater than 65% of the no load inductance value when measured at 25°C.
4. The temperature of the component (ambient plus temperature rise) must be within the stated operating temperature.
5. Parts come in tape and reel packaging. Pulse complies with industry standard tape and reel specification EIA481. The tape and reel for this product has a width (W=16mm) and pitch (P=12mm).

Mechanical

PA4305.XXXNL



Weight0.22 grams

Tape & Reel1500/reel

For More Information

Pulse Worldwide Headquarters

12220 World Trade Drive
San Diego, CA 92128
U.S.A.

Tel: 858 674 8100
Fax: 858 674 8262

Pulse Europe

Zeppelinstrasse 15
71083 Herrenberg
Germany

Tel: 49 7032 7806 0
Fax: 49 7032 7806 12

Pulse China Headquarters

B402, Shenzhen Academy of
Aerospace Technology Bldg.
10th Kejinan Road
High-Tech Zone
Nanshan District
Shenzhen, PR China 518057

Tel: 86 755 33966678
Fax: 86 755 33966700

Pulse North China

Room 2704/2705
Super Ocean Finance Ctr.
2067 Yan An Road West
Shanghai 200336
China

Tel: 86 21 62787060
Fax: 86 2162786973

Pulse South Asia

135 Joo Seng Road
#03-02
PM Industrial Bldg.
Singapore 368363

Tel: 65 6287 8998
Fax: 65 6287 8998

Pulse North Asia

3F, No. 198
Zhongyuan Road
Zhongli City
Taoyuan County 320
Taiwan R. O. C.

Tel: 886 3 4356768
Fax: 886 3 4356823 (Pulse)
Fax: 886 3 4356820 (FRE)

Performance warranty of products offered on this data sheet is limited to the parameters specified. Data is subject to change without notice. Other brand and product names mentioned herein may be trademarks or registered trademarks of their respective owners. © Copyright, 2015. Pulse Electronics, Inc. All rights reserved.

OUR CERTIFICATE

DiGi provide top-quality products and perfect service for customer worldwide through standardization, technological innovation and continuous improvement. DiGi through third-party certification, we strictly control the quality of products and services. Welcome your RFQ to

Email: Info@DiGi-Electronics.com



Tel: +00 852-30501935

RFQ Email: Info@DiGi-Electronics.com

DiGi is a global authorized distributor of electronic components.