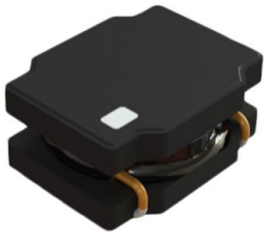


PA4335.331NLT Datasheet

www.digi-electronics.com



<https://www.DiGi-Electronics.com>

DiGi Electronics Part Number	PA4335.331NLT-DG
Manufacturer	Pulse Electronics
Manufacturer Product Number	PA4335.331NLT
Description	FIXED IND 330NH 3.7A 28MOHM SMD
Detailed Description	330 nH Shielded Drum Core, Wirewound Inductor 3.7 A 28mOhm Max Nonstandard



Tel: +00 852-30501935

RFQ Email: Info@DiGi-Electronics.com

DiGi is a global authorized distributor of electronic components.

Purchase and inquiry

Manufacturer Product Number:

PA4335.331NLT

Series:

PA4335.XXXNLT

Type:

Drum Core, Wirewound

Inductance:

330 nH

Current Rating (Amps):

3.7 A

Shielding:

Shielded

Q @ Freq:

-

Ratings:

-

Inductance Frequency - Test:

1 MHz

Mounting Type:

Surface Mount

Supplier Device Package:

-

Height - Seated (Max):

0.047" (1.20mm)

Manufacturer:

Pulse Electronics

Product Status:

Active

Material - Core:

Iron

Tolerance:

±20%

Current - Saturation (Isat):

5A

DC Resistance (DCR):

28mOhm Max

Frequency - Self Resonant:

104MHz

Operating Temperature:

-40°C ~ 125°C

Features:

-

Package / Case:

Nonstandard

Size / Dimension:

0.106" L x 0.087" W (2.70mm x 2.20mm)

Environmental & Export classification

RoHS Status:

ROHS3 Compliant

REACH Status:

REACH Unaffected

HTSUS:

8504.50.4000

Moisture Sensitivity Level (MSL):

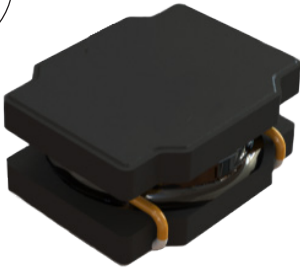
1 (Unlimited)

ECCN:

EAR99

SMT Power Inductor

Shielded Drum Core - PA4335.XXXNLT Series



- Ⓜ Height: 1.2mm Max
- Ⓜ Footprint: 2.7mm x 2.2mm Max
- Ⓜ Current Rating: up to 4.05A
- Ⓜ Inductance Range: 0.24uH to 10uH
- Ⓜ Shielded magnetic circuit reduces leakage flux, Fe base metal core enables high saturation and metalized core termination results in excellent shock resistance.

Electrical Specifications @ 25°C - Operating Temperature -40°C to +125°C

Part Number	Inductance 1MHz, 1V uH	Rated Current A	Min. Self-Resonant Frequency MHz	DC Resistance		Saturation Current (20°C) A	Heating Current
				MAX.	TYP.		$\Delta T \approx 40^\circ\text{C}$
				mΩ	mΩ		A
PA4335.241NLT	0.24	4.05	117	23	19	6.50	4.05
PA4335.331NLT	0.33	3.70	104	28	23	5.00	3.70
PA4335.471NLT	0.47	3.45	89	35	29	4.70	3.45
PA4335.681NLT	0.68	3.15	67	43	36	3.50	3.15
PA4335.102NLT	1.0	3.00	52	54	48	3.60	3.00
PA4335.152NLT	1.5	2.40	38	72	60	2.90	2.40
PA4335.222NLT	2.2	1.90	32	120	100	2.60	1.90
PA4335.222YNLT	2.2	2.10	36	102	85	2.30	2.10
PA4335.332NLT	3.3	1.7	25	163	136	1.70	1.80
PA4335.472NLT	4.7	1.25	23	260	225	1.60	1.25
PA4335.682NLT	6.8	0.95	16	366	305	1.15	0.95
PA4335.103NLT	10	0.85	14	480	435	1.10	0.85

Notes:

- Actual temperature of the component during system operation (ambient plus temperature rise) must be within the standard operating range.
- The rated current as listed is either the saturation current (@ 20°C) or the heating current ($\Delta T \approx 40^\circ\text{C}$) depending on which value is lower.
- The saturation current is the current at which the initial inductance drops approximately 30% at the stated ambient temperature. This current is determined by placing the component in the specified ambient environment and applying a short duration pulse current (to eliminate self-heating effect) to the component.
- The heating current is the DC current required to raise the component temperature by approximately 40°C. Take note that the components' performance varies depending on the system condition. It is suggested that the component be tested at the system level, to verify the temperature rise of the component during system operation.
- Maximum voltage across terminals to be limited to <40Vdc

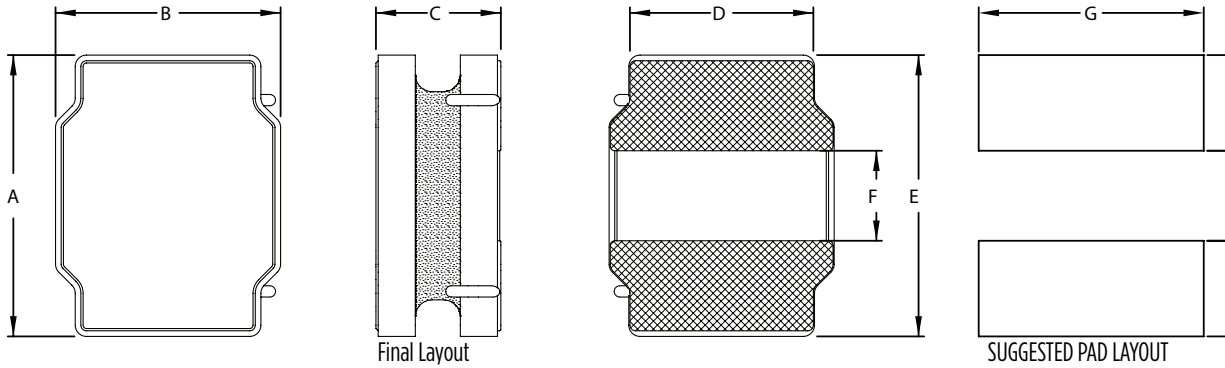
SMT Power Inductor

Shielded Drum Core - PA4335.XXXNLT Series



Mechanical

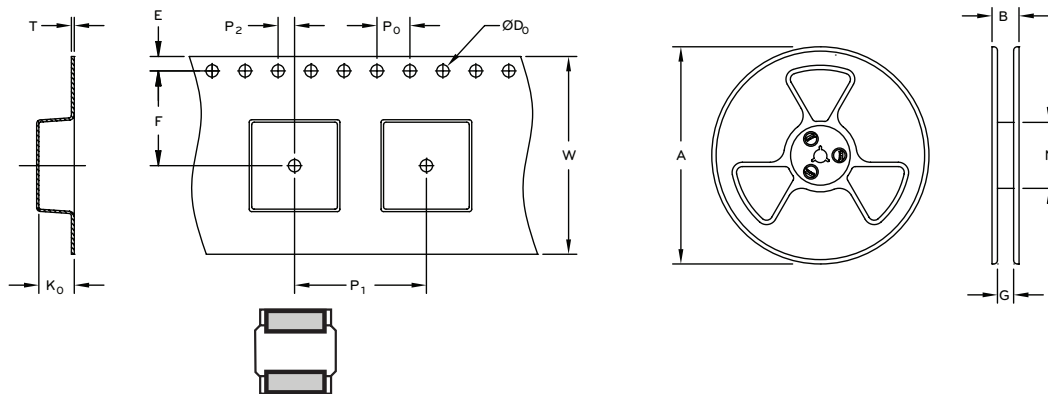
PA4335.XXXNLT



Series	A	B	C	D	E	F	G	H	J
PA4335.XXXNLT	2.7 MAX	2.2 MAX	1.2 MAX	(1.65)	(2.4)	(0.8)	(2.0)	(0.85)	(0.8)

All Dimensions in mm.

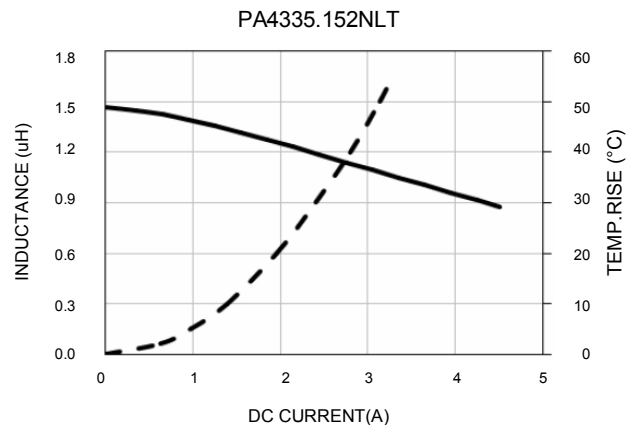
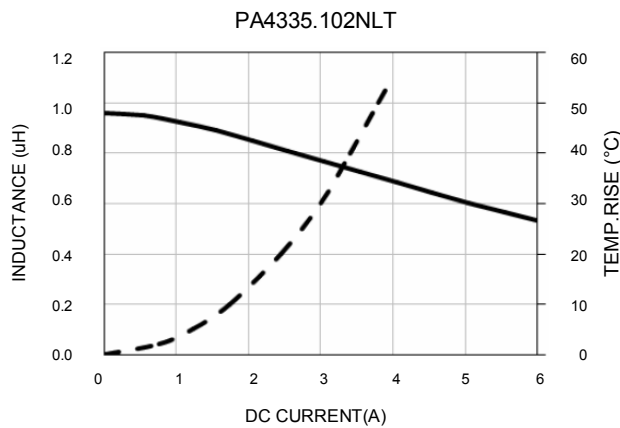
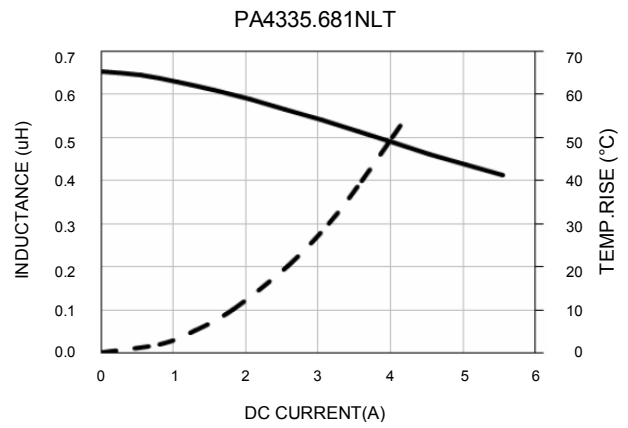
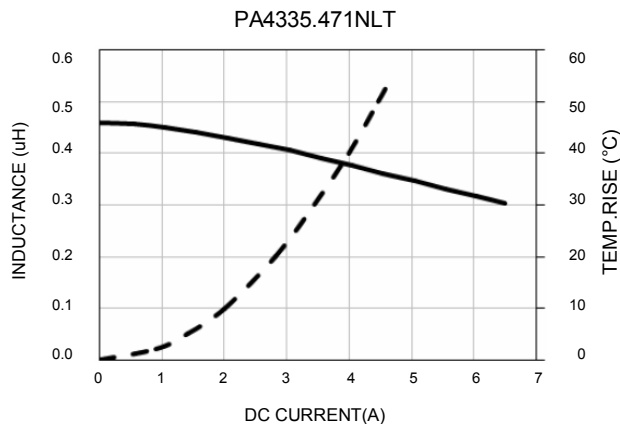
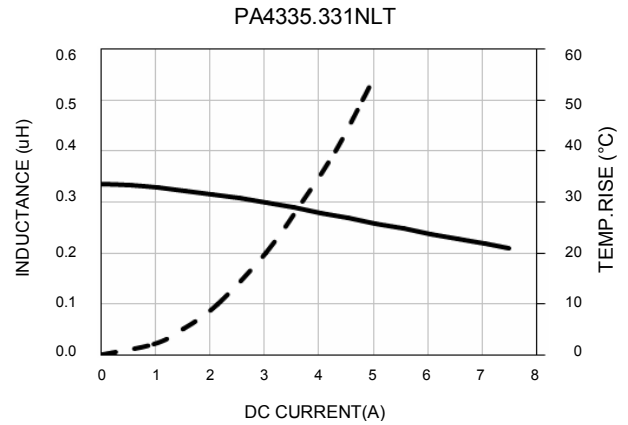
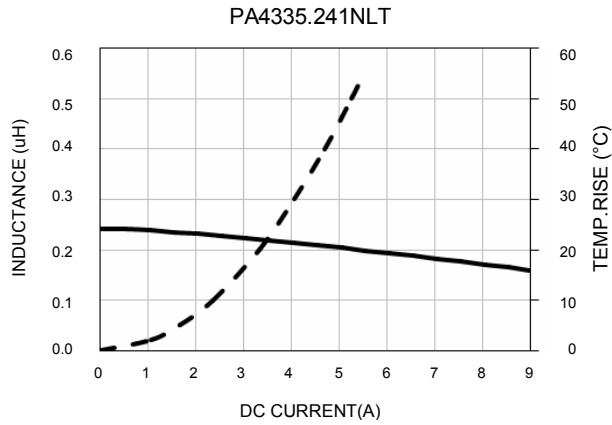
TAPE & REEL INFO



SURFACE MOUNTING TYPE, REEL/TAPE LIST

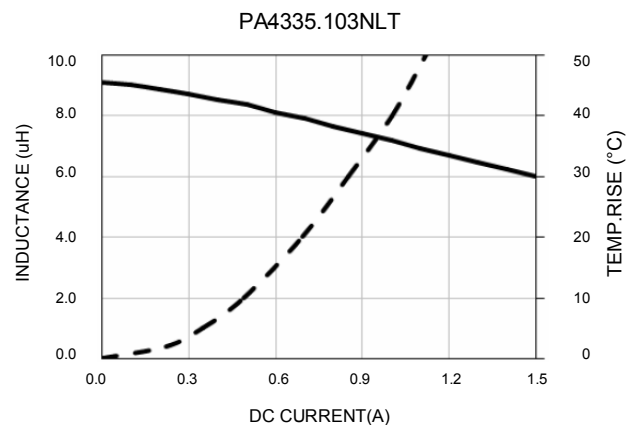
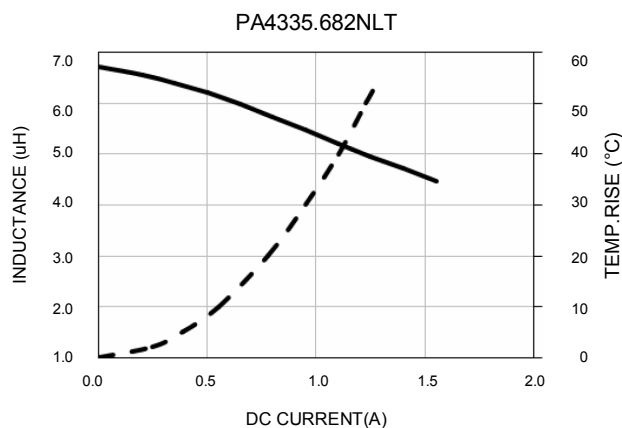
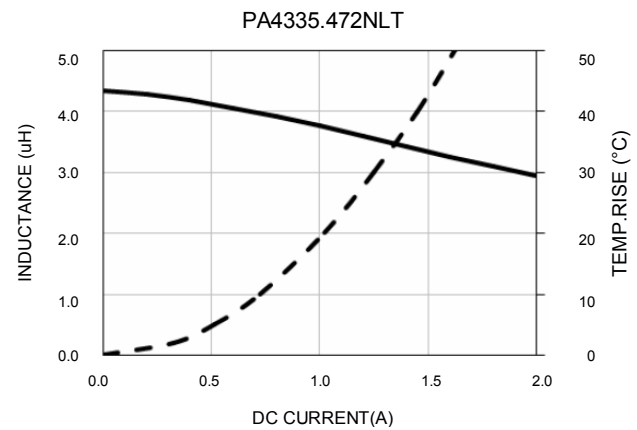
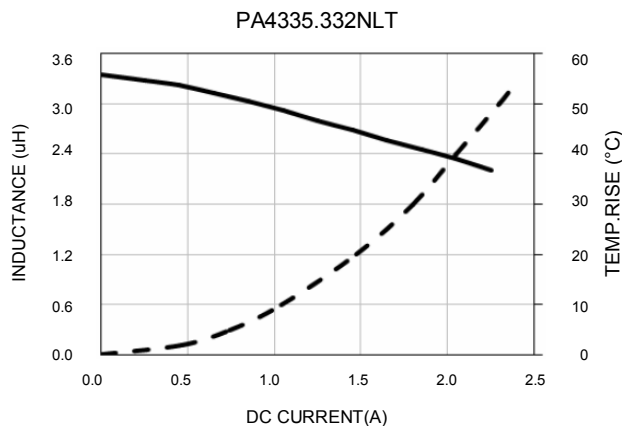
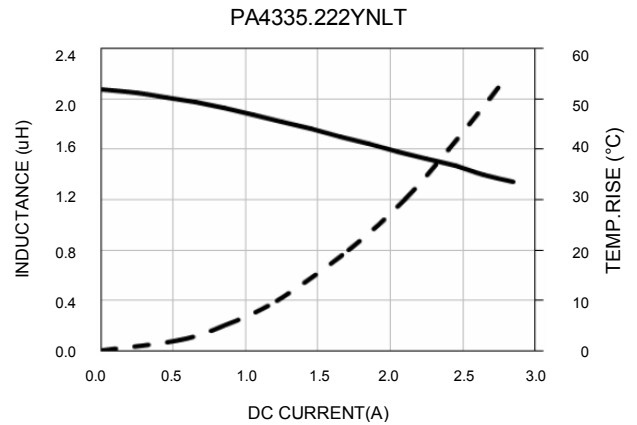
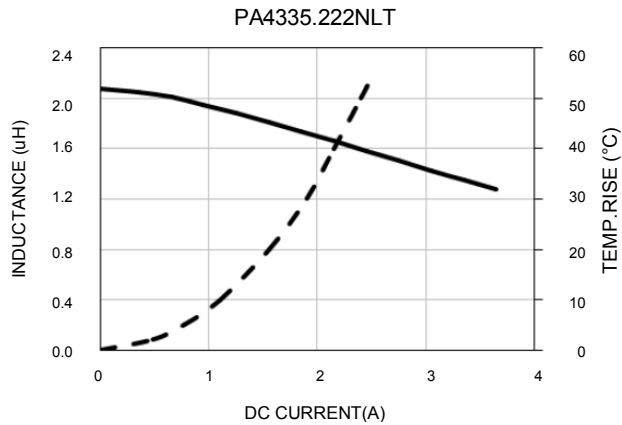
	REEL SIZE (mm)				TAPE SIZE (mm)								QTY	
	A	B	G	N	E	F	D ₀	P ₁	P ₀	P ₂	W	T	K ₀	PCS/REEL
PA4335.XXXNLT	Ø178	14.4	8.4	58	1.75	3.5	1.5	4	4	2	8	0.25	1.55	2000

Typical Performance Curves



SMT Power Inductor

Shielded Drum Core - PA4335.XXXNLT Series



For More Information

Americas - prodinfo_power_americas@yageo.com | Europe - prodinfo_power_emea@yageo.com | Asia - prodinfo_power_asia@yageo.com

Performance warranty of products offered on this data sheet is limited to the parameters specified. Data is subject to change without notice. Other brand and product names mentioned herein may be trademarks or registered trademarks of their respective owners. © Copyright, 2023. Pulse Electronics, Inc. All rights reserved.

YAGEO Corporation and its affiliates do not recommend the use of commercial or automotive grade products for high reliability applications or manned space flight.

OUR CERTIFICATE

DiGi provide top-quality products and perfect service for customer worldwide through standardization, technological innovation and continuous improvement. DiGi through third-party certification, we stricly control the quality of products and services. Welcome your RFQ to

Email: Info@DiGi-Electronics.com



Tel: +00 852-30501935

RFQ Email: Info@DiGi-Electronics.com

DiGi is a global authorized distributor of electronic components.