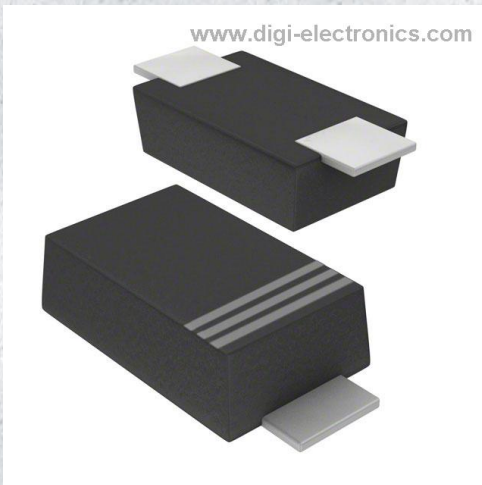


RB060MM-60TFTR Datasheet



<https://www.DiGi-Electronics.com>

DiGi Electronics Part Number	RB060MM-60TFTR-DG
Manufacturer	Rohm Semiconductor
Manufacturer Product Number	RB060MM-60TFTR
Description	RB060MM-60TF IS THE HIGH RELIABI
Detailed Description	Diode 60 V 2A Surface Mount PMDU

This model RB060MM-60TFTR is available at DiGi Electronics.

DiGi Electronics offers a global database of semiconductor and electronic component datasheets.

We welcome your inquiries regarding pricing, lead time, or other product-related questions.

 [Request a Quote](#)

 [Datasheet Search](#)



Tel: +00 852-30501935

RFQ Email: Info@DiGi-Electronics.com

DiGi is a global authorized distributor of electronic components.

Purchase and inquiry

Manufacturer Product Number:

RB060MM-60TFTR

Series:

-

Technology:

Schottky

Current - Average Rectified (Io):

2A

Speed:

Fast Recovery =< 500ns, > 200mA (Io)

Capacitance @ Vr, F:

-

Qualification:

AEC-Q101

Package / Case:

SOD-123F

Operating Temperature - Junction:

150°C (Max)

Manufacturer:

Rohm Semiconductor

Product Status:

Not For New Designs

Voltage - DC Reverse (Vr) (Max):

60 V

Voltage - Forward (Vf) (Max) @ If:

610 mV @ 2 A

Current - Reverse Leakage @ Vr:

50 µA @ 60 V

Grade:

Automotive

Mounting Type:

Surface Mount

Supplier Device Package:

PMDU

Base Product Number:

RB060

Environmental & Export classification

RoHS Status:

ROHS3 Compliant

REACH Status:

REACH Unaffected

HTSUS:

8541.10.0080

Moisture Sensitivity Level (MSL):

1 (Unlimited)

ECCN:

EAR99

OUR CERTIFICATE

DiGi provide top-quality products and perfect service for customer worldwide through standardization, technological innovation and continuous improvement. DiGi through third-party certification, we stricly control the quality of products and services. Welcome your RFQ to

Email: Info@DiGi-Electronics.com



Tel: +00 852-30501935

RFQ Email: Info@DiGi-Electronics.com

DiGi is a global authorized distributor of electronic components.