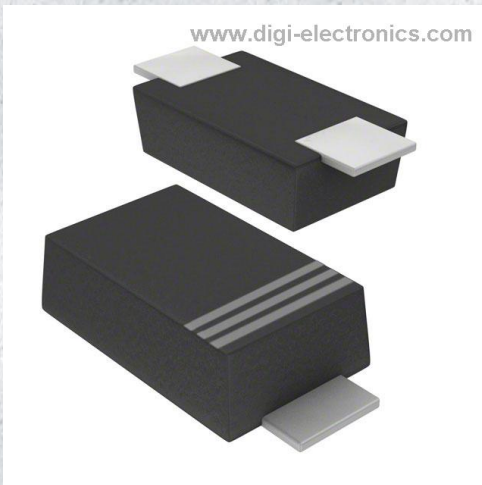


RB160MM-90TR Datasheet



<https://www.DiGi-Electronics.com>

DiGi Electronics Part Number	RB160MM-90TR-DG
Manufacturer	Rohm Semiconductor
Manufacturer Product Number	RB160MM-90TR
Description	DIODE SCHOTTKY 90V 1A PMDU
Detailed Description	Diode 90 V 1A Surface Mount PMDU

This model RB160MM-90TR is available at DiGi Electronics.

DiGi Electronics offers a global database of semiconductor and electronic component datasheets.

We welcome your inquiries regarding pricing, lead time, or other product-related questions.

 [Request a Quote](#)

 [Datasheet Search](#)



Tel: +00 852-30501935

RFQ Email: Info@DiGi-Electronics.com

DiGi is a global authorized distributor of electronic components.

Purchase and inquiry

Manufacturer Product Number:

RB160MM-90TR

Series:

-

Technology:

Schottky

Current - Average Rectified (Io):

1A

Speed:

Fast Recovery =< 500ns, > 200mA (Io)

Capacitance @ Vr, F:

-

Package / Case:

SOD-123F

Operating Temperature - Junction:

150°C (Max)

Manufacturer:

Rohm Semiconductor

Product Status:

Active

Voltage - DC Reverse (Vr) (Max):

90 V

Voltage - Forward (Vf) (Max) @ If:

730 mV @ 1 A

Current - Reverse Leakage @ Vr:

100 µA @ 90 V

Mounting Type:

Surface Mount

Supplier Device Package:

PMDU

Base Product Number:

RB160

Environmental & Export classification

RoHS Status:

ROHS3 Compliant

REACH Status:

REACH Unaffected

HTSUS:

8541.10.0080

Moisture Sensitivity Level (MSL):

1 (Unlimited)

ECCN:

EAR99

OUR CERTIFICATE

DiGi provide top-quality products and perfect service for customer worldwide through standardization, technological innovation and continuous improvement. DiGi through third-party certification, we stricly control the quality of products and services. Welcome your RFQ to

Email: Info@DiGi-Electronics.com



Tel: +00 852-30501935

RFQ Email: Info@DiGi-Electronics.com

DiGi is a global authorized distributor of electronic components.