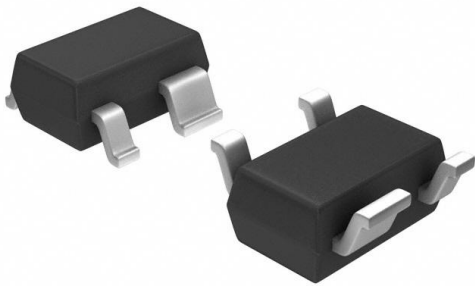


RB481KFSTL Datasheet

www.digi-electronics.com



<https://www.DiGi-Electronics.com>

DiGi Electronics Part Number	RB481KFSTL-DG
Manufacturer	Rohm Semiconductor
Manufacturer Product Number	RB481KFSTL
Description	DIODE ARR SCHOTT 30V 200MA UMD4
Detailed Description	Diode Array 2 Independent 30 V 200mA Surface Mount SC-82A, SOT-343

This model RB481KFSTL is available at DiGi Electronics.

DiGi Electronics offers a global database of semiconductor and electronic component datasheets.

We welcome your inquiries regarding pricing, lead time, or other product-related questions.

 [Request a Quote](#)

 [Datasheet Search](#)



Tel: +00 852-30501935

RFQ Email: Info@DiGi-Electronics.com

DiGi is a global authorized distributor of electronic components.

Purchase and inquiry

Manufacturer Product Number:

RB481KFSTL

Series:

-

Diode Configuration:

2 Independent

Voltage - DC Reverse (Vr) (Max):

30 V

Voltage - Forward (Vf) (Max) @ If:

500 mV @ 200 mA

Current - Reverse Leakage @ Vr:

30 μ A @ 10 V

Mounting Type:

Surface Mount

Supplier Device Package:

UMD4

Manufacturer:

Rohm Semiconductor

Product Status:

Not For New Designs

Technology:

Schottky

Current - Average Rectified (Io) (per Diode):

200mA

Speed:

Small Signal \leq 200mA (Io), Any Speed

Operating Temperature - Junction:

125°C (Max)

Package / Case:

SC-82A, SOT-343

Base Product Number:

RB481

Environmental & Export classification

RoHS Status:

ROHS3 Compliant

REACH Status:

REACH Unaffected

HTSUS:

8541.10.0070

Moisture Sensitivity Level (MSL):

1 (Unlimited)

ECCN:

EAR99

OUR CERTIFICATE

DiGi provide top-quality products and perfect service for customer worldwide through standardization, technological innovation and continuous improvement. DiGi through third-party certification, we stricly control the quality of products and services. Welcome your RFQ to

Email: Info@DiGi-Electronics.com



Tel: +00 852-30501935

RFQ Email: Info@DiGi-Electronics.com

DiGi is a global authorized distributor of electronic components.