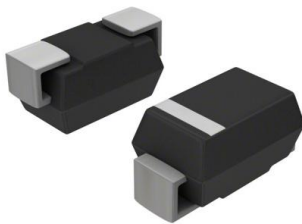


SMBJ10E3/TR13 Datasheet

www.digi-electronics.com



<https://www.DiGi-Electronics.com>

DiGi Electronics Part Number	SMBJ10E3/TR13-DG
Manufacturer	Microchip Technology
Manufacturer Product Number	SMBJ10E3/TR13
Description	TVS DIODE 10VWM 18.8VC SMBJ
Detailed Description	18.8V Clamp 31.9A Ipp Tvs Diode Surface Mount SM BJ (DO-214AA)

This model SMBJ10E3/TR13 is available at DiGi Electronics.

DiGi Electronics offers a global database of semiconductor and electronic component datasheets.

We welcome your inquiries regarding pricing, lead time, or other product-related questions.

 [Request a Quote](#)

 [Datasheet Search](#)



Tel: +00 852-30501935

RFQ Email: Info@DiGi-Electronics.com

DiGi is a global authorized distributor of electronic components.

Purchase and inquiry

Manufacturer Product Number:

SMBJ10E3/TR13

Series:

-

Type:

Zener

Voltage - Reverse Standoff (Typ):

10V

Voltage - Clamping (Max) @ Ipp:

18.8V

Power - Peak Pulse:

600W

Applications:

General Purpose

Operating Temperature:

-65°C ~ 150°C (TJ)

Package / Case:

DO-214AA, SMB

Base Product Number:

SMBJ10

Manufacturer:

Microchip Technology

Product Status:

Active

Unidirectional Channels:

1

Voltage - Breakdown (Min):

11.1V

Current - Peak Pulse (10/1000µs):

31.9A

Power Line Protection:

No

Capacitance @ Frequency:

-

Mounting Type:

Surface Mount

Supplier Device Package:

SMBJ (DO-214AA)

Environmental & Export classification

RoHS Status:

ROHS3 Compliant

REACH Status:

REACH Unaffected

HTSUS:

8541.10.0080

Moisture Sensitivity Level (MSL):

1 (Unlimited)

ECCN:

EAR99

OUR CERTIFICATE

DiGi provide top-quality products and perfect service for customer worldwide through standardization, technological innovation and continuous improvement. DiGi through third-party certification, we stricly control the quality of products and services. Welcome your RFQ to

Email: Info@DiGi-Electronics.com



Tel: +00 852-30501935

RFQ Email: Info@DiGi-Electronics.com

DiGi is a global authorized distributor of electronic components.