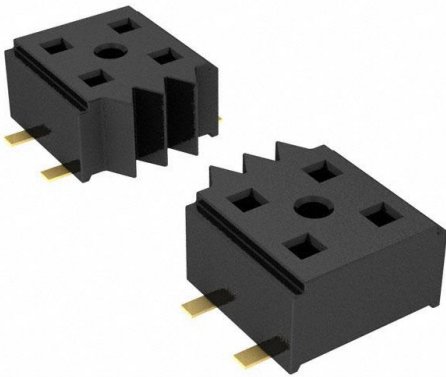


CLT-112-02-G-D-K Datasheet

www.digi-electronics.com



<https://www.DiGi-Electronics.com>

| | |
|------------------------------|---|
| DiGi Electronics Part Number | CLT-112-02-G-D-K-DG |
| Manufacturer | Samtec Inc. |
| Manufacturer Product Number | CLT-112-02-G-D-K |
| Description | CONN RCPT 24POS 0.079 GOLD SMD |
| Detailed Description | 24 Position Receptacle Connector 0.079" (2.00mm) Surface Mount Gold |

This model CLT-112-02-G-D-K is available at DiGi.Electronics.

DiGi Electronics offers a global database of semiconductor and electronic component datasheets.

We welcome your inquiries regarding pricing, lead time, or other product-related questions.

 [Request a Quote](#)

 [Datasheet Search](#)



Tel: +00 852-30501935

RFQ Email: Info@DiGi-Electronics.com

DiGi is a global authorized distributor of electronic components.

Purchase and inquiry

Manufacturer Product Number:

CLT-112-02-G-D-K

Series:

CLT

Connector Type:

Receptacle

Style:

Board to Board

Number of Positions Loaded:

All

Number of Rows:

2

Mounting Type:

Surface Mount

Fastening Type:

Push-Pull

Contact Finish Thickness - Mating:

10.0µin (0.25µm)

Insulation Height:

0.083" (2.10mm)

Operating Temperature:

-55°C ~ 125°C

Contact Finish - Post:

Gold

Ingress Protection:

-

Current Rating (Amps):

4.1A per Contact

Applications:

-

Contact Shape:

Square

Contact Finish Thickness - Post:

3.00µin (0.076µm)

Manufacturer:

Samtec Inc.

Product Status:

Active

Contact Type:

Female Socket

Number of Positions:

24

Pitch - Mating:

0.079" (2.00mm)

Row Spacing - Mating:

0.079" (2.00mm)

Termination:

Solder

Contact Finish - Mating:

Gold

Insulation Color:

Black

Contact Length - Post:

-

Material Flammability Rating:

UL94 V-0

Mated Stacking Heights:

-

Features:

Pick and Place

Voltage Rating:

-

Insulation Material:

Liquid Crystal Polymer (LCP)

Contact Material:

Phosphor Bronze

Base Product Number:

CLT-112

Environmental & Export classification

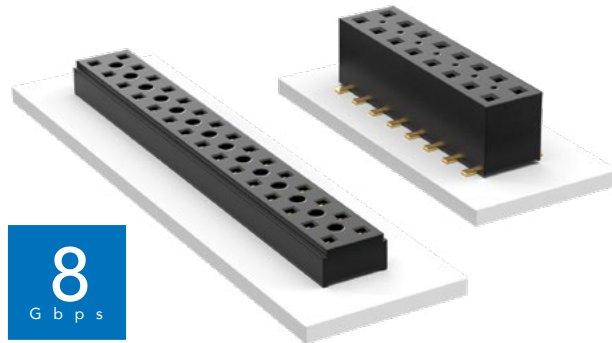
DiGi is a global authorized distributor of electronic components.

RoHS Status:

Moisture Sensitivity Level (MSL):

COST-EFFECTIVE & DUAL WIPE SOCKETS

(2.00 mm) .0787" PITCH • TLE/CLT SERIES



TLE

Mates:
TMMH, TMM, MTMM,
MMT, TW, LTMM, ZLTMM,
TCMD, TSH

CLT

Mates:
TMM, TMMH, MTMM,
MMT, TW, TSH

SPECIFICATIONS

TLE

Insulator Material:
Black Liquid Crystal Polymer
Contact Material:
Phosphor Bronze
Plating:
Au over 50 μ" (1.27 μm) Ni
Current Rating (TLE/TMMH):
3.2 A per pin
(2 pins powered)
Operating Temp Range:
-55 °C to +125 °C
Insertion Depth:
(2.08 mm) .082" to
(4.37 mm) .172" with
(0.38 mm) .015" wipe,
pass-through, or
(3.35 mm) .132" min
for bottom entry

CLT

Same as TLE except:
Plating:
Sn or Au over 50 μ" (1.27 μm) Ni
Current Rating (TMMH/CLT):
4.1 A per pin
(2 pins powered)
Insertion Depth:
Top Entry=
(1.40 mm) .055" minimum
Bottom Entry=
(2.57 mm) .101" minimum
(add board thickness for
correct post OAL)
Max Cycles:
100 with 10 μ" (0.25 μm) Au

PROCESSING

TLE

Lead-Free Solderable:
Yes
SMT Lead Coplanarity:
(0.10 mm) .004" max (02-26)
(0.15 mm) .006" max (27-50)*
*(.004" stencil solution
may be available; contact
ipg@samtec.com)

CLT

Same as TLE except:
SMT Lead Coplanarity:
(0.10 mm) .004" max (02-25)
(0.15 mm) .006" max (26-34)*
(0.20 mm) .008" max (35-50)*
*(.004" stencil solution
may be available; contact
ipg@samtec.com)

Note:
Some lengths, styles and
options are non-standard,
non-returnable.

| | | | | | | |
|-----|-----|------------------|------|----------------|------|---------|
| TLE | - 1 | NO. PINS PER ROW | - 01 | PLATING OPTION | - DV | OPTIONS |
|-----|-----|------------------|------|----------------|------|---------|



02 thru 50

-G
= 10 μ" (0.25 μm)
Gold

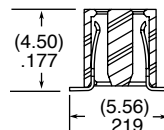
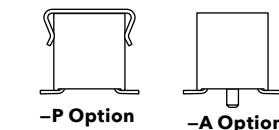
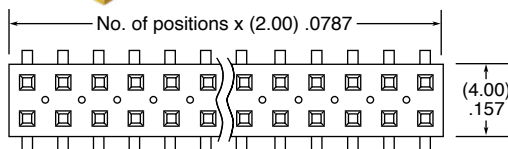
-A
= Alignment Pin
(3 positions minimum)

-K
= (5.00 mm) .197" DIA
Polyimide Film Pick & Place Pad
(3 positions minimum)

-P
= Metal Pick & Place Pad
(4 positions minimum)

-TR
= Tape & Reel Packaging
(2-37 positions only)

-FR
= Full Reel Tape & Reel
(must order maximum
quantity per reel; contact
Samtec for quantity breaks)
(2-37 positions only)



| | | | | | | |
|-----|-----|------------------|------------|----------------|-----|---------------|
| CLT | - 1 | NO. PINS PER ROW | LEAD STYLE | PLATING OPTION | - D | OTHER OPTIONS |
|-----|-----|------------------|------------|----------------|-----|---------------|



02 thru 50

-01
= Through-hole

-F
= Gold flash
on contact,
Matte Tin on tail

All options require
Style -02

-BE
= Bottom Entry
(Required for bottom
entry applications)

-A
= Alignment Pin
(3 positions minimum)
Metal or plastic at
Samtec's discretion

-K
= (5.00 mm) .197" DIA
Polyimide Film
Pick & Place Pad
(04 thru 50 only)

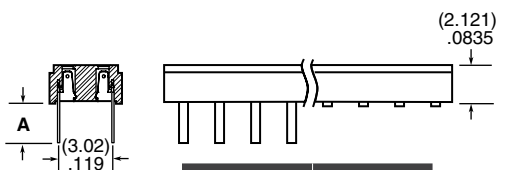
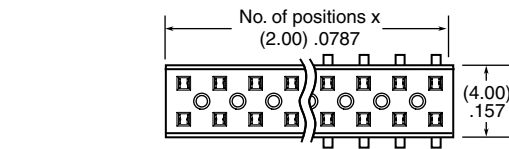
-P
= Pick & Place Pad
(4 positions minimum)
(Not always necessary
for auto placement.)

-TR
= Tape & Reel
(36 positions max)

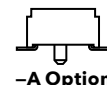
-FR
= Full Reel Tape & Reel
(must order maximum
quantity per reel;
contact Samtec for
quantity breaks)
(36 positions max)

ALSO AVAILABLE
MOQ Required

Other Platings



| LEAD STYLE | A |
|------------|-------------|
| -01 | (2.16) .085 |
| -03 | (2.95) .116 |



OUR CERTIFICATE

DiGi provide top-quality products and perfect service for customer worldwide through standardization, technological innovation and continuous improvement. DiGi through third-party certification, we stricly control the quality of products and services. Welcome your RFQ to

Email: Info@DiGi-Electronics.com



Tel: +00 852-30501935

RFQ Email: Info@DiGi-Electronics.com

DiGi is a global authorized distributor of electronic components.