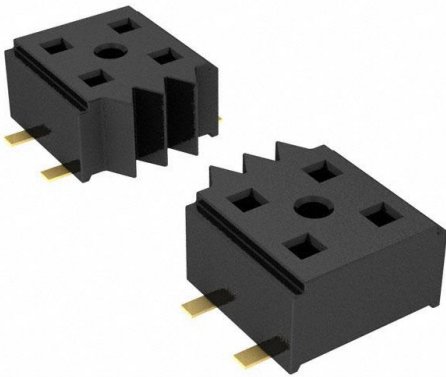


# CLT-112-02-G-D-TR Datasheet

[www.digi-electronics.com](http://www.digi-electronics.com)



<https://www.DiGi-Electronics.com>

DiGi Electronics Part Number	CLT-112-02-G-D-TR-DG
Manufacturer	<a href="#">Samtec Inc.</a>
Manufacturer Product Number	CLT-112-02-G-D-TR
Description	CONN RCPT 24POS 0.079 GOLD SMD
Detailed Description	24 Position Receptacle Connector 0.079" (2.00mm) Surface Mount Gold

This model CLT-112-02-G-D-TR is available at DiGi Electronics.

DiGi Electronics offers a global database of semiconductor and electronic component datasheets.

We welcome your inquiries regarding pricing, lead time, or other product-related questions.

 [Request a Quote](#)

 [Datasheet Search](#)



Tel: +00 852-30501935

RFQ Email: [Info@DiGi-Electronics.com](mailto:Info@DiGi-Electronics.com)

DiGi is a global authorized distributor of electronic components.

## Purchase and inquiry

Manufacturer Product Number:

CLT-112-02-G-D-TR

Series:

CLT

Connector Type:

Receptacle

Style:

Board to Board

Number of Positions Loaded:

All

Number of Rows:

2

Mounting Type:

Surface Mount

Fastening Type:

Push-Pull

Contact Finish Thickness - Mating:

10.0µin (0.25µm)

Insulation Height:

0.083" (2.10mm)

Operating Temperature:

-55°C ~ 125°C

Contact Finish - Post:

Gold

Ingress Protection:

-

Current Rating (Amps):

4.1A per Contact

Applications:

-

Contact Shape:

Square

Contact Finish Thickness - Post:

3.00µin (0.076µm)

Manufacturer:

Samtec Inc.

Product Status:

Active

Contact Type:

Female Socket

Number of Positions:

24

Pitch - Mating:

0.079" (2.00mm)

Row Spacing - Mating:

0.079" (2.00mm)

Termination:

Solder

Contact Finish - Mating:

Gold

Insulation Color:

Black

Contact Length - Post:

-

Material Flammability Rating:

UL94 V-0

Mated Stacking Heights:

-

Features:

-

Voltage Rating:

-

Insulation Material:

Liquid Crystal Polymer (LCP)

Contact Material:

Phosphor Bronze

Base Product Number:

CLT-112

## Environmental & Export classification

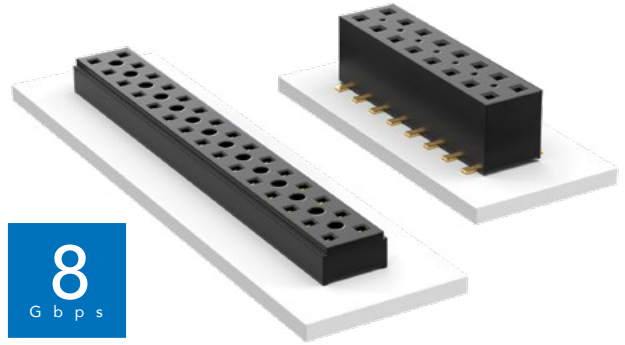
DiGi is a global authorized distributor of electronic components.

RoHS Status:

Moisture Sensitivity Level (MSL):

# COST-EFFECTIVE & DUAL WIPE SOCKETS

(2.00 mm) .0787" PITCH • TLE/CLT SERIES



**TLE**  
**Mates:**  
 TMMH, TMM, MTMM,  
 MMT, TW, LTMM, ZLTMM,  
 TCMD, TSH

**CLT**  
**Mates:**  
 TMM, TMMH, MTMM,  
 MMT, TW, TSH

## SPECIFICATIONS

**TLE**  
**Insulator Material:**  
 Black Liquid Crystal Polymer  
**Contact Material:**  
 Phosphor Bronze  
**Plating:**  
 Au over 50 μ" (1.27 μm) Ni  
**Current Rating (TLE/TMMH):**  
 3.2 A per pin  
 (2 pins powered)  
**Operating Temp Range:**  
 -55 °C to +125 °C  
**Insertion Depth:**  
 (2.08 mm) .082" to  
 (4.37 mm) .172" with  
 (0.38 mm) .015" wipe,  
 pass-through, or  
 (3.35 mm) .132" min  
 for bottom entry

**CLT**  
 Same as TLE except:  
**Plating:**  
 Sn or Au over 50 μ" (1.27 μm) Ni  
**Current Rating (TMMH/CLT):**  
 4.1 A per pin  
 (2 pins powered)  
**Insertion Depth:**  
 Top Entry=  
 (1.40 mm) .055" minimum  
 Bottom Entry=  
 (2.57 mm) .101" minimum  
 (add board thickness for  
 correct post OAL)  
**Max Cycles:**  
 100 with 10 μ" (0.25 μm) Au

## PROCESSING

**TLE**  
**Lead-Free Solderable:**  
 Yes  
**SMT Lead Coplanarity:**  
 (0.10 mm) .004" max (02-26)  
 (0.15 mm) .006" max (27-50)\*  
 \*(.004" stencil solution  
 may be available; contact  
 ipg@samtec.com)  
**CLT**  
 Same as TLE except:  
**SMT Lead Coplanarity:**  
 (0.10 mm) .004" max (02-25)  
 (0.15 mm) .006" max (26-34)\*  
 (0.20 mm) .008" max (35-50)\*  
 \*(.004" stencil solution  
 may be available; contact  
 ipg@samtec.com)

**Note:**  
 Some lengths, styles and  
 options are non-standard,  
 non-returnable.

<b>TLE</b>	<b>1</b>	<b>NO. PINS PER ROW</b>	<b>01</b>	<b>PLATING OPTION</b>	<b>DV</b>	<b>OPTIONS</b>
		<b>02 thru 50</b>			<b>-G</b> = 10 μ" (0.25 μm) Gold	<b>-A</b> = Alignment Pin (3 positions minimum) <b>-K</b> = (5.00 mm) .197" DIA Polyimide Film Pick & Place Pad (3 positions minimum) <b>-P</b> = Metal Pick & Place Pad (4 positions minimum) <b>-TR</b> = Tape & Reel Packaging (2-37 positions only) <b>-FR</b> = Full Reel Tape & Reel (must order maximum quantity per reel; contact Samtec for quantity breaks) (2-37 positions only)

<b>CLT</b>	<b>1</b>	<b>NO. PINS PER ROW</b>	<b>LEAD STYLE</b>	<b>PLATING OPTION</b>	<b>D</b>	<b>OTHER OPTIONS</b>
		<b>02 thru 50</b>	<b>-01</b> = Through-hole <b>-02</b> = Surface Mount <b>-03</b> = Through-hole	<b>-F</b> = Gold flash on contact, Matte Tin on tail <b>-L</b> = 10 μ" (0.25 μm) Gold on contact, Matte Tin on tail <b>-G</b> = 10 μ" (0.25 μm) Gold on contact, Gold flash on tail		All options require Style -02 <b>-BE</b> = Bottom Entry (Required for bottom entry applications) <b>-A</b> = Alignment Pin (3 positions minimum) Metal or plastic at Samtec's discretion <b>-K</b> = (5.00 mm) .197" DIA Polyimide Film Pick & Place Pad (04 thru 50 only) <b>-P</b> = Pick & Place Pad (4 positions minimum) (Not always necessary for auto placement.) <b>-TR</b> = Tape & Reel (36 positions max) <b>-FR</b> = Full Reel Tape & Reel (must order maximum quantity per reel; contact Samtec for quantity breaks) (36 positions max)

LEAD STYLE	A
-01	(2.16) .085
-03	(2.95) .116

## OUR CERTIFICATE

DiGi provide top-quality products and perfect service for customer worldwide through standardization, technological innovation and continuous improvement. DiGi through third-party certification, we stricly control the quality of products and services. Welcome your RFQ to

Email: [Info@DiGi-Electronics.com](mailto:Info@DiGi-Electronics.com)



Tel: +00 852-30501935

RFQ Email: [Info@DiGi-Electronics.com](mailto:Info@DiGi-Electronics.com)

DiGi is a global authorized distributor of electronic components.