

BS100C Datasheet



DiGi Electronics Part Number	BS100C-DG
Manufacturer	Sharp Microelectronics
Manufacturer Product Number	BS100C
Description	SENSOR PHOTODIODE 560NM SIDE
Detailed Description	Photodiode 560nm Side View

<https://www.DiGi-Electronics.com>

This model BS100C is available at DiGi Electronics.

DiGi Electronics offers a global database of semiconductor and electronic component datasheets.

We welcome your inquiries regarding pricing, lead time, or other product-related questions.

 [Request a Quote](#)

 [Datasheet Search](#)



Tel: +00 852-30501935

RFQ Email: Info@DiGi-Electronics.com

DiGi is a global authorized distributor of electronic components.

Purchase and inquiry

Manufacturer Product Number:

BS100C

Series:

-

Wavelength:

560nm

Spectral Range:

500nm ~ 600nm

Responsivity @ nm:

-

Voltage - DC Reverse (Vr) (Max):

10 V

Active Area:

1.55mm²

Operating Temperature:

-20°C ~ 60°C

Package / Case:

Side View

Manufacturer:

Sharp Microelectronics

Product Status:

Obsolete

Color - Enhanced:

Blue

Diode Type:

-

Response Time:

-

Current - Dark (Typ):

3pA

Viewing Angle:

-

Mounting Type:

Through Hole

Environmental & Export classification

RoHS Status:

RoHS non-compliant

ECCN:

EAR99

Moisture Sensitivity Level (MSL):

1 (Unlimited)

HTSUS:

8541.49.1050

BS100C Photodiode for Visible Light

T-41-51

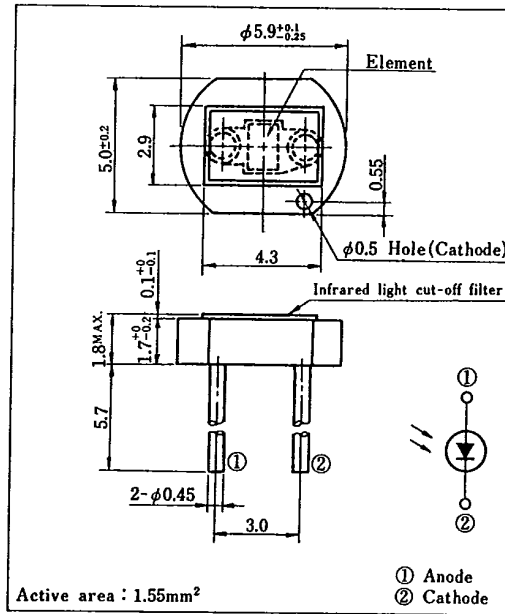
Features

- Wide dynamic range
(Capable of $E_v = 10^{-3} \sim 10^4 \ell x$ range measurement)
- Low dark current
(I_d : MAX. $10^{-11} A$ at $V_R = 1V$)
- Infrared light cut-off type

Applications

- AE (automatic exposure) system and ES (electronic shutter) system for cameras
- Precise optical instruments

Outline Dimensions (Unit : mm)



4

Absolute Maximum Ratings (T_a = 25°C)

Parameter	Symbol	Rating	Unit
Reverse voltage	V _R	10	V
Operating temperature	T _{opr}	-20 ~ +60	°C
Storage temperature	T _{stg}	-30 ~ +80	°C
*1 Soldering temperature	T _{sol}	260	°C

*1 For 5 seconds

Electro-optical Characteristics (T_a = 25°C)

Parameter	Symbol	Conditions	MIN.	TYP.	MAX.	Unit
**Short circuit current	I _{sc}	E _v = 100 ℓx	0.14	0.16	0.21	μA
**Short circuit current temperature coefficient	β _T	E _v = 100 ℓx	—	0.02	0.07	%/°C
Dark current	I _d	V _R = 1V	—	3 × 10 ⁻¹²	10 ⁻¹¹	A
Dark current temperature coefficient	α _T	V _R = 1V	—	3.5	5.0	times/10°C
Terminal capacitance	C _t	V _R = 0, f = 1MHz	—	—	500	pF
Peak sensitivity wavelength	λ _p		500	560	600	nm
**Spectral sensitivity infrared radiation ratio	ΔI _R		—	6	10	%

*2 E_v : Illuminance by CIE standard light source A (tungsten lamp)

*3 $\Delta I_R = \frac{I_{sc}(\lambda \geq 700nm)}{I_{sc}(\text{full wavelength})} \times 100\%$

Fig. 1 Short Circuit Current vs. Illuminance

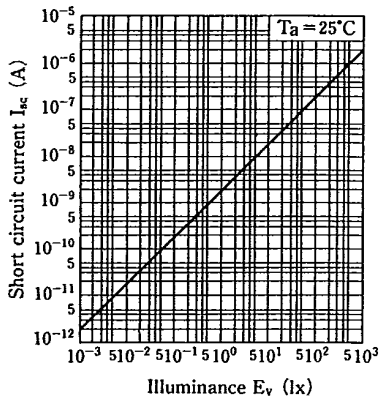


Fig. 2 Short Circuit Current vs. Ambient Temperature

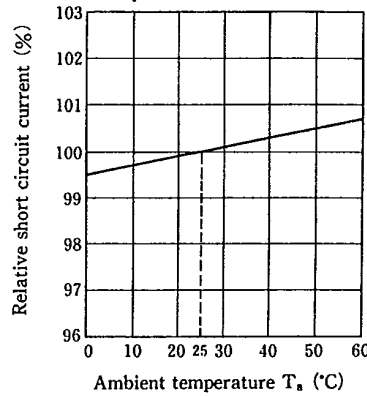


Fig. 3 Dark Current vs. Reverse Voltage

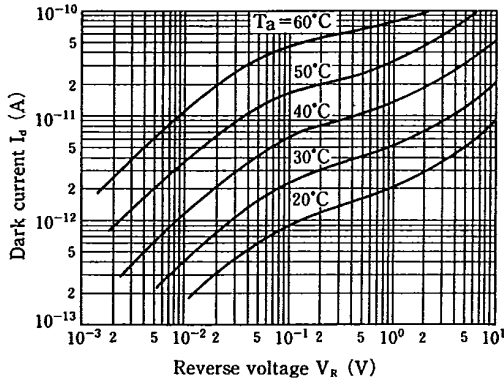


Fig. 4 Spectral Sensitivity

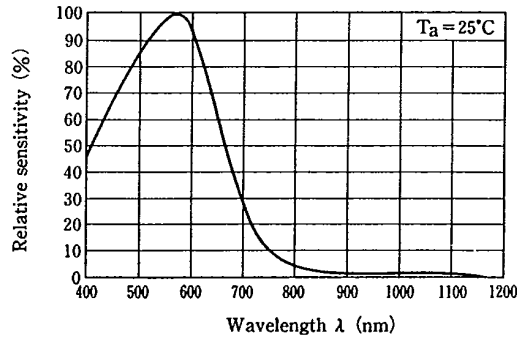
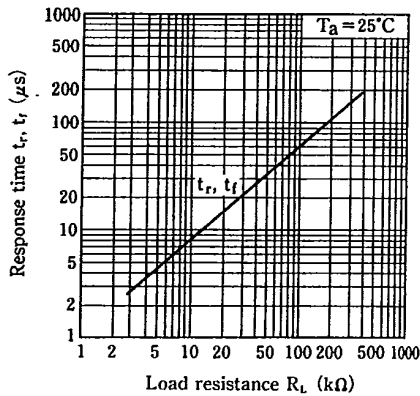
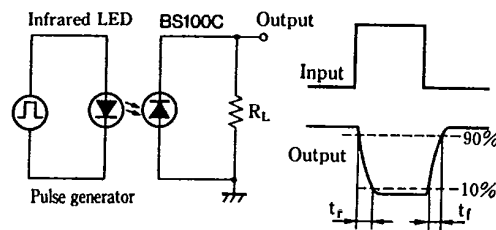


Fig. 5 Response Time vs. Load Resistance



Test Circuit for Response Time



OUR CERTIFICATE

DiGi provide top-quality products and perfect service for customer worldwide through standardization, technological innovation and continuous improvement. DiGi through third-party certification, we stricly control the quality of products and services. Welcome your RFQ to

Email: Info@DiGi-Electronics.com



Tel: +00 852-30501935

RFQ Email: Info@DiGi-Electronics.com

DiGi is a global authorized distributor of electronic components.