

# IS471F Datasheet



DiGi Electronics Part Number	IS471F-DG
Manufacturer	<a href="#">Sharp Microelectronics</a>
Manufacturer Product Number	IS471F
Description	LIGHT DETECTOR OPIC 940NM
Detailed Description	Optical Sensor 940nm Photo Detector, Logic Output Logic Radial - 4 Leads

<https://www.DiGi-Electronics.com>

This model IS471F is available at DiGi Electronics.

DiGi Electronics offers a global database of semiconductor and electronic component datasheets.

We welcome your inquiries regarding pricing, lead time, or other product-related questions.

 [Request a Quote](#)

 [Datasheet Search](#)



Tel: +00 852-30501935

RFQ Email: [Info@DiGi-Electronics.com](mailto:Info@DiGi-Electronics.com)

DiGi is a global authorized distributor of electronic components.

## Purchase and inquiry

Manufacturer Product Number:

IS471F

Series:

-

Wavelength:

940nm

Output Type:

Logic

Operating Temperature:

-25°C ~ 60°C (TA)

Manufacturer:

Sharp Microelectronics

Product Status:

Obsolete

Type:

Photo Detector, Logic Output

Package / Case:

Radial - 4 Leads

## Environmental & Export classification

RoHS Status:

RoHS non-compliant

ECCN:

EAR99

Moisture Sensitivity Level (MSL):

1 (Unlimited)

HTSUS:

8541.49.1050

# IS471F

## OPIC Light Detector with Built-in Signal Processing Circuit for Light Modulation System

### ■ Features

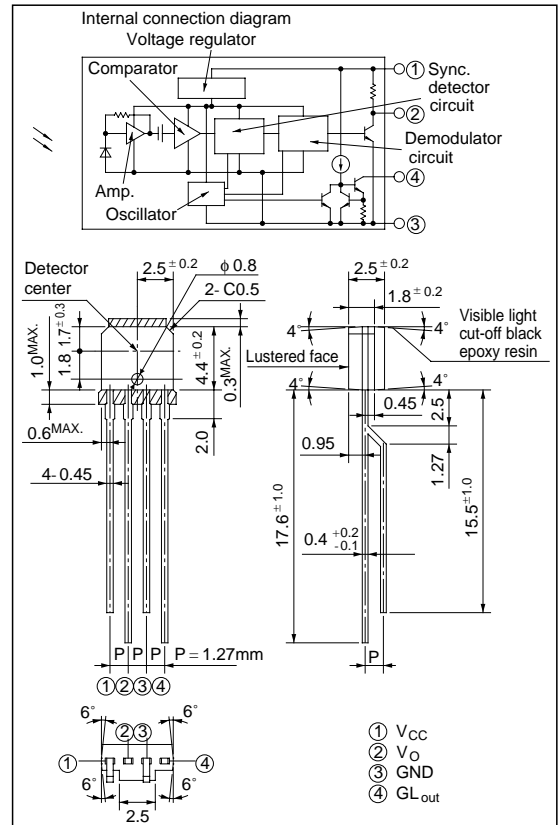
1. Impervious to external disturbing lights due to light modulation system
2. Built-in pulse driver circuit and sync. detector circuit on the emitter side
3. A wide range of operating supply voltage ( $V_{CC}$ : 4.5 to 16V)

### ■ Applications

1. Optoelectronic switches
2. Copiers, printers
3. Facsimiles

### ■ Outline Dimensions

(Unit : mm)



\*"OPIC" (Optical IC) is a trademark of the SHARP Corporation.  
An OPIC consists of a light-detecting element and signal-processing circuit integrated onto a single chip.

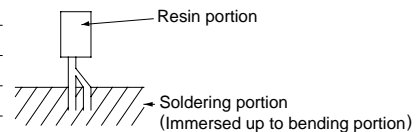
### ■ Absolute Maximum Ratings

(Ta= 25°C)

Parameter	Symbol	Rating	Unit	
Supply voltage	$V_{CC}$	-0.5 to 16	V	
Output	Output voltage	$V_O$	16	V
	Output current	$I_O$	50	mA
*1 GL output	Output voltage	$V_{GL}$	16	V
Power dissipation	P	250	mW	
Operating temperature	$T_{opr}$	-25 to +60	°C	
Storage temperature	$T_{stg}$	-40 to +100	°C	
*2 Soldering temperature	$T_{sol}$	260	°C	

\*1 Applies to  $GL_{out}$  terminal

\*2 For 5 seconds at the position shown in the right figure



## Electro-optical Characteristics

( $V_{CC}= 5V, T_a= 25^{\circ}C$ )

Parameter		Symbol	Conditions	MIN.	TYP.	MAX.	Unit
Operating supply voltage		$V_{CC}$	-	4.5	-	16	V
Supply current		$I_{CC}$	$V_0, GL_{out}$ terminals shall be opened.	-	3.5	7.0	mA
Output	Low level output voltage	$V_{OL}$	$I_{OL}= 16mA, E_{VP}= 500lx, E_{VD}= 0^{*3}$	-	0.15	0.35	V
	High level output voltage	$V_{OH}$	$E_{VD}= E_{VP}= 0^{*3}$	4.97	-	-	V
	Output short circuit current	$I_{OS}$	$E_{VP}= E_{VD}= 0^{*3}$	0.25	0.5	1.0	mA
GL output	Low level output current	$I_{GL}$	$V_{GL}= 1.2V$	40	55	70	mA
	<sup>*4</sup> Pulse cycle	$t_p$	-	70	130	220	$\mu s$
	<sup>*4</sup> Pulse width	$t_w$	-	4.4	8	13.7	$\mu s$
<sup>*5</sup> "Low→High" threshold irradiance		$E_{ePLH}$	$E_{eD}= 0^{*3}$ Light emitting diode ( $\lambda_p= 940nm$ ) <sup>*6</sup>	-	0.4	2.66	$\mu W/mm^2$
<sup>*5</sup> "High→Low" threshold irradiance		$E_{ePHL}$		-	0.7	2.8	$\mu W/mm^2$
Hysteresis		$E_{ePLH}/E_{ePHL}$		0.45	0.65	0.95	-
Response time	"High→Low" propagation delay time	$t_{PHL}$	<sup>*6</sup>	-	400	670	$\mu s$
	"Low→High" propagation delay time	$t_{PLH}$	<sup>*6</sup>	-	400	670	$\mu s$
<sup>*7</sup> External disturbing light illuminance		$E_{VDX}$	$E_{ep}= 7.5 \mu W/mm^2, ^{*3} \lambda_p= 940nm$	2000	7500	-	lx

<sup>\*3</sup>  $E_{eP}$  represents illuminance of signal light in sync with the low level timing of output at  $GL_{out}$  terminal.

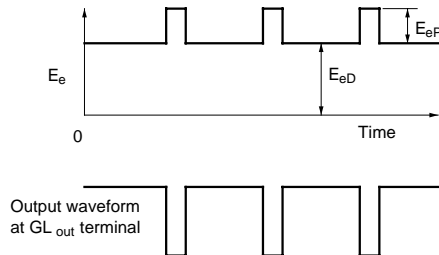
$E_{eD}$  represents illuminance of DC light. For detail, see Fig. 1.

Light source: Infrared light emitting diode ( $\lambda_p= 940nm$ )

$E_{VP}$  represents illuminance of signal light in sync with the low level timing of output at  $GL_{out}$  terminal.

$E_{VD}$  represents illuminance of DC light. Note that the light source is CIE standard light source A.

Fig.1



(Note) Fig. 1 shows the output waveform at  $GL_{out}$  terminal with **IS471F** connected as shown in Fig. 3.

<sup>\*4</sup> Pulse cycle ( $t_p$ ), pulse width ( $t_w$ ) are defined as shown in Fig. 2.

The waveform shown in Fig. 2 is the output voltage waveform at  $GL_{out}$  terminal with **IS471F** connected as shown in Fig. 3

Fig.2

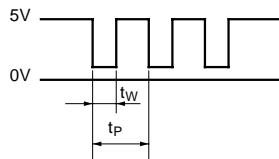
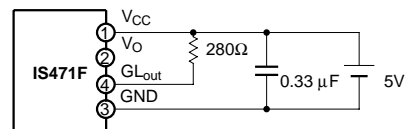


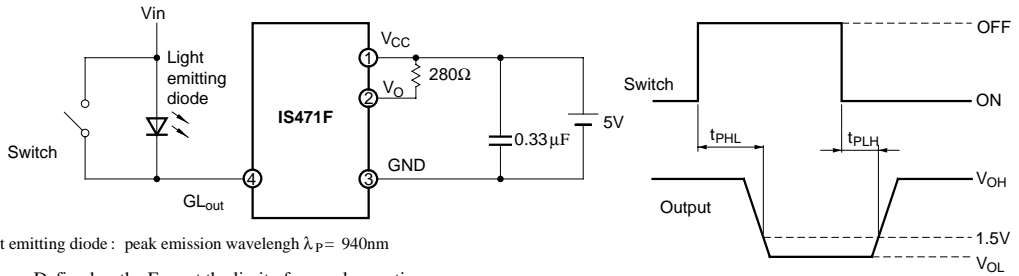
Fig.3



<sup>\*5</sup> Defined as  $E_{ep}$  that causes the output to go " Low to High" (or " High to Low" ).

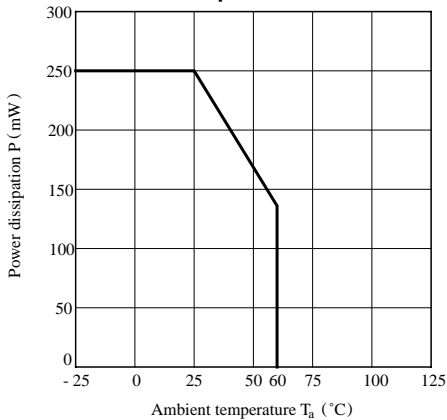
\*6 Test circuit for response time, threshold irradiance is shown in Fig. 4.

**Fig. 4**

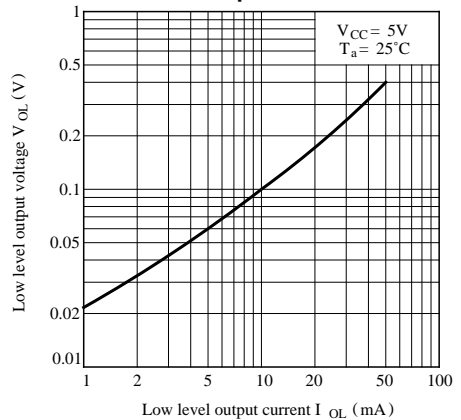


\*7  $E_{VDX}$ : Defined as the  $E_{VD}$  at the limit of normal operation range.

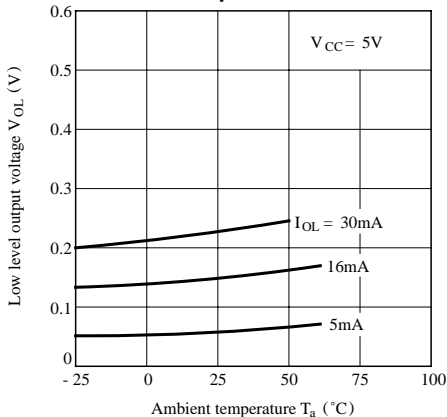
**Fig. 5 Power Dissipation vs. Ambient Temperature**



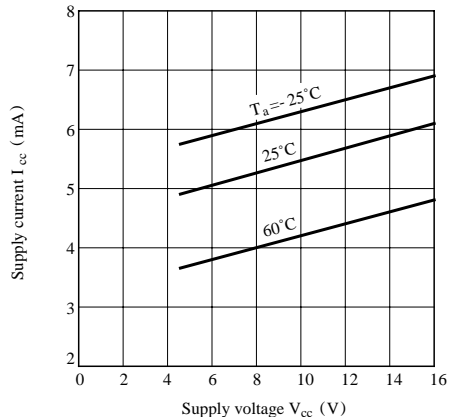
**Fig. 6 Low Level Output Voltage vs. Low Level Output Current**



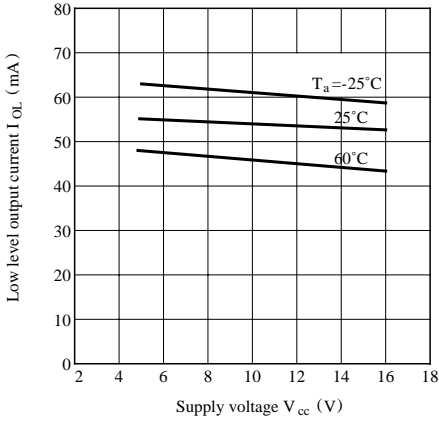
**Fig. 7 Low Level Output Voltage vs. Ambient Temperature**



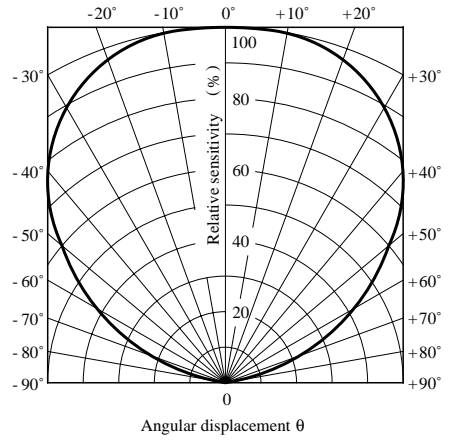
**Fig. 8 Supply Current vs. Supply Voltage**



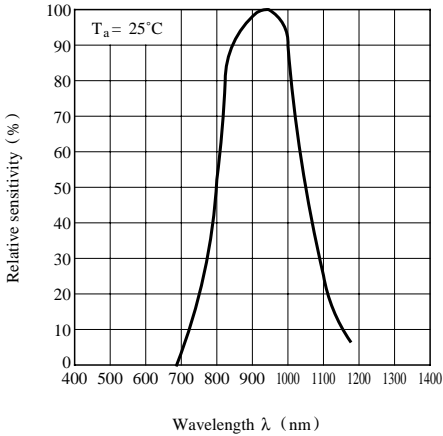
**Fig. 9 Low Level Output Current vs. Supply Voltage**



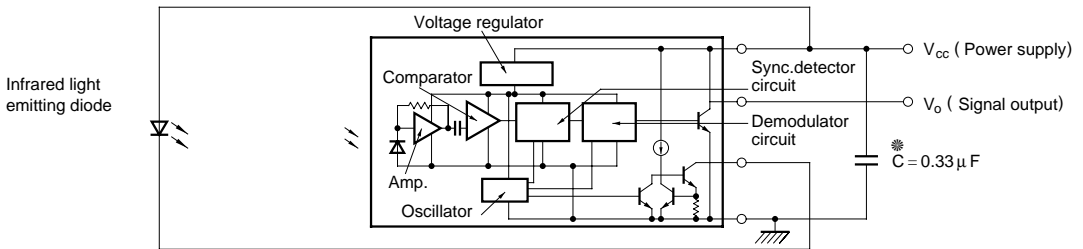
**Fig.10 Sensitivity Diagram ( $T_a = 25^\circ\text{C}$ )**



**Fig.11 Spectral Sensitivity**



■ **Basic Circuit**



※ In order to stabilize power supply line, connect a by-pass capacitor of 0.33 $\mu\text{F}$  or more between  $V_{cc}$  and GND near the device.

● Please refer to the chapter “Precautions for Use.”

**NOTICE**

- The circuit application examples in this publication are provided to explain representative applications of SHARP devices and are not intended to guarantee any circuit design or license any intellectual property rights. SHARP takes no responsibility for any problems related to any intellectual property right of a third party resulting from the use of SHARP's devices.
- Contact SHARP in order to obtain the latest device specification sheets before using any SHARP device. SHARP reserves the right to make changes in the specifications, characteristics, data, materials, structure, and other contents described herein at any time without notice in order to improve design or reliability. Manufacturing locations are also subject to change without notice.
- Observe the following points when using any devices in this publication. SHARP takes no responsibility for damage caused by improper use of the devices which does not meet the conditions and absolute maximum ratings to be used specified in the relevant specification sheet nor meet the following conditions:
  - (i) The devices in this publication are designed for use in general electronic equipment designs such as:
    - Personal computers
    - Office automation equipment
    - Telecommunication equipment [terminal]
    - Test and measurement equipment
    - Industrial control
    - Audio visual equipment
    - Consumer electronics
  - (ii) Measures such as fail-safe function and redundant design should be taken to ensure reliability and safety when SHARP devices are used for or in connection with equipment that requires higher reliability such as:
    - Transportation control and safety equipment (i.e., aircraft, trains, automobiles, etc.)
    - Traffic signals
    - Gas leakage sensor breakers
    - Alarm equipment
    - Various safety devices, etc.
  - (iii) SHARP devices shall not be used for or in connection with equipment that requires an extremely high level of reliability and safety such as:
    - Space applications
    - Telecommunication equipment [trunk lines]
    - Nuclear power control equipment
    - Medical and other life support equipment (e.g., scuba).
- Contact a SHARP representative in advance when intending to use SHARP devices for any "specific" applications other than those recommended by SHARP or when it is unclear which category mentioned above controls the intended use.
- If the SHARP devices listed in this publication fall within the scope of strategic products described in the Foreign Exchange and Foreign Trade Control Law of Japan, it is necessary to obtain approval to export such SHARP devices.
- This publication is the proprietary product of SHARP and is copyrighted, with all rights reserved. Under the copyright laws, no part of this publication may be reproduced or transmitted in any form or by any means, electronic or mechanical, for any purpose, in whole or in part, without the express written permission of SHARP. Express written permission is also required before any use of this publication may be made by a third party.
- Contact and consult with a SHARP representative if there are any questions about the contents of this publication.

