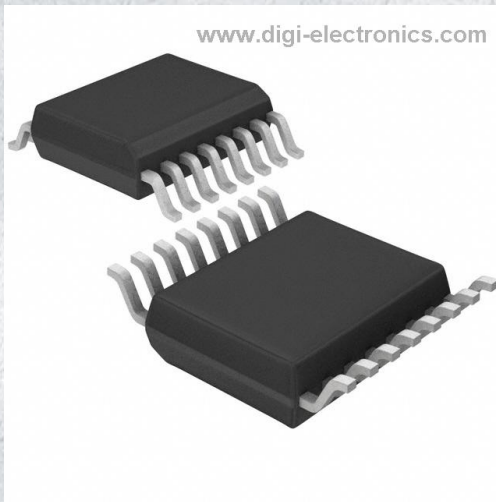


# PC3Q410NIP Datasheet



<https://www.DiGi-Electronics.com>

|                              |  |
|------------------------------|--|
| DiGi Electronics Part Number | PC3Q410NIP-DG  |
| Manufacturer                 | <a href="#">Sharp Microelectronics</a>                         |
| Manufacturer Product Number  | PC3Q410NIP   |
| Description                  | OPTOISO 2.5KV 4CH TRANS 16SOIC                                 |
| Detailed Description         | Optoisolator Transistor Output 2500Vrms 4 Channel 16-Mini-Flat |

This model PC3Q410NIP is available at DiGi Electronics.

DiGi Electronics offers a global database of semiconductor and electronic component datasheets.

We welcome your inquiries regarding pricing, lead time, or other product-related questions.

 [Request a Quote](#)

 [Datasheet Search](#)



Tel: +00 852-30501935

RFQ Email: [Info@DiGi-Electronics.com](mailto:Info@DiGi-Electronics.com)

DiGi is a global authorized distributor of electronic components.

## Purchase and inquiry

Manufacturer Product Number:

PC3Q410NIP

Series:

-

Number of Channels:

4

Current Transfer Ratio (Min):

50% @ 500 $\mu$ A

Turn On / Turn Off Time (Typ):

-

Input Type:

AC, DC

Voltage - Output (Max):

80V

Voltage - Forward (Vf) (Typ):

1.2V

Vce Saturation (Max):

200mV

Mounting Type:

Surface Mount

Supplier Device Package:

16-Mini-Flat

Manufacturer:

Sharp Microelectronics

Product Status:

Obsolete

Voltage - Isolation:

2500Vrms

Current Transfer Ratio (Max):

400% @ 500 $\mu$ A

Rise / Fall Time (Typ):

4 $\mu$ s, 3 $\mu$ s

Output Type:

Transistor

Current - Output / Channel:

50mA

Current - DC Forward (If) (Max):

10 mA

Operating Temperature:

-30°C ~ 100°C

Package / Case:

16-SOIC (0.173", 4.40mm Width)

## Environmental & Export classification

RoHS Status:

RoHS non-compliant

ECCN:

EAR99

Moisture Sensitivity Level (MSL):

1 (Unlimited)

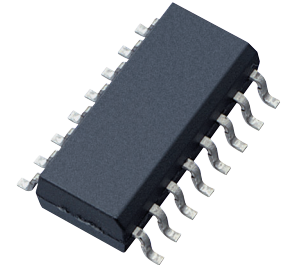
HTSUS:

8541.49.8000

# PC3Q410NIP

\*1-channel package type is also available.  
(model No. **PC3H41xNIP Series**)

## Mini-flat Half Pitch 4-channel Package, High CMR, AC Input, Low Input Current Photocoupler



### ■ Description

**PC3Q410NIP** contains a IRED optically coupled to a phototransistor.

It is packaged in a 4 channel Mini-flat, half pitch type.

Input-output isolation voltage(rms) is 2.5kV.

Collector-emitter Voltage is 80V<sup>(\*)</sup>, CTR is 50% to 400% at input current of  $\pm 0.5\text{mA}$  and CMR is MIN. 10kV/ $\mu\text{s}$ .

### ■ Features

1. 4-channel Mini-flat Half pitch package (Lead pitch : 1.27mm)
2. Double transfer mold package (Ideal for Flow Soldering)
3. AC input type
4. Low input current type ( $I_F = \pm 0.5\text{mA}$ )
5. High collector-emitter voltage ( $V_{CEO} : 80\text{V}^{(*)}$ )
6. High noise immunity due to high common mode rejection voltage (CMR : MIN. 10kV/ $\mu\text{s}$ )
7. Isolation voltage between input and output ( $V_{iso(rms)} : 2.5\text{kV}$ )

(\*) Up to Date code "P9" (September 2002)  $V_{CEO} : 70\text{V}$ .

### ■ Agency approvals/Compliance

1. Recognized by UL1577 (Double protection isolation), file No. E64380 (as model No. **PC3Q41**)
2. Package resin : UL flammability grade (94V-0)

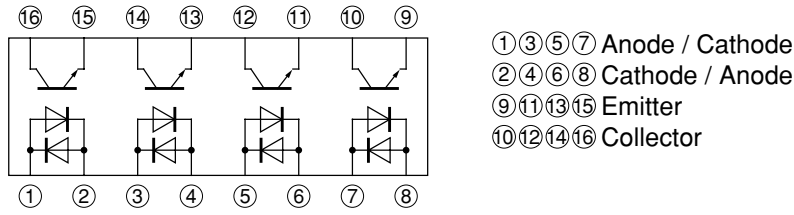
### ■ Applications

1. Programmable controllers
2. Facsimiles
3. Telephones

Notice The content of data sheet is subject to change without prior notice.

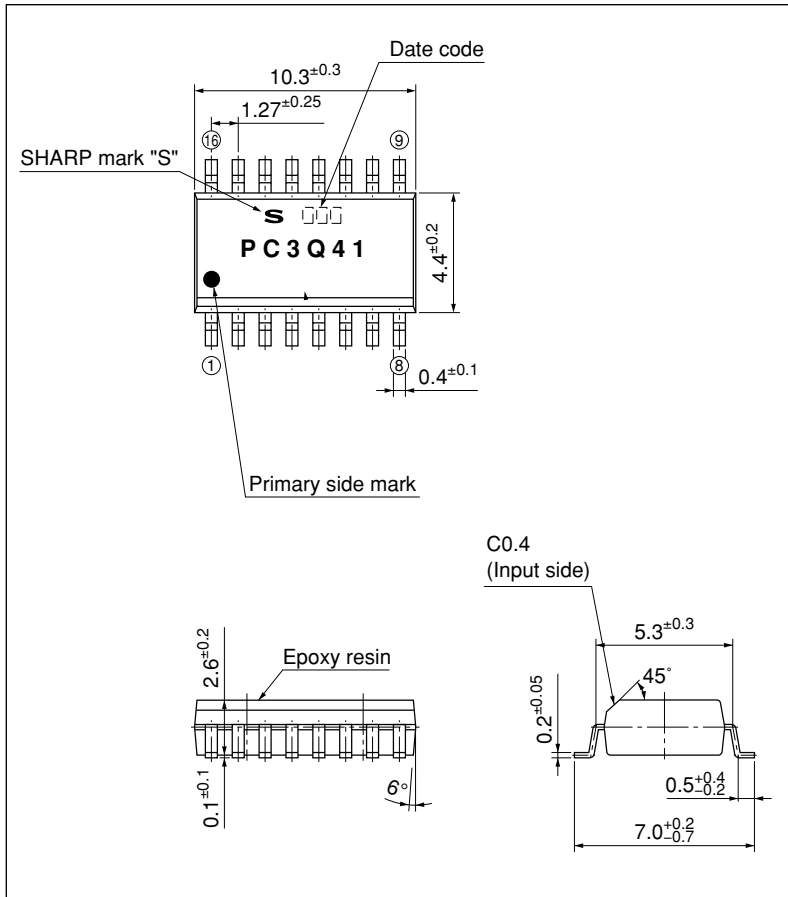
In the absence of confirmation by device specification sheets, SHARP takes no responsibility for any defects that may occur in equipment using any SHARP devices shown in catalogs, data books, etc. Contact SHARP in order to obtain the latest device specification sheets before using any SHARP device.

■ Internal Connection Diagram



■ Outline Dimensions

(Unit : mm)



Product mass : approx. 0.3g

Date code (3 digit)

| 1st digit          |      |      |      | 2nd digit           |      | 3rd digit          |      |
|--------------------|------|------|------|---------------------|------|--------------------|------|
| Year of production |      |      |      | Month of production |      | Week of production |      |
| A.D.               | Mark | A.D. | Mark | Month               | Mark | Week               | Mark |
| 1990               | A    | 2002 | P    | January             | 1    | 1st                | 1    |
| 1991               | B    | 2003 | R    | February            | 2    | 2nd                | 2    |
| 1992               | C    | 2004 | S    | March               | 3    | 3rd                | 3    |
| 1993               | D    | 2005 | T    | April               | 4    | 4th                | 4    |
| 1994               | E    | 2006 | U    | May                 | 5    | 5, 6th             | 5    |
| 1995               | F    | 2007 | V    | June                | 6    |                    |      |
| 1996               | H    | 2008 | W    | July                | 7    |                    |      |
| 1997               | J    | 2009 | X    | August              | 8    |                    |      |
| 1998               | K    | 2010 | A    | September           | 9    |                    |      |
| 1999               | L    | 2011 | B    | October             | O    |                    |      |
| 2000               | M    | 2012 | C    | November            | N    |                    |      |
| 2001               | N    | ∴    | ∴    | December            | D    |                    |      |

repeats in a 20 year cycle

Country of origin  
Japan

**■ Absolute Maximum Ratings** (T<sub>a</sub>=25°C)

|        | Parameter                   | Symbol                 | Rating      | Unit |
|--------|-----------------------------|------------------------|-------------|------|
| Input  | Forward current             | I <sub>F</sub>         | ±10         | mA   |
|        | *1 Peak forward current     | I <sub>FM</sub>        | ±200        | mA   |
|        | Power dissipation           | P                      | 15          | mW   |
| Output | Collector-emitter voltage   | V <sub>CEO</sub>       | *4 80       | V    |
|        | Emitter-collector voltage   | V <sub>ECO</sub>       | 6           | V    |
|        | Collector current           | I <sub>C</sub>         | 50          | mA   |
|        | Collector power dissipation | P <sub>C</sub>         | 150         | mW   |
|        | Total power dissipation     | P <sub>tot</sub>       | 170         | mW   |
|        | Operating temperature       | T <sub>opr</sub>       | -30 to +100 | °C   |
|        | Storage temperature         | T <sub>stg</sub>       | -40 to +125 | °C   |
|        | *2 Isolation voltage        | V <sub>iso (rms)</sub> | 2.5         | kV   |
|        | *3 Soldering temperature    | T <sub>sol</sub>       | 260         | °C   |

\*1 Pulse width ≤ 100µs, Duty ratio : 0.001

\*2 40 to 60%RH, AC for 1 minute, f=60Hz

\*3 For 10s

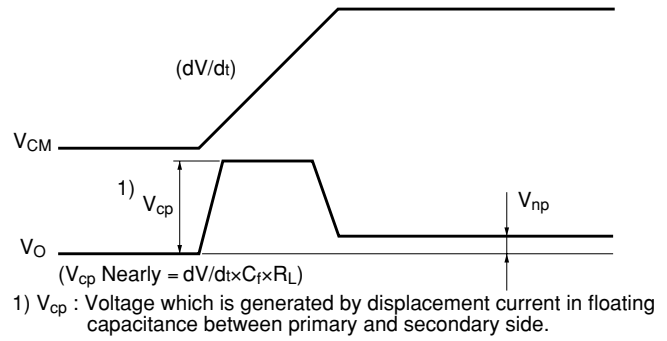
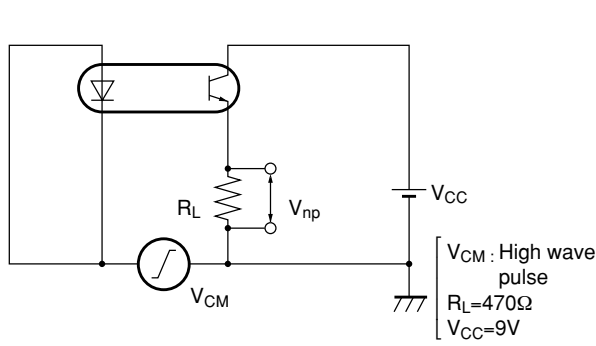
\*4 Up to Date code "P9" (september 2002) V<sub>CEO</sub> : 70V

**■ Electro-optical Characteristics** (T<sub>a</sub>=25°C)

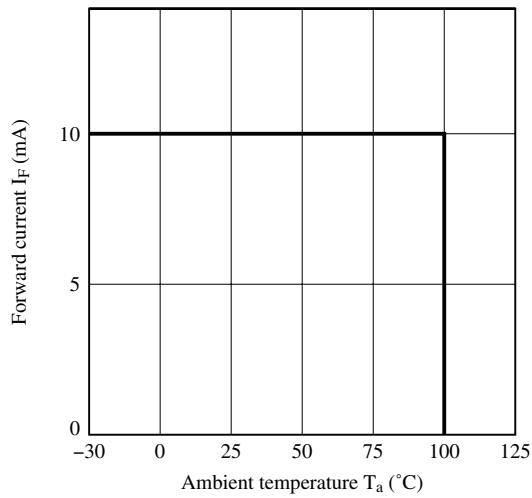
|                          | Parameter                            | Symbol                | Conditions   | MIN.   | TYP.               | MAX. | Unit  |    |
|--------------------------|--------------------------------------|-----------------------|--|--|--------------------|------|-------|----|
| Input                    | Forward voltage                      | V <sub>F</sub>        | I <sub>F</sub> =±5mA   | -  | 1.2                | 1.4  | V     |    |
|                          | Terminal capacitance                 | C <sub>t</sub>        | V=0, f=1kHz  | -  | 30                 | 250  | pF    |    |
| Output                   | Collector dark current               | I <sub>CEO</sub>      | V <sub>CE</sub> =50V, I <sub>F</sub> =0  | -  | -                  | 100  | nA    |    |
|                          | Collector-emitter breakdown voltage  | BV <sub>CEO</sub>     | I <sub>C</sub> =0.1mA, I <sub>F</sub> =0   | *5 80  | -                  | -    | V     |    |
|                          | Emitter-collector breakdown voltage  | BV <sub>ECO</sub>     | I <sub>E</sub> =10µA, I <sub>F</sub> =0  | 6  | -                  | -    | V     |    |
| Transfer characteristics | Collector current                    | I <sub>C</sub>        | I <sub>F</sub> =±0.5mA, V <sub>CE</sub> =5V  | 0.25   | -                  | 2.0  | mA    |    |
|                          | Collector-emitter saturation voltage | V <sub>CE (sat)</sub> | I <sub>F</sub> =±10mA, I <sub>C</sub> =1mA   | -  | -                  | 0.2  | V     |    |
|                          | Isolation resistance                 | R <sub>ISO</sub>      | DC500V, 40 to 60%RH  | 5×10 <sup>10</sup>   | 1×10 <sup>11</sup> | -    | Ω     |    |
|                          | Floating capacitance                 | C <sub>f</sub>        | V=0, f=1MHz  | -  | 0.6                | 1.0  | pF    |    |
|                          | Response time                        | Rise time             | t <sub>r</sub>   | V <sub>CE</sub> =2V, I <sub>C</sub> =2mA, R <sub>L</sub> =100Ω | -                  | 4    | 18    | µs |
|                          |                                      | Fall time             | t <sub>f</sub>   |  | -                  | 3    | 18    | µs |
|                          | Common mode rejection voltage        | CMR                   | T <sub>a</sub> =25°C, R <sub>L</sub> =470Ω, V <sub>CM</sub> =1.5kV(peak), I <sub>F</sub> =0, V <sub>CC</sub> =9V, V <sub>np</sub> =100mV | 10   | -                  | -    | kV/µs |    |

\*5 Up to Date code "P9" (September 2002)BV<sub>CEO</sub>≥70V.

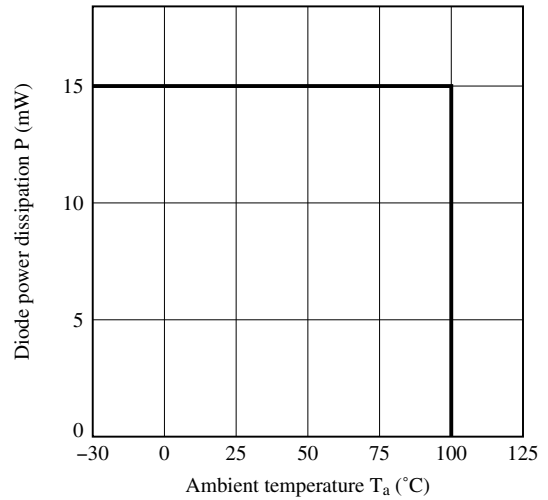
**Fig.1 Test Circuit for Common Mode Rejection Voltage**



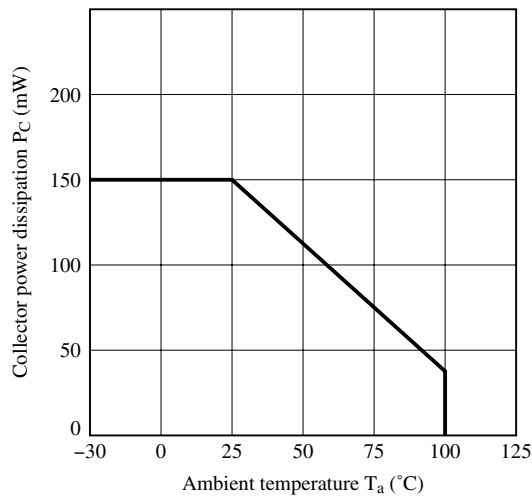
**Fig.2 Forward Current vs. Ambient Temperature**



**Fig.3 Diode Power Dissipation vs. Ambient Temperature**



**Fig.4 Collector Power Dissipation vs. Ambient Temperature**



**Fig.5 Total Power Dissipation vs. Ambient Temperature**

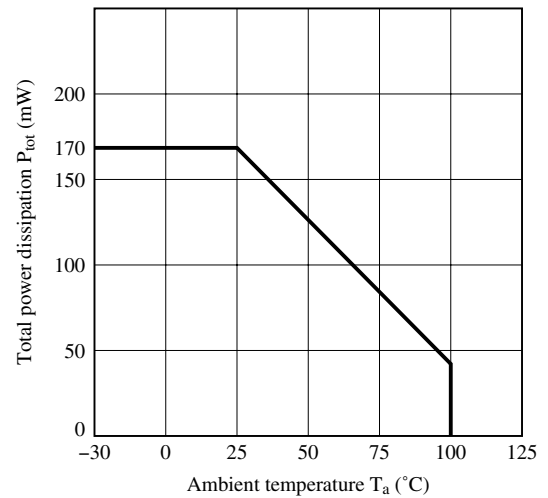


Fig.6 Peak Forward Current vs. Duty Ratio

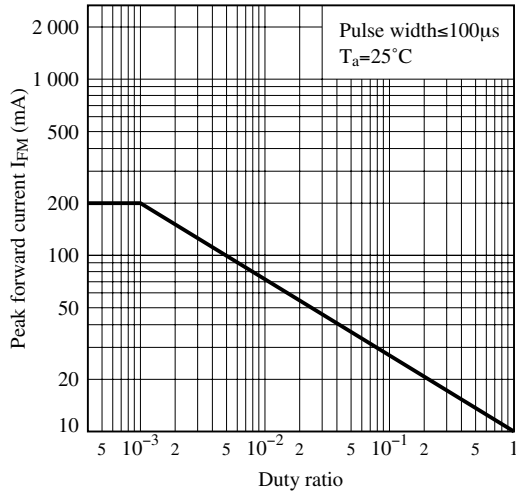


Fig.7 Forward Current vs. Forward Voltage

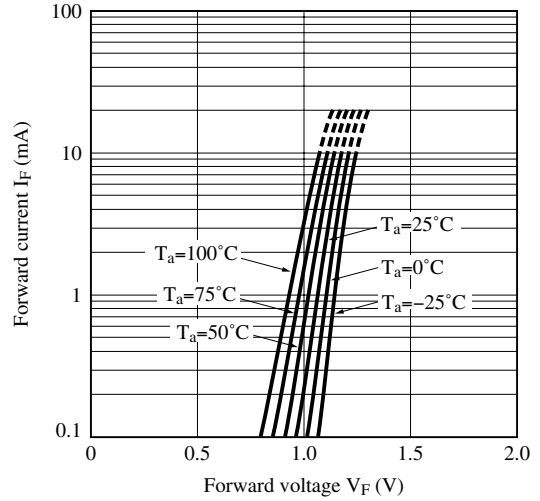


Fig.8 Current Transfer Ratio vs. Forward Current

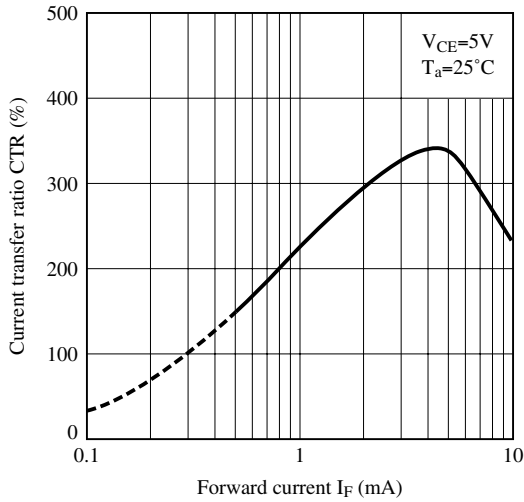


Fig.9 Collector Current vs. Collector-emitter Voltage

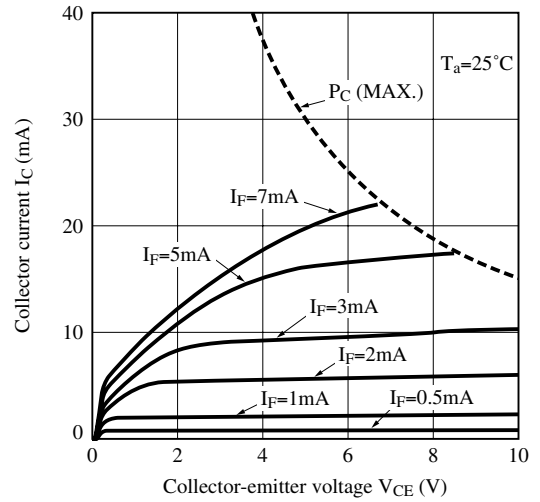


Fig.10 Relative Current Transfer Ratio vs. Ambient Temperature

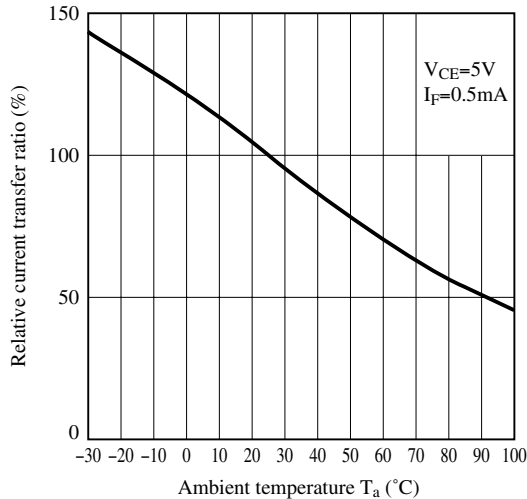
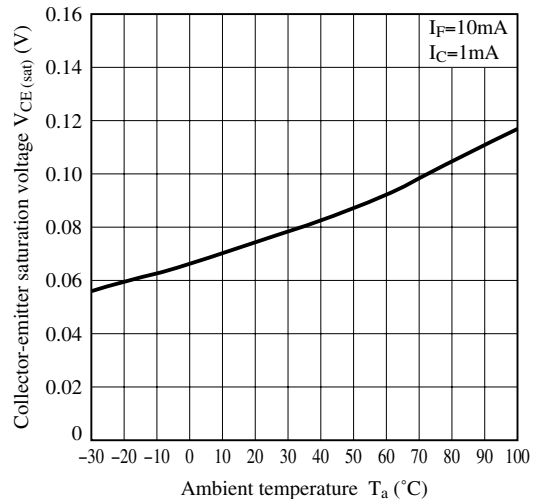
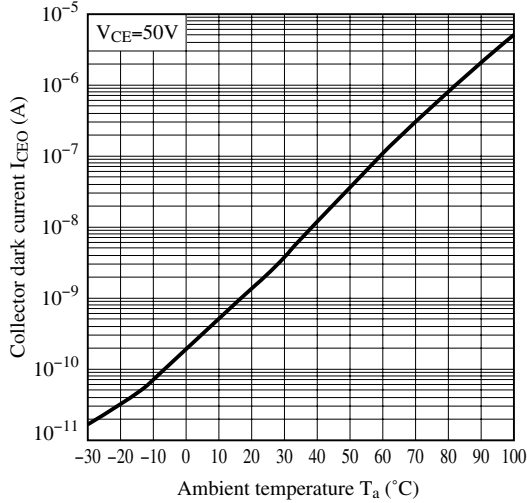


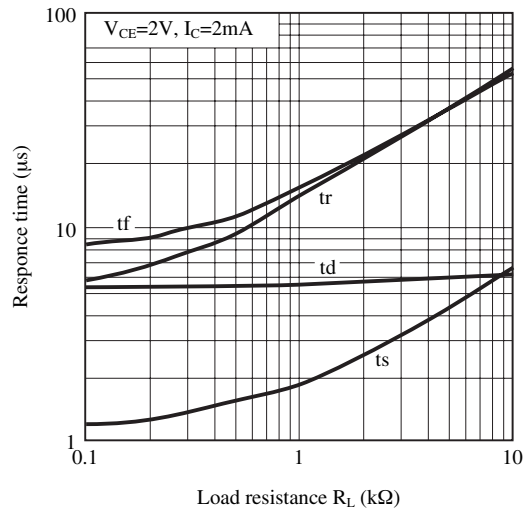
Fig.11 Collector - emitter Saturation Voltage vs. Ambient Temperature



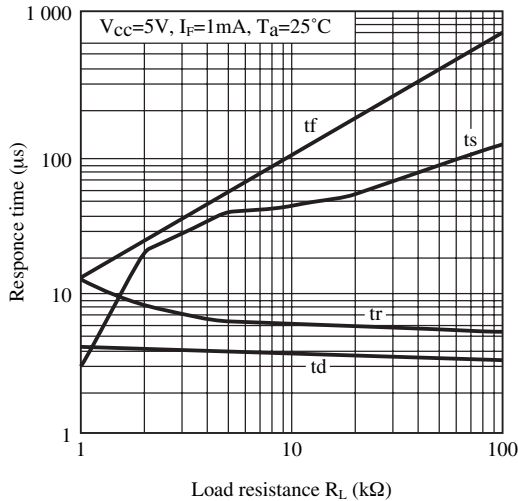
**Fig.12 Collector Dark Current vs. Ambient Temperature**



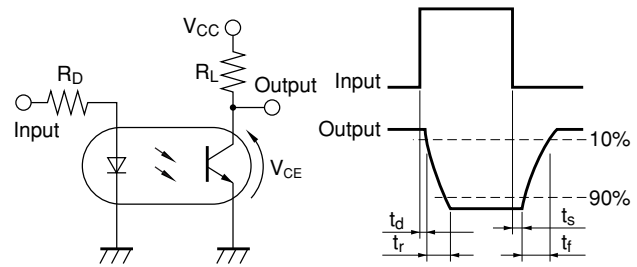
**Fig.13 Response Time vs. Load Resistance (active region)**



**Fig.14 Response Time vs. Load Resistance (saturation region)**

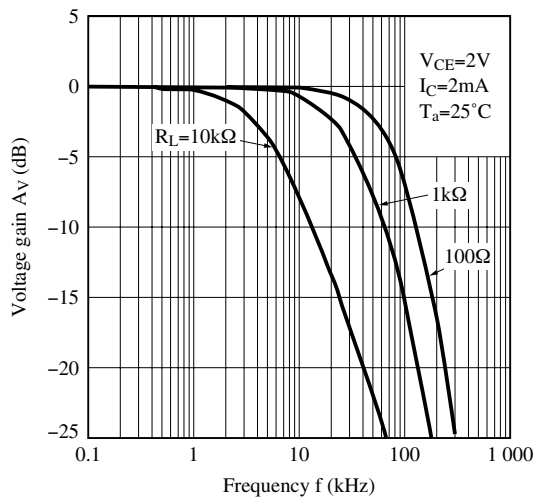


**Fig.15 Test Circuit for Response Time**

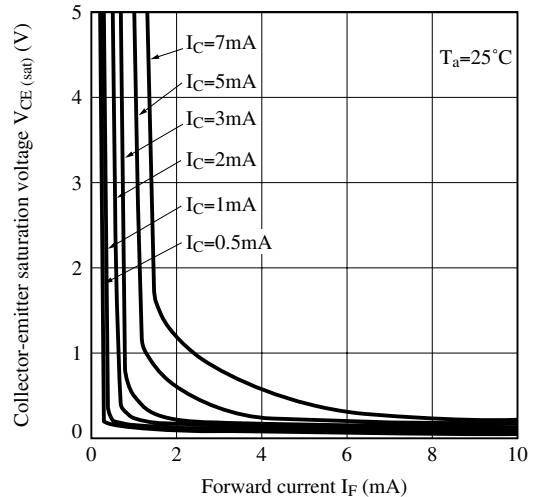


Please refer to the conditions in Fig.13 and Fig.14

**Fig.16 Frequency Response**



**Fig.17 Collector-emitter Saturation Voltage vs. Forward Current**



Remarks : Please be aware that all data in the graph are just for reference and not for guarantee.

■ **Design Considerations**

● **Design guide**

While operating at  $I_F < 0.5\text{mA}$ , CTR variation may increase.  
Please make design considering this fact.

In case that some sudden big noise caused by voltage variation is provided between primary and secondary terminals of photocoupler some current caused by it is floating capacitance may be generated and result in false operation since current may go through IRED or current may change.

If the photocoupler may be used under the circumstances where noise will be generated we recommend to use the bypass capacitors at the both ends of IRED.

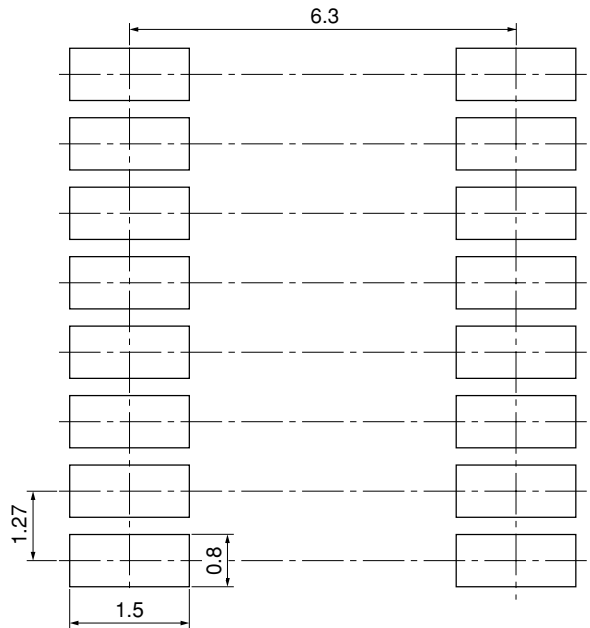
This product is not designed against irradiation and incorporates non-coherent IRED.

● **Degradation**

In general, the emission of the IRED used in photocouplers will degrade over time.

In the case of long term operation, please take the general IRED degradation (50% degradation over 5years) into the design consideration.

● **Recommended Foot Print (reference)**



(Unit : mm)

☆ For additional design assistance, please review our corresponding Optoelectronic Application Notes.

## ■ Manufacturing Guidelines

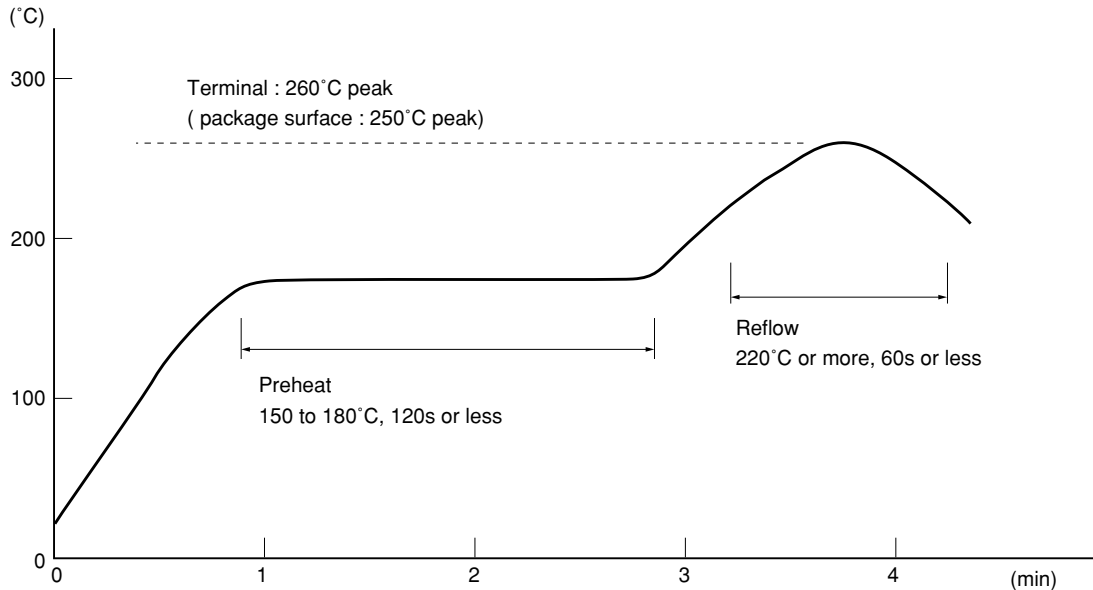
### ● Soldering Method

#### Reflow Soldering:

Reflow soldering should follow the temperature profile shown below.

Soldering should not exceed the curve of temperature profile and time.

Please don't solder more than twice.



#### Flow Soldering :

Due to SHARP's double transfer mold construction submersion in flow solder bath is allowed under the below listed guidelines.

Flow soldering should be completed below 260°C and within 10s.

Preheating is within the bounds of 100 to 150°C and 30 to 80s.

Please don't solder more than twice.

#### Hand soldering

Hand soldering should be completed within 3s when the point of solder iron is below 400°C.

Please don't solder more than twice.

#### Other notices

Please test the soldering method in actual condition and make sure the soldering works fine, since the impact on the junction between the device and PCB varies depending on the tooling and soldering conditions.

**● Cleaning instructions****Solvent cleaning:**

Solvent temperature should be 45°C or below Immersion time should be 3minutes or less

**Ultrasonic cleaning:**

The impact on the device varies depending on the size of the cleaning bath, ultrasonic output, cleaning time, size of PCB and mounting method of the device.

Therefore, please make sure the device withstands the ultrasonic cleaning in actual conditions in advance of mass production.

**Recommended solvent materials:**

Ethyl alcohol, Methyl alcohol and Isopropyl alcohol

In case the other type of solvent materials are intended to be used, please make sure they work fine in actual using conditions since some materials may erode the packaging resin.

**● Presence of ODC**

This product shall not contain the following materials.

And they are not used in the production process for this device.

Regulation substances:CFCs, Halon, Carbon tetrachloride, 1.1.1-Trichloroethane (Methylchloroform)

Specific brominated flame retardants such as the PBBOs and PBBs are not used in this product at all.

■ **Package specification**

● **Tape and Reel package**

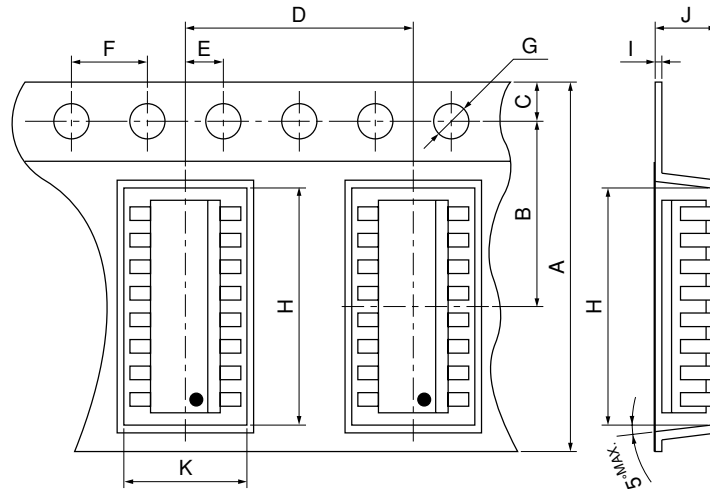
Package materials

Carrier tape : PS

Cover tape : PET (three layer system)

Reel : PS

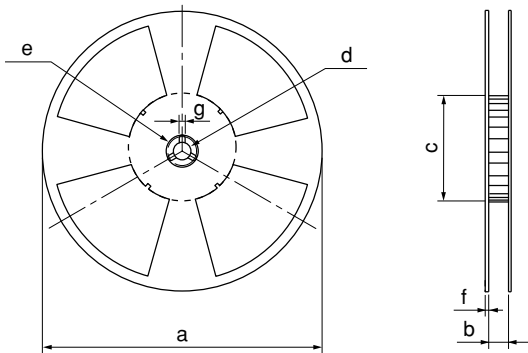
Carrier tape structure and Dimensions



Dimensions List (Unit : mm)

| A                    | B                    | C                    | D                    | E                   | F                   | G                                 |
|----------------------|----------------------|----------------------|----------------------|---------------------|---------------------|-----------------------------------|
| 24.0 <sup>+0.3</sup> | 11.5 <sup>±0.1</sup> | 1.75 <sup>±0.1</sup> | 12.0 <sup>±0.1</sup> | 2.0 <sup>±0.1</sup> | 4.0 <sup>±0.1</sup> | φ1.5 <sup>+0.1</sup> <sub>0</sub> |
| H                    | I                    | J                    | K                    |                     |                     |                                   |
| 10.8 <sup>±0.1</sup> | 0.4 <sup>±0.05</sup> | 3.0 <sup>±0.1</sup>  | 7.4 <sup>±0.1</sup>  |                     |                     |                                   |

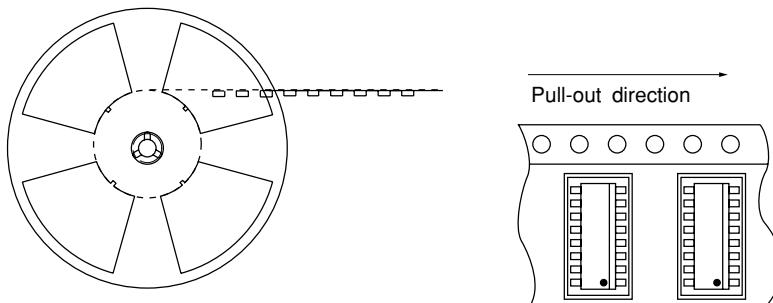
Reel structure and Dimensions



Dimensions List (Unit : mm)

| a                  | b                    | c                   | d                  |
|--------------------|----------------------|---------------------|--------------------|
| 330                | 25.5 <sup>±1.5</sup> | 100 <sup>±1.0</sup> | 13 <sup>±0.5</sup> |
| e                  | f                    | g                   |                    |
| 23 <sup>±1.0</sup> | 2.0 <sup>±0.5</sup>  | 2.0 <sup>±0.5</sup> |                    |

Direction of product insertion



[Packing : 1 000pcs/reel]

## ■ Important Notices

· The circuit application examples in this publication are provided to explain representative applications of SHARP devices and are not intended to guarantee any circuit design or license any intellectual property rights. SHARP takes no responsibility for any problems related to any intellectual property right of a third party resulting from the use of SHARP's devices.

· Contact SHARP in order to obtain the latest device specification sheets before using any SHARP device. SHARP reserves the right to make changes in the specifications, characteristics, data, materials, structure, and other contents described herein at any time without notice in order to improve design or reliability. Manufacturing locations are also subject to change without notice.

· Observe the following points when using any devices in this publication. SHARP takes no responsibility for damage caused by improper use of the devices which does not meet the conditions and absolute maximum ratings to be used specified in the relevant specification sheet nor meet the following conditions:

(i) The devices in this publication are designed for use in general electronic equipment designs such as:

- Personal computers
- Office automation equipment
- Telecommunication equipment [terminal]
- Test and measurement equipment
- Industrial control
- Audio visual equipment
- Consumer electronics

(ii) Measures such as fail-safe function and redundant design should be taken to ensure reliability and safety when SHARP devices are used for or in connection

with equipment that requires higher reliability such as:

- Transportation control and safety equipment (i.e., aircraft, trains, automobiles, etc.)
- Traffic signals
- Gas leakage sensor breakers
- Alarm equipment
- Various safety devices, etc.

(iii) SHARP devices shall not be used for or in connection with equipment that requires an extremely high level of reliability and safety such as:

- Space applications
- Telecommunication equipment [trunk lines]
- Nuclear power control equipment
- Medical and other life support equipment (e.g., scuba).

· If the SHARP devices listed in this publication fall within the scope of strategic products described in the Foreign Exchange and Foreign Trade Law of Japan, it is necessary to obtain approval to export such SHARP devices.

· This publication is the proprietary product of SHARP and is copyrighted, with all rights reserved. Under the copyright laws, no part of this publication may be reproduced or transmitted in any form or by any means, electronic or mechanical, for any purpose, in whole or in part, without the express written permission of SHARP. Express written permission is also required before any use of this publication may be made by a third party.

· Contact and consult with a SHARP representative if there are any questions about the contents of this publication.

## OUR CERTIFICATE

DiGi provide top-quality products and perfect service for customer worldwide through standardization, technological innovation and continuous improvement. DiGi through third-party certification, we stricly control the quality of products and services. Welcome your RFQ to

Email: [Info@DiGi-Electronics.com](mailto:Info@DiGi-Electronics.com)



Tel: +00 852-30501935

RFQ Email: [Info@DiGi-Electronics.com](mailto:Info@DiGi-Electronics.com)

DiGi is a global authorized distributor of electronic components.