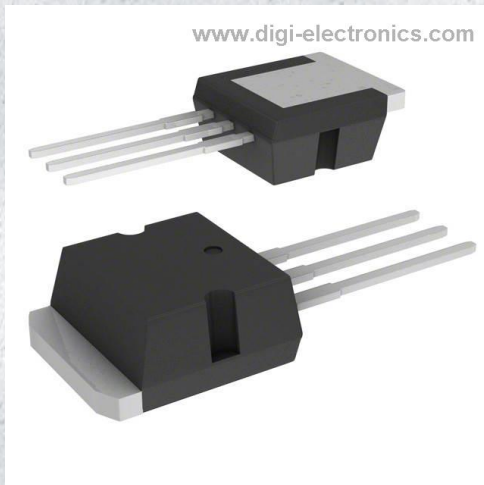


30CTQ060-1 Datasheet



<https://www.DiGi-Electronics.com>

DiGi Electronics Part Number	30CTQ060-1-DG
Manufacturer	SMC Diode Solutions
Manufacturer Product Number	30CTQ060-1
Description	DIODE ARR SCHOTT 60V 15A TO262
Detailed Description	Diode Array 1 Pair Common Cathode 60 V 15A Through Hole TO-262-3 Long Leads, I2PAK, TO-262AA

This model 30CTQ060-1 is available at DiGi Electronics.

DiGi Electronics offers a global database of semiconductor and electronic component datasheets.

We welcome your inquiries regarding pricing, lead time, or other product-related questions.

 [Request a Quote](#)

 [Datasheet Search](#)



Tel: +00 852-30501935

RFQ Email: Info@DiGi-Electronics.com

DiGi is a global authorized distributor of electronic components.

Purchase and inquiry

Manufacturer Product Number:

30CTQ060-1

Series:

-

Diode Configuration:

1 Pair Common Cathode

Voltage - DC Reverse (Vr) (Max):

60 V

Voltage - Forward (Vf) (Max) @ If:

620 mV @ 15 A

Current - Reverse Leakage @ Vr:

1 mA @ 60 V

Mounting Type:

Through Hole

Supplier Device Package:

TO-262

Manufacturer:

SMC Diode Solutions

Product Status:

Active

Technology:

Schottky

Current - Average Rectified (Io) (per Diode):

15A

Speed:

Fast Recovery =< 500ns, > 200mA (Io)

Operating Temperature - Junction:

-55°C ~ 175°C

Package / Case:

TO-262-3 Long Leads, I2PAK, TO-262AA

Base Product Number:

30CTQ

Environmental & Export classification

RoHS Status:

ROHS3 Compliant

REACH Status:

REACH Affected

HTSUS:

8541.10.0080

Moisture Sensitivity Level (MSL):

1 (Unlimited)

ECCN:

EAR99

OUR CERTIFICATE

DiGi provide top-quality products and perfect service for customer worldwide through standardization, technological innovation and continuous improvement. DiGi through third-party certification, we stricly control the quality of products and services. Welcome your RFQ to

Email: Info@DiGi-Electronics.com



Tel: +00 852-30501935

RFQ Email: Info@DiGi-Electronics.com

DiGi is a global authorized distributor of electronic components.