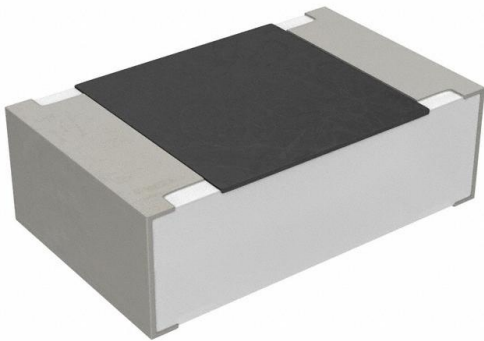


# CSRF0805JT10L0 Datasheet

[www.digi-electronics.com](http://www.digi-electronics.com)



<https://www.DiGi-Electronics.com>

DiGi Electronics Part Number	CSRF0805JT10L0-DG
Manufacturer	<a href="#">Stackpole Electronics Inc</a>
Manufacturer Product Number	CSRF0805JT10L0
Description	RES 0.01 OHM 5% 1/2W 0805
Detailed Description	10 mOhms $\pm$ 5% 0.5W, 1/2W Chip Resistor 0805 (2012 Metric) Automotive AEC-Q200, Current Sense, Moisture Resistant Metal Foil

This model CSRF0805JT10L0 is available at DiGi Electronics.

DiGi Electronics offers a global database of semiconductor and electronic component datasheets.

We welcome your inquiries regarding pricing, lead time, or other product-related questions.

 [Request a Quote](#)

 [Datasheet Search](#)



Tel: +00 852-30501935

RFQ Email: [Info@DiGi-Electronics.com](mailto:Info@DiGi-Electronics.com)

DiGi is a global authorized distributor of electronic components.

## Purchase and inquiry

Manufacturer Product Number:

CSRF0805JT10L0

Series:

CSRF

Resistance:

10 MOhms

Power (Watts):

0.5W, 1/2W

Features:

Automotive AEC-Q200, Current Sense, Moisture Resistant

Operating Temperature:

-55°C ~ 170°C

Supplier Device Package:

0805

Size / Dimension:

0.083" L x 0.051" W (2.10mm x 1.30mm)

Number of Terminations:

2

Manufacturer:

Stackpole Electronics Inc

Product Status:

Active

Tolerance:

±5%

Composition:

Metal Foil

Temperature Coefficient:

±100ppm/°C

Package / Case:

0805 (2012 Metric)

Ratings:

AEC-Q200

Height - Seated (Max):

0.033" (0.85mm)

Failure Rate:

-

## Environmental & Export classification

RoHS Status:

ROHS3 Compliant

REACH Status:

REACH Unaffected

HTSUS:

8533.21.0030

Moisture Sensitivity Level (MSL):

1 (Unlimited)

ECCN:

EAR99

# CSRF Series

## Foil on Ceramic Current Sensing Chip Resistor

**Features:**

- High power rating
- Wide resistance range
- Other resistance values may be available
- RoHS compliant, REACH compliant, lead free, and halogen free
- All sizes, except 0612, 0805-HP and 2010, are AEC-Q200 compliant



Electrical Specifications - CSRF				
Type/Code	Power Rating (W)	TCR (ppm/°C)	Ohmic Range (Ω) and Tolerance	
			1%	5%
CSRF0402	0.125	±300	0.003 - 0.007	
		±200	0.008 - 0.02	
CSRF0402-HP	0.25	±400	0.0025	
		±300	0.003 - 0.004	
		±200	0.005 - 0.007	
		±100	0.008 - 0.02	
CSRF0603	0.25	±100	0.002 - 0.004	
		±150	0.005 - 0.009	
		±75	0.01 - 0.03	
CSRF0603-HP	0.5	±100	0.002 - 0.009	
		±75	0.01 - 0.03	
CSRF0805	0.5	±100	0.003 - 0.01	
		±50	0.011 - 0.03	
CSRF0805-HP	1	±100	0.005 - 0.01	
		±50	0.011 - 0.03	
CSRF0508	1	±100	0.005 - 0.009	
		±50	0.01 - 0.062	
CSRF1206	1	±100	0.003 - 0.01	
		±50	0.011 - 0.05	
CSRF0612	1.5	±100	0.002 - 0.004	
		±75	0.005 - 0.03	
CSRF2010 <sup>(1)</sup>	1	±200	0.002	
		±100	0.003 - 0.009	
		±50	0.01 - 0.1	
CSRF2512	2	±100	0.002 - 0.009	
		±50	0.01 - 0.56	
CSRF1225	3	±100	0.001 - 0.009	-
		±50	0.01 - 0.1	-

(1) For 2010 size, MOQ of 20 K pieces per value is required.

Please refer to the High-Power Resistor Application Note for more information on designing and implementing high power resistor types.

**CSRF Series**  
Foil on Ceramic Current Sensing Chip Resistor

**Mechanical Specifications**



Type/Code	L Body Length	W Body Width	H Body Height	T Bottom Termination	Unit
CSRF0402 0.003Ω - 0.007Ω	0.039 ± 0.004 1.00 ± 0.10	0.022 ± 0.004 0.55 ± 0.10	0.018 ± 0.004 0.45 ± 0.10	0.014 ± 0.004 0.35 ± 0.10	inches mm
CSRF0402 0.008Ω - 0.02Ω	0.039 ± 0.004 1.00 ± 0.10	0.022 ± 0.004 0.55 ± 0.10	0.018 ± 0.004 0.45 ± 0.10	0.010 ± 0.004 0.25 ± 0.10	inches mm
CSRF0402-HP 0.0025Ω	0.039 ± 0.004 1.00 ± 0.10	0.022 ± 0.004 0.55 ± 0.10	0.018 ± 0.004 0.45 ± 0.10	0.018 ± 0.004 0.45 ± 0.10	inches mm
CSRF0402-HP 0.003Ω - 0.004Ω	0.039 ± 0.004 1.00 ± 0.10	0.022 ± 0.004 0.55 ± 0.10	0.018 ± 0.004 0.45 ± 0.10	0.018 ± 0.004 0.45 ± 0.10	inches mm
CSRF0402-HP 0.005Ω - 0.007Ω	0.039 ± 0.004 1.00 ± 0.10	0.022 ± 0.004 0.55 ± 0.10	0.018 ± 0.004 0.45 ± 0.10	0.014 ± 0.004 0.35 ± 0.10	inches mm
CSRF0402-HP 0.008Ω - 0.02Ω	0.039 ± 0.004 1.00 ± 0.10	0.022 ± 0.004 0.55 ± 0.10	0.018 ± 0.004 0.45 ± 0.10	0.010 ± 0.004 0.25 ± 0.10	inches mm
CSRF0603 (standard and -HP) 0.002Ω - 0.004Ω	0.063 ± 0.004 1.60 ± 0.10	0.031 ± 0.004 0.80 ± 0.10	0.022 ± 0.006 0.55 ± 0.15	0.022 ± 0.008 0.55 ± 0.20	inches mm
CSRF0603 (standard and -HP) 0.005Ω - 0.03Ω	0.063 ± 0.004 1.60 ± 0.10	0.031 ± 0.004 0.80 ± 0.10	0.022 ± 0.006 0.55 ± 0.15	0.012 ± 0.008 0.30 ± 0.20	inches mm
CSRF0805 CSRF0805-HP	0.083 ± 0.008 2.10 ± 0.20	0.051 ± 0.006 1.30 ± 0.15	0.028 ± 0.006 0.70 ± 0.15	0.018 ± 0.008 0.45 ± 0.20	inches mm
CSRF1206	0.122 ± 0.008 3.10 ± 0.20	0.061 ± 0.008 1.55 ± 0.20	0.031 ± 0.006 0.80 ± 0.15	0.022 ± 0.008 0.55 ± 0.20	inches mm
CSRF2010 0.002Ω	0.197 ± 0.008 5.00 ± 0.20	0.098 ± 0.008 2.50 ± 0.20	0.030 ± 0.008 0.75 ± 0.20	0.071 ± 0.012 1.80 ± 0.30	inches mm
CSRF2010 0.003Ω	0.197 ± 0.008 5.00 ± 0.20	0.098 ± 0.008 2.50 ± 0.20	0.030 ± 0.008 0.75 ± 0.20	0.063 ± 0.012 1.60 ± 0.30	inches mm
CSRF2010 0.004Ω - 0.005Ω	0.197 ± 0.008 5.00 ± 0.20	0.098 ± 0.008 2.50 ± 0.20	0.030 ± 0.008 0.75 ± 0.20	0.051 ± 0.012 1.30 ± 0.30	inches mm
CSRF2010 > 0.005Ω	0.197 ± 0.008 5.00 ± 0.20	0.098 ± 0.008 2.50 ± 0.20	0.030 ± 0.008 0.75 ± 0.20	0.031 ± 0.012 0.80 ± 0.30	inches mm
CSRF2512	0.252 ± 0.012 6.40 ± 0.30	0.126 ± 0.012 3.20 ± 0.30	0.030 ± 0.012 0.75 ± 0.30	0.055 ± 0.022 1.40 ± 0.55	inches mm

**Mechanical Specifications**



Type/Code	L Body Length	W Body Width	H Body Height	T Bottom Termination	Unit
CSRF0508	0.047 ± 0.010 1.20 ± 0.25	0.079 ± 0.010 2.00 ± 0.25	0.026 ± 0.008 0.65 ± 0.20	0.017 ± 0.008 0.43 ± 0.20	inches mm
CSRF0612	0.063 ± 0.008 1.60 ± 0.20	0.126 ± 0.008 3.20 ± 0.20	0.024 ± 0.008 0.60 ± 0.20	0.012 ± 0.008 0.30 ± 0.20	inches mm
CSRF1225	0.126 ± 0.012 3.20 ± 0.30	0.252 ± 0.012 6.40 ± 0.30	0.026 ± 0.008 0.65 ± 0.20	0.024 ± 0.008 0.60 ± 0.20	inches mm

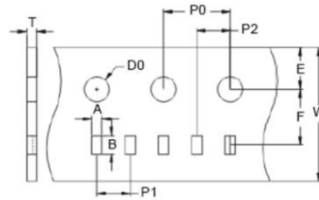
Performance Characteristics				
Test	Test Method	Test Specification	Typical	Test Condition
Load Life	MIL-STD-202F-Method 108A	±1% 1225: ±2% + 0.5 mΩ	≤ 0.5%	RCWV at 70°C; 1.5 hours "ON"; 0.5 hour "OFF" Total 1000 ±24 hours
Resistance to Soldering Heat	MIL-STD-202F-Method 210E	±1%	≤ 0.3%	260 ± 5°C for 10 ± 1 seconds
Solderability	MIL-STD-202F-Method 208H	minimum 95% coverage	> 95%	245 ± 5°C for 2 ± 0.5 seconds
Thermal Shock	MIL-STD-202F-Method 107G	±1%	≤ 0.3%	-55 to +150°C, 100 cycles
Short Time Overload <sup>(*)</sup>	JIS-C-5202-5.5	±1% + 0.5 mΩ	≤ 0.3%	Sizes 0805-HP, 0508,1225, and 2512: 2.5 X rated power for 5 seconds All other sizes: 5 X rated power for 5 seconds
High Temperature Exposure	JIS-C-5201-1, Clause 4.23.2 IEC60068-2-2	±1% 1225: ±1% + 0.5 mΩ	≤ 0.2%	125°C, 1000 hours 1225: 155°C, 1000 hours
Moisture Resistance	MIL-STD-202F-Method 106G	±1%	≤ 0.5%	
Insulation Resistance	MIL-STD-202F-Method 302	1 MΩ minimum	≥ 1 MΩ	Apply 100 VDC for 1 minute

(\*) Sufficient copper size and weight required to maintain component temperature below 100°C  
 Recommended storage temperature: 5 ~ 35°C. humidity: 40 ~ 75%  
 Operating temperature range: 1225 and 2512 = -55 to +155°C; all other sizes = -55 to +170°C

**Power Derating Curve:**



**Taping Specifications - Paper Tape**



Type/Code	A	B	E	F	W	Unit
CSRF0402	0.028 ± 0.002	0.047 ± 0.002	0.069 ± 0.004	0.138 ± 0.002	0.315 ± 0.008	Inches
	0.70 ± 0.05	1.20 ± 0.05	1.75 ± 0.10	3.50 ± 0.05	8.00 ± 0.20	mm
CSRF0603	0.043 ± 0.004	0.075 ± 0.004	0.069 ± 0.004	0.138 ± 0.002	0.315 ± 0.008	Inches
	1.10 ± 0.10	1.90 ± 0.10	1.75 ± 0.10	3.50 ± 0.05	8.00 ± 0.20	mm
CSRF0805	0.063 ± 0.004	0.094 ± 0.004	0.069 ± 0.004	0.138 ± 0.002	0.315 ± 0.008	Inches
	1.60 ± 0.10	2.40 ± 0.10	1.75 ± 0.10	3.50 ± 0.05	8.00 ± 0.20	mm
CSRF0508	0.066 ± 0.008	0.094 ± 0.008	0.069 ± 0.004	0.138 ± 0.004	0.315 ± 0.012	Inches
	1.68 ± 0.20	2.38 ± 0.20	1.75 ± 0.10	3.50 ± 0.10	8.00 ± 0.30	mm
CSRF1206	0.079 ± 0.004	0.142 ± 0.004	0.069 ± 0.004	0.138 ± 0.002	0.315 ± 0.008	Inches
	2.00 ± 0.10	3.60 ± 0.10	1.75 ± 0.10	3.50 ± 0.05	8.00 ± 0.20	mm
CSRF0612	0.079 ± 0.004	0.142 ± 0.004	0.069 ± 0.004	0.138 ± 0.002	0.315 ± 0.008	Inches
	2.00 ± 0.10	3.60 ± 0.10	1.75 ± 0.10	3.50 ± 0.05	8.00 ± 0.20	mm

**CSRF Series**  
Foil on Ceramic Current Sensing Chip Resistor

**Taping Specifications - Paper Tape (cont.)**

Type/Code	P0	P1	P2	D0	T	Unit
CSRF0402	0.157 ± 0.004 4.00 ± 0.10	0.079 ± 0.004 2.00 ± 0.10	0.079 ± 0.002 2.00 ± 0.05	0.061 ± 0.002 1.55 ± 0.05	0.024 ± 0.004 0.60 ± 0.10	Inches mm
CSRF0603	0.157 ± 0.004 4.00 ± 0.10	0.157 ± 0.004 4.00 ± 0.10	0.079 ± 0.002 2.00 ± 0.05	0.061 ± 0.002 1.55 ± 0.05	0.028 ± 0.004 0.70 ± 0.10	Inches mm
CSRF0805	0.157 ± 0.004 4.00 ± 0.10	0.157 ± 0.004 4.00 ± 0.10	0.079 ± 0.002 2.00 ± 0.05	0.061 ± 0.002 1.55 ± 0.05	0.038 ± 0.004 0.97 ± 0.10	Inches mm
CSRF0508	0.157 ± 0.004 4.00 ± 0.10	0.157 ± 0.004 4.00 ± 0.10	0.079 ± 0.004 2.00 ± 0.10	0.059 ± 0.004 1.50 ± 0.10	0.034 ± 0.008 0.87 ± 0.20	Inches mm
CSRF1206	0.157 ± 0.004 4.00 ± 0.10	0.157 ± 0.004 4.00 ± 0.10	0.079 ± 0.002 2.00 ± 0.05	0.061 ± 0.002 1.55 ± 0.05	0.038 ± 0.004 0.97 ± 0.10	Inches mm
CSRF0612	0.157 ± 0.004 4.00 ± 0.10	0.157 ± 0.004 4.00 ± 0.10	0.079 ± 0.002 2.00 ± 0.05	0.061 ± 0.002 1.55 ± 0.05	0.038 ± 0.004 0.97 ± 0.10	Inches mm

**Taping Specifications – Plastic Tape**



Type/Code	A	B	E	F	W	Unit
CSRF2010	0.110 ± 0.006 2.80 ± 0.15	0.217 ± 0.006 5.50 ± 0.15	0.069 ± 0.004 1.75 ± 0.10	0.217 ± 0.002 5.50 ± 0.05	0.472 ± 0.012 12.00 ± 0.30	Inches mm
CSRF2512	0.134 ± 0.008 3.40 ± 0.20	0.266 ± 0.008 6.75 ± 0.20	0.069 ± 0.004 1.75 ± 0.10	0.217 ± 0.004 5.50 ± 0.10	0.472 ± 0.012 12.00 ± 0.30	Inches mm

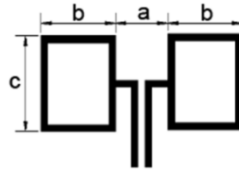
Type/Code	P0	P1	P2	D0	T	Unit
CSRF2010	0.157 ± 0.004 4.00 ± 0.10	0.157 ± 0.004 4.00 ± 0.10	0.079 ± 0.002 2.00 ± 0.05	0.059 ± 0.004 1.50 ± 0.10	0.033 ± 0.008 0.84 ± 0.20	Inches mm
CSRF2512	0.157 ± 0.004 4.00 ± 0.10	0.157 ± 0.004 4.00 ± 0.10	0.079 ± 0.004 2.00 ± 0.10	0.059 ± 0.004 1.50 ± 0.10	0.039 ± 0.008 1.00 ± 0.20	Inches mm

**Taping Specifications – Plastic Tape**



Type/Code	W	P	E	F	D	G	Unit
CSRF1225	0.472 ± 0.012 12.00 ± 0.30	0.016 ± 0.004 0.40 ± 0.10	0.069 ± 0.004 1.75 ± 0.10	0.217 ± 0.004 5.50 ± 0.10	0.059 +0.004/-0 1.50 +0.1/-0	0.157 ± 0.004 4.00 ± 0.10	Inches mm
	0.079 ± 0.004 2.00 ± 0.10	0.134 ± 0.008 3.40 ± 0.20	0.266 ± 0.008 6.75 ± 0.20	0.039 ± 0.008 1.00 ± 0.20	0.010 ± 0.004 0.25 ± 0.10	Inches mm	

**Recommended Pad Layouts**



Size	Ohmic Range ( $\Omega$ )	a	b	c	Unit
CSRF0402	0.003 - 0.007	0.012 0.30	0.024 0.60	0.024 0.60	inches mm
	0.008 - 0.02	0.020 0.50	0.020 0.50	0.024 0.60	inches mm
CSRF0402-HP	All	0.008 0.20	0.031 0.80	0.024 0.60	inches mm
CSRF0603	0.002 - 0.004	0.014 0.35	0.043 1.10	0.039 1.00	inches mm
	0.005 - 0.009	0.024 0.60	0.035 0.90	0.039 1.00	inches mm
	0.01 - 0.03	0.035 0.90	0.028 0.70	0.039 1.00	inches mm
CSRF0603-HP	0.005 - 0.009	0.024 0.60	0.035 0.90	0.039 1.00	inches mm
CSRF0603-HP	0.01 - 0.03	0.035 0.90	0.028 0.70	0.039 1.00	inches mm
CSRF0805	All	0.047 1.20	0.047 1.20	0.055 1.40	inches mm
CSRF0805-HP	All	0.047 1.20	0.047 1.20	0.055 1.40	inches mm
CSRF0508	All	0.024 0.60	0.043 1.10	0.091 2.30	inches mm
CSRF1206	All	0.087 2.20	0.051 1.30	0.071 1.80	inches mm
CSRF0612	All	0.024 0.60	0.051 1.30	0.142 3.60	inches mm
CSRF2010	0.002	0.039 1.00	0.104 2.65	0.114 2.90	inches mm
	0.003 - 0.009	0.063 1.60	0.093 2.35	0.114 2.90	inches mm
	0.01 - 0.1	0.106 2.70	0.071 1.80	0.114 2.90	inches mm
CSRF2512	0.002 - 0.003	0.063 1.60	0.152 3.85	0.141 3.57	inches mm
CSRF2512	0.004 - 0.56	0.122 3.10	0.122 3.10	0.141 3.57	inches mm
CSRF1225	0.001 - 0.1	0.093 2.35	0.285 7.25	0.055 1.40	inches mm

**Soldering Recommendations:**

- Peak reflow temperatures and durations:
  - IR Reflow Peak = 260°C max for 10 seconds
  - Wave Solder = 260°C max for 10 seconds
- Compatible with lead and lead-free solder reflow process
- Recommended IR Reflow Profile:



**High Power Chip Resistors and Thermal Management**

Stackpole has developed several surface mount resistor series in addition to our current sense resistors, which have had higher power ratings than standard resistor chips. This has caused some uncertainty and even confusion by users as to how to reliably use these resistors at the higher power ratings in their designs.

The data sheets for the RHC, RMCP, RNCP, CSR, CSRN, CSRF, CSS, and CSSH state that the rated power assumes an ambient temperature of no more than 100°C for the CSS / CSSH series and 70°C for all other high power resistor series. In addition, IPC and UL best practices dictate that the combined temperature on any resistor due to power dissipated and ambient air shall be no more than 105°C. At first glance this wouldn't seem too difficult, however the graph below shows typical heat rise for the CSR1206 100 milliohm at full rated power. The heat rise for the RMCP and RNCP would be similar. The RHC with its unique materials, design, and processes would have less heat rise and therefore would be easier to implement for any given customer.

CSR1206 100 mΩ Surface Temperature Rise



The 102°C heat rise shown here would indicate there will be additional thermal reduction techniques needed to keep this part under 105°C total hot spot temperature if this part is to be used at 0.75 watts of power. However, this same part at the usual power rating for this size would have a heat rise of around 72°C. This additional heat rise may be dealt with using wider conductor traces, larger solder pads and land patterns under the solder mask, heavier copper in the conductors, vias through PCB, air movement, and heat sinks, among many other techniques. Because of the variety of methods customers can use to lower the effective heat rise of the circuit, resistor manufacturers simply specify power ratings with the limitations on ambient air temperature and total hot spot temperatures and leave the details of how to best accomplish this to the design engineers. Design guidelines for products in various market segments can vary widely so it would be unnecessarily constraining for a resistor manufacturer to recommend the use of any of these methods over another.

Note: The final resistance value can be affected by the board layout and assembly process, especially the size of the mounting pads and the amount of solder used. This is especially notable for resistance values ≤ 50mΩ. This should be taken into account when designing.

# CSRF Series

## Foil on Ceramic Current Sensing Chip Resistor

### RoHS Compliance

Stackpole Electronics has joined the worldwide effort to reduce the amount of lead in electronic components and to meet the various regulatory requirements now prevalent, such as the European Union's directive regarding "Restrictions on Hazardous Substances" (RoHS 3). As part of this ongoing program, we periodically update this document with the status regarding the availability of our compliant components. All our standard part numbers are compliant to EU Directive 2011/65/EU of the European Parliament as amended by Directive (EU) 2015/863/EU as regards the list of restricted substances.

RoHS Compliance Status						
Standard Product Series	Description	Package / Termination Type	Standard Series RoHS Compliant	Lead-Free Termination Composition	Lead-Free Mfg. Effective Date (Std Product Series)	Lead-Free Effective Date Code (YY/WW)
CSRF	Foil on Ceramic Current Sensing Surface Mount Chip Resistor	SMD	YES	100% Matte Sn over Ni	Jul-04	04/27

### "Conflict Metals" Commitment

We at Stackpole Electronics, Inc. are joined with our industry in opposing the use of metals mined in the "conflict region" of the eastern Democratic Republic of the Congo (DRC) in our products. Recognizing that the supply chain for metals used in the electronics industry is very complex, we work closely with our own suppliers to verify to the extent possible that the materials and products we supply do not contain metals sourced from this conflict region. As such, we are in compliance with the requirements of Dodd-Frank Act regarding Conflict Minerals.

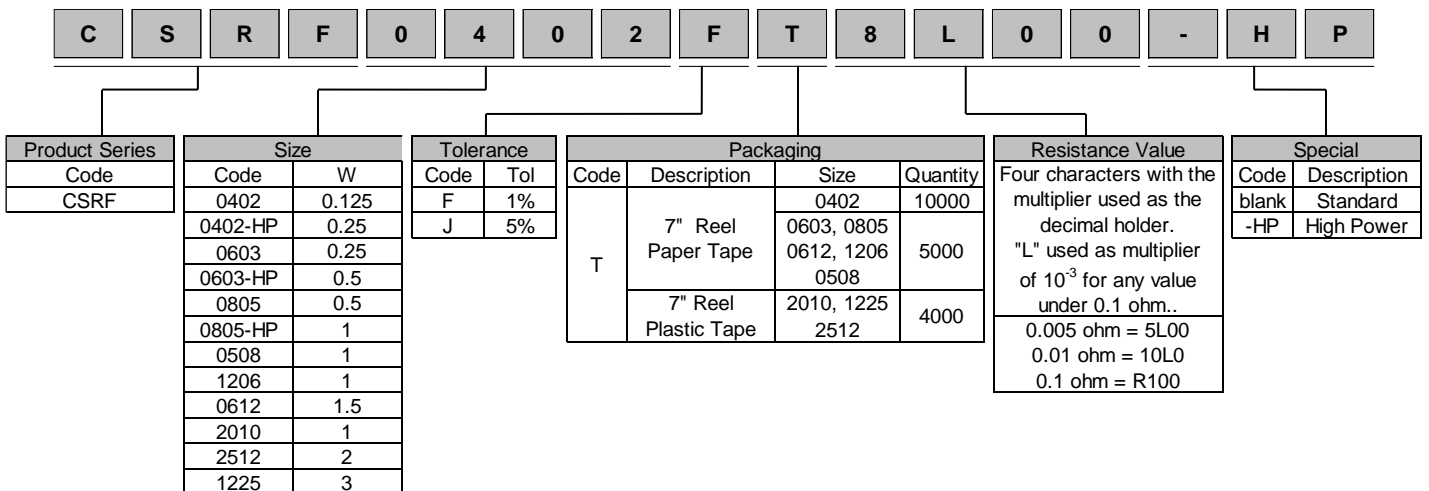
### Compliance to "REACH"

We certify that all passive components supplied by Stackpole Electronics, Inc. are SVHC (Substances of Very High Concern) free and compliant with the requirements of EU Directive 1907/2006/EC, "The Registration, Evaluation, Authorization and Restriction of Chemicals", otherwise referred to as REACH. Contact us for complete list of REACH Substance Candidate List.

### Environmental Policy

It is the policy of Stackpole Electronics, Inc. (SEI) to protect the environment in all localities in which we operate. We continually strive to improve our effect on the environment. We observe all applicable laws and regulations regarding the protection of our environment and all requests related to the environment to which we have agreed. We are committed to the prevention of all forms of pollution.

## How to Order



## OUR CERTIFICATE

DiGi provide top-quality products and perfect service for customer worldwide through standardization, technological innovation and continuous improvement. DiGi through third-party certification, we stricly control the quality of products and services. Welcome your RFQ to

Email: [Info@DiGi-Electronics.com](mailto:Info@DiGi-Electronics.com)



Tel: +00 852-30501935

RFQ Email: [Info@DiGi-Electronics.com](mailto:Info@DiGi-Electronics.com)

DiGi is a global authorized distributor of electronic components.