

# RSMF2JB6K20 Datasheet



<https://www.DiGi-Electronics.com>

DiGi Electronics Part Number	RSMF2JB6K20-DG
Manufacturer	<a href="#">Stackpole Electronics Inc</a>
Manufacturer Product Number	RSMF2JB6K20
Description	RES 6.2K OHM 5% 2W AXIAL
Detailed Description	6.2 kOhms ±5% 2W Through Hole Resistor Axial Flame Proof, Safety Metal Oxide Film

This model RSMF2JB6K20 is available at DiGi Electronics.

DiGi Electronics offers a global database of semiconductor and electronic component datasheets.

We welcome your inquiries regarding pricing, lead time, or other product-related questions.

 [Request a Quote](#)

 [Datasheet Search](#)



Tel: +00 852-30501935

RFQ Email: [Info@DiGi-Electronics.com](mailto:Info@DiGi-Electronics.com)

DiGi is a global authorized distributor of electronic components.

## Purchase and inquiry

Manufacturer Product Number:

RSMF2JB6K20

Series:

RSMF

Resistance:

6.2 kOhms

Power (Watts):

2W

Features:

Flame Proof, Safety

Operating Temperature:

-55°C ~ 235°C

Supplier Device Package:

Axial

Height - Seated (Max):

-

Failure Rate:

-

Manufacturer:

Stackpole Electronics Inc

Product Status:

Active

Tolerance:

±5%

Composition:

Metal Oxide Film

Temperature Coefficient:

±200ppm/°C

Package / Case:

Axial

Size / Dimension:

0.177" Dia x 0.433" L (4.50mm x 11.00mm)

Number of Terminations:

2

## Environmental & Export classification

RoHS Status:

ROHS3 Compliant

REACH Status:

REACH Unaffected

HTSUS:

8533.21.0090

Moisture Sensitivity Level (MSL):

Not Applicable

ECCN:

EAR99

# RSF / RSMF Series

## General Purpose Metal Oxide Resistor

Stackpole Electronics, Inc.  
Resistive Product Solutions

### Features:

- Lower-cost alternative to carbon comps and wirewounds
- Coating meets UL 94V-0
- Meets solvent test of Mil Standard 202, Method 215
- Cut and formed product is available on select sizes - contact Stackpole
- Higher or lower resistance values may be possible - contact Stackpole
- Flameproof
- 100% RoHS compliant and lead free without exemption
- Halogen free
- REACH compliant



### Electrical Specifications

Type/Code	Power Rating (W) @ 70°C	Maximum Working Voltage (V) <sup>(1)</sup>	Maximum Overload Voltage (V)	Dielectric Withstanding Voltage (V)	TCR (ppm/°C)	Ohmic Range <sup>(2)</sup> (Ω) and Tolerance		
						1%	2%	5%
RSF12	0.5	250	400	350	± 200	0.1 - 150K	0.1 - 75K	0.1 - 510K
RSF1	1	350	600	600	± 200	0.1 - 100K		0.1 - 510K
RSF2	2	350	600	600	± 200	0.1 - 120K		0.1 - 510K
RSF3	3	800	1000	750	± 200	0.1 - 470K	0.1 - 510K	0.1 - 510K
RSF5	5	1000	1000	750	± 200	0.1 - 470K	0.1 - 510K	0.1 - 510K
RSMF12	0.5	250	400	350	± 200	0.1 - 46.4K	0.1 - 47K	0.1 - 470K
RSMF1	1	350	600	500	± 200	0.1 - 75K		0.1 - 470K
RSMF2	2	350	600	500	± 200	0.1 - 100K		0.1 - 470K
RSMF3	3	500	800	600	± 200	0.1 - 118K	0.1 - 120K	0.1 - 470K
RSMF5	5	1000	1000	750	± 200	0.1 - 470K	0.1 - 510K	0.1 - 510K

(1) Lesser of  $\sqrt{P \cdot R}$  or maximum working voltage

(2) Contact Stackpole for resistance values outside the specified range

### Mechanical Specifications



Type/Code	A Body Length	B Body Diameter	C Lead Length (Bulk)	D Lead Diameter	Lead-Tape Specification	Unit
RSF12	0.35 ± 0.04	0.13 ± 0.03	1.10 ± 0.12	0.03 ± 0.003	0.250	inches
	9.00 ± 1.00	3.20 ± 0.80	28.00 ± 3.00	0.70 ± 0.08	6.35	mm
RSF1	0.43 ± 0.06	0.18 ± 0.04	1.10 ± 0.20	0.03 ± 0.002	0.250	inches
	11.00 ± 1.50	4.50 ± 1.00	28.00 ± 5.00	0.80 ± 0.05	6.35	mm
RSF2	0.59 ± 0.06	0.22 ± 0.04	1.18 ± 0.20	0.03 ± 0.004	0.250	inches
	15.00 ± 1.50	5.50 ± 1.00	30.00 ± 5.00	0.75 ± 0.10	6.35	mm
RSF3	0.69 ± 0.04	0.24 ± 0.02	1.38 ± 0.12	0.03 ± 0.002	0.250	inches
	17.50 ± 1.00	6.00 ± 0.50	35.00 ± 3.00	0.80 ± 0.05	6.35	mm
RSF5	0.96 ± 0.04	0.31 ± 0.02	1.38 ± 0.12	0.03 ± 0.002	0.250	inches
	24.50 ± 1.00	8.00 ± 0.50	35.00 ± 3.00	0.80 ± 0.05	6.35	mm
RSMF12	0.24 ± 0.03	0.09 ± 0.01	1.10 ± 0.12	0.02 ± 0.003	0.250	inches
	6.00 ± 0.80	2.30 ± 0.30	28.00 ± 3.00	0.55 ± 0.07	6.35	mm
RSMF1	0.35 ± 0.04	0.13 ± 0.03	1.10 ± 0.12	0.03 ± 0.003	0.250	inches
	9.00 ± 1.00	3.20 ± 0.80	28.00 ± 3.00	0.70 ± 0.08	6.35	mm
RSMF2	0.43 ± 0.06	0.18 ± 0.04	1.18 ± 0.20	0.03 ± 0.002	0.250	inches
	11.00 ± 1.50	4.50 ± 1.00	30.00 ± 5.00	0.80 ± 0.05	6.35	mm
RSMF3	0.59 ± 0.06	0.22 ± 0.04	1.18 ± 0.20	0.03 ± 0.004	0.250	inches
	15.00 ± 1.50	5.50 ± 1.00	30.00 ± 5.00	0.75 ± 0.10	6.35	mm
RSMF5	0.69 ± 0.04	0.24 ± 0.02	1.38 ± 0.08	0.03 ± 0.002	0.250	inches
	17.50 ± 1.00	6.00 ± 0.50	35.00 ± 2.00	0.80 ± 0.05	6.35	mm

# RSF / RSMF Series

General Purpose Metal Oxide Resistor

Stackpole Electronics, Inc.  
Resistive Product Solutions

Performance Characteristics			
Test	Test Method	Test Specification	Typical Results
Insulation Resistance	JIS C5201-1, IEC60115-1, 4.6	$\geq 1G \Omega$	$\geq 1G \Omega$
Voltage Proof	JIS C5201-1, IEC60115-1, 4.7	$\leq \pm (0.5\% + 0.05 \Omega)$   No mechanical damage	$< \pm 0.25\%$
Short Time Overload	JIS C5201-1, IEC60115-1, 4.13	$\leq \pm (0.75\% + 0.05 \Omega)$	$< \pm 0.1\%$
Resistance to Solder Heat	JIS C5201-1, IEC60115-1, 4.18	$\leq \pm (2.0\% + 0.05 \Omega)$	$< \pm 1.0\%$
Endurance at 70°C	JIS C5201-1, IEC60115-1, 4.25.1	$\leq \pm (5.0\% + 0.05 \Omega)$	$< \pm 2.0\%$
Robustness of Terminations	JIS C5201-1, IEC60115-1, 4.16	$\leq \pm (1.0\% + 0.05 \Omega)$	$< \pm 0.10\%$
Damp Heat (Steady state)	JIS C5201-1, IEC60115-1, 4.24	$\leq \pm (5\% + 0.05 \Omega)$	$< \pm 1.5\%$
Rapid Change of Temperature	JIS C5201-1, IEC60115-1, 4.19	$\leq \pm (1\% + 0.05 \Omega)$	$< \pm 0.2\%$
Resistance to Solvents	JIS C5201-1, IEC60115-1, 4.29	No damage to component or removal of marking	Pass
Intermittent Overload	JIS C5201-1, IEC60115-1, 4.39	$\leq \pm (2\% + 0.05 \Omega)$	$< \pm 0.3\%$
Accidental Overload (Flame resistance)	JIS C5201-1, IEC60115-1, 4.26	No flaming of gauze	Pass

Operating temperature range is -55°C to +200°C (RSF12, RSMF12, RSMF1)  
-55°C to +235°C (all others)

### Power Derating Curve:



### Surface Temperature Rise:



## Repetitive Pulse Information:

If repetitive pulses are applied to resistors, pulse wave form must be less than “pulse limiting voltage”, “pulse limiting current” or “pulse limiting wattage” calculated by the formula below.

$$V_p = K\sqrt{P \times R \times T/t}$$

$$I_p = K\sqrt{P/R \times T/t}$$

$$P_p = K^2 \times P \times T/t$$

Where:  $V_p$ : Pulse limiting voltage (V)  
 $I_p$ : Pulse limiting current (A)  
 $P_p$ : Pulse limiting wattage (W)  
 $P$ : Power rating (W)  
 $R$ : Nominal resistance (ohm)  
 $T$ : Repetitive period (sec)  
 $t$ : Pulse duration (sec)  
 $K$ : Coefficient: 0.8  
 $[V_r$ : Rated Voltage (V),  $I_r$ : Rated Current (A)]



Note 1: If  $T > 10 \rightarrow T = 10$  (sec),  $T / t > 1000 \rightarrow T / t = 1000$

Note 2: If  $T > 10$  and  $T / t > 1000$ , “Pulse Limiting power (Single pulse) is applied

Note 3: If  $V_p < V_r$  ( $I_p < I_r$  or  $P_p < P$ ),  $V_r$  ( $I_r$ ,  $P$ ) is  $V_p$  ( $I_p$ ,  $P_p$ )

Note 4: Pulse limiting voltage (current, wattage) is applied at less than rated ambient temperature.

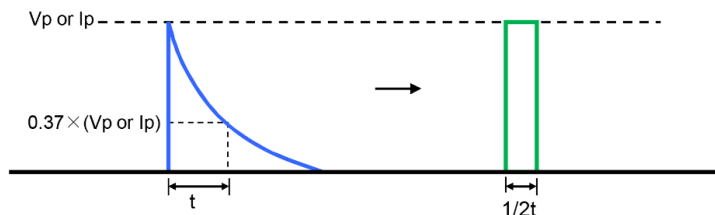
If ambient temperature is more than the rated temperature (70 °C), decrease power rating according to “Power Derating Curve”

Note 5: Assure sufficient margin for use period and conditions for “pulse limiting voltage”

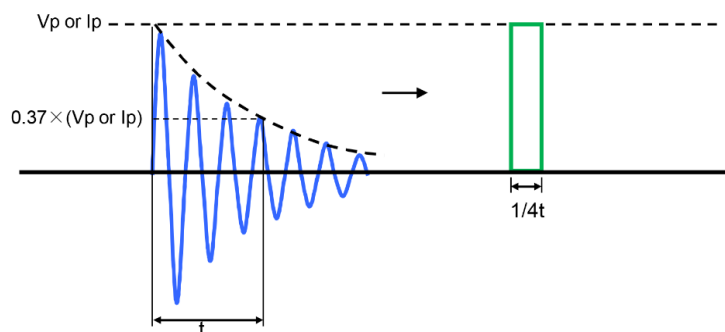
Note 6: If the pulse waveform is not square wave, judge after transform the waveform into square wave according to the “Waveform Transformation to Square Wave”.

## Waveform Transformation to Square Wave

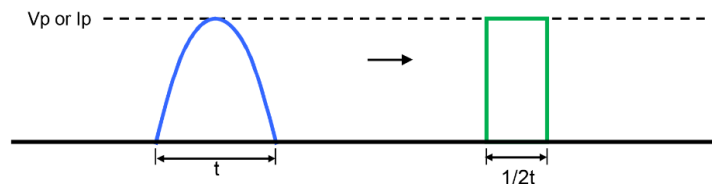
1. Discharge curve wave with time constant "t" → Square wave



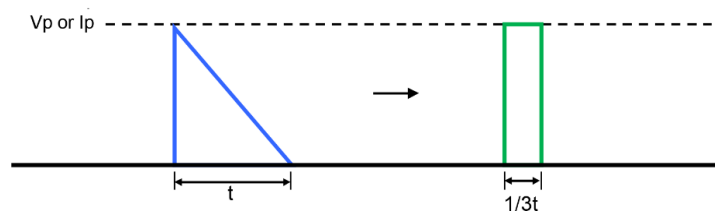
2. Damping oscillation wave with time constant of envelope "t" → Square wave



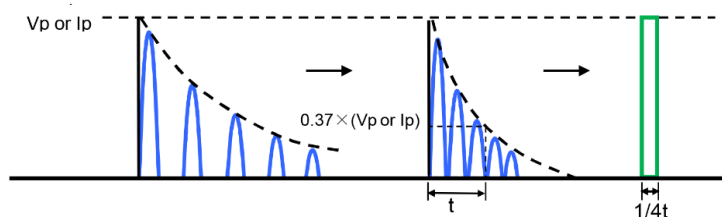
3. Half-wave rectification wave → Square wave



4. Triangular wave → Square wave



5. Special wave → Square wave



## Recommended Soldering Condition

### Flow Soldering:

- Pre-heating: 110°C MAX
- Peak temperature/duration: 260°C within 10 seconds (1<sup>st</sup>, 2<sup>nd</sup> wave total)
- Temperature profile (see chart on the right)

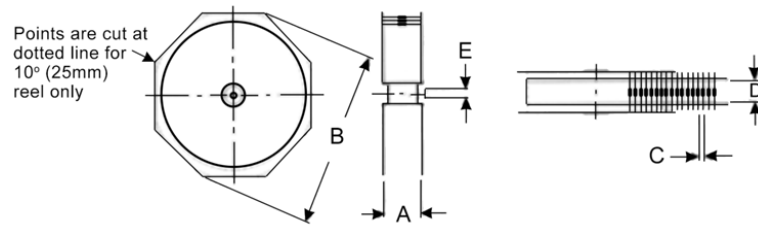
### Iron Soldering:

- 380°C, 5 seconds, once/terminal



## Reel Packaging Specifications

Reeled in accordance with EIA-296-F



Type/Code	A max <sup>(1)</sup>	B max	C	D <sup>(2)</sup>	Tape	Unit
RSF12	2.736	13.504	0.197 ± 0.020	2.063 ± 0.079	0.250	inches
	69.50	343.00	5.00 ± 0.50	52.40 ± 2.00	6.35	mm
RSF1	2.815	13.504	0.197 ± 0.020	2.063 ± 0.079	0.250	inches
	71.50	343.00	5.00 ± 0.50	52.40 ± 2.00	6.35	mm
RSF2	3.524	13.504	0.394 ± 0.020	2.500 ± 0.079	0.250	inches
	89.50	343.00	10.00 ± 0.50	63.50 ± 2.00	6.35	mm
RSF3	3.740	12.008	0.394 ± 0.020	2.874 ± 0.079	0.250	inches
	95.00	305.00	10.00 ± 0.50	73.00 ± 2.00	6.35	mm
RSF5	4.331	12.008	0.394 ± 0.020	3.465 ± 0.079	0.250	inches
	110.00	305.00	10.00 ± 0.50	88.00 ± 2.00	6.35	mm
Type/Code	A max <sup>(1)</sup>	B max	C	D <sup>(2)</sup>	Tape	Unit
RSMF12	2.618	13.504	0.197 ± 0.020	2.063 ± 0.079	0.250	inches
	66.50	343.00	5.00 ± 0.50	52.40 ± 2.00	6.35	mm
RSMF1	2.736	13.504	0.197 ± 0.020	2.063 ± 0.079	0.250	inches
	69.50	343.00	5.00 ± 0.50	52.40 ± 2.00	6.35	mm
RSMF2	2.815	13.504	0.197 ± 0.020	2.063 ± 0.079	0.250	inches
	71.50	343.00	5.00 ± 0.50	52.40 ± 2.00	6.35	mm
RSMF3	3.524	13.504	0.394 ± 0.020	2.500 ± 0.079	0.250	inches
	89.50	343.00	10.00 ± 0.50	63.50 ± 2.00	6.35	mm
RSMF5	3.740	12.008	0.394 ± 0.020	2.874 ± 0.079	0.250	inches
	95.00	305.00	10.00 ± 0.50	73.00 ± 2.00	6.35	mm

Dimension "E": This is a non-critical dimension that does not have a tolerance in the standard.

Range of diameters is from 0.547 inches (13.90 mm) to 1.500 inches (38.10 mm).

(1) Reference value only. The "A" dimension shall be governed by the overall length of the taped component.

The distance between flanges shall be 0.059 inches (1.50 mm) to 0.315 (8.00 mm) greater than the overall component.

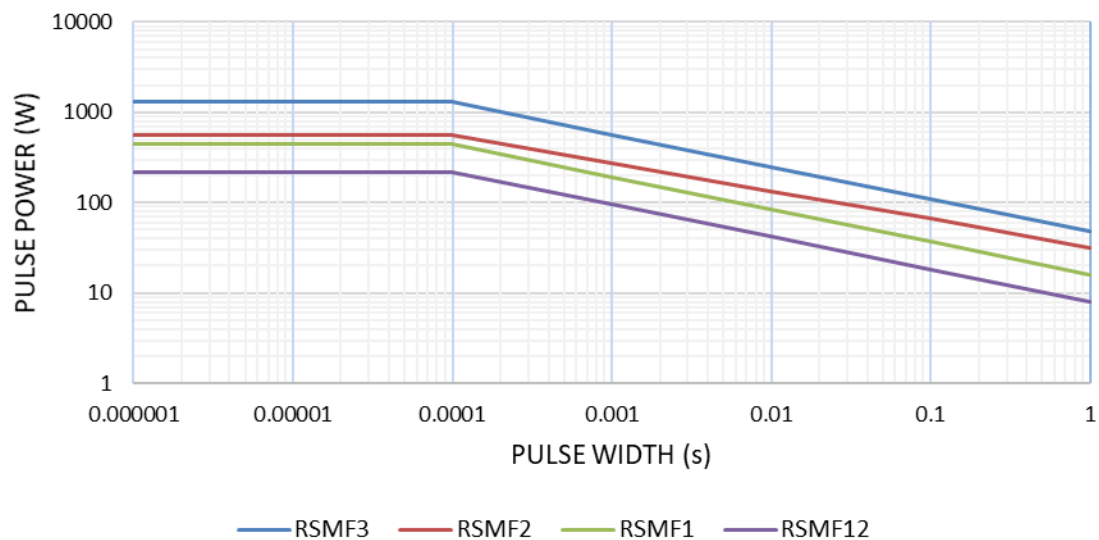
(2) The given dimension "D" expresses the standard width spacing. A 26 mm narrow spacing is available as option "N" packaging code.



## Pana-Sert Packaging Specifications (cont.)

Symbol	Description	PRSM12	PRSF1 / PRSM2
F	Lead-lead distance	0.200 +0.24 / -0.008 5.08 +0.60 / -0.20	
Alpha	Performing angle	45° max	
Δh	Component alignment	0.000 ±0.079 0.00 ±2.00	
Δg	Component alignment	0.000 ±0.118 0.00 ±3.00	
W	Tape width	0.709 +0.039 / -0.031 18.00 +1.00 / -0.80	
W0	Hold down tape width	0.492 min. 12.50 min.	
W1	Hole position	0.354 ±0.020 9.00 ±0.50	
W2	Hold down tape position	0.079 +0 / -0.059 2.00 +0 / -1.50	
H	Distance to tape center	0.748 ±0.039 19.00 ±1.00	
H0	Lead wire clinch height	0.630 ±0.020 16.00 ±0.50	
I	Lead wire portrait	0.039 max. 1.00 max.	
ØD0	Feed hole diameter	0.157 ±0.008 4.00 ±0.20	
i	Total tape thickness	0.028 max. 0.70 max.	
L	Length of shipped lead	0.433 max. 11.00 max.	

## Pulse Limiting Power (one pulse) / RSMF Series ≤ 5Ω



## Pulse Limiting Power (one pulse) / RSMF Series > 5Ω



## RoHS Compliance

Stackpole Electronics has joined the worldwide effort to reduce the amount of lead in electronic components and to meet the various regulatory requirements now prevalent, such as the European Union's directive regarding "Restrictions on Hazardous Substances" (RoHS 3). As part of this ongoing program, we periodically update this document with the status regarding the availability of our compliant components. All our standard part numbers are compliant to EU Directive 2011/65/EU of the European Parliament as amended by Directive (EU) 2015/863/EU as regards the list of restricted substances.

### RoHS Compliance Status

Standard Product Series	Description	Package / Termination Type	Standard Series RoHS Compliant	Lead-Free Termination Composition	Lead-Free Mfg. Effective Date (Std Product Series)	Lead-Free Effective Date Code (YY/WW)
RSF	General Purpose Metal Oxide Leaded Resistor	Axial	YES	99.3/0.7 Sn/Cu 100% Matte Sn	Apr-05 (Japan) Jan-04 (Taiwan, China)	05/14 04/01
RSMF	Mini-Metal Oxide Leaded Resistor	Axial	YES	99.3/0.7 Sn/Cu 100% Matte Sn	Apr-05 (Japan) Jan-04 (Taiwan, China)	05/14 04/01

### "Conflict Metals" Commitment

We at Stackpole Electronics, Inc. are joined with our industry in opposing the use of metals mined in the "conflict region" of the Eastern Democratic Republic of the Congo (DRC) in our products. Recognizing that the supply chain for metals used in the electronics industry is very complex, we work closely with our own suppliers to verify to the extent possible that the materials and products we supply do not contain metals sourced from this conflict region. As such, we are in compliance with the requirements of Dodd-Frank Act regarding Conflict Minerals.

### Compliance to "REACH"

We certify that all passive components supplied by Stackpole Electronics, Inc. are SVHC (Substances of Very High Concern) free and compliant with the requirements of EU Directive 1907/2006/EC, "The Registration, Evaluation, Authorization and Restriction of Chemicals", otherwise referred to as REACH. Contact us for complete list of REACH Substance Candidate List.

# RSF / RSMF Series

## General Purpose Metal Oxide Resistor

Stackpole Electronics, Inc.  
Resistive Product Solutions

### Environmental Policy

It is the policy of Stackpole Electronics, Inc. (SEI) to protect the environment in all localities in which we operate. We continually strive to improve our effect on the environment. We observe all applicable laws and regulations regarding the protection of our environment and all requests related to the environment to which we have agreed. We are committed to the prevention of all forms of pollution.

### How to Order

Product Series		Power Rating		Tolerance			Packaging			Resistance Value	
Code	Description	Size	W	Code	Tol	Value	Code	Description	Size	Quantity	
RSF	Metal Oxide	12	0.5	F	1%	E96	T	Tape and Reel	RSMF12, PRSM12	5000	Four characters with the multiplier used as the decimal holder.  0.22 ohm = R220 33.2 ohm = 33R2 10.2 Kohm = 10K2 1 Mohm = 1M00
RSMF	Mini	1	1	G	2%	E24			RSF12, RSF1	2500	
PRSF	Panasert	2	2	J	5%				RSMF1, RSMF2	2000	
PRSM	Panasert Mini	3	3						PRSF1, PRSM2	1000	
		5	5						RSF2, RSMF3	1000	
							T	Tape and Reel	RSF5	500	
							A	Ammo	RSMF12	5000	
									RSF12; RSMF1, PRSM12	2000	
									RSF1, RSF2, RSMF2, PRSF1, PRSM2, RSMF3	1000	
							B	Bulk	RSF3, RSF5, RSMF5	500	
									All Sizes	1000	

## OUR CERTIFICATE

DiGi provide top-quality products and perfect service for customer worldwide through standardization, technological innovation and continuous improvement. DiGi through third-party certification, we stricly control the quality of products and services. Welcome your RFQ to

Email: [Info@DiGi-Electronics.com](mailto:Info@DiGi-Electronics.com)



Tel: +00 852-30501935

RFQ Email: [Info@DiGi-Electronics.com](mailto:Info@DiGi-Electronics.com)

DiGi is a global authorized distributor of electronic components.