

# WW12FT4R75 Datasheet

www.digi-electronics.com



https://www.DiGi-Electronics.com

DiGi Electronics Part Number	WW12FT4R75-DG
Manufacturer	<a href="#">Stackpole Electronics Inc</a>
Manufacturer Product Number	WW12FT4R75
Description	RES 4.75 OHM 1% 0.4W AXIAL
Detailed Description	4.75 Ohms $\pm$ 1% 0.4W Through Hole Resistor Axial Moisture Resistant Wirewound

This model WW12FT4R75 is available at DiGi Electronics.

DiGi Electronics offers a global database of semiconductor and electronic component datasheets.

We welcome your inquiries regarding pricing, lead time, or other product-related questions.

 [Request a Quote](#)

 [Datasheet Search](#)



Tel: +00 852-30501935

RFQ Email: [Info@DiGi-Electronics.com](mailto:Info@DiGi-Electronics.com)

DiGi is a global authorized distributor of electronic components.

## Purchase and inquiry

Manufacturer Product Number:

WW12FT4R75

Series:

WW

Resistance:

4.75 Ohms

Power (Watts):

0.4W

Features:

Moisture Resistant

Operating Temperature:

-55°C ~ 350°C

Supplier Device Package:

Axial

Height - Seated (Max):

-

Failure Rate:

-

Manufacturer:

Stackpole Electronics Inc

Product Status:

Active

Tolerance:

±1%

Composition:

Wirewound

Temperature Coefficient:

±50ppm/°C

Package / Case:

Axial

Size / Dimension:

0.110" Dia x 0.312" L (2.79mm x 7.92mm)

Number of Terminations:

2

## Environmental & Export classification

RoHS Status:

ROHS3 Compliant

REACH Status:

REACH Unaffected

HTSUS:

8533.21.0080

Moisture Sensitivity Level (MSL):

Not Applicable

ECCN:

EAR99

**WW / MWW / NWW / WWS Series**  
 General Purpose and Precision Wirewound Resistor

**Stackpole Electronics, Inc.**  
 Resistive Product Solutions

**Features:**

- WWS offers miniature size at higher power rating
- High performance for low cost
- High power to size ratio
- High temperature silicone coating
- MWW/NMWW – completely molded construction with welded terminations
- Complete welded terminations
- Tinned copper leads
- Available in non-inductive styles
- Tighter tolerances may be available for non-inductive styles - contact Stackpole with requirements
- Higher operating temperatures available
- "B" packaging code denotes bulk packaging - contact Stackpole for package quantities
- WW/NWW/WWS meet UL94V-0
- RoHS compliant, REACH compliant, halogen free, and lead free without exemption



Electrical Specifications – WW, WWS, MWW								
Type/Code	MIL-R-26 Ref.	Power Rating (Watts)		TCR (ppm/°C)	Ohmic Range (Ω) and Tolerance (*)			
		@ 125°C	@ 70°C		0.1%	0.5%	1%	5%
WW12	-	0.4	0.5	< 1Ω = ± 90 ppm/°C 1Ω to 10Ω = ± 50 ppm/°C > 10Ω = ± 20 ppm/°C	5 - 2K	3 - 2K	5 - 2K	
WW1	-	1	1.1		2 - 3K			
WW1A	RW-70	1	1.3		1 - 5K			
WW2	RW-69	1.5	2.1		1 - 10K	0.5 - 10K		
WWS2	-	2.5	2.6		1 - 10K	0.5 - 10K		
WW2A	-	2.5	2.6		1 - 10K	0.5 - 10K		
WW3	RW-79	3	3.2		1 - 22K	0.5 - 22K		
WWS3	-	3	3.2		3 - 10K	1 - 10K		
WW3A	-	3	3.4		1 - 30K	0.5 - 30K		
WW4	-	4	4.3		1 - 40K	0.5 - 40K		
WWS4	RW-79	4	4.3		1 - 22K	0.5 - 22K		
WW5	RW-67, RW-74	5	5.1		1 - 50K	0.5 - 50K		
WWS5	-	5	5.1		1 - 40K	0.5 - 40K		
WW7	-	6.5	7.2		1 - 70K	0.5 - 70K		
WWS7	RW-67, RW-74	6.5	7.2		1 - 50K	0.5 - 50K		
WW7B	-	7	7.7		1 - 70K	0.5 - 70K		
WW10	RW-78	10	11		1 - 100K	0.5 - 100K		
WWS10	-	10	11		1 - 70K	0.5 - 70K		
MWW1	RW-70	1	1.3		5 - 2K			
MWW3	RW-79	3	3.2		3 - 20K			
MWW5	RW-67, RW-74	5	5.5	2 - 40K				
MWW10	RW-68, RW-74	10	11	2 - 80K				

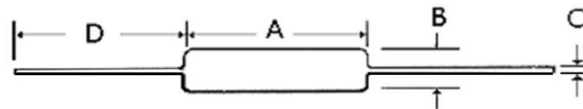
(\*) Other resistance values available - contact Stackpole for details.  
 Max Voltage Rating is  $\sqrt{P \cdot R}$

Electrical Specifications – Non-Inductive Styles					
Type/Code	MIL-R-26 Ref.	Power Rating (Watts)		TCR (ppm/°C)	Ohmic Range (Ω) and Tolerance <sup>(*)</sup>
		@ 125°C	@ 70°C		1% and 5%
NWW12	-	0.4	0.5	< 1Ω = ± 90 ppm/°C 1Ω to 10Ω = ± 50 ppm/°C > 10Ω = ± 20 ppm/°C	10 - 1K
NWW1	-	1	1.1		2 - 1.5K
NWW1A	RW-70	1	1.3		1 - 2.5K
NWW2	RW-69	1.5	2.1		1 - 5K
NWWS2	-	2.5	2.6		1 - 5K
NWW2A	-	2.5	2.6		1 - 5K
NWW3	RW-79	3	3.2		1 - 11K
NWWS3	-	3	3.2		3 - 5K
NWW3A	-	3	3.4		1 - 15K
NWW4	-	4	4.3		1 - 20K
NWWS4	RW-79	4	4.3		1 - 11K
NWW5	RW-67, RW-74	5	5.1		1 - 25K
NWWS5	-	5	5.1		1 - 20K
NWW7	-	6.5	7.2		1 - 35K
NWWS7	RW-67, RW-74	6.5	7.2	1 - 25K	
NWW7B	-	7	7.7	1 - 35K	
NWW10	RW-78	10	11	1 - 50K	
NWWS10	-	10	11	1 - 35K	
NMWW1	RW-70	1	1.3	5 - 1K	
NMWW3	RW-79	3	3.2	3 - 10K	
NMWW5	RW-67, RW-74	5	5.5	2 - 20K	
NMWW10	RW-68, RW-74	10	11	2 - 40K	

(\*) Other resistance values available - contact Stackpole for details.

Max Voltage Rating is  $\sqrt{P \cdot R}$

**Mechanical Specifications**



Type/Code	A	B	C	D (Bulk) <sup>(1)</sup>	Unit
WW12 / NWW12	0.312 ± 0.062 7.92 ± 1.57	0.110 ± 0.031 2.79 ± 0.79	0.025 ± 0.002 0.64 ± 0.05	1.500 typ. 38.10 typ.	inches mm
WW1, WWS2 / NWW1, NWWS2	0.375 ± 0.062 9.53 ± 1.57	0.110 ± 0.031 2.79 ± 0.79	0.025 ± 0.002 0.64 ± 0.05	1.500 typ. 38.10 typ.	inches mm
WW1A / NWW1A	0.420 ± 0.062 10.67 ± 1.57	0.110 ± 0.031 2.79 ± 0.79	0.025 ± 0.002 0.64 ± 0.05	1.500 typ. 38.10 typ.	inches mm
WW2, WWS3 / NWW2, NWWS3	0.370 ± 0.062 9.40 ± 1.57	0.156 ± 0.031 3.96 ± 0.79	0.032 ± 0.002 0.81 ± 0.05	1.500 typ. 38.10 typ.	inches mm
WW2A / NWW2A	0.550 ± 0.062 13.97 ± 1.57	0.156 ± 0.031 3.96 ± 0.79	0.032 ± 0.002 0.81 ± 0.05	1.500 typ. 38.10 typ.	inches mm
WW3, WWS4 / NWW3, NWWS4	0.560 ± 0.062 14.22 ± 1.57	0.187 ± 0.031 4.75 ± 0.79	0.032 ± 0.002 0.81 ± 0.05	1.500 typ. 38.10 typ.	inches mm
WW3A / NWW3A	0.500 ± 0.062 12.70 ± 1.57	0.218 ± 0.031 5.54 ± 0.79	0.032 ± 0.002 0.81 ± 0.05	1.500 typ. 38.10 typ.	inches mm
WW4, WWS5 / NWW4, NWWS5	0.700 ± 0.062 17.78 ± 1.57	0.270 ± 0.031 6.86 ± 0.79	0.036 ± 0.002 0.91 ± 0.05	1.500 typ. 38.10 typ.	inches mm

Mechanical Specifications (cont.)					
Type/Code	A	B	C	D (Bulk) <sup>(1)</sup>	Unit
WW5, WWS7 / NWW5, NWWS7	0.875 ± 0.062	0.312 ± 0.031	0.036 ± 0.002	1.500 typ.	inches
	22.23 ± 1.57	7.92 ± 0.79	0.91 ± 0.05	38.10 typ.	mm
WW7 / NWW7	1.025 ± 0.062	0.312 ± 0.031	0.036 ± 0.002	1.500 typ.	inches
	26.04 ± 1.57	7.92 ± 0.79	0.91 ± 0.05	38.10 typ.	mm
WW7B, WWS10 / NWW7B, NWWS10	1.225 ± 0.062	0.312 ± 0.031	0.036 ± 0.002	1.500 typ.	inches
	31.12 ± 1.57	7.92 ± 0.79	0.91 ± 0.05	38.10 typ.	mm
WW10 / NWW10 <sup>(2)</sup>	1.780 ± 0.062	0.375 ± 0.031	0.040 ± 0.002	1.500 typ.	inches
	45.21 ± 1.57	9.53 ± 0.79	1.02 ± 0.05	38.10 typ.	mm
MWW1 / NMWW1	0.385 ± 0.062	0.135 ± 0.031	0.032 ± 0.002	1.500 typ.	inches
	9.78 ± 1.57	3.43 ± 0.79	0.81 ± 0.05	38.10 typ.	mm
MWW3 / NMWW3	0.560 ± 0.062	0.205 ± 0.031	0.032 ± 0.002	1.500 typ.	inches
	14.22 ± 1.57	5.21 ± 0.79	0.81 ± 0.05	38.10 typ.	mm
MWW5 / NMWW5	0.925 ± 0.062	0.330 ± 0.031	0.036 ± 0.002	1.500 typ.	inches
	23.50 ± 1.57	8.38 ± 0.79	0.91 ± 0.05	38.10 typ.	mm
MWW10 / NMWW10	1.965 ± 0.062	0.480 ± 0.031	0.040 ± 0.002	1.500 typ.	inches
	49.91 ± 1.57	12.19 ± 0.79	1.02 ± 0.05	38.10 typ.	mm

(1) See "Resistor Packaging Specification Document" for lead length dimension for tape and reel packaged product.

(2) Lead diameter (C) available in 0.036" / 0.91 mm.

Performance Characteristics		
Test	Test Condition	Test Specification
Moisture Resistance	1000 hours, 95% R.H., 40°C	1% max
Load Life	1000 hours, cycled power 1.5 hours ON, 0.5 hours OFF, 25°C	1%
Temperature Cycling	5 cycles, -55 to 200°C	0.5%
Short Time Overload	5 times rated power for 5 seconds	1%
Dielectric Withstand Voltage	Resistor leads are grounded and high potential probe is touched to the resistor body	500 V for (N)WW12, 1, 1A and 2S. 1000 V for all others

Operating Temperature Range is -55 to +350°C

**Power Derating Curve:**



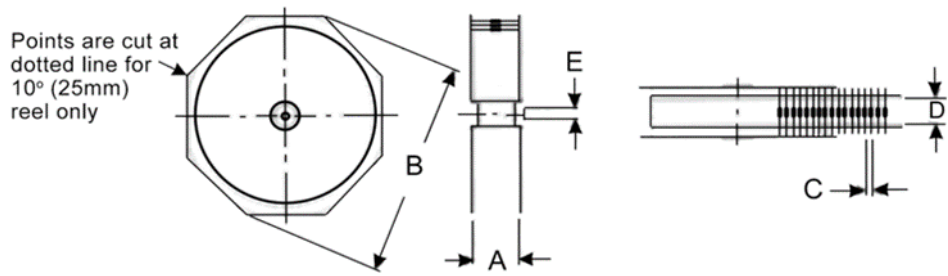
**Recommended Soldering Condition**

- Flow Soldering:
- Pre-heating: 110°C MAX
  - Peak temperature/duration: 260°C within 10 seconds (1<sup>st</sup>, 2<sup>nd</sup> wave total)
  - Temperature profile (see chart on the right)

- Iron Soldering:
- 380°C, 5 seconds, once/terminal



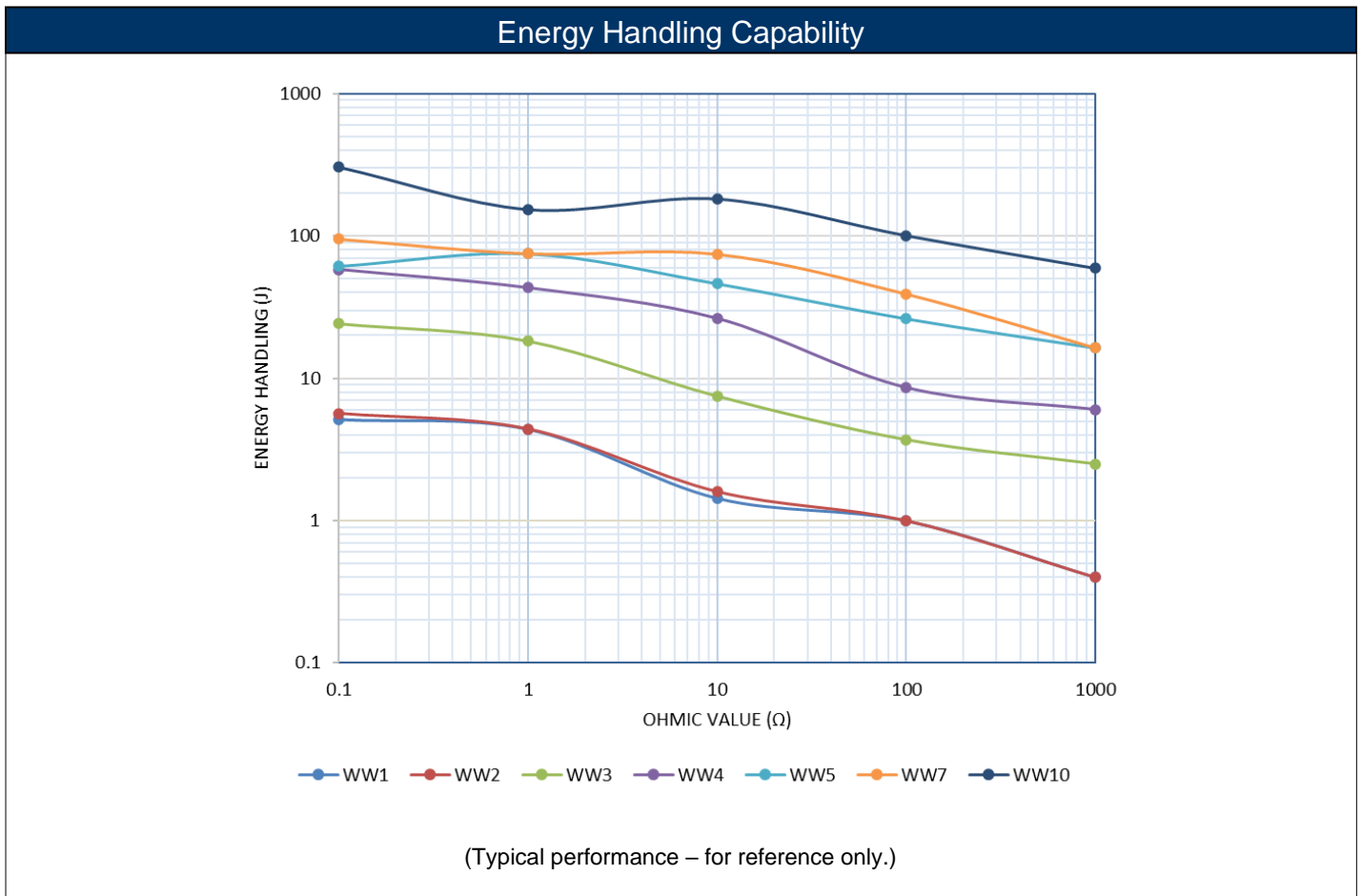
**Reel Specifications**



Type/Code	A max <sup>(1)</sup>	B max	C	D	Tape	Unit
WW12	2.880 73.15	11.000 279.40	0.197 ± 0.020 5.00 ± 0.50	2.063 ± 0.079 52.40 ± 2.00	0.250 6.35	inches mm
WW1, WWS2 NWW1, NWS2	2.880 73.15	11.000 279.40	0.197 ± 0.020 5.00 ± 0.50	2.063 ± 0.079 52.40 ± 2.00	0.250 6.35	inches mm
WW1A, NWW1A	2.880 73.15	11.000 279.40	0.197 ± 0.020 5.00 ± 0.50	2.063 ± 0.079 52.40 ± 2.00	0.250 6.35	inches mm
WW2, WWS3 NWW2, NWS3	2.880 73.15	11.000 279.40	0.197 ± 0.020 5.00 ± 0.50	2.063 ± 0.079 52.40 ± 2.00	0.250 6.35	inches mm
WW2A, NWW2A	2.880 73.15	11.000 279.40	0.197 ± 0.020 5.00 ± 0.50	2.063 ± 0.079 52.40 ± 2.00	0.250 6.35	inches mm
WW3, WWS4 NWW3, NWS4	2.880 73.15	11.000 279.40	0.197 ± 0.020 5.00 ± 0.50	2.063 ± 0.079 52.40 ± 2.00	0.250 6.35	inches mm
WW3A, NWW3A	2.880 73.15	11.000 279.40	0.394 ± 0.020 10.00 ± 0.50	2.063 ± 0.079 52.40 ± 2.00	0.250 6.35	inches mm
WW4, WWS5 NWW4, NWS5	2.880 73.15	11.000 279.40	0.394 ± 0.020 10.00 ± 0.50	2.500 ± 0.079 63.50 ± 2.00	0.250 6.35	inches mm
WW5, WWS7 NWW5, NWS7	3.740 95.00	11.000 279.40	0.394 ± 0.020 10.00 ± 0.50	2.874 ± 0.079 73.00 ± 2.00	0.250 6.35	inches mm
WW7, NWW7	3.740 95.00	11.000 279.40	0.394 ± 0.020 10.00 ± 0.50	2.874 ± 0.079 73.00 ± 2.00	0.250 6.35	inches mm
WW7B, WWS10 NWW7B, NWS10	3.740 95.00	11.000 279.40	0.394 ± 0.020 10.00 ± 0.50	2.874 ± 0.079 73.00 ± 2.00	0.250 6.35	inches mm

Packaging Specifications (cont.)						
Type/Code	A max <sup>(1)</sup>	B max	C	D	Tape	Unit
WW10, NWW10	5.100	11.000	0.394 ± 0.020	4.375 ± 0.079	0.250	inches
	129.54	279.40	10.00 ± 0.50	111.13 ± 2.00	6.35	mm
MWW1, NMWW1	3.311	13.504	0.197 ± 0.020	2.063 ± 0.079	0.250	inches
	84.10	343.00	5.00 ± 0.50	52.40 ± 2.00	6.35	mm
MWW3, NMWW3	3.484	13.504	0.394 ± 0.020	2.063 ± 0.079	0.250	inches
	88.50	343.00	10.00 ± 0.50	52.40 ± 2.00	6.35	mm
MWW5, NMWW5	3.850	13.504	0.394 ± 0.020	2.874 ± 0.079	0.250	inches
	97.80	343.00	10.00 ± 0.50	73.00 ± 2.00	6.35	mm
MWW10, NMWW10	4.764	13.504	0.600 ± 0.020	4.375 ± 0.079	0.250	inches
	121.00	343.00	15.24 ± 0.50	111.13 ± 2.00	6.35	mm

Dimension "E": This is a non-critical dimension that does not have a tolerance in the standard.  
 Range of diameters is from 0.547 inches (13.90 mm) to 1.500 inches (38.10 mm).  
 (1) Reference value only. The "A" dimension shall be governed by the overall length of the taped component.  
 The distance between flanges shall be 0.059 inches (1.50 mm) to 0.315 (8.00 mm) greater than the overall component.



## RoHS Compliance

Stackpole Electronics has joined the worldwide effort to reduce the amount of lead in electronic components and to meet the various regulatory requirements now prevalent, such as the European Union's directive regarding "Restrictions on Hazardous Substances" (RoHS 3). As part of this ongoing program, we periodically update this document with the status regarding the availability of our compliant components. All our standard part numbers are compliant to EU Directive 2011/65/EU of the European Parliament as amended by Directive (EU) 2015/863/EU as regards the list of restricted substances.

RoHS Compliance Status						
Standard Product Series	Description	Package / Termination Type	Standard Series RoHS Compliant	Lead-Free Termination Composition	Lead-Free Mfg. Effective Date (Std Product Series)	Lead-Free Effective Date Code (YY/WW)
WW	General Purpose and Precision Wirewound Resistor (Standard)	Axial	YES	100% Matte Sn	Jan-06	06/01
NWW	General Purpose and Precision Wirewound Resistor (Non-Inductive)	Axial	YES	100% Matte Sn	Jan-06	06/01
WWS	General Purpose and Precision Wirewound Resistor (Mini)	Axial	YES	100% Matte Sn	Jan-06	06/01
NWWS	General Purpose and Precision Wirewound Resistor (Non-Inductive, Mini)	Axial	YES	100% Matte Sn	Jan-06	06/01
MWW	General Purpose and Precision Wirewound Resistor (Molded)	Axial	YES	100% Matte Sn	Jan-06	06/01
NMWW	General Purpose and Precision Wirewound Resistor (Non-Inductive, Molded)	Axial	YES	100% Matte Sn	Jan-06	06/01

## "Conflict Metals" Commitment

We at Stackpole Electronics, Inc. are joined with our industry in opposing the use of metals mined in the "conflict region" of the eastern Democratic Republic of the Congo (DRC) in our products. Recognizing that the supply chain for metals used in the electronics industry is very complex, we work closely with our own suppliers to verify to the extent possible that the materials and products we supply do not contain metals sourced from this conflict region. As such, we are in compliance with the requirements of Dodd-Frank Act regarding Conflict Minerals.

## Compliance to "REACH"

We certify that all passive components supplied by Stackpole Electronics, Inc. are SVHC (Substances of Very High Concern) free and compliant with the requirements of EU Directive 1907/2006/EC, "The Registration, Evaluation, Authorization and Restriction of Chemicals", otherwise referred to as REACH. Contact us for complete list of REACH Substance Candidate List.

## Environmental Policy

It is the policy of Stackpole Electronics, Inc. (SEI) to protect the environment in all localities in which we operate. We continually strive to improve our effect on the environment. We observe all applicable laws and regulations regarding the protection of our environment and all requests related to the environment to which we have agreed. We are committed to the prevention of all forms of pollution.

**WW / MWW / NWW / WWS Series**  
 General Purpose and Precision Wirewound Resistor

**Stackpole Electronics, Inc.**  
 Resistive Product Solutions

**How to Order**



Series	Code	Power Rating (W)		Tolerance		Packaging				Resistance Value
		@ 125°C	@ 70°C	Code	Tol	Code	Description	Size	Qty	
WW (Standard) NWW (Non-inductive)	12	0.4	0.5	B	0.1%	T	11" Tape and Reel	WW12 / NWW12	2500	Four characters with the multiplier used as the decimal holder.  0.5 ohm = R500 1 ohm = 1R00 10 Kohm = 10K0
	1	1	1.1	D	0.5%			WW1 / NWW1		
	1A	1	1.3	F	1%			WWS2 / NWS2		
	2	1.5	2.1	J	5%			WW1A / NWW1A		
	2A	2.5	2.6					MWW1 / NMWW1		
	3	3	3.2					WW2 / NWW2	2000	
	3A	3	3.4					WWS3 / NWS3		
	4	4	4.3					WW2A / NWW2A		
	5	5	5.1					WW3 / NWW3		
	7	6.5	7.2					WWS4 / NWS4		
WWS (Mini) NWS (Non-inductive Mini)	7B	7	7.7			MWW3 / NMWW3	500			
	10	10	11.0			WW3A / NWW3A				
	2	2.5	2.6			WW4 / NWW4				
	3	3	3.2			WWS5 / NWS5				
	4	4	4.3			WW5 / NWW5				
MWW (Molded) NMWW (Non-inductive Molded)	5	5	5.1			WWS7 / NWS7	250			
	7	6.5	7.2			WW7 / NWW7				
	10	10	11.0			WW7B / NWW7B				
	1	1	1.3			WWS10 / NWS10				
	3	3	3.2			MWW5 / NMWW5				
	5	5	5.5			WW10 / NWW10				
	10	10	11.0			MWW10 / NMWW10				
						B	Bulk	Contact Stackpole for package quantities.		

## OUR CERTIFICATE

DiGi provide top-quality products and perfect service for customer worldwide through standardization, technological innovation and continuous improvement. DiGi through third-party certification, we strictly control the quality of products and services. Welcome your RFQ to

Email: [Info@DiGi-Electronics.com](mailto:Info@DiGi-Electronics.com)



Tel: +00 852-30501935

RFQ Email: [Info@DiGi-Electronics.com](mailto:Info@DiGi-Electronics.com)

DiGi is a global authorized distributor of electronic components.