




DEM F09P Datasheet

DiGi Electronics Part Number	DEM F09P-DG
Manufacturer	Amphenol ICC (FCI)
Manufacturer Product Number	DEM F09P
Description	CONN D-SUB PLUG 9POS SLDR CUP

<https://www.DiGi-Electronics.com>

Detailed Description 9 Position D-Sub Plug, Male Pins Connector
This model DEM F09P is available at DiGi Electronics.

DiGi Electronics offers a global database of semiconductor and electronic component datasheets. We welcome your inquiries regarding pricing, lead time, or other product-related questions.

 [Request a Quote](#)

 [Datasheet Search](#)

Tel: +00 852 30501935

RFQ Email: Info@DiGi-Electronics.com

DiGi is a global authorized distributor of electronic components.

Purchase and inquiry

Manufacturer Product Number:

DEMF09P

Series:

DM HE501

Connector Style:

D-Sub

Number of Positions:

9

Mounting Type:

Free Hanging (In-Line)

Contact Type:

Signal

Termination:

Solder Cup

Contact Finish:

Gold

Ingress Protection:

-

Current Rating (Amps):

7.5A per Contact

Features:

Manufacturer:

Amphenol ICC (FCI)

Product Status:

Active

Connector Type:

Plug, Male Pins

Number of Rows:

2

Shell Size, Connector Layout:

1 (DE, E)

Flange Feature:

Housing/Shell (Unthreaded)

Shell Material, Finish:

Steel, Yellow Cadmium Plated

Contact Finish Thickness:

-

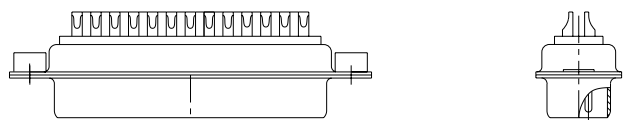
Material Flammability Rating:

UL94 V-0

Backset Spacing:

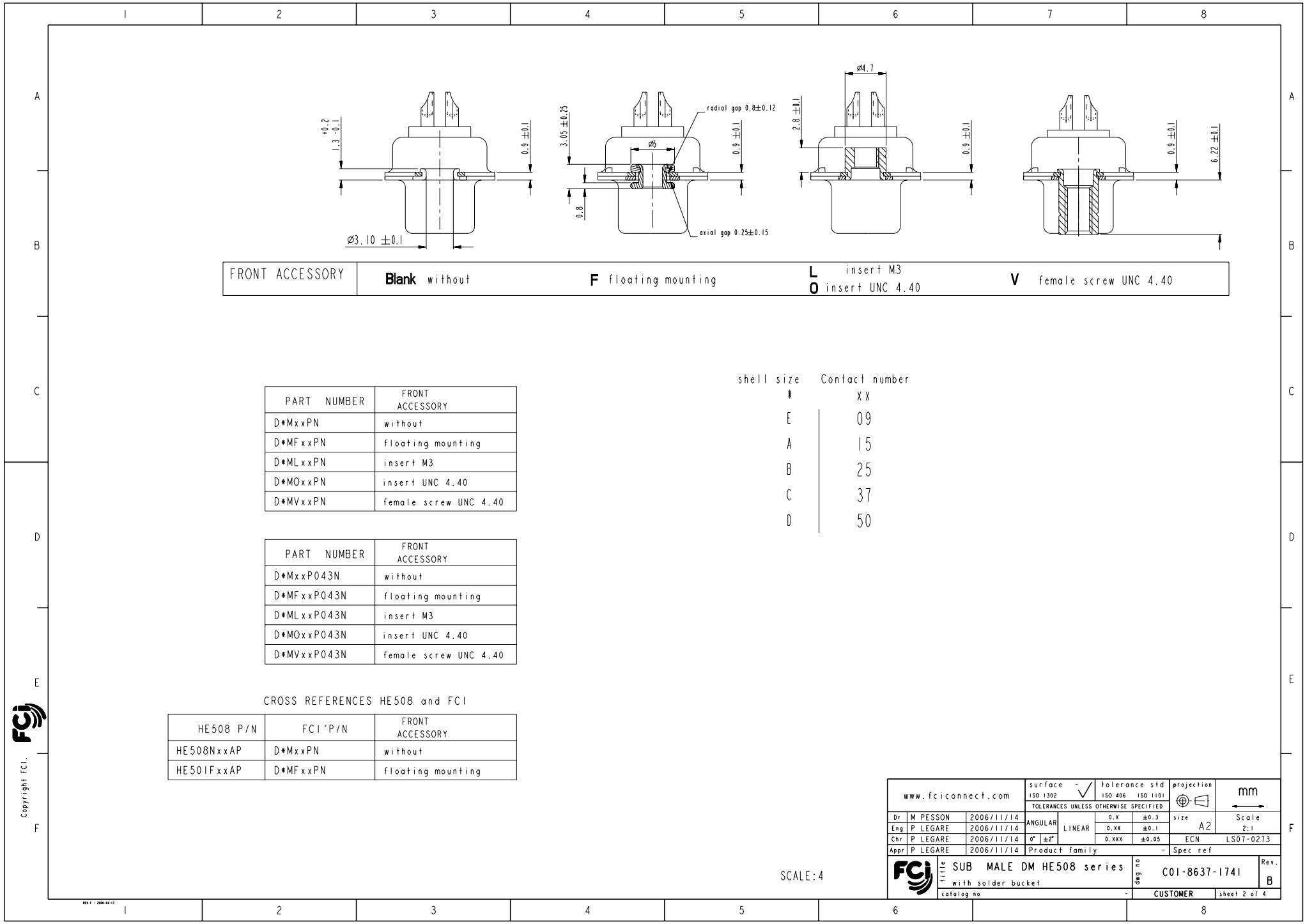
-

Voltage Rating:

<p>A</p> <p><u>REFERENCE SPECIFICATIONS</u> -NFC 93425 (in compliance with HE 508)</p> <p><u>PHYSICAL CHARACTERISTICS</u> -INSULATOR MATERIAL: THERMOSET UL94V0 BRASS GOLD OVER NICKEL</p> <p>-ACCESSORIES: BRASS Cadmium plated, yellow passivation</p> <p>-SHELLS: STEEL Cadmium plated, yellow passivation</p>			<p>Series ← DBML25P043N</p> <p>Shell size: E A B C D ← see sheet 2</p> <p>Front accessory definition ← see sheet 2</p> <p>Blank : without accessory F : floating mounting L : threaded insert M3 O : threaded insert UNC 4-40 V : female screw UNC 4-40</p> <p>Contact number (see sheet 2) ← 9,15,25,37,50</p> <p>Contacts ←</p> <p>P Pin</p>			<p>Obligatory for HE508 →</p>	<p>B</p>																																																																																										
<p>B</p> <p><u>ELECTRICAL CHARACTERISTICS</u> -NOMINAL CURRENT: 7.5A -CONTACT RESISTANCE: <= 7.3 m ohms -CONTACT/CONTACT : >=1000 V -CONTACT/GROUND : >=1200 V -INSULATION RESISTANCE: >=5000 MOhms</p> <p><u>ENVIRONMENTAL CHARACTERISTICS</u> - CLIMATIC CATEGORY: 55/155/56 TEMPERATURE RANGE -55°C TO +155°C DAMP HEAT STEADY STATE 56 DAYS SALT SPRAY 48 HOURS</p>			<p>Plating ←</p> <p>Blank : solder bucket 500 matings/unmatings 043 : solder bucket 500 matings/unmatings for harsh environment</p>				<p>C</p>																																																																																										
<p>C</p> <p><u>MECHANICAL CHARACTERISTICS</u> - RETENTION AGAINST TORQUE: - Threaded insert: 0.7 N.m minimum - Female screw : 0.5 N.m minimum</p>							<p>D</p>																																																																																										
<p>D</p> <p>E</p> <p>F</p>				<p>25WAY for Example</p> 	<table border="1"> <tr> <td colspan="2">www.fciconnect.com</td> <td>surface</td> <td>-</td> <td>tolerance std</td> <td colspan="2">projection</td> <td colspan="2">mm</td> </tr> <tr> <td colspan="2"></td> <td>ISO 1302</td> <td>✓</td> <td>ISO 406</td> <td>ISO 1101</td> <td colspan="2">⊕</td> <td>← →</td> </tr> <tr> <td colspan="2"></td> <td colspan="7">TOLERANCES UNLESS OTHERWISE SPECIFIED</td> </tr> <tr> <td>Dr</td> <td>M PESSON</td> <td>2006/11/14</td> <td>ANGULAR</td> <td>0.X</td> <td>±0.3</td> <td>size</td> <td colspan="2">Scale</td> </tr> <tr> <td>A</td> <td>LS06-0174</td> <td>MPE</td> <td>2006/11/14</td> <td>LINEAR</td> <td>0.xx</td> <td>±0.1</td> <td colspan="2">A2 2:1</td> </tr> <tr> <td>B</td> <td>LS07-0273</td> <td>MPE</td> <td>2007/10/30</td> <td>0° ±2'</td> <td>0.xxx</td> <td>±0.05</td> <td>ECN</td> <td>LS07-0273</td> </tr> <tr> <td colspan="2"></td> <td colspan="2">Appr</td> <td colspan="2">Product family</td> <td colspan="3">Spec ref</td> </tr> <tr> <td colspan="2"></td> <td colspan="2">FCI</td> <td colspan="2">SUB MALE DM HE508 series</td> <td>dwg no</td> <td colspan="2">C01-8637-1741</td> </tr> <tr> <td colspan="2"></td> <td colspan="2"></td> <td colspan="2">with solder bucket</td> <td>Rev.</td> <td colspan="2">B</td> </tr> <tr> <td colspan="2"></td> <td colspan="2">catalog no</td> <td colspan="2">CUSTOMER</td> <td colspan="3">sheet 1 of 4</td> </tr> </table>	www.fciconnect.com		surface	-	tolerance std	projection		mm				ISO 1302	✓	ISO 406	ISO 1101	⊕		← →			TOLERANCES UNLESS OTHERWISE SPECIFIED							Dr	M PESSON	2006/11/14	ANGULAR	0.X	±0.3	size	Scale		A	LS06-0174	MPE	2006/11/14	LINEAR	0.xx	±0.1	A2 2:1		B	LS07-0273	MPE	2007/10/30	0° ±2'	0.xxx	±0.05	ECN	LS07-0273			Appr		Product family		Spec ref					FCI		SUB MALE DM HE508 series		dwg no	C01-8637-1741						with solder bucket		Rev.	B				catalog no		CUSTOMER		sheet 1 of 4				<p>E</p> <p>F</p>
www.fciconnect.com		surface	-	tolerance std	projection		mm																																																																																										
		ISO 1302	✓	ISO 406	ISO 1101	⊕		← →																																																																																									
		TOLERANCES UNLESS OTHERWISE SPECIFIED																																																																																															
Dr	M PESSON	2006/11/14	ANGULAR	0.X	±0.3	size	Scale																																																																																										
A	LS06-0174	MPE	2006/11/14	LINEAR	0.xx	±0.1	A2 2:1																																																																																										
B	LS07-0273	MPE	2007/10/30	0° ±2'	0.xxx	±0.05	ECN	LS07-0273																																																																																									
		Appr		Product family		Spec ref																																																																																											
		FCI		SUB MALE DM HE508 series		dwg no	C01-8637-1741																																																																																										
				with solder bucket		Rev.	B																																																																																										
		catalog no		CUSTOMER		sheet 1 of 4																																																																																											

Copyright FCI, FCI

DEMFO9P Amphenol ICC (FCI) CONN D-SUB PLUG 9POS SLDR CUP



FRONT ACCESSORY	Blank without	F floating mounting	L insert M3 O insert UNC 4.40	V female screw UNC 4.40
-----------------	----------------------	----------------------------	--	--------------------------------

shell size	Contact number
#	XX
E	09
A	15
B	25
C	37
D	50

PART NUMBER	FRONT ACCESSORY
D*MxxPN	without
D*MFxxPN	floating mounting
D*MLxxPN	insert M3
D*MOxxPN	insert UNC 4.40
D*MVxxPN	female screw UNC 4.40

PART NUMBER	FRONT ACCESSORY
D*MxxP043N	without
D*MFxxP043N	floating mounting
D*MLxxP043N	insert M3
D*MOxxP043N	insert UNC 4.40
D*MVxxP043N	female screw UNC 4.40

CROSS REFERENCES HE508 and FCI

HE508 P/N	FCI P/N	FRONT ACCESSORY
HE508NxxAP	D*MxxPN	without
HE501FxxAP	D*MFxxPN	floating mounting

Copyright FCI, FCJ

www.fciconnect.com		surface ISO 1302	tolerance std ISO 406 ISO 1101	projection mm
		TOLERANCES UNLESS OTHERWISE SPECIFIED		
Dr M PESSON	2006/11/14	ANGULAR	0.X ±0.3	size A2 Scale 2:1
Eng P LEGARE	2006/11/14	LINEAR	0.XX ±0.1	
Chr P LEGARE	2006/11/14	0° ±2'	0.XXX ±0.05	ECN LS07-0273
Appr P LEGARE	2006/11/14	Product family		Spec ref

SCALE: 4

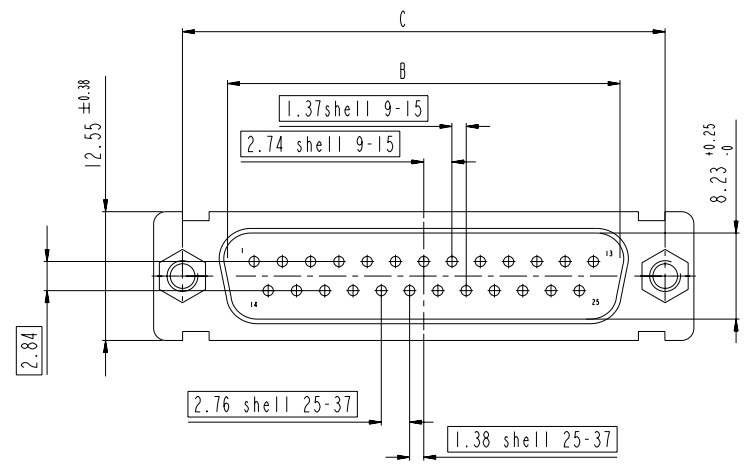
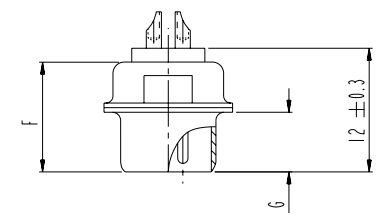
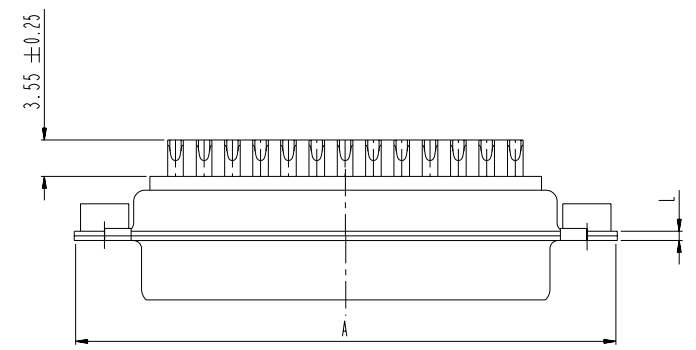
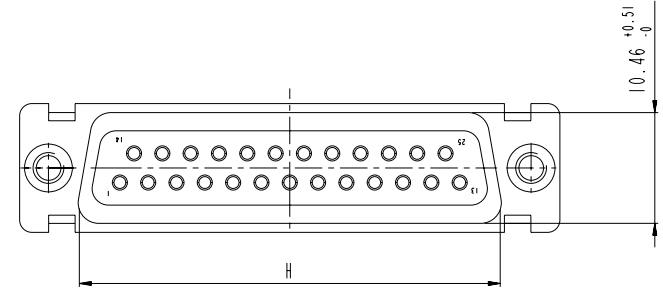
FCJ	SUB MALE DM HE508 series	dwg no	C01-8637-1741	Rev.	B
	with solder bucket	catalog no	CUSTOMER	sheet 2 of 4	

DEMFO9P Amphenol ICC (FCI) CONN D-SUB PLUG 9POS SLDR CUP

DIMENSIONS FOR SHELL E,A,B,C

Dimensions are in millimeters

Shell size	Number of contacts	A ^{+0.76} ₋₀	B ^{+0.25} ₋₀	C ±0.12	F ^{+0.57} ₋₀	G ^{+0.25} ₋₀	H ^{+0.51} ₋₀	L ^{+0.22} ₋₀
E	09	30.43	16.79	24.99	10.47	5.9 ^{+0.15} ₋₀	19.02	0.80
A	15	38.76	25.12	33.32	10.47	5.9 ^{+0.15} ₋₀	27.25	0.80
B	25	52.65	38.84	47.04	10.43	5.7 ^{+0.25} ₋₀	41.02	0.80
C	37	68.94	55.30	63.50	10.56	5.7 ^{+0.25} ₋₀	57.45	0.90



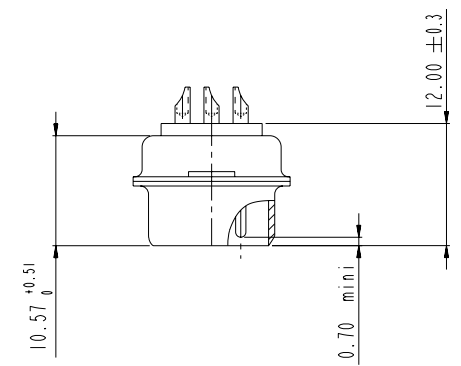
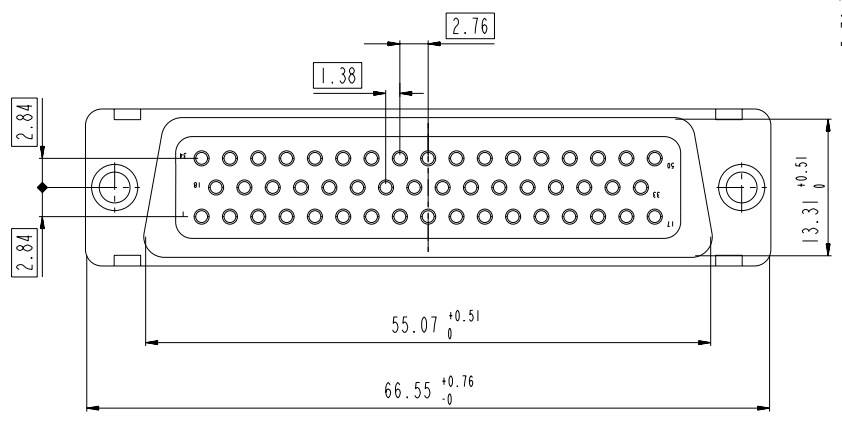
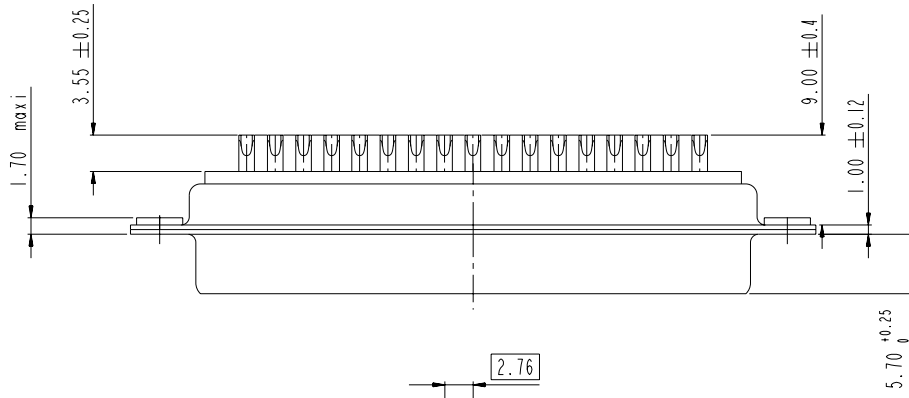
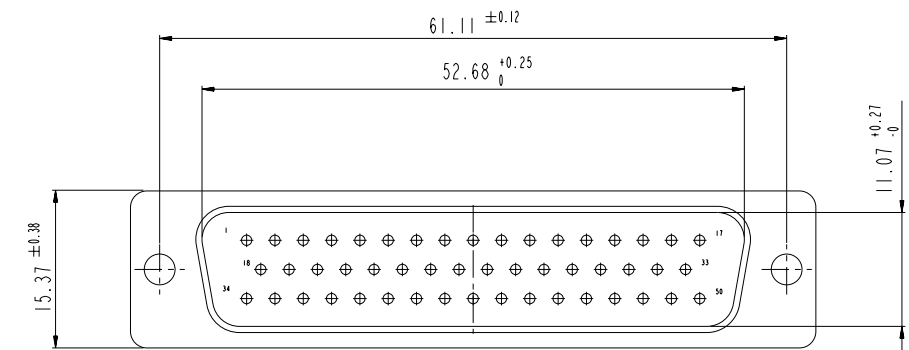
scale 3

www.fciconnect.com		surface ISO 1302	tolerance std ISO 406 ISO 1101	projection mm
		TOLERANCES UNLESS OTHERWISE SPECIFIED		
Dr	M PESSON	2006/11/14	ANGULAR	size A2
Eng	P LEGARE	2006/11/14	LINEAR	Scale 2:1
Chr	P LEGARE	2006/11/14	0° ±2'	ECN LS07-0273
Appr	P LEGARE	2006/11/14	Product family	Spec ref
FCI		SUB MALE DM HE508 series		Rev. B
		with solder bucket		ang no C01-8637-1741
		catalog no		CUSTOMER sheet 3 of 4

Copyright FCI.

DEM09P Amphenol ICC (FCI) CONN D-SUB PLUG 9POS SLDR CUP

DIMENSIONS FOR SHELL SIZE D (50 CONTACTS)



Copyright FCI, **FCI**

scale 3

www.fciconnect.com		surface ISO 1302	tolerance std ISO 406 ISO 1101	projection mm
		TOLERANCES UNLESS OTHERWISE SPECIFIED		
Dr	M PESSON	2006/11/14	ANGULAR	0.X ±0.3
Eng	P LEGARE	2006/11/14	LINEAR	0.XX ±0.1
Chr	P LEGARE	2006/11/14	0° ±2°	0.XXX ±0.05
Appr	P LEGARE	2006/11/14	Product family	- Spec ref
Title SUB MALE DM HE508 series with solder bucket		dwg no C01-8637-1741	Rev. B	
catalog no		CUSTOMER	sheet 4 of 4	

OUR CERTIFICATE

DiGi provide top-quality products and perfect service for customer worldwide through standardization, technological innovation and continuous improvement. DiGi through third-party certification, we stricly control the quality of products and services. Welcome your RFQ to

Email: Info@DiGi-Electronics.com



Tel: +00 852 30501935

RFQ Email: Info@DiGi-Electronics.com

DiGi is a global authorized distributor of electronic components.