

RJSNEJF8908 Datasheet



DiGi Electronics Part Number	RJSNEJF8908-DG
Manufacturer	Amphenol ICC (Commercial Products)
Manufacturer Product Number	RJSNEJF8908
Description	CONN MOD JACK 8P8C R/A SHLD
Detailed Description	Jack Modular Connector 8p8c (RJ45, Ethernet) 90° Angle (Right) Shielded

<https://www.DiGi-Electronics.com>

This model RJSNEJF8908 is available at DiGi Electronics.

DiGi Electronics offers a global database of semiconductor and electronic component datasheets.

We welcome your inquiries regarding pricing, lead time, or other product-related questions.

 [Request a Quote](#)

 [Datasheet Search](#)



Tel: +00 852-30501935

RFQ Email: Info@DiGi-Electronics.com

DiGi is a global authorized distributor of electronic components.

Purchase and inquiry

Manufacturer Product Number:

RJSNEJF8908

Series:

RJSNE

Connector Type:

Jack

Number of Ports:

8

Mounting Type:

Through Hole

Termination:

Solder

Ratings:

-

LED Color:

Green

Tab Direction:

Up and Down

Contact Finish:

Gold

Housing Material:

Thermoplastic

Base Product Number:

RJSNEJF8

Manufacturer:

Amphenol ICC (Commercial Products)

Product Status:

Obsolete

Number of Positions/Contacts:

8p8c (RJ45, Ethernet)

Number of Rows:

2

Orientation:

90° Angle (Right)

Shielding:

Shielded

Features:

Board Lock

Ingress Protection:

-

Contact Material:

Phosphor Bronze

Contact Finish Thickness:

30.0µin (0.76µm)

Operating Temperature:

-40°C ~ 85°C

Environmental & Export classification

RoHS Status:

RoHS Compliant

ECCN:

EAR99

Moisture Sensitivity Level (MSL):

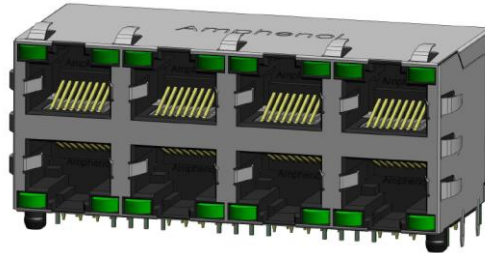
1 (Unlimited)

HTSUS:

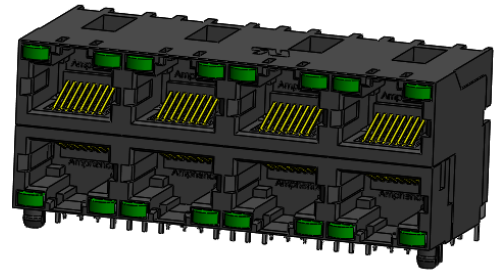
8536.69.4040

About Amphenol Commercial Products

Amphenol's commercial connector products are used in a variety of end user applications including networking, telecom, server & computer, storage & HDD, consumer electronics and entertainment, professional audio & Industrial & Military/Aerospace.



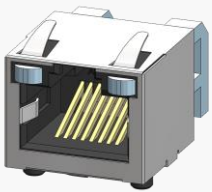
P/N RJSNE-5385-08 SHOWN



R/N RJSNE-5085-08 SHOWN

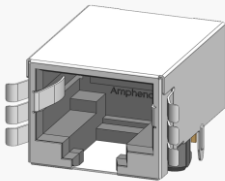
Related Products

RJSSE



P/N RJSSE-5081 SHOWN
SINGLE PORT, 8 POSITION,

RJULE



P/N RJULE-4X182-01 SHOWN SINGLE
PORT REGULAR MOUNT, STANDARD
SHIELD WITH SMT

OVERVIEW

This product specification defines the general use and performance parameters for Amphenol's RJSNE series of modular jacks.

Availability: 2X4 Ports available with a wide variety of LED and shielding options

USAGE

The RJSNE series of modular jacks supports Ethernet Protocols. Shielding available for increased EMI performance and LEDs for Link Activity and Network Speed verification.

APPLICATIONS

Intended for use in applications such as:

Data

- Storage
- Servers
- Routers
- Switches
- Hubs

Consumer Goods

- Security Systems
- Set Top Boxes
- Video Game Systems
- PCs, Laptops
- Copiers, Printers

Industrial and Instrumentation

- Uninterruptible Power Supply (UPS)
- ATMs
- Vending Machines
- POS Terminals
- Industrial IoT Platforms

Networking & Telecom

- 5G Wireless
- Telephones
- Modems
- Fax Machines

Medical

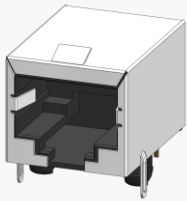
- Analysis Equipment
- Mass Spectrometers

About Amphenol Commercial Products

Amphenol's commercial connector products are used in a variety of end user applications including networking, telecom, server & computer, storage & HDD, consumer electronics and entertainment, professional audio & Industrial & Military/Aerospace.

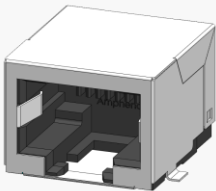
Related Products

FRJAE



P/N FRJAE-418 SHOWN SINGLE PORT, 8 POSITION, WITH FERRITE FILTER AND SHIELD (FRONT TABS)

RJLSE



P/N RJLSE-41181-01 SHOWN SINGLE PORT REGULAR MOUNT, STANDARD SHIELD WITH SMT

ELECTRICAL CHARACTERISTICS

Contact Resistance	20 mΩ maximum
Insulation Resistance	500 MΩ minimum at 500V DC for 2 minutes maximum
Current Rating	1.5 Amps per contact
Voltage Rating	125 Volts AC
DWV	1000 VAC, 60 HZ. 1 min
LED forward DC Current	20 mA typical
LED forward Voltage	1.9 Volts max. @ 2mA (for single colours) 2.6 Volts max. @ 20mA (for Bi-colours)
LED reverse Voltage	5 Volts minimum
LED Light Intensity	0.4 to 1.5 mcd @ 2mA (for single colours) 0.5 mcd minimum @ 2mA (for Bi-colours) Yellow: 587 ± 7nm measured @20mA Green: 565 ± 6nm measured @20mA Red: 625 ± 5nm measured @ 20mA
LED wavelength	

Supports PoE, PoE+, and PoE++ per IEEE PoE standards
IP20 rated per IEC 60529

MECHANICAL CHARACTERISTICS

Mating connector insertion force	5.0 lbs maximum
Mating connector pull retention force	20.0 lbs minimum
Durability	750 mating and unmating cycles for 50μ" gold plating
Recommended soldering temperature	Wave soldering peaked at 260°C for 5 seconds maximum
Operating Temperature	-40°C to +70°C

UL File #: E135615

MATERIAL REQUIREMENTS

RJSNE connectors are RoHS compliant.

Unless otherwise specified, the materials for each component shall be:

Insulator	Engineering thermoplastic, flammability rating UL 94V-0
Contacts	-Phosphor Bronze hard temper with gold thickness options (6μ", 15μ" 30μ", 50μ") over 50μ" minimum Nickel on contact mating area -100μ" minimum matte Tin plating on soldering tail
Shield	Copper alloy, Nickel plated with Tin dipped tail, or Stainless Steel with Tin dipped tail
LED	Pure Tin plating on LED tail

Amphenol Canada Corp.
605 Milner Avenue
Toronto, Ontario, Canada M1B 5X6

www.amphenolcanada.com (www.amphenol-icc.com)
(416) 291-4401
sales@amphenolcanada.com

Copyright © Amphenol Corporation 2018 · All rights reserved

Page 2 of 3

Amphenol

About Amphenol Commercial Products

Amphenol's commercial connector products are used in a variety of end user applications including networking, telecom, server & computer, storage & HDD, consumer electronics and entertainment, professional audio & Industrial & Military/Aerospace.

AVAILABLE DOCUMENTS

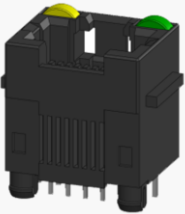
Below is a list of the most popular standard sales drawings:

Contact our website, sales, or an authorized Amphenol representation for additional drawings.

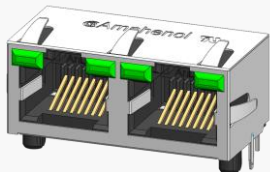
RJSNE-5F81-08	Two x Four ports, stackable, with shield, with LEDs
RJSNE-X38X-A8X	Two x Four ports, shield without top and side tabs, with LEDs
RJSNE-X38X-08	Two x Four ports, stackable, with shield, with LEDs
RJSNE-XF8X-A8X	Two x Four ports, stackable, shielded without tabs, with LEDs
RJSNE-XF80-08	Two x Four ports, shield without top and side tabs, with LEDs

Related Products

RJHSE



P/N RJHSE-3081 SHOWN SINGLE PORT VERTICAL MOUNT, NO SHIELD, WITH LEDs



P/N RJHSE-5385-02 SHOWN TWO PORT REGULAR SOUNT WITH SHIELD AND LEDs

Amphenol Canada Corp.
605 Milner Avenue
Toronto, Ontario, Canada M1B 5X6

www.amphenolcanada.com (www.amphenol-icc.com)
(416) 291-4401
sales@amphenolcanada.com

Copyright © Amphenol Corporation 2018 · All rights reserved

Page 3 of 3

Amphenol

OUR CERTIFICATE

DiGi provide top-quality products and perfect service for customer worldwide through standardization, technological innovation and continuous improvement. DiGi through third-party certification, we stricly control the quality of products and services. Welcome your RFQ to

Email: Info@DiGi-Electronics.com



Tel: +00 852-30501935

RFQ Email: Info@DiGi-Electronics.com

DiGi is a global authorized distributor of electronic components.