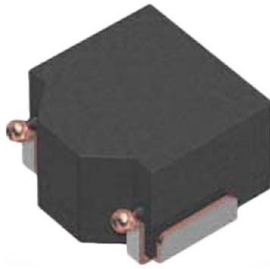


SPM5020T-3R3M-CA02 Datasheet

www.digi-electronics.com



<https://www.DiGi-Electronics.com>

DiGi Electronics Part Number	SPM5020T-3R3M-CA02-DG
Manufacturer	TDK Corporation
Manufacturer Product Number	SPM5020T-3R3M-CA02
Description	FIXED IND 3.3UH 3.9A 0.061OHM SM
Detailed Description	3.3 μ H Shielded Drum Core, Wirewound Inductor 3.9 A 61mOhm Max Nonstandard



Tel: +00 852-30501935

RFQ Email: Info@DiGi-Electronics.com

DiGi is a global authorized distributor of electronic components.

Purchase and inquiry

Manufacturer Product Number:

SPM5020T-3R3M-CA02

Series:

SPM-CA02

Type:

Drum Core, Wirewound

Inductance:

3.3 μ H

Current Rating (Amps):

3.9 A

Shielding:

Shielded

Q @ Freq:

-

Ratings:

-

Inductance Frequency - Test:

100 kHz

Mounting Type:

Surface Mount

Supplier Device Package:

-

Height - Seated (Max):

0.079" (2.00mm)

Manufacturer:

TDK Corporation

Product Status:

Active

Material - Core:

Metal

Tolerance:

\pm 20%

Current - Saturation (Isat):

6.5A

DC Resistance (DCR):

61mOhm Max

Frequency - Self Resonant:

-

Operating Temperature:

-40°C ~ 105°C

Features:

-

Package / Case:

Nonstandard

Size / Dimension:

0.213" L x 0.201" W (5.40mm x 5.10mm)

Base Product Number:

SPM5020T

Environmental & Export classification

RoHS Status:

ROHS3 Compliant

REACH Status:

REACH Unaffected

HTSUS:

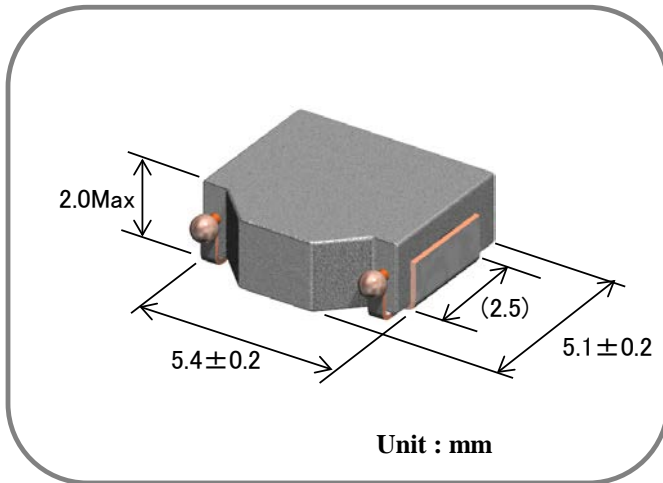
8504.50.8000

Moisture Sensitivity Level (MSL):

1 (Unlimited)

ECCN:

EAR99

Component Image & DimensionFeatures

- Small Footprint and Low Profile Design :
Footprint : 5.4 x 5.1 mm Typ.
Height : 2.0mm Max.
- High Power Handling Capability :
Small Copper Loss
Using Large Saturation Induction of Fe- based metals
- Flat inductance performance over temperature based on the high curie temperature of the iron powder core material.
- Automatic Mounting in Tape&Reel Package.

Applications

In-vehicle infotainment only

Electrical Specification (Provisional value)

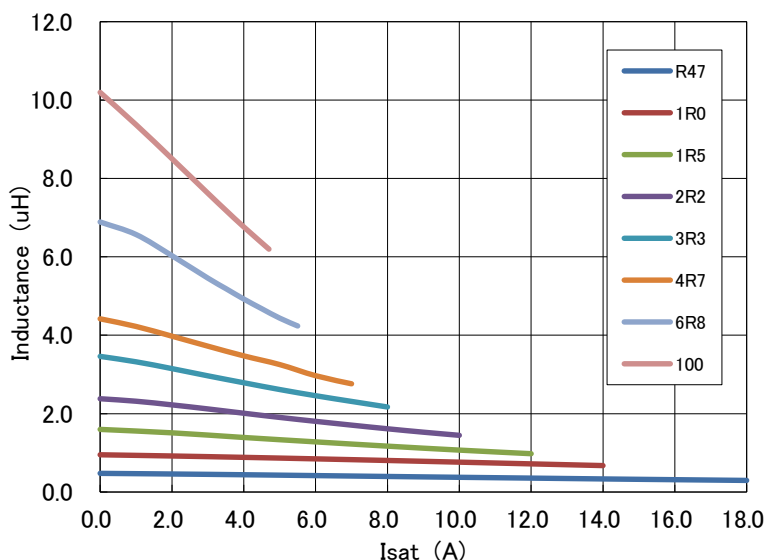
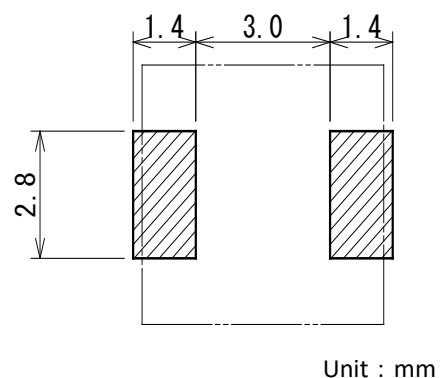
TDK Identification	Lo / Inductance		Test Freq. (kHz)	DC Resistance		Rated DC Current	
	at 0A (uH)	Tol. (%)		Max. (mΩ)	Typ. (mΩ)	Isat (A) Typ.	Itemp (A) Typ.
SPM5020T- R47M-CA02	0.47	+/-20%	100	11.5max	10.4	14.0	8.6
SPM5020T- 1R0M-CA02	1.00	+/-20%	100	17.2max	15.6	9.5	6.8
SPM5020T- 1R5M-CA02	1.50	+/-20%	100	24.8max	22.5	9.0	5.9
SPM5020T- 2R2M-CA02	2.20	+/-20%	100	40.7max	37.0	7.0	4.6
SPM5020T- 3R3M-CA02	3.30	+/-20%	100	61.0max	53.0	6.5	3.9
SPM5020T- 4R7M-CA02	4.70	+/-20%	100	67.7max	58.8	5.3	3.7
SPM5020T- 6R8M-CA02	6.80	+/-20%	100	118.5max	103.0	4.2	2.8
SPM5020T- 100M-CA02	10.00	+/-20%	100	174.8max	152.0	3.4	2.3

Note. Isat : Based on the inductance change.(drop -30% Typ. from Lo)

Itemp : Based on the self temperature rise. (+40 °C Typ.)

Operating Temperature Range: -40 °C ~ +105 °C (including self temperature rise)

Caution: Please contact our sales person when you consider organic solvent or aqueous cleaning.

Inductance vs.DC SuperpositionRecommended pad layout

OUR CERTIFICATE

DiGi provide top-quality products and perfect service for customer worldwide through standardization, technological innovation and continuous improvement. DiGi through third-party certification, we stricly control the quality of products and services. Welcome your RFQ to

Email: Info@DiGi-Electronics.com



Tel: +00 852-30501935

RFQ Email: Info@DiGi-Electronics.com

DiGi is a global authorized distributor of electronic components.