

VLS252015T-6R8MR73 Datasheet

www.digi-electronics.com



<https://www.DiGi-Electronics.com>

DiGi Electronics Part Number	VLS252015T-6R8MR73-DG
Manufacturer	TDK Corporation
Manufacturer Product Number	VLS252015T-6R8MR73
Description	FIXED IND 6.8UH 730MA 480MOHM SM
Detailed Description	6.8 μ H Shielded Wirewound Inductor 730 mA 480m Ohm Max 1008 (2520 Metric)



Tel: +00 852-30501935

RFQ Email: Info@DiGi-Electronics.com

DiGi is a global authorized distributor of electronic components.

Purchase and inquiry

Manufacturer Product Number:

VLS252015T-6R8MR73

Series:

VLS

Type:

Wirewound

Inductance:

6.8 μ H

Current Rating (Amps):

730 mA

Shielding:

Shielded

Q @ Freq:

-

Ratings:

-

Inductance Frequency - Test:

1 MHz

Package / Case:

1008 (2520 Metric)

Size / Dimension:

0.098" L x 0.079" W (2.50mm x 2.00mm)

Manufacturer:

TDK Corporation

Product Status:

Obsolete

Material - Core:

-

Tolerance:

\pm 20%

Current - Saturation (Isat):

1A

DC Resistance (DCR):

480mOhm Max

Frequency - Self Resonant:

-

Operating Temperature:

-40°C ~ 105°C

Mounting Type:

Surface Mount

Supplier Device Package:

1008 (2520 Metric)

Height - Seated (Max):

0.039" (1.00mm)

Environmental & Export classification

RoHS Status:

ROHS3 Compliant

ECCN:

EAR99

Moisture Sensitivity Level (MSL):

1 (Unlimited)

HTSUS:

8504.50.4000

SMD Inductors(Coils) For Power Line(Wound, Magnetic Shielded)

Conformity to RoHS Directive

VLS Series VLS252015

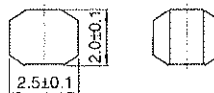
FEATURES

- Miniature size
Mount area: 2.5×2mm
Height: 1.5mm max.
- Generic use for portable DC to DC converter line.
- High magnetic shield construction should actualize high resolution for EMC protection.
- Available for automatic mounting in tape and reel package.
- The products do not contain lead and support lead-free soldering.

APPLICATIONS

DVCs, DSCs, PDAs, LCD displays, cellular phones, HDDs, etc.

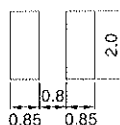
SHAPES AND DIMENSIONS



Dimensions in mm



RECOMMENDED PC BOARD PATTERN



Dimensions in mm

ELECTRICAL CHARACTERISTICS

Part No.	Inductance (μH)	Inductance tolerance (%)	Test frequency (MHz)	DC resistance (Ω)		Rated current(A)* Based on inductance change		Based on temperature rise typ.
				max.	typ.	max.	typ.	
VLS252015T-1R0N1R7	1	±30	1	0.082	0.068	2.3	2.62	1.7
VLS252015T-1R5N1R4	1.5	±30	1	0.12	0.1	1.9	2.18	1.4
VLS252015T-2R2M1R2	2.2	±20	1	0.16	0.133	1.7	1.9	1.2
VLS252015T-3R3M1R0	3.3	±20	1	0.218	0.182	1.4	1.57	1
VLS252015T-4R7MR89	4.7	±20	1	0.318	0.265	1.2	1.35	0.89
VLS252015T-6R8MR73	6.8	±20	1	0.48	0.4	1	1.13	0.73
VLS252015T-100MR66	10	±20	1	0.588	0.49	0.82	0.93	0.66

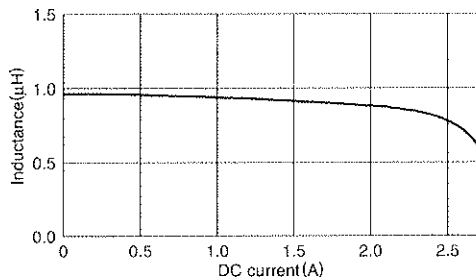
* Rated current: Value obtained when current flows and the temperature has risen to 40°C or when DC current flows and the nominal value of inductance has fallen by 30%, whichever is smaller.

- Operating temperature range: -40 to +105°C (Including self-temperature rise)

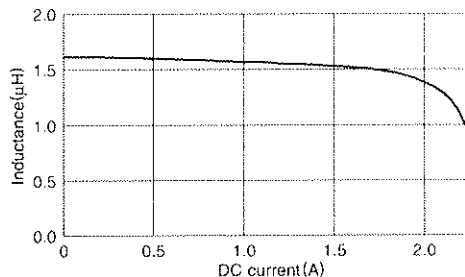
TYPICAL ELECTRICAL CHARACTERISTICS

INDUCTANCE vs. DC SUPERPOSITION CHARACTERISTICS

VLS252015T-1R0N1R7



VLS252015T-1R5N1R4

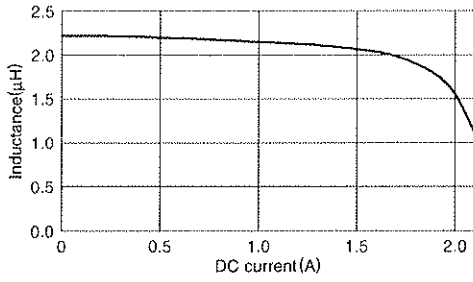


- Conformity to RoHS Directive: This means that, in conformity with EU Directive 2002/95/EC, lead, cadmium, mercury, hexavalent chromium, and specific bromine-based flame retardants, PBB and PBDE, have not been used, except for exempted applications.

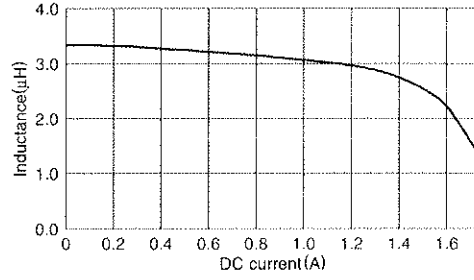
- All specifications are subject to change without notice.



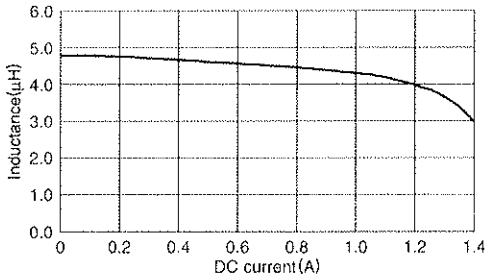
TYPICAL ELECTRICAL CHARACTERISTICS
INDUCTANCE vs. DC SUPERPOSITION CHARACTERISTICS
VLS252015T-2R2M1R2



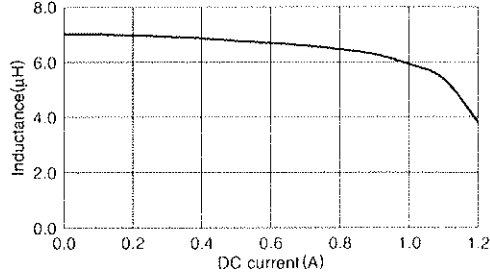
VLS252015T-3R3M1R0



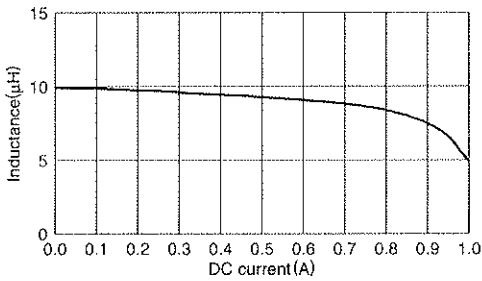
VLS252015T-4R7MR89



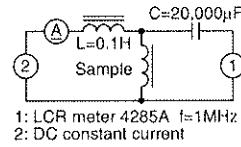
VLS252015T-6R8MR73



VLS252015T-100MR66



TEST CIRCUIT



• All specifications are subject to change without notice.

OUR CERTIFICATE

DiGi provide top-quality products and perfect service for customer worldwide through standardization, technological innovation and continuous improvement. DiGi through third-party certification, we strictly control the quality of products and services. Welcome your RFQ to

Email: Info@DiGi-Electronics.com



Tel: +00 852-30501935

RFQ Email: Info@DiGi-Electronics.com

DiGi is a global authorized distributor of electronic components.