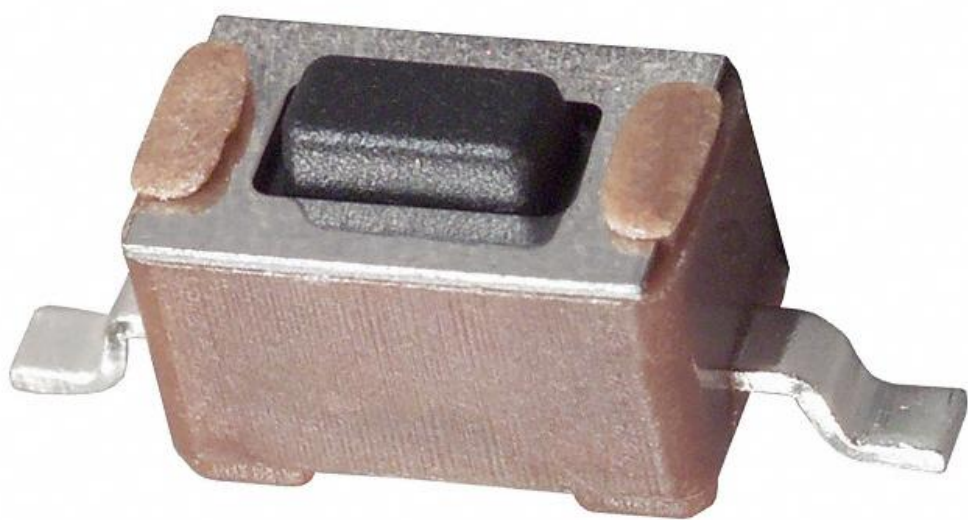


FSMSM Datasheet

www.digi-electronics.com



<https://www.DiGi-Electronics.com>

DiGi Electronics Part Number	FSMSM-DG
Manufacturer	TE Connectivity ALCOSWITCH Switches
Manufacturer Product Number	FSMSM
Description	SWITCH TACTILE SPST-NO 0.05A 24V
Detailed Description	Tactile Switch SPST-NO Top Actuated Surface Mount

This model FSMSM is available at DiGi Electronics.

DiGi Electronics offers a global database of semiconductor and electronic component datasheets.

We welcome your inquiries regarding pricing, lead time, or other product-related questions.

 [Request a Quote](#)

 [Datasheet Search](#)



Tel: +00 852-30501935

RFQ Email: Info@DiGi-Electronics.com

DiGi is a global authorized distributor of electronic components.

Purchase and inquiry

Manufacturer Product Number:

FSMSM

Series:

FSMSM

Circuit:

SPST-NO

Contact Rating @ Voltage:

0.05A @ 24VDC

Mounting Type:

Surface Mount

Actuator Length, Right Angle:

-

Termination Style:

Gull Wing

Illumination:

Non-Illuminated

Illumination Voltage (Nominal):

-

Ingress Protection:

-

Operating Temperature:

-35°C ~ 85°C

Switch Travel:

0.25mm

Base Product Number:

FSMS

Manufacturer:

TE Connectivity ALCOSWITCH Switches

Product Status:

Active

Switch Function:

Off-Mom

Actuator Type:

Standard

Actuator Height off PCB, Vertical:

4.57mm

Actuator Orientation:

Top Actuated

Outline:

6.00mm x 3.50mm

Illumination Type, Color:

-

Operating Force:

180gf

Features:

-

Actuator Material:

Polyphenylene Sulfide (PPS)

Mechanical Life:

20,000 Cycles

Environmental & Export classification

RoHS Status:

ROHS3 Compliant

REACH Status:

REACH Unaffected

HTSUS:

8536.50.9031

Moisture Sensitivity Level (MSL):

Not Applicable

ECCN:

EAR99

FSMSM ✓ ACTIVE

[Alcoswitch](#) | [Alcoswitch FSM](#)

TE Internal #: 1437566-3

50 mA Tactile Switch, Rectangular Actuator, Off (On), Brass, Silver

Contact Plating, Low Profile, 24 VDC, Alcoswitch FSM

[View on TE.com >](#)



Switches > Tactile Switches



Contact Current Rating: **50 mA**
 Actuator Style: **Rectangular Actuator**
 Operating Function: **Off (On)**
 Contact Base Material: **Brass**
 Switch Contact Plating Material: **Silver**

Features

Product Type Features

Leg Style	Gull Wing
Switch Connection Type	Printed Circuit Board
Illuminated	Without
Actuator Style	Rectangular Actuator

Configuration Features

Switch Feedback Type	Tactile
ESD Grounding Terminal	Without
Ganged	With
Operating Function	Off (On)
Support Bracket	Without
Configuration (Pole-Throw)	Single Pole - Single Throw
Number of Actuators	Single

Electrical Characteristics

Operating Voltage	24 VDC
-------------------	--------



Body Features

Case Material	Polyester
Actuator Profile	Extended
Case Color	Brown
Actuator Material	Polyamide
Cover Material	Stainless Steel
Actuator Force	180 g[6.34 oz]
Product Orientation	Vertical
Actuator Color	Black

Contact Features

Contact Current Rating	50 mA
Contact Base Material	Brass
Switch Contact Plating Material	Silver

Termination Features

Termination Method to PCB	Surface Mount
---------------------------	---------------

Housing Features

Low Profile	With
Process Sealed	No

Dimensions

Button Width	2.99 mm[.118 in] .18 in
Actuator Length	1.07 mm[.042 in]

Usage Conditions

Operating Temperature Range	-35 – 85 °C
-----------------------------	-------------

Packaging Features

Packaging Method	Loose Piece
------------------	-------------

Product Compliance

[For compliance documentation, visit the product page on TE.com>](#)

EU RoHS Directive 2011/65/EU	Compliant
EU ELV Directive 2000/53/EC	Compliant
China RoHS 2 Directive MIIT Order No 32, 2016	No Restricted Materials Above Threshold



EU REACH Regulation (EC) No. 1907/2006

Current ECHA Candidate List: JAN 2025 (247)

Candidate List Declared Against: JUNE 2024 (241)

Does not contain REACH SVHC

Halogen Content

Low Halogen - Br, Cl, F, I < 900 ppm per homogenous material. Also BFR/CFR/PVC Free

Solder Process Capability

Reflow solder capable to 260°C

Product Compliance Disclaimer

This information is provided based on reasonable inquiry of our suppliers and represents our current actual knowledge based on the information they provided. This information is subject to change. The part numbers that TE has identified as EU RoHS compliant have a maximum concentration of 0.1% by weight in homogenous materials for lead, hexavalent chromium, mercury, PBB, PBDE, DBP, BBP, DEHP, DIBP, and 0.01% for cadmium, or qualify for an exemption to these limits as defined in the Annexes of Directive 2011/65/EU (RoHS2). Finished electrical and electronic equipment products will be CE marked as required by Directive 2011/65/EU. Components may not be CE marked. Additionally, the part numbers that TE has identified as EU ELV compliant have a maximum concentration of 0.1% by weight in homogenous materials for lead, hexavalent chromium, and mercury, and 0.01% for cadmium, or qualify for an exemption to these limits as defined in the Annexes of Directive 2000/53/EC (ELV). Regarding the REACH Regulation, the information TE provides on SVHC in articles for this part number is based on the latest European Chemicals Agency (ECHA) 'Guidance on requirements for substances in articles' posted at this URL: <https://echa.europa.eu/guidance-documents/guidance-on-reach>

Compatible Parts



TE Part # 4-1437565-2
FSM4JSMATR=TACT SWITCH 6X6MIL



TE Part # 2-1825910-7
FSM14JH=6MM TACT SWITCH, HIGH TEMP



TE Part # 3-1437565-0
FSM2JSMATR=ON T/R



TE Part # 2-1977223-8
FSM14JSMAS=6MM TACT SWITCH, SMT 160gf

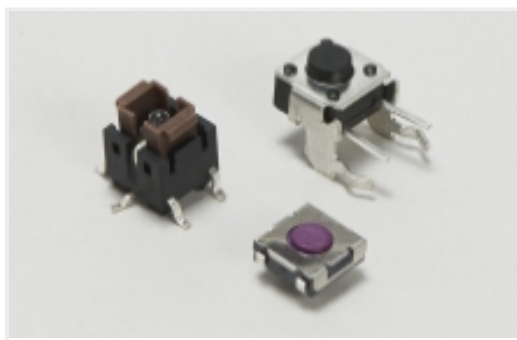


TE Part # 1825910-6
FSM4JH=6MM TACT SWITCH, HIGH TEMP

Also in the Series | [Alcoswitch FSM](#)

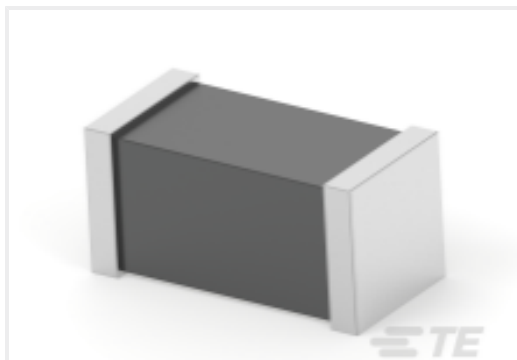


50 mA Tactile Switch, Rectangular Actuator, Off (On), Brass, Silver Contact Plating, Low Profile, 24 VDC, Alcoswitch FSM



Tactile Switches(51)

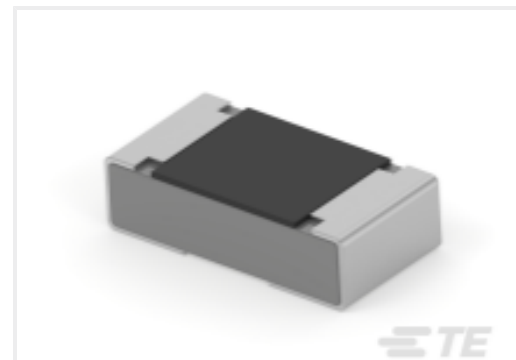
Customers Also Bought



TE Part #1-2176492-6
BMC 0402 430R 25% A Gen C



TE Part #2118909-4
PCB Ant, MHF4L, 115.8mm, Wi-Fi 6E Triple



TE Part #2-2176480-0
RA73F 1J 866R 0.1% 5K RL



TE Part #1-5103308-3
A/L LOW PRO HDR 24P VERT BLACK



TE Part #7-1879352-0
RR02 5% 240R AMMO



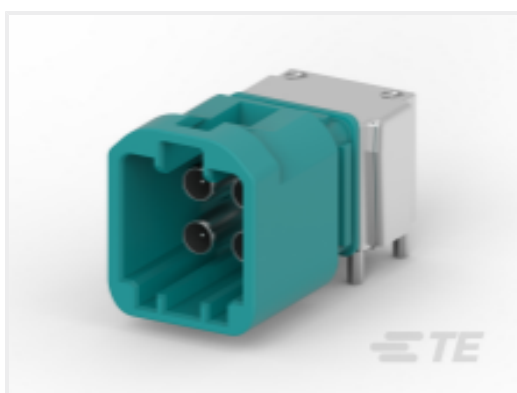
TE Part #6-1879352-3
RR02 5% 120R AMMO



TE Part #5-1624112-7
3650 0402 56nH 5% 2K RL



TE Part #8-1879352-1
RR02 5% 680R AMMO



TE Part #2304168-9
4P MATE-AX, HDR ASSY,90 DEG,COD Z



TE Part #TAB62146501-040
M12B2-MS-PUR TORSION-4.0M

Documents

Product Drawings

[FSMSM=3.5X6 SMT TACT](#)

English

CAD Files

[3D PDF](#)

[3D](#)

Customer View Model

[ENG_CVM_CVM_1437566-3_C_c-1437566-3-c.2d_dxf.zip](#)



50 mA Tactile Switch, Rectangular Actuator, Off (On), Brass, Silver Contact Plating, Low Profile, 24 VDC, Alcoswitch FSM

English

Customer View Model

[ENG_CVM_CVM_1437566-3_C_c-1437566-3-c.3d_igs.zip](#)

English

Customer View Model

[ENG_CVM_CVM_1437566-3_C_c-1437566-3-c.3d_stp.zip](#)

English

By downloading the CAD file I accept and agree to the [Terms and Conditions](#) of use.

Datasheets & Catalog Pages

[SWITCHES_CORE_PROGRAM_CATALOG](#)

English

[Products for Mobile Equipment](#)

English

OUR CERTIFICATE

DiGi provide top-quality products and perfect service for customer worldwide through standardization, technological innovation and continuous improvement. DiGi through third-party certification, we stricly control the quality of products and services. Welcome your RFQ to

Email: Info@DiGi-Electronics.com



Tel: +00 852-30501935

RFQ Email: Info@DiGi-Electronics.com

DiGi is a global authorized distributor of electronic components.