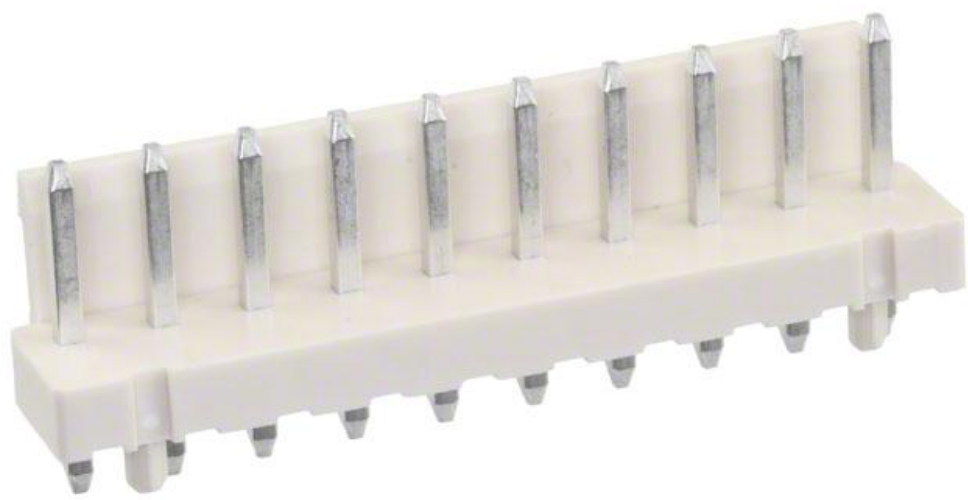


1-1744429-0 Datasheet

www.digi-electronics.com



<https://www.DiGi-Electronics.com>

DiGi Electronics Part Number	1-1744429-0-DG
Manufacturer	TE Connectivity AMP Connectors
Manufacturer Product Number	1-1744429-0
Description	CONN HEADER VERT 10POS 3.96MM
Detailed Description	Connector Header Through Hole 10 position 0.156" (3.96mm)

This model 1-1744429-0 is available at DiGi Electronics.

DiGi Electronics offers a global database of semiconductor and electronic component datasheets.

We welcome your inquiries regarding pricing, lead time, or other product-related questions.

 [Request a Quote](#)

 [Datasheet Search](#)



Tel: +00 852-30501935

RFQ Email: Info@DiGi-Electronics.com

DiGi is a global authorized distributor of electronic components.

Purchase and inquiry

Manufacturer Product Number:

1-1744429-0

Series:

Economy Power

Connector Type:

Header

Pitch - Mating:

0.156" (3.96mm)

Number of Rows:

1

Number of Positions Loaded:

All

Shrouding:

Shrouded - 1 Wall

Termination:

Solder

Contact Length - Mating:

0.303" (7.70mm)

Overall Contact Length:

0.575" (14.60mm)

Contact Shape:

Square

Contact Finish Thickness - Mating:

120.0µin (3.05µm)

Contact Material:

Brass

Features:

Board Guide, Glow Wire Compliant

Ingress Protection:

-

Insulation Color:

Natural

Voltage Rating:

250VAC

Contact Finish Thickness - Post:

120.0µin (3.05µm)

Base Product Number:

1744429

Manufacturer:

TE Connectivity AMP Connectors

Product Status:

Active

Contact Type:

Male Pin

Number of Positions:

10

Row Spacing - Mating:

-

Style:

Board to Cable/Wire

Mounting Type:

Through Hole

Fastening Type:

Locking Ramp

Contact Length - Post:

0.145" (3.68mm)

Insulation Height:

0.127" (3.22mm)

Contact Finish - Mating:

Tin

Contact Finish - Post:

Tin

Insulation Material:

Polyamide (PA), Nylon

Operating Temperature:

-25°C ~ 105°C

Material Flammability Rating:

UL94 V-0

Current Rating (Amps):

7.5A

Mated Stacking Heights:

-

Applications:

General Purpose, Industrial, Lighting

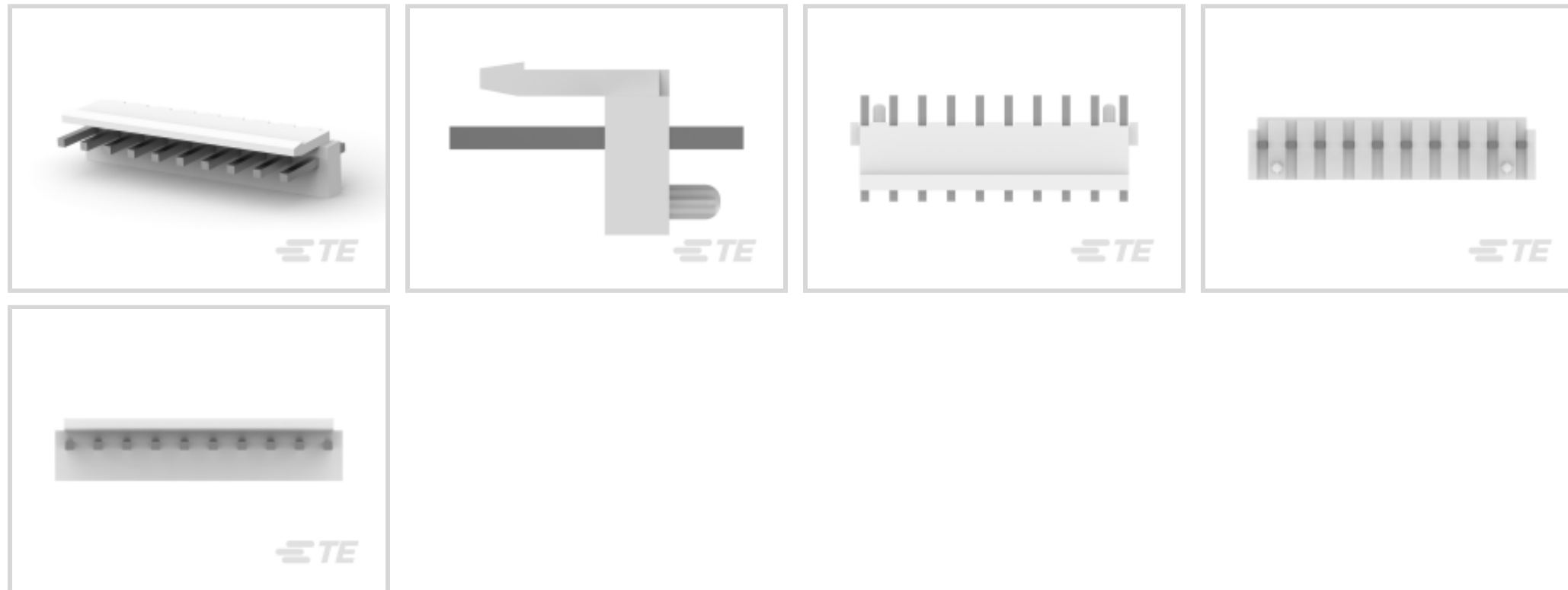
1-1744429-0 ✓ ACTIVE**Economy Power**

TE Internal #: 1-1744429-0

PCB Mount Header, Vertical, Wire-to-Board, 10 Position, 3.96 mm [.156 in] Centerline, Partially Shrouded, Tin (Sn), Economy Power

[View on TE.com >](#)

Connectors > PCB Connectors > PCB Headers & Receptacles

PCB Connector Type: **PCB Mount Header**PCB Mount Orientation: **Vertical**Connector System: **Wire-to-Board**Number of Positions: **10**Number of Rows: **1****Features****Product Type Features**

Connector Shape	Rectangular
PCB Connector Type	PCB Mount Header
Connector System	Wire-to-Board
Header Type	Partially Shrouded
Sealable	No
Connector & Contact Terminates To	Printed Circuit Board
Connector Product Type	Connector Assembly

Configuration Features

Number of Loaded Positions	10
Number of Power Positions	10
PCB Mount Orientation	Vertical
Number of Positions	10
Number of Rows	1

Electrical Characteristics



Operating Voltage	250 VDC
-------------------	---------

Body Features

Primary Product Color	Natural
-----------------------	---------

Contact Features

Contact Underplating Material	Nickel
-------------------------------	--------

Contact Underplating Material Thickness	1 µm[39.37 µin]
---	-----------------

Contact Mating Area Plating Material Thickness	3.04 µm[120 µin]
--	------------------

PCB Contact Termination Area Plating Material Thickness	3.04 µm[120 µin]
---	------------------

Contact Layout	Inline
----------------	--------

Contact Mating Area Length	7.7 mm[.303 in]
----------------------------	-----------------

Contact Base Material	Brass
-----------------------	-------

PCB Contact Termination Area Plating Material	Tin
---	-----

Contact Mating Area Plating Material	Tin (Sn)
--------------------------------------	----------

Contact Type	Tab
--------------	-----

Contact Current Rating (Max)	8 A
------------------------------	-----

Termination Features

Termination Post & Tail Length	3.69 mm[.145 in]
--------------------------------	------------------

Termination Method to PCB	Through Hole - Solder
---------------------------	-----------------------

Mechanical Attachment

Mating Retention Type	Locking Tab
-----------------------	-------------

Mating Retention	With
------------------	------

PCB Mount Alignment Type	Pegs
--------------------------	------

PCB Mount Retention	Without
---------------------	---------

PCB Mount Alignment	With
---------------------	------

Connector Mounting Type	Board Mount
-------------------------	-------------

Mating Alignment	Without
------------------	---------

Housing Features

Housing Material	Nylon
------------------	-------

Centerline (Pitch)	3.96 mm[.156 in]
--------------------	------------------

Dimensions

Connector Width	8.6 mm[.339 in]
-----------------	-----------------

PCB Thickness (Recommended)	1.6 mm[.063 in]
-----------------------------	-----------------



Connector Height	9.4 mm[.37 in]
------------------	----------------

Connector Length	39.6 mm[1.55 in]
------------------	------------------

Usage Conditions

Operating Temperature (Max)	105 °C[221 °F]
-----------------------------	----------------

Operating Temperature Range	-30 – 105 °C[-22 – 221 °F]
-----------------------------	----------------------------

Operation/Application

Circuit Application	Power
---------------------	-------

Industry Standards

Glow Wire Rating	GWT 750°C (Without Flame)
------------------	---------------------------

UL Flammability Rating	UL 94V-0
------------------------	----------

Packaging Features

Packaging Quantity	500
--------------------	-----

Packaging Method	Bag
------------------	-----

Product Compliance

[For compliance documentation, visit the product page on TE.com>](#)

EU RoHS Directive 2011/65/EU	Compliant
------------------------------	-----------

EU ELV Directive 2000/53/EC	Compliant
-----------------------------	-----------

China RoHS 2 Directive MIIT Order No 32, 2016	No Restricted Materials Above Threshold
---	---

EU REACH Regulation (EC) No. 1907/2006	Current ECHA Candidate List: JUNE 2024 (241) Candidate List Declared Against: JUNE 2024 (241) Does not contain REACH SVHC
--	---

Halogen Content	Not Low Halogen - contains Br or Cl > 900 ppm.
-----------------	--

Solder Process Capability	Wave solder capable to 265°C
---------------------------	------------------------------

Product Compliance Disclaimer

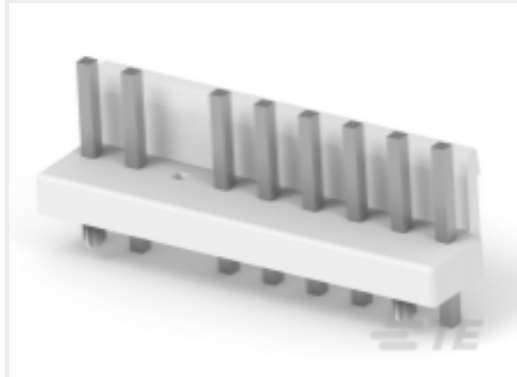
This information is provided based on reasonable inquiry of our suppliers and represents our current actual knowledge based on the information they provided. This information is subject to change. The part numbers that TE has identified as EU RoHS compliant have a maximum concentration of 0.1% by weight in homogenous materials for lead, hexavalent chromium, mercury, PBB, PBDE, DBP, BBP, DEHP, DIBP, and 0.01% for cadmium, or qualify for an exemption to these limits as defined in the Annexes of Directive 2011/65/EU (RoHS2). Finished electrical and electronic equipment products will be CE marked as required by Directive 2011/65/EU. Components may not be CE marked. Additionally, the part numbers that TE has identified as EU ELV compliant have a maximum concentration of 0.1% by weight in homogenous materials for lead, hexavalent chromium, and mercury, and 0.01% for cadmium, or qualify for an exemption to these limits as defined in the Annexes of Directive 2000/53/EC (ELV). Regarding the REACH Regulation, the information TE provides



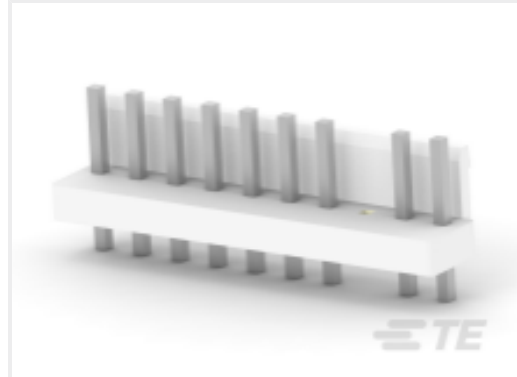
PCB Mount Header, Vertical, Wire-to-Board, 10 Position, 3.96 mm [.156 in] Centerline, Partially Shrouded, Tin (Sn), Economy Power

on SVHC in articles for this part number is based on the latest European Chemicals Agency (ECHA) 'Guidance on requirements for substances in articles' posted at this URL: <https://echa.europa.eu/guidance-documents/guidance-on-reach>

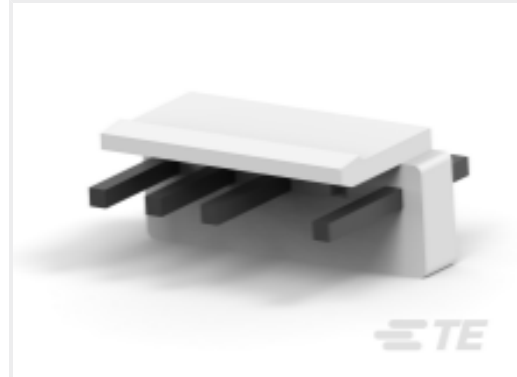
Compatible Parts



TE Part # 1-1744429-9
3.96 EP HDR ASSY 9P W/PEGS, GW,
NO PIN 3



TE Part # 1-1744524-0
EP 10P HEADER ASY NO 8 PIN



TE Part # 3-1744524-5
EP 05P HEADER ASY NO #4 PIN



TE Part # 4-1744524-5
EP 05P HEADER ASY NO #3 PIN



TE Part # 1-1744416-0
10 POS EP II HSG, GLOW WIRE



TE Part # 1-1744498-0
10P EP-II HOUSING, BLACK



TE Part # 1744110-2
EP HDR ASSY 10P, NO #2 PIN



TE Part # 1-1744524-2
EP 12P HEADER ASY NO 2,6 PINS



TE Part # 1-1744524-1
EP 11P HEADER ASY NO 6,10 PINS



TE Part # 1-1744429-6
3.96 EP HDR ASSY 6P W/PEGS, GW,
NO PIN 3



TE Part # 1-1744544-0
EP II TPA 10P, BLACK

Also in the Series | Economy Power



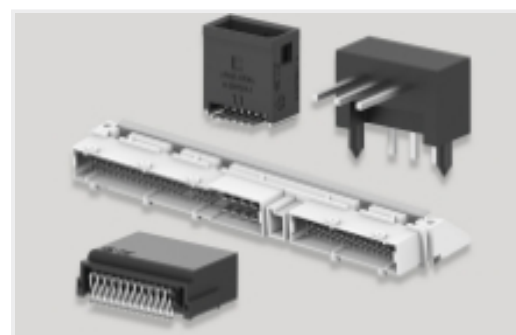
Connector Contacts(15)



Connector Hardware(2)



Insertion & Extraction Tools(1)



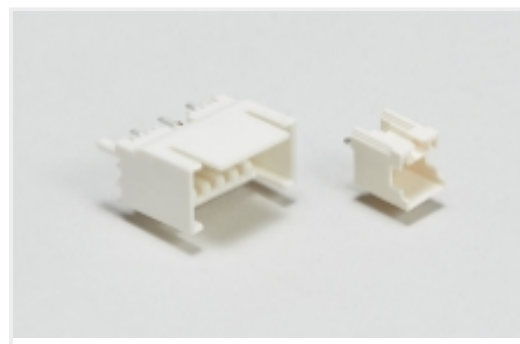
PCB Headers & Receptacles(402)



Power Contacts(9)



Rectangular Power Connectors(460)



Wire-to-Board Headers & Receptacles (402)

Customers Also Bought



TE Part #4-1825059-2
ADF08STTR04=DIP S,FLUSH,SMT-GW



TE Part #360042-1
250 FASTON HSG.,TAB,NATURAL



TE Part #6-1415035-1
RT78726



TE Part #66565-7
III+ SKT,24-20,TIN,LP




TE Part #1744429-2
3.96 EP HDR ASSY 2P W/PEGS, GW



TE Part #360041-1
187 FASTON HSG.,TAB,1 POS, NATRUAL




TE Part #6-1393211-0
T92P7A22-24



TE Part #282830-6
TERMI-BLOK PLUG 90&180DEG 6P.5



TE Part #1-770968-0
04P MINI UMNL R/A HDR ASSY SN



TE Part #3-1423712-5
W28-X1095-5=CKTBKR,THERM,ROCK, QC.250,FUS

Documents

Product Drawings

3.96 EP HDR ASSY 10P W/PEGS, GW

English

CAD Files

3D PDF

3D

Customer View Model

ENG_CVM_CVM_1-1744429-0_E.2d_dxf.zip



PCB Mount Header, Vertical, Wire-to-Board, 10 Position, 3.96 mm [.156 in] Centerline, Partially Shrouded, Tin (Sn), Economy Power

English

Customer View Model

[ENG_CVM_CVM_1-1744429-0_E.3d_igs.zip](#)

English

Customer View Model

[ENG_CVM_CVM_1-1744429-0_E.3d_stp.zip](#)

English

By downloading the CAD file I accept and agree to the [Terms and Conditions](#) of use.

Datasheets & Catalog Pages

[Economy Power II \(EP II\) Glow Wire test compliant connectors](#)

English

[1-1773885-9 Economy Power Connectors](#)

English

Product Specifications

[Application Specification](#)

Japanese

OUR CERTIFICATE

DiGi provide top-quality products and perfect service for customer worldwide through standardization, technological innovation and continuous improvement. DiGi through third-party certification, we stricly control the quality of products and services. Welcome your RFQ to

Email: Info@DiGi-Electronics.com



Tel: +00 852-30501935

RFQ Email: Info@DiGi-Electronics.com

DiGi is a global authorized distributor of electronic components.