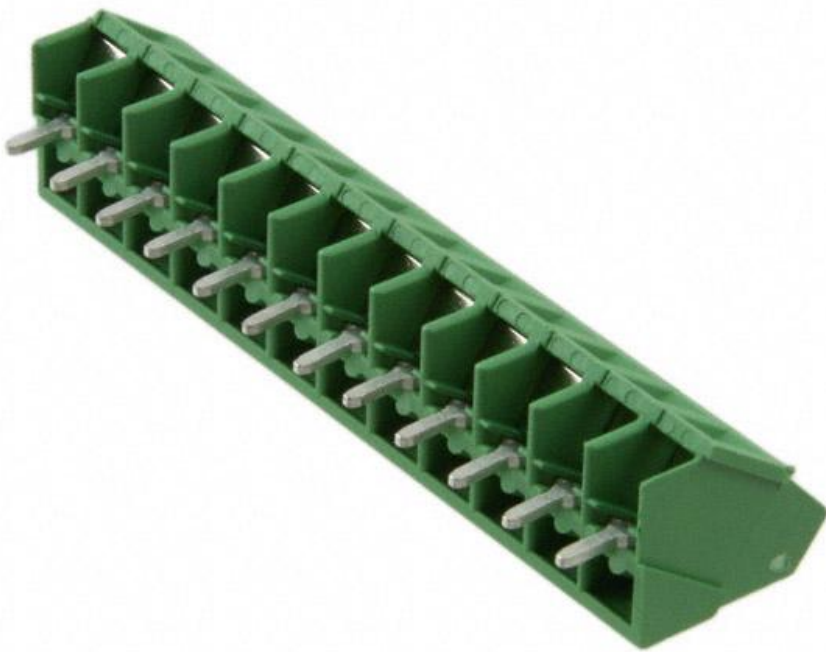


# 1-282847-2 Datasheet

[www.digi-electronics.com](http://www.digi-electronics.com)



<https://www.DiGi-Electronics.com>

|                              |   |
|------------------------------|---|
| DiGi Electronics Part Number | 1-282847-2-DG   |
| Manufacturer                 | <a href="#">TE Connectivity AMP Connectors</a>  |
| Manufacturer Product Number  | 1-282847-2  |
| Description                  | TERM BLK 12POS 35DEG 5.08MM PCB   |
| Detailed Description         | 12 Position Wire to Board Terminal Block 35° (145°) Angle with Board 0.200" (5.08mm) Through Hole |

This model 1-282847-2 is available at DiGi Electronics.

DiGi Electronics offers a global database of semiconductor and electronic component datasheets.

We welcome your inquiries regarding pricing, lead time, or other product-related questions.

 [Request a Quote](#)

 [Datasheet Search](#)



Tel: +00 852-30501935

RFQ Email: [Info@DiGi-Electronics.com](mailto:Info@DiGi-Electronics.com)

DiGi is a global authorized distributor of electronic components.

## Purchase and inquiry

Manufacturer Product Number:

1-282847-2

Series:

Buchanan

Number of Levels:

1

Pitch:

0.200" (5.08mm)

Current:

17.5 A

Wire Gauge:

12-30 AWG

Wire Termination:

Screw - Rising Cage Clamp

Color:

Green

Housing Material:

Polyamide (PA66), Nylon 6/6

Clamp Material - Plating:

Brass - Nickel Plated

Torque - Screw:

0.79 Nm (7.0 Lb-In)

Base Product Number:

282847

Manufacturer:

TE Connectivity AMP Connectors

Product Status:

Active

Positions Per Level:

12

Mating Orientation:

35° (145°) Angle with Board

Voltage:

300 V

Mounting Type:

Through Hole

Features:

Interlocking (Side)

Operating Temperature:

-

Contact Material - Plating:

Brass - Tin Plated

Screw Material - Plating:

Brass - Nickel Plated

Screw Thread:

M3

## Environmental & Export classification

RoHS Status:

ROHS3 Compliant

REACH Status:

REACH Affected

HTSUS:

8536.90.4000

Moisture Sensitivity Level (MSL):

1 (Unlimited)

ECCN:

EAR99

1-282847-2 ✓ ACTIVE

Buchanan

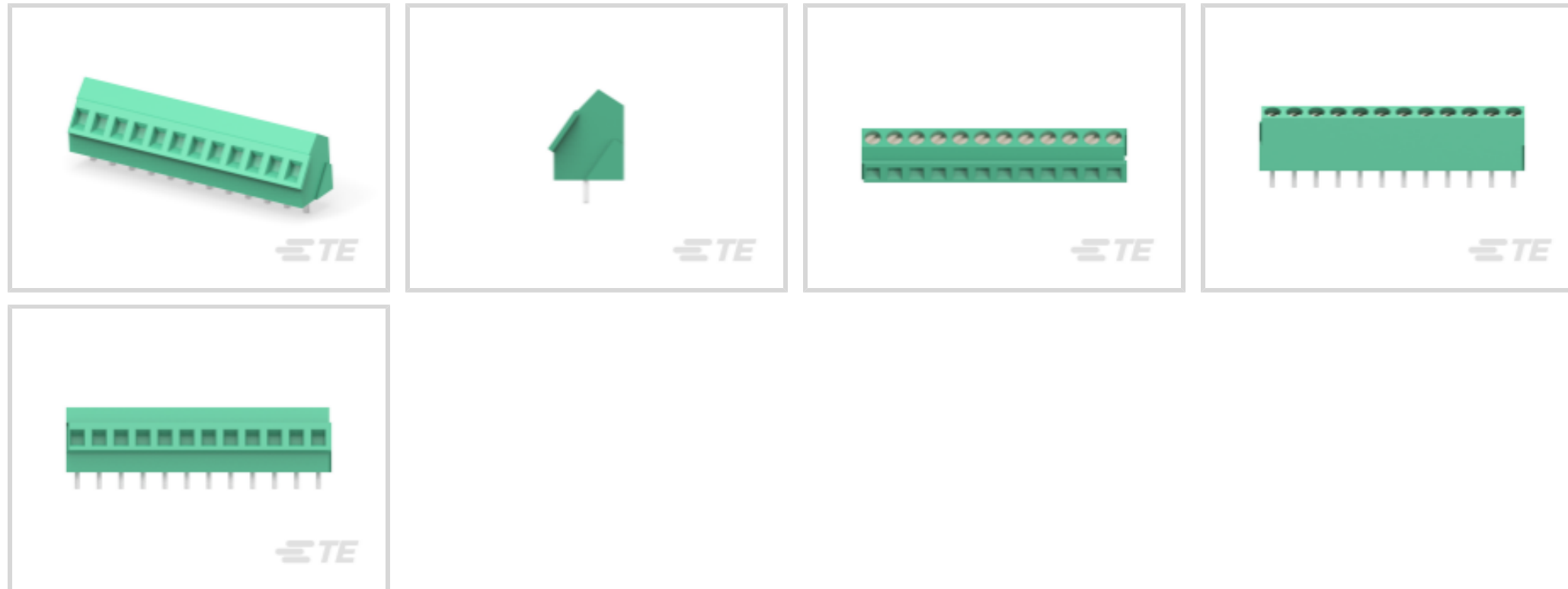
TE Internal #: 1-282847-2

12 Position PCB Terminal Block, Header, Wire-to-Board, 5.08 mm [.2 in] Centerline, 1 Row, 35° Wire Entry Angle, 30 – 12 AWG, .05 – 3 mm<sup>2</sup> Wire, 300 VAC

[View on TE.com >](#)



Connectors > Terminal Blocks & Strips > PCB Terminal Blocks



Number of Positions: 12

Terminal Block Connector Type: **Header**

Connector System: **Wire-to-Board**

Centerline (Pitch): 5.08 mm [.2 in]

Number of Rows: 1

### Features

#### Product Type Features

|                                   |                       |
|-----------------------------------|-----------------------|
| Wire Protection                   | With                  |
| Terminal Block Connector Type     | Header                |
| Connector System                  | Wire-to-Board         |
| Connector & Contact Terminates To | Printed Circuit Board |

#### Configuration Features

|                        |                |
|------------------------|----------------|
| Wire Entry Location    | Side           |
| Stacking Configuration | Side Stackable |
| Stacked Levels         | Without        |
| Number of Positions    | 12             |
| Number of Rows         | 1              |
| Wire Entry Angle       | 35°            |

#### Electrical Characteristics

|                   |         |
|-------------------|---------|
| Operating Voltage | 300 VAC |
|-------------------|---------|

#### Body Features



12 Position PCB Terminal Block, Header, Wire-to-Board, 5.08 mm [.2 in] Centerline, 1 Row, 35° Wire Entry Angle, 30 – 12 AWG, .05 – 3 mm<sup>2</sup> Wire, 300 VAC

|                       |          |
|-----------------------|----------|
| Primary Product Color | Green    |
| Product Orientation   | Vertical |

### Contact Features

|                                      |          |
|--------------------------------------|----------|
| Contact Mating Area Plating Material | Tin (Sn) |
| Contact Base Material                | Brass    |
| Contact Current Rating (Max)         | 17.5 A   |

### Termination Features

|                                |                       |
|--------------------------------|-----------------------|
| Termination Method to PCB      | Through Hole - Solder |
| Termination Post & Tail Length | 3.8 mm [.15 in]       |

### Mechanical Attachment

|                         |             |
|-------------------------|-------------|
| Screw Plating Material  | Nickel      |
| Screw Material          | Brass       |
| Thread Size             | M3          |
| Connector Mounting Type | Board Mount |

### Housing Features

|                    |                 |
|--------------------|-----------------|
| Housing Material   | PA 66           |
| Centerline (Pitch) | 5.08 mm [.2 in] |

### Dimensions

|           |             |
|-----------|-------------|
| Wire Size | 30 – 12 AWG |
|-----------|-------------|

### Usage Conditions

|                             |                             |
|-----------------------------|-----------------------------|
| Operating Temperature Range | -40 – 110 °C [-40 – 230 °F] |
|-----------------------------|-----------------------------|

### Operation/Application

|                     |                |
|---------------------|----------------|
| Circuit Application | Power & Signal |
|---------------------|----------------|

### Identification Marking

|               |       |
|---------------|-------|
| Marking Color | Black |
|---------------|-------|

### Packaging Features

|                    |     |
|--------------------|-----|
| Packaging Quantity | 100 |
|--------------------|-----|

### Product Compliance

[For compliance documentation, visit the product page on TE.com>](#)

|                              |                           |
|------------------------------|---------------------------|
| EU RoHS Directive 2011/65/EU | Compliant with Exemptions |
|------------------------------|---------------------------|



12 Position PCB Terminal Block, Header, Wire-to-Board, 5.08 mm [.2 in] Centerline, 1 Row, 35° Wire Entry Angle, 30 – 12 AWG, .05 – 3 mm² Wire, 300 VAC

EU ELV Directive 2000/53/EC

Compliant with Exemptions

China RoHS 2 Directive MIIT Order No 32, 2016

Restricted Materials Above Threshold

EU REACH Regulation (EC) No. 1907/2006

Current ECHA Candidate List: JAN 2025 (247)

Candidate List Declared Against: JUNE 2024 (241)

SVHC > Threshold:

Pb (.78% in Component Part)

**Article Safe Usage Statements:**

Do not eat, drink or smoke when using this product. Wash thoroughly after handling. Recycle if possible and dispose of the article by following all applicable governmental regulations relevant to your geographic location.

Halogen Content

Low Halogen - Br, Cl, F, I < 900 ppm per homogenous material. Also BFR/CFR/PVC Free

Solder Process Capability

Wave solder capable to 265°C

**Product Compliance Disclaimer**

This information is provided based on reasonable inquiry of our suppliers and represents our current actual knowledge based on the information they provided. This information is subject to change. The part numbers that TE has identified as EU RoHS compliant have a maximum concentration of 0.1% by weight in homogenous materials for lead, hexavalent chromium, mercury, PBB, PBDE, DBP, BBP, DEHP, DIBP, and 0.01% for cadmium, or qualify for an exemption to these limits as defined in the Annexes of Directive 2011/65/EU (RoHS2). Finished electrical and electronic equipment products will be CE marked as required by Directive 2011/65/EU. Components may not be CE marked. Additionally, the part numbers that TE has identified as EU ELV compliant have a maximum concentration of 0.1% by weight in homogenous materials for lead, hexavalent chromium, and mercury, and 0.01% for cadmium, or qualify for an exemption to these limits as defined in the Annexes of Directive 2000/53/EC (ELV). Regarding the REACH Regulation, the information TE provides on SVHC in articles for this part number is based on the latest European Chemicals Agency (ECHA) 'Guidance on requirements for substances in articles' posted at this URL: <https://echa.europa.eu/guidance-documents/guidance-on-reach>

## Compatible Parts



## Customers Also Bought



12 Position PCB Terminal Block, Header, Wire-to-Board, 5.08 mm [.2 in] Centerline, 1 Row, 35° Wire Entry Angle, 30 – 12 AWG, .05 – 3 mm<sup>2</sup> Wire, 300 VAC



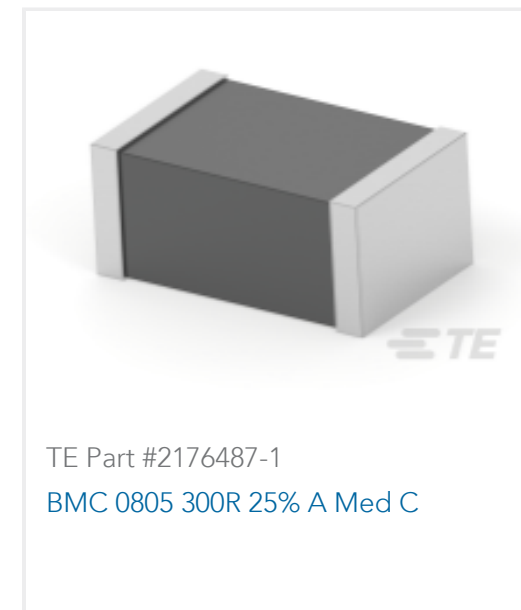
TE Part #6-2176389-5  
RQ 1206 499R 0.1% 10PPM 5K RL



TE Part #1676480-3  
CRG0402 1% 10K



TE Part #5208008-2  
HD-20 PLUG 25P VERT



TE Part #2176487-1  
BMC 0805 300R 25% A Med C



TE Part #1676376-2  
RN 0805 562R 0.1% 10PPM 1KRL



TE Part #2319747-6  
TRI-STATE DIP 4P G RECESS TUBE



TE Part #CAT-104MTA-PVUNH  
PCB Header: Polyester, Vertical,  
Unshrouded, No Mating Alignment

## Documents

### Product Drawings

[TERMI-BLOK PCB MOUNT 35 12P.](#)

English

### CAD Files

Customer View Model

[ENG\\_CVM\\_1-282847-2\\_D1.3d\\_igs.zip](#)

English

Customer View Model

[ENG\\_CVM\\_1-282847-2\\_D1.3d\\_stp.zip](#)

English

[3D PDF](#)

3D

Customer View Model

[ENG\\_CVM\\_1-282847-2\\_D1.2d\\_dxf.zip](#)

English

[3D PDF](#)

3D

Customer View Model

[ENG\\_CVM\\_CVM\\_1-282847-2\\_C.2d\\_dxf.zip](#)

English

Customer View Model

[ENG\\_CVM\\_CVM\\_1-282847-2\\_C.3d\\_igs.zip](#)

English

Customer View Model

[ENG\\_CVM\\_CVM\\_1-282847-2\\_C.3d\\_stp.zip](#)

English



12 Position PCB Terminal Block, Header, Wire-to-Board, 5.08 mm [.2 in] Centerline, 1 Row, 35° Wire Entry Angle, 30 – 12 AWG, .05 – 3 mm<sup>2</sup> Wire, 300 VAC

By downloading the CAD file I accept and agree to the [Terms and Conditions](#) of use.

### Datasheets & Catalog Pages

#### BUCHANAN TERMINAL BLOCKS CATALOG - EUROSTYLE TERMINAL BLOCKS

English

[1-1773458-1\\_EURO\\_STYLE\\_TERMINAL\\_BLOCKS\\_QRG](#)

English

### Product Specifications

#### Application Specification

English

### Agency Approvals

[UL](#)

English

## OUR CERTIFICATE

DiGi provide top-quality products and perfect service for customer worldwide through standardization, technological innovation and continuous improvement. DiGi through third-party certification, we stricly control the quality of products and services. Welcome your RFQ to

Email: [Info@DiGi-Electronics.com](mailto:Info@DiGi-Electronics.com)



Tel: +00 852-30501935

RFQ Email: [Info@DiGi-Electronics.com](mailto:Info@DiGi-Electronics.com)

DiGi is a global authorized distributor of electronic components.