

165046 Datasheet



<https://www.DiGi-Electronics.com>

DiGi Electronics Part Number	165046-DG
Manufacturer	TE Connectivity AMP Connectors
Manufacturer Product Number	165046
Description	CONN WIRE PIN TERM 14-16AWG PIDG
Detailed Description	Wire Pin Terminal Connector 14-16 AWG PIDG Crimp

This model 165046 is available at DiGi Electronics.

DiGi Electronics offers a global database of semiconductor and electronic component datasheets.

We welcome your inquiries regarding pricing, lead time, or other product-related questions.

 [Request a Quote](#)

 [Datasheet Search](#)



Tel: +00 852-30501935

RFQ Email: Info@DiGi-Electronics.com

DiGi is a global authorized distributor of electronic components.

Purchase and inquiry

Manufacturer Product Number:

165046

Series:

PIDG

Pin Diameter:

Circular - 0.071" (1.80mm) Dia

Length - Overall:

0.799" (20.29mm)

Insulation Diameter:

0.169" (4.29mm)

Termination:

Crimp

Color:

Blue

Contact Finish:

Tin

Diameter - Barrel OD:

-

Length - Termination:

0.535" (13.60mm)

Manufacturer:

TE Connectivity AMP Connectors

Product Status:

Active

Length - Pin:

0.264" (6.71mm)

Wire Gauge:

14-16 AWG

Insulation:

Insulated

Features:

Serrated Termination

Contact Material:

Copper

Diameter - Barrel ID:

-

Material - Insulation:

Polyamide (PA), Nylon

Environmental & Export classification

RoHS Status:

ROHS3 Compliant

REACH Status:

Vendor Undefined

HTSUS:

8536.90.4000

Moisture Sensitivity Level (MSL):

1 (Unlimited)

ECCN:

EAR99

165046 ✓ ACTIVE**PIDG**

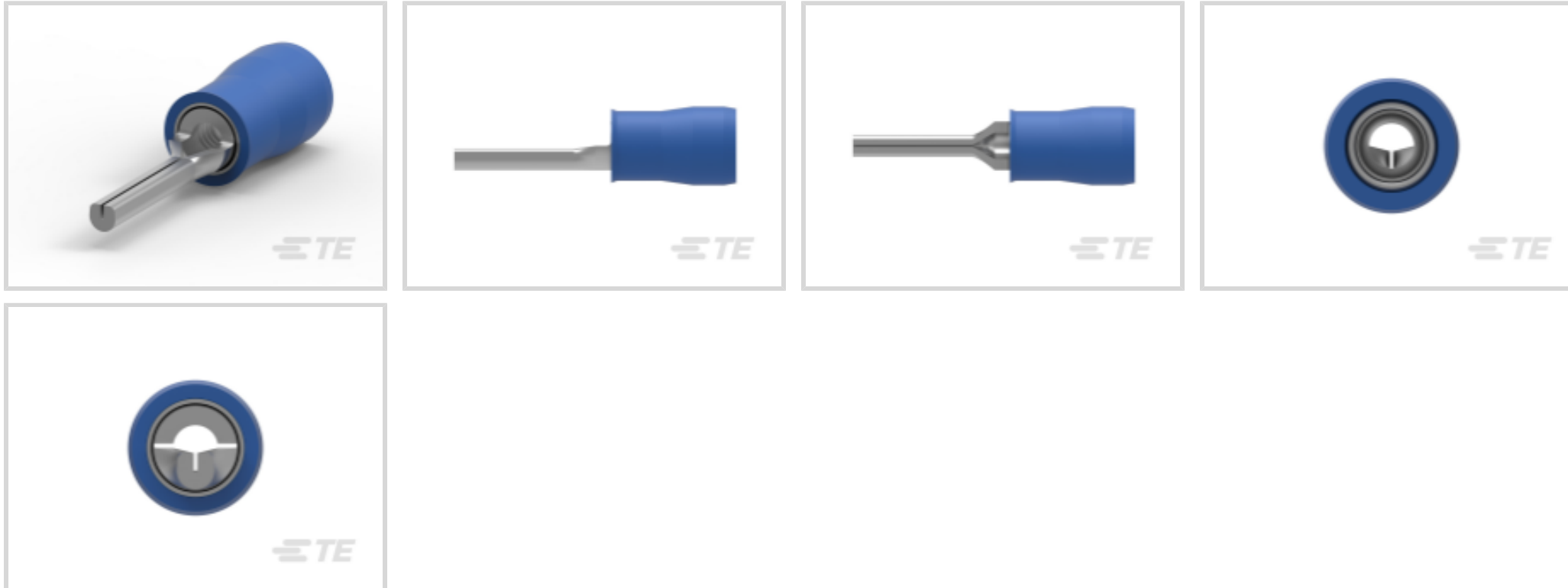
TE Internal #: 165046

Wire Pin, 1.78 mm [.07 in] Pin Diameter, 16 – 14 AWG, 1 – 2.6 mm²

Wire, 2050 – 5180 CMA, Closed Barrel, Tin Plating, 19.69 mm [.775 in] Length, PIDG

[View on TE.com >](#)

Terminals & Splices > Crimp Wire Pins, Tabs & Ferrules > PIDG Formed Wire Pins

Crimp Wire Terminal Type: **Wire Pin**Mating Pin Diameter: **1.78 mm [.07 in]**Compatible Insulation Diameter Range: **4.3 mm, 2.92 – 4.31 mm [.17 in, .115 – .17 in]**Wire Size: **1 – 2.6 mm²**[All PIDG Formed Wire Pins \(6\)](#)**Features****Product Type Features**

Sealable	No
Compatible With Discrete Wire Type	Stranded
Wire Insulation Support Retention Type	Insulation Support

Configuration Features

Compatible With Wire & Cable Type	Discrete Wire
-----------------------------------	---------------

Body Features

Sleeve Material	Nylon
Primary Product Color	Blue
Insulation Material	Nylon

Contact Features

Contact Mating Area Length	6.7 mm [.26 in]
Contact Fabrication	Stamped & Formed
Crimp Wire Terminal Type	Wire Pin



Wire Pin, 1.78 mm [.07 in] Pin Diameter, 16 – 14 AWG, 1 – 2.6 mm² Wire, 2050 – 5180 CMA, Closed Barrel, Tin Plating, 19.69 mm [.775 in] Length, PIDG

Mating Pin Diameter	1.78 mm [.07 in]
Barrel Type	Closed
Terminal Plating Material	Tin
Contact Shape & Form	Round
Terminal Orientation	Straight

Mechanical Attachment

Wire Insulation Support	With
-------------------------	------

Dimensions

DIN Wire Size	1 – 2.5 mm ²
Compatible Insulation Diameter Range	4.3 mm, 2.92 – 4.31 mm [.17 in] [.115 – .17 in]
Wire Size	2050 – 5180 CMA
Barrel Inside Diameter	4.3 mm [.169 in]
Terminal Material Thickness	.79 mm [.031 in]
Overall Product Length	19.69 mm [.775 in]

Usage Conditions

Insulation Option	Partially Insulated
-------------------	---------------------

Packaging Features

Packaging Quantity	1000
Packaging Method	Loose Piece

Product Compliance

[For compliance documentation, visit the product page on TE.com>](#)

EU RoHS Directive 2011/65/EU	Compliant
EU ELV Directive 2000/53/EC	Compliant
China RoHS 2 Directive MIIT Order No 32, 2016	No Restricted Materials Above Threshold
EU REACH Regulation (EC) No. 1907/2006	Current ECHA Candidate List: JUNE 2024 (241) Candidate List Declared Against: JUNE 2024 (241) Does not contain REACH SVHC
Halogen Content	Low Halogen - Br, Cl, F, I < 900 ppm per homogenous material. Also BFR/CFR/PVC Free
Solder Process Capability	Not applicable for solder process capability



Wire Pin, 1.78 mm [.07 in] Pin Diameter, 16 – 14 AWG, 1 – 2.6 mm² Wire, 2050 – 5180 CMA, Closed Barrel, Tin Plating, 19.69 mm [.775 in] Length, PIDG

Product Compliance Disclaimer

This information is provided based on reasonable inquiry of our suppliers and represents our current actual knowledge based on the information they provided. This information is subject to change. The part numbers that TE has identified as EU RoHS compliant have a maximum concentration of 0.1% by weight in homogenous materials for lead, hexavalent chromium, mercury, PBB, PBDE, DBP, BBP, DEHP, DIBP, and 0.01% for cadmium, or qualify for an exemption to these limits as defined in the Annexes of Directive 2011/65/EU (RoHS2). Finished electrical and electronic equipment products will be CE marked as required by Directive 2011/65/EU. Components may not be CE marked. Additionally, the part numbers that TE has identified as EU ELV compliant have a maximum concentration of 0.1% by weight in homogenous materials for lead, hexavalent chromium, and mercury, and 0.01% for cadmium, or qualify for an exemption to these limits as defined in the Annexes of Directive 2000/53/EC (ELV). Regarding the REACH Regulation, the information TE provides on SVHC in articles for this part number is based on the latest European Chemicals Agency (ECHA) 'Guidance on requirements for substances in articles' posted at this URL: <https://echa.europa.eu/guidance-documents/guidance-on-reach>

Compatible Parts




REPRESENTATION ONLY

TE Part # 525691
DAHT PG PIDG 16-14 ASSY



TE Part # 59824-1
TETRA-CRIMP PIDG PG FASTON 22-10 ASSY



TE Part # 2392022-2
BLUE BATTERY DAHT KIT 220V (47387-7)



TE Part # 169400
CERTI-LOK FRAME W/O DIES



REPRESENTATION ONLY

TE Part # 47387
DAHT PG PIDG 20-14 ASSY




TE Part # 58423-1
DIE, RBY IS9252



TE Part # 696394-2
TERM, WIRE PIN, PIDG, 16-14, T&R



TE Part # 58433-3
PRO CR ASSY, RBY IS9252



TE Part # 2392022-1
BLUE BATTERY DAHT KIT 110V (47387-7)



TE Part # 169404
CERTI-LOK DIE



TE Part # 539691-2
ERGO DIE R.B.Y



TE Part # 1-1377174-3
SMP 0-0165046-0



TE Part # 2063030-1
SDE DIESET, RBY, UL



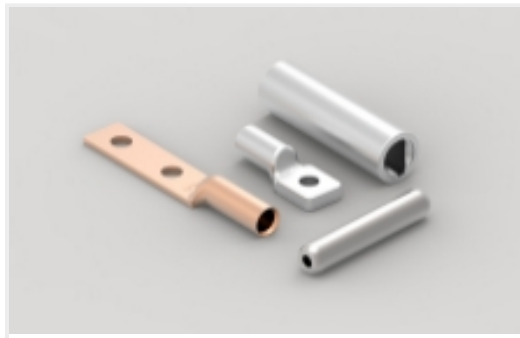
REPRESENTATION ONLY

TE Part # 47387-7
DAHT PG PIDG 16-12 ASSY

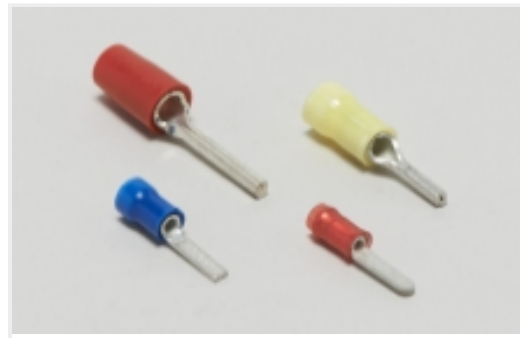


Wire Pin, 1.78 mm [.07 in] Pin Diameter, 16 – 14 AWG, 1 – 2.6 mm² Wire, 2050 – 5180 CMA, Closed Barrel, Tin Plating, 19.69 mm [.775 in] Length, PIDG

Also in the Series | PIDG



Compression Connectors(17)



Crimp Wire Pins, Tabs & Ferrules(41)



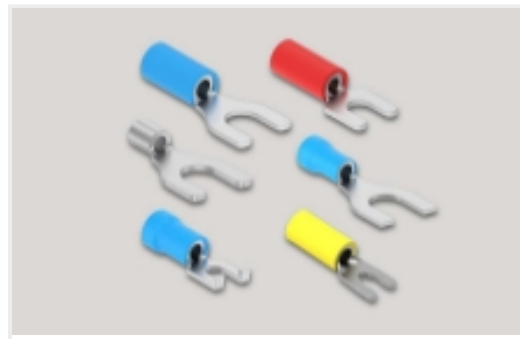
Hand Crimping Tools(2)



Knife Disconnects(11)



Ring Terminals(588)



Spade Terminals(228)

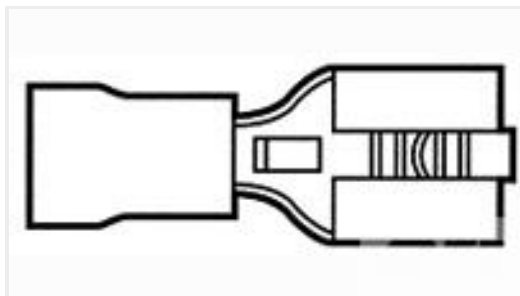


Special Purpose Terminals(1)



Splices(41)

Customers Also Bought



TE Part #9-160583-6
250 PIDG FASTON REC



TE Part #165172
PIDG WIRE PIN



TE Part #683320-000
STD06W-V



TE Part #4-1625999-0
HSC100 4R7 5%



TE Part #YDTS24Z17-35PAV001
RECP ASSY



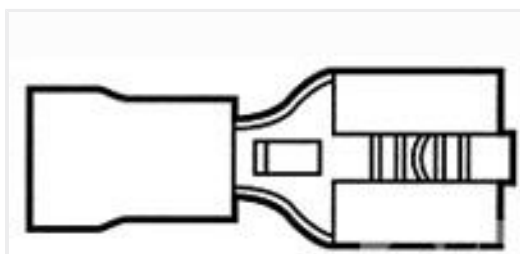
TE Part #AAG6503-00
91H3-17-09-1-ZN-HE200



TE Part #35346
TERMINAL, PIDG R 12-10 5/16



TE Part #165133
PIDG WIRE PIN



TE Part #9-160313-6
250 PIDG FASTON REC



TE Part #2-1105050-2
HN.D-C-STI.AU.0,5



Wire Pin, 1.78 mm [.07 in] Pin Diameter, 16 – 14 AWG, 1 – 2.6 mm² Wire, 2050 – 5180
CMA, Closed Barrel, Tin Plating, 19.69 mm [.775 in] Length, PIDG

Documents

Product Drawings

PIDG WIRE PIN

English

CAD Files

3D PDF

3D

Customer View Model

[ENG_CVM_CVM_165046_N.2d_dxf.zip](#)

English

Customer View Model

[ENG_CVM_CVM_165046_N.3d_igs.zip](#)

English

Customer View Model

[ENG_CVM_CVM_165046_N.3d_stp.zip](#)

English

3D PDF

English

Customer View Model

[ENG_CVM_165046_G.3d_igs.zip](#)

English

Customer View Model

[ENG_CVM_165046_G.3d_stp.zip](#)

English

Customer View Model

[ENG_CVM_165046_G.2d_dxf.zip](#)

English

By downloading the CAD file I accept and agree to the [Terms and Conditions](#) of use.

Datasheets & Catalog Pages

PIDG TERMINALS & SPLICES Quick Reference Guide

English

Instruction Sheets

Instruction Sheet (U.S.)

English

Agency Approvals

UL Report

English

OUR CERTIFICATE

DiGi provide top-quality products and perfect service for customer worldwide through standardization, technological innovation and continuous improvement. DiGi through third-party certification, we stricly control the quality of products and services. Welcome your RFQ to

Email: Info@DiGi-Electronics.com



Tel: +00 852-30501935

RFQ Email: Info@DiGi-Electronics.com

DiGi is a global authorized distributor of electronic components.