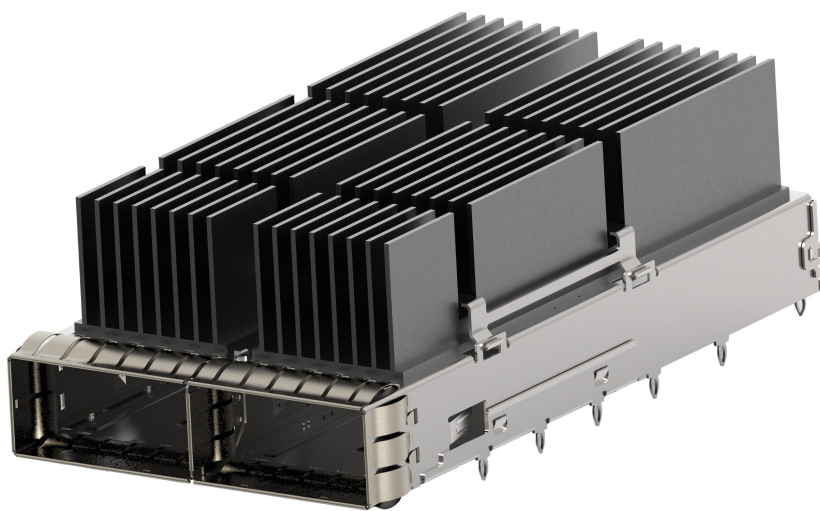


# 2342935-3 Datasheet



<https://www.DiGi-Electronics.com>

DiGi Electronics Part Number	2342935-3-DG
Manufacturer	<a href="#">TE Connectivity AMP Connectors</a>
Manufacturer Product Number	2342935-3
Description	QSFP-DD 1X2, STANDARD, W/ EXTRUD
Detailed Description	Position QSFP-DD (Double Density) Cage, Ganged (1 x 2) with Heat Sink Connector Press-Fit Through Hole

This model 2342935-3 is available at DiGi Electronics.

DiGi Electronics offers a global database of semiconductor and electronic component datasheets.

We welcome your inquiries regarding pricing, lead time, or other product-related questions.

 [Request a Quote](#)

 [Datasheet Search](#)



Tel: +00 852-30501935

RFQ Email: [Info@DiGi-Electronics.com](mailto:Info@DiGi-Electronics.com)

DiGi is a global authorized distributor of electronic components.

## Purchase and inquiry

Manufacturer Product Number:

2342935-3

Series:

-

Connector Style:

Cage, Ganged (1 x 2) with Heat Sink

Number of Positions:

-

Termination:

Press-Fit

Contact Finish:

-

Base Product Number:

2342935

Manufacturer:

TE Connectivity AMP Connectors

Product Status:

Active

Connector Type:

QSFP-DD (Double Density)

Mounting Type:

Through Hole

Features:

EMI Shielded

Contact Finish Thickness:

-

## Environmental & Export classification

RoHS Status:

RoHS Compliant

ECCN:

EAR99

Moisture Sensitivity Level (MSL):

1 (Unlimited)

HTSUS:

8536.69.4040

1-2342079-3 ✓ ACTIVE

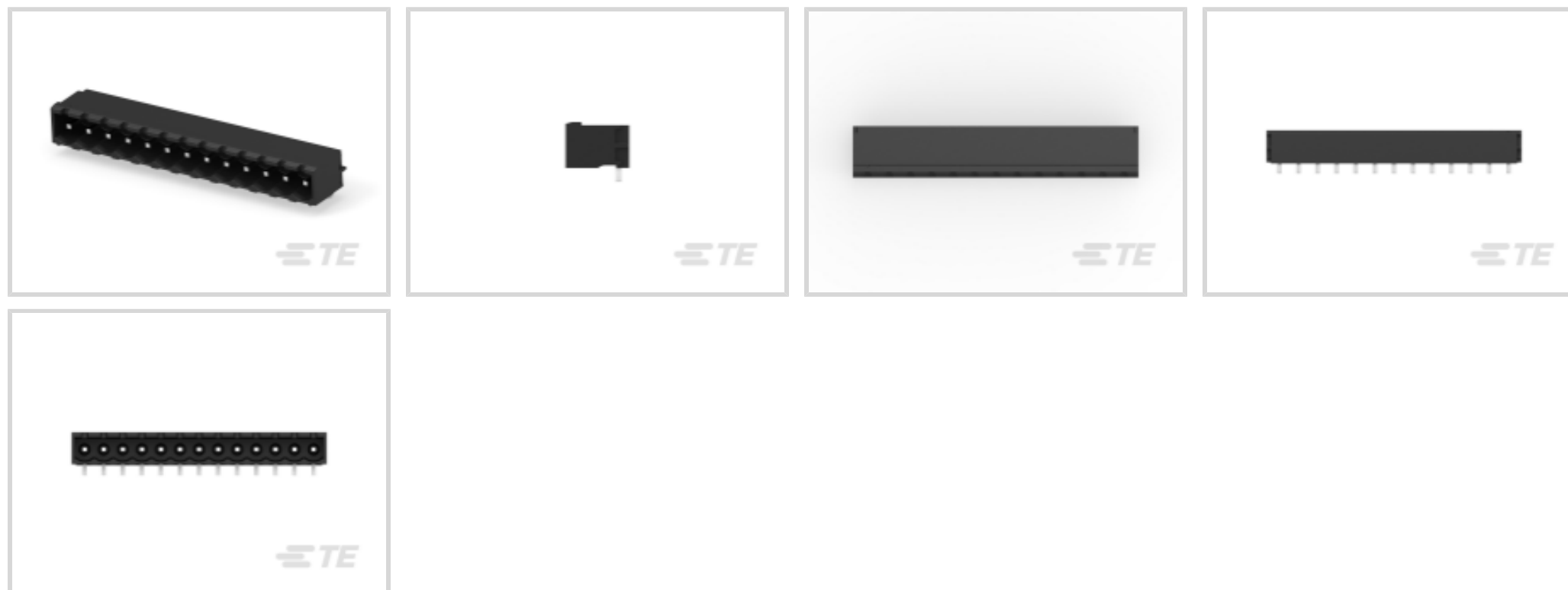
Buchanan

TE Internal #: 1-2342079-3

13 Position PCB Terminal Block, Header, Wire-to-Board, 5 mm [.197 in] Centerline, 1 Row, 300 VAC, Printed Circuit Board, Power & Signal, Board Mount

[View on TE.com >](#)

Connectors &gt; Terminal Blocks &amp; Strips &gt; PCB Terminal Blocks

Number of Positions: **13**Terminal Block Connector Type: **Header**Connector System: **Wire-to-Board**Centerline (Pitch): **5 mm [.197 in]**Number of Rows: **1**

## Features

### Termination Features

Termination Method to PCB	Through Hole - Solder
Termination Post & Tail Length	2.6 mm [.102 in]

### Body Features

Primary Product Color	Black
Product Orientation	Right Angle

### Packaging Features

Packaging Method	Box
------------------	-----

### Contact Features

Contact Mating Area Plating Material	Tin
Contact Base Material	Copper Magnesium
Contact Current Rating (Max)	15 A

### Housing Features

Housing Material	High Temperature Polyamide
------------------	----------------------------



Centerline (Pitch)	5 mm [.197 in]
--------------------	----------------

### Product Type Features

Header Type	Fully Shrouded
Terminal Block Connector Type	Header
Connector System	Wire-to-Board
Connector & Contact Terminates To	Printed Circuit Board

### Configuration Features

Stacking Configuration	Side Stackable
Number of Positions	13
Number of Rows	1

### Electrical Characteristics

Operating Voltage	300 VAC
-------------------	---------

### Mechanical Attachment

Connector Mounting Type	Board Mount
-------------------------	-------------

### Usage Conditions

Operating Temperature Range	-40 – 105 °C [-40 – 221 °F]
-----------------------------	-----------------------------

### Operation/Application

Circuit Application	Power & Signal
---------------------	----------------

### Other

EU RoHS Compliance	Compliant
EU ELV Compliance	Compliant

### Product Compliance

[For compliance documentation, visit the product page on TE.com>](#)

EU RoHS Directive 2011/65/EU	Compliant
EU ELV Directive 2000/53/EC	Compliant
China RoHS 2 Directive MIIT Order No 32, 2016	No Restricted Materials Above Threshold
EU REACH Regulation (EC) No. 1907/2006	Current ECHA Candidate List: JUNE 2024 (241) Candidate List Declared Against: JUNE 2024 (241) Does not contain REACH SVHC
Halogen Content	Low Halogen - Br, Cl, F, I < 900 ppm per homogenous material. Also BFR/CFR/PVC



13 Position PCB Terminal Block, Header, Wire-to-Board, 5 mm [.197 in] Centerline, 1 Row, 300 VAC, Printed Circuit Board, Power & Signal, Board Mount

Free

Solder Process Capability

Reflow solder capable to 260°C

Product Compliance Disclaimer

This information is provided based on reasonable inquiry of our suppliers and represents our current actual knowledge based on the information they provided. This information is subject to change. The part numbers that TE has identified as EU RoHS compliant have a maximum concentration of 0.1% by weight in homogenous materials for lead, hexavalent chromium, mercury, PBB, PBDE, DBP, BBP, DEHP, DIBP, and 0.01% for cadmium, or qualify for an exemption to these limits as defined in the Annexes of Directive 2011/65/EU (RoHS2). Finished electrical and electronic equipment products will be CE marked as required by Directive 2011/65/EU. Components may not be CE marked. Additionally, the part numbers that TE has identified as EU ELV compliant have a maximum concentration of 0.1% by weight in homogenous materials for lead, hexavalent chromium, and mercury, and 0.01% for cadmium, or qualify for an exemption to these limits as defined in the Annexes of Directive 2000/53/EC (ELV). Regarding the REACH Regulation, the information TE provides on SVHC in articles for this part number is based on the latest European Chemicals Agency (ECHA) 'Guidance on requirements for substances in articles' posted at this URL: <https://echa.europa.eu/guidance-documents/guidance-on-reach>

### Customers Also Bought



TE Part #3-5175475-5  
CHAMP 050 B/B REC V W/LEG 40P



TE Part #2837892-2  
OCEAN-2.0-APPLICATOR-S-046F053F-SSA



TE Part #2-2013519-0  
DYNAMIC D3900 H-HDR ASSY 10P Y TYPE-A



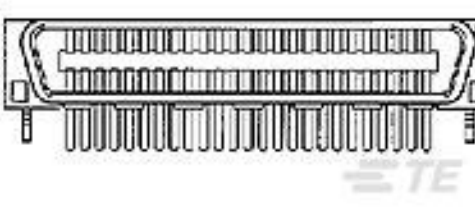
TE Part #3-5175475-7  
CHAMP 050 B/B REC V W/LEG 60P



TE Part #1-2229803-2  
D3950 HDR 7/11POS 1ROW Y KEY



TE Part #5917629-5  
AMP FH REC V 120P H-9 SIF



TE Part #3-5179275-8  
CHAMP 050-I PLUG H ASSY 68P



TE Part #3-2134249-3  
D3900S 7.5MM PITCH REC ASSY 3P BLACK Z



TE Part #CAT-D9934-A75H  
DYNAMIC 3400F HDR ASSY

### Documents

**Product Drawings**

13POS HDR 90 DEG,HT,5.00MM PITCH,TL2.6MM



English

---

**CAD Files**

**3D PDF**

3D

**Customer View Model**

[ENG\\_CVM\\_CVM\\_1-2342079-3\\_A.2d\\_dxf.zip](#)

English

**Customer View Model**

[ENG\\_CVM\\_CVM\\_1-2342079-3\\_A.3d\\_igs.zip](#)

English

**Customer View Model**

[ENG\\_CVM\\_CVM\\_1-2342079-3\\_A.3d\\_stp.zip](#)

English

By downloading the CAD file I accept and agree to the [Terms and Conditions](#) of use.

---

**Datasheets & Catalog Pages**

[BUCHANAN PCB TERMINAL BLOCKS](#)

English

---

**Agency Approvals**

[UL](#)

English

## OUR CERTIFICATE

DiGi provide top-quality products and perfect service for customer worldwide through standardization, technological innovation and continuous improvement. DiGi through third-party certification, we stricly control the quality of products and services. Welcome your RFQ to

Email: [Info@DiGi-Electronics.com](mailto:Info@DiGi-Electronics.com)



Tel: +00 852-30501935

RFQ Email: [Info@DiGi-Electronics.com](mailto:Info@DiGi-Electronics.com)

DiGi is a global authorized distributor of electronic components.