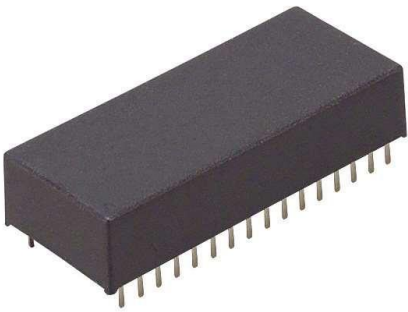


BQ4013YMA-70 Datasheet

www.digi-electronics.com



BQ4013YMA-70

<https://www.DiGi-Electronics.com>

| | |
|------------------------------|--|
| DiGi Electronics Part Number | BQ4013YMA-70-DG |
| Manufacturer | Texas Instruments |
| Manufacturer Product Number | BQ4013YMA-70 |
| Description | IC NVSRAM 1MBIT PAR 32DIP MODULE |
| Detailed Description | NVSRAM (Non-Volatile SRAM) Memory IC 1Mbit Parallel 70 ns 32-DIP Module (18.42x42.8) |



Tel: +00 852-30501935

RFQ Email: Info@DiGi-Electronics.com

DiGi is a global authorized distributor of electronic components.

Purchase and inquiry

Manufacturer Product Number:

BQ4013YMA-70

Series:

-

DiGi-Electronics Programmable:

Not Verified

Memory Format:

NVSRAM

Memory Size:

1Mbit

Memory Interface:

Parallel

Access Time:

70 ns

Operating Temperature:

0°C ~ 70°C (TA)

Package / Case:

32-DIP Module (0.610", 15.49mm)

Base Product Number:

BQ4013

Manufacturer:

Texas Instruments

Product Status:

Obsolete

Memory Type:

Non-Volatile

Technology:

NVSRAM (Non-Volatile SRAM)

Memory Organization:

128K x 8

Write Cycle Time - Word, Page:

70ns

Voltage - Supply:

4.5V ~ 5.5V

Mounting Type:

Through Hole

Supplier Device Package:

32-DIP Module (18.42x42.8)

Environmental & Export classification

RoHS Status:

ROHS3 Compliant

REACH Status:

REACH Unaffected

HTSUS:

8542.32.0041

Moisture Sensitivity Level (MSL):

1 (Unlimited)

ECCN:

EAR99

128 k × 8 NONVOLATILE SRAM (5 V, 3.3 V)

FEATURES

- Data Retention for at least 10 Years Without Power
- Automatic Write-Protection During Power-up/Power-down Cycles
- Conventional SRAM Operation, Including Unlimited Write Cycles
- Internal Isolation of Battery before Power Application
- 5-V or 3.3-V Operation
- Industry Standard 32-Pin DIP Pinout

GENERAL DESCRIPTION

The CMOS bq4013/Y/LY is a nonvolatile 1,048,576-bit static RAM organized as 131,072 words by 8 bits. The integral control circuitry and lithium energy source provide reliable nonvolatility coupled with the unlimited write cycles of standard SRAM.

The control circuitry constantly monitors the single supply for an out-of-tolerance condition. When V_{CC} falls out of tolerance, the SRAM is unconditionally write-protected to prevent an inadvertent write operation.

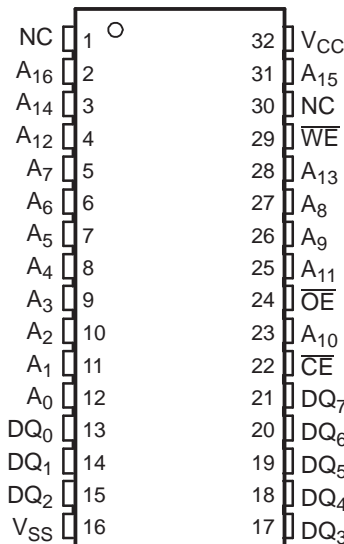
At this time the integral energy source is switched on to sustain the memory until after V_{CC} returns valid.

The bq4013/Y/LY uses extremely low standby current CMOS SRAMs, coupled with small lithium coin cells to provide nonvolatility without long write-cycle times and the write-cycle limitations associated with EEPROM.

The bq4013/Y/LY requires no external circuitry and is compatible with the industry-standard 1-Mb SRAM pinout.

PIN CONNECTIONS

32-Pin DIP Module
(TOP VIEW)



Please be aware that an important notice concerning availability, standard warranty, and use in critical applications of Texas Instruments semiconductor products and disclaimers thereto appears at the end of this data sheet.

DEVICE INFORMATION**Table 1. TERMINAL FUNCTIONS**

| TERMINAL | | I/O | DESCRIPTION |
|------------------------|--------|-----|----------------------|
| NAME | NUMBER | | |
| A ₀ | 12 | I | Address inputs |
| A ₁ | 11 | I | |
| A ₂ | 10 | I | |
| A ₃ | 9 | I | |
| A ₄ | 8 | I | |
| A ₅ | 7 | I | |
| A ₆ | 6 | I | |
| A ₇ | 5 | I | |
| A ₈ | 27 | I | |
| A ₉ | 26 | I | |
| A ₁₀ | 23 | I | |
| A ₁₁ | 25 | I | |
| A ₁₂ | 4 | I | |
| A ₁₃ | 28 | I | |
| A ₁₄ | 3 | I | |
| A ₁₅ | 31 | I | |
| A ₁₆ | 2 | I | |
| $\overline{\text{CE}}$ | 22 | I | Chip-enable input |
| DQ ₀ | 13 | I/O | Data input/output |
| DQ ₁ | 14 | I/O | |
| DQ ₂ | 15 | I/O | |
| DQ ₃ | 17 | I/O | |
| DQ ₄ | 18 | I/O | |
| DQ ₅ | 19 | I/O | |
| DQ ₆ | 20 | I/O | |
| DQ ₇ | 21 | I/O | |
| NC | 1 | - | No connect |
| | 30 | - | |
| $\overline{\text{OE}}$ | 24 | I | Output enable input |
| V _{CC} | 32 | I | Supply voltage input |
| V _{SS} | 16 | - | Ground |
| $\overline{\text{WE}}$ | 29 | I | Write enable input |

FUNCTIONAL DESCRIPTION

When power is valid, the bq4013/Y/LY operates as a standard CMOS SRAM. During power-down and power-up cycles, the bq4013/Y/LY acts as a nonvolatile memory, automatically protecting and preserving the memory contents.

Power-down/power-up control circuitry constantly monitors the V_{CC} supply for a power-fail-detect threshold V_{PFD}. The bq4013 monitors for V_{PFD} = 4.62 V typical for use in 5-V systems with 5% supply tolerance. The bq4013Y monitors for V_{PFD} = 4.37 V typical for use in 5-V systems with 10% supply tolerance. The bq4013LY monitors for V_{PFD} = 2.90 V (typ) for use in 3.3-V systems.

ORDERING INFORMATION

For the most current package and ordering information, see the Package Option Addendum at the end of the datasheet, or see the TI website at www.ti.com.

SELECTION GUIDE

| DEVICE NUMBER | MAXIMUM ACCESS TIME (ns) | NEGATIVE SUPPLY TOLERANCE (%) | NOMINAL INPUT VOLTAGE V_{CC} (V) | TEMPERATURE (°C) | |
|----------------|--------------------------|-------------------------------|------------------------------------|------------------|-----------|
| bq4013MA-85 | 85 | -5 | 5 | 0 to 70 | |
| bq4013MA-120 | 120 | | | | |
| bq4013YMA-70 | 70 | -10 | | | -40 to 85 |
| bq4013YMA-85 | 85 | | | | |
| bq4013YMA-120 | 120 | | | | |
| bq4013YMA-70N | 70 | | | | |
| bq4013YMA-85N | 85 | | | | |
| bq4013LYMA-70N | 70 | | 3.3 | | |

PART NUMBERING

| PRODUCT LINE | MEMORY DENSITY | INPUT VOLTAGE (V) | NEGATIVE SUPPLY TOLERANCE | PACKAGE | SPEED (ns) | TEMPERATURE (°C) |
|--------------|---|----------------------|---------------------------|-----------|--------------------------------------|---|
| bq40 | 13 | L | Y | MA | 70 | N |
| | 10 = 8 k × 8 11 = 32 k × 8 13 = 128 k × 8 14 = 256 k × 8 15 = 512 k × 8 16 = 1024 k × 8 17 = 2048 k × 8 | Blank = 5 L = 3.3 | Blank = 5% Y = 10% | MA = DIP | 70 85 100 120 150 200 | Blank = Commercial (0 to 70) N = Industrial (-40 to 85) |

ABSOLUTE MAXIMUM RATINGS⁽¹⁾

| PARAMETER | | CONDITION | VALUE | UNIT | |
|---------------------|---|---|-----------|---------------------------------|---|
| V _{CC} | DC voltage applied on VCC relative to VSS | | bq4013Y | –0.3 to 7.0 | V |
| | | | bq4013 | –0.3 to 7.0 | |
| | | | bq4013LY | –0.3 to 6.0 | |
| V _T | DC voltage applied on any pin excluding VCC relative to VSS | V _{VT} ≤ V _{CC} + 0.3 V | bq4013Y | –0.3 to 7.0 | V |
| | | | bq4013 | –0.3 to 7.0 | |
| | | | bq4013LY | –0.3 to (V _{CC} + 0.3) | |
| T _{OPR} | Operating temperature | Commercial | 0 to 70 | °C | |
| | | Industrial | –40 to 85 | | |
| T _{STG} | Storage temperature | Commercial | –10 to 70 | | |
| | | Industrial | –40 to 85 | | |
| T _{BIAS} | Temperature under bias | Commercial | –10 to 70 | | |
| | | Industrial | –40 to 85 | | |
| T _{SOLDER} | Soldering temperature | For 10 seconds | 260 | | |

(1) Permanent device damage may occur if **Absolute Maximum Ratings** are exceeded. Functional operation should be limited to the Recommended DC Operating Conditions detailed in this data sheet. Exposure to conditions beyond the operational limits for extended periods of time may affect device reliability.

RECOMMENDED OPERATING CONDITIONS (T_A = T_{OPR})

| | | MIN | TYP ⁽¹⁾ | MAX | UNIT | |
|-----------------|--------------------------|----------|--------------------|-----------------------|------|---|
| V _{CC} | Supply voltage | bq4013Y | 4.50 | 5.00 | 5.50 | V |
| | | bq4013 | 4.75 | 5.00 | 5.50 | |
| | | bq4013LY | 3.00 | 3.30 | 3.60 | |
| V _{SS} | Supply voltage | 0 | 0 | 0 | | |
| V _{IL} | Low-level input voltage | –0.3 | | 0.8 | | |
| V _{IH} | High-level Input voltage | 2.2 | | V _{CC} + 0.3 | | |

(1) Typical values indicate operation at T_A = 25°C.

DC ELECTRICAL CHARACTERISTICS

T_A = T_{OPR}, V_{CC(min)} ≤ V_{CC} ≤ V_{CC(max)}

| PARAMETER | | TEST CONDITIONS | MIN | TYP ⁽¹⁾ | MAX | UNIT | |
|------------------|----------------------------|---|---|--------------------|------|------|----|
| I _{LI} | Input leakage current | V _{IN} = V _{SS} to V _{CC} | | | ±1 | μA | |
| I _{LO} | Output leakage current | $\overline{CE} = V_{IH}$ or $\overline{OE} = V_{IH}$ or $\overline{WE} = V_{IL}$ | | | ±1 | | |
| V _{OH} | Output high voltage | I _{OH} = –1.0 mA | 2.4 | | | V | |
| V _{OL} | Output low voltage | I _{OL} = 2.1 mA | | | 0.4 | | |
| I _{SB1} | Standby supply current | $\overline{CE} = V_{IH}$ | | 1 | 2 | μA | |
| I _{SB2} | Standby supply current | $\overline{CE} \geq V_{CC} - 0.2$ V, 0V ≤ V _{IN} ≤ 0.2 V, or V _{IN} ≥ V _{CC} – 0.2 | | 0.1 | 1 | mA | |
| I _{CC} | Operating supply current | bq4013 | Minimum cycle, duty = 100%, $\overline{CE} = V_{IL}$, I _{I/O} = 0 mA | | | 50 | mA |
| | | bq4013Y | | | | | |
| | | bq4013LY | | | | 50 | |
| V _{PFD} | Power-fail-detect voltage | bq4013 | 4.55 | 4.62 | 4.75 | V | |
| | | bq4013Y | 4.30 | 4.37 | 4.50 | | |
| | | bq4013LY | 2.85 | 2.90 | 2.95 | | |
| V _{SO} | Supply switch-over voltage | bq4013 | | 3 | | V | |
| | | bq4013Y | | 3 | | | |
| | | bq4013LY | | 2.9 | | | |

(1) Typical values indicate operation at T_A = 25°C, V_{CC} = 5.0 V or V_{CC} = 3.3 V.

CAPACITANCE ($T_A = 25^\circ\text{C}$, $f = 1\text{ MHz}$, $V_{CC} = 5.0\text{ V}$ or $V_{CC} = 3.3\text{ V}$)

| PARAMETER ⁽¹⁾ | | TEST CONDITIONS | MIN | TYP | MAX | UNIT |
|--------------------------|--------------------------|----------------------|-----|-----|-----|------|
| $C_{I/O}$ | Input/output capacitance | Output voltage = 0 V | | | 8 | pF |
| C_{IN} | Input capacitance | Input voltage = 0 V | | | 10 | |

(1) Ensured by design. Not production tested.

AC TEST CONDITIONS

| PARAMETER | TEST CONDITIONS | |
|--|---|---|
| | 5 V | 3.3 V |
| Input pulse levels | 0 V to 3.0 V | 0 V to V_{CC} |
| Input rise and fall times | 5 ns | 5 ns |
| Input and output timing reference levels | 1.5 V (unless otherwise specified) | 50 % |
| Output load (including scope and jig) | See Figure 1 and Figure 2 | See Figure 3 and Figure 4 |

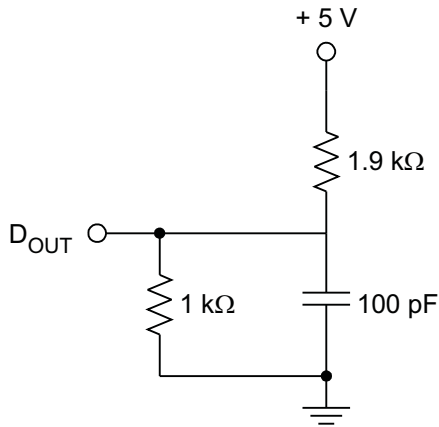


Figure 1. 5-V Output Load A

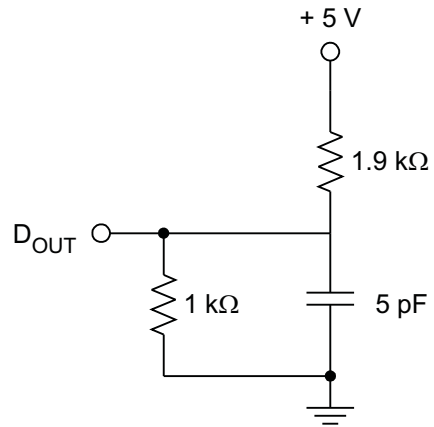


Figure 2. 5-V Output Load B

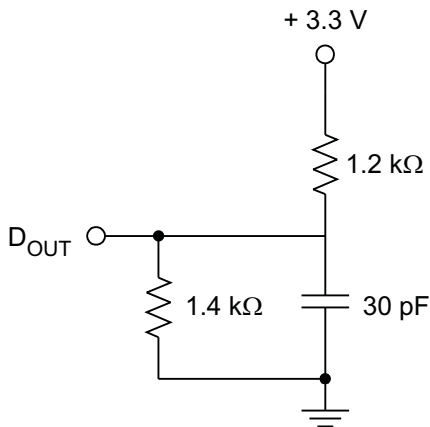


Figure 3. 3.3-V Output Load A

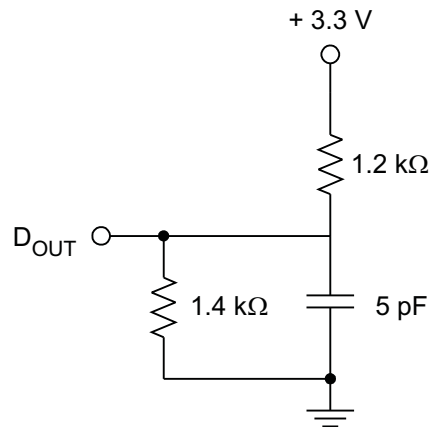
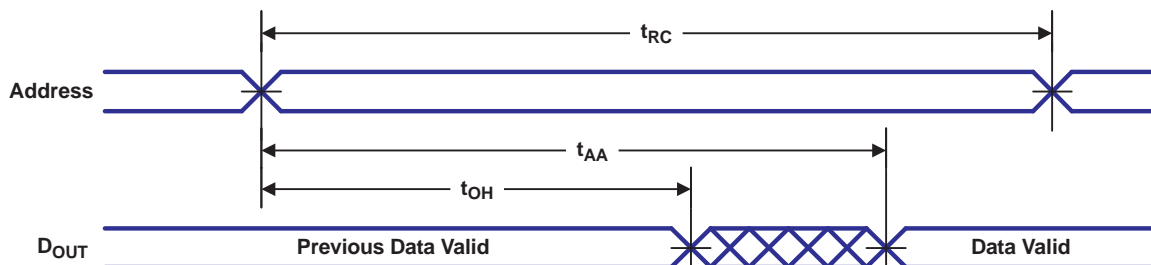


Figure 4. 3.3-V Output Load B

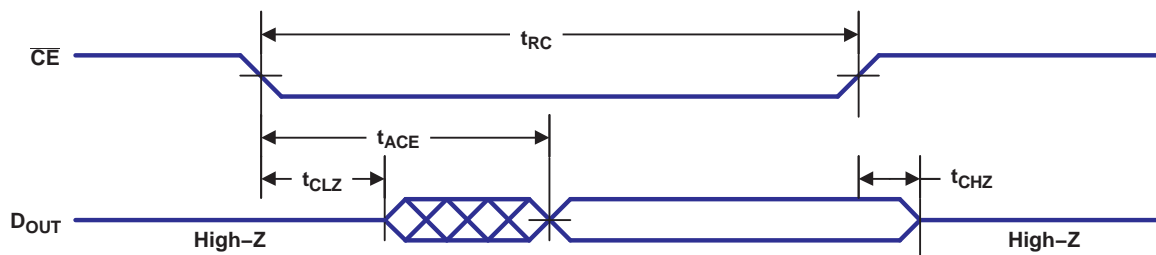
Table 2. READ CYCLE ($T_A = T_{OPR}$, $V_{CC(min)} \leq V_{CC} \leq V_{CC(max)}$)

| PARAMETER | | TEST CONDITIONS | -70 | | -85 | | -120 | | UNIT |
|-----------|------------------------------------|-----------------|-----|-----|-----|-----|------|-----|------|
| | | | MIN | MAX | MIN | MAX | MIN | MAX | |
| t_{RC} | Read cycle time | | 70 | | 85 | | 120 | | ns |
| t_{AA} | Address access time | Output load A | | 70 | | 85 | | 120 | |
| t_{ACE} | Chip enable access time | | | 70 | | 85 | | 120 | |
| t_{OE} | Output enable to output valid | | | 35 | | 45 | | 60 | |
| t_{CLZ} | Chip enable to output in low Z | Output load B | 5 | | 5 | | 5 | | |
| t_{OLZ} | Output enable to output in low Z | | 0 | | 0 | | 0 | | |
| t_{CHZ} | Chip disable to output in high Z | | 0 | 25 | 0 | 35 | 0 | 45 | |
| t_{OHZ} | Output disable to output in high Z | | 0 | 25 | 0 | 25 | 0 | 35 | |
| t_{OH} | Output hold from address change | Output load A | 10 | | 10 | | 10 | | |



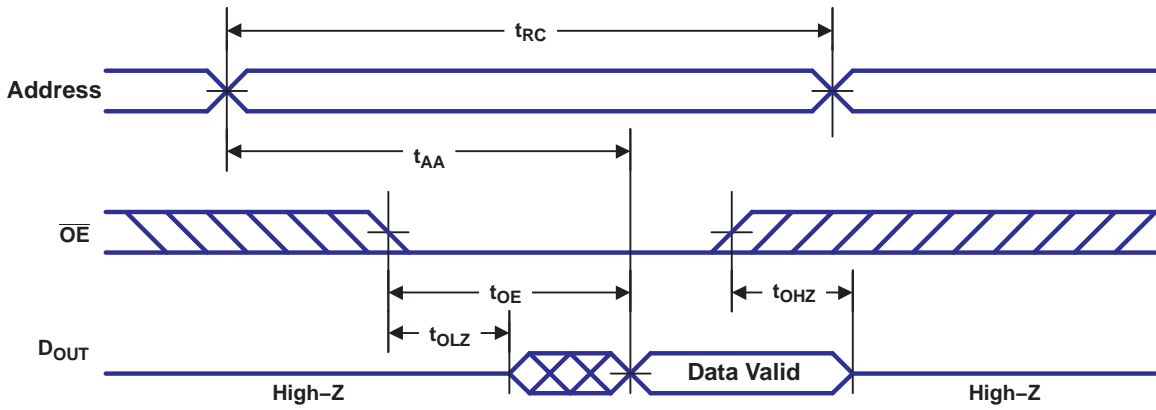
- (1) \overline{WE} is held high for a read cycle.
- (2) Device is continuously selected: $\overline{CE} = \overline{OE} = V_{IL}$.

Figure 5. Read Cycle No. 1 (Address Access) ⁽¹⁾⁽²⁾



- (1) \overline{WE} is held high for a read cycle.
- (2) Device is continuously selected: $\overline{CE} = \overline{OE} = V_{IL}$.
- (3) Address is valid prior to or coincident with \overline{CE} transition low.

Figure 6. Read Cycle No. 2 (\overline{CE} Access) ⁽¹⁾⁽²⁾⁽³⁾



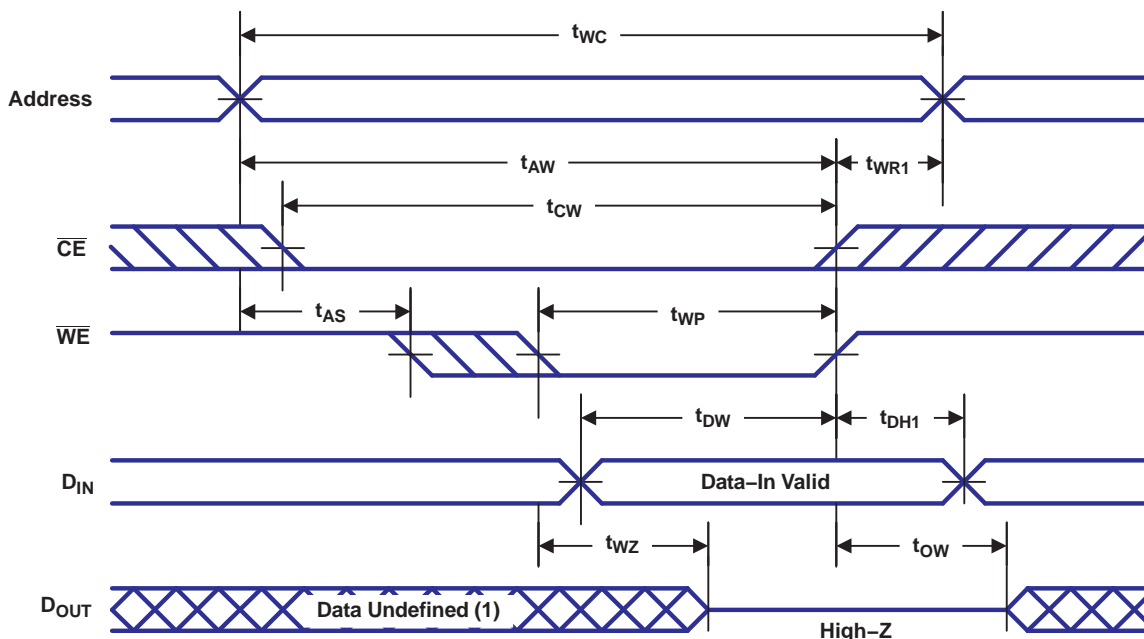
- (1) \overline{WE} is held high for a read cycle.
- (2) Device is continuously selected: $\overline{CE} = V_{IL}$.

Figure 7. Read Cycle No. 3 (\overline{OE} Access) ⁽¹⁾⁽²⁾

Table 3. WRITE CYCLE ($T_A = T_{OPR}$, $V_{CC(min)} \leq V_{CC} \leq V_{CC(max)}$)

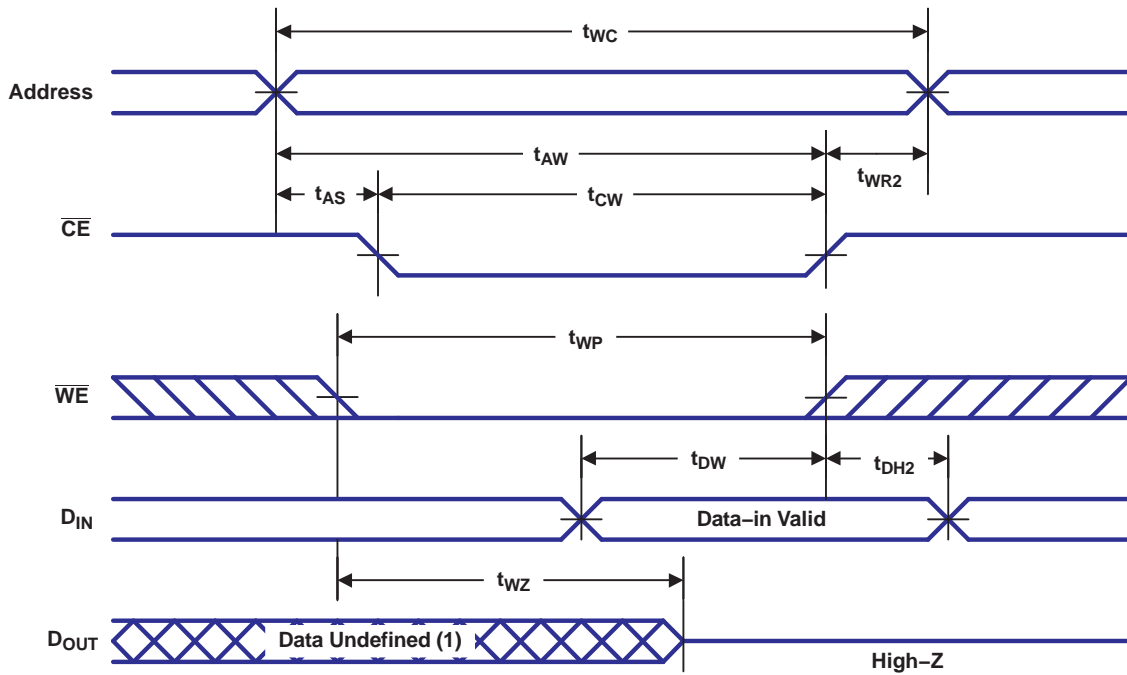
| PARAMETER | TEST CONDITIONS | -70 | | -85 | | -120 | | UNIT |
|-----------|-------------------------------------|-----|-----|-----|-----|------|-----|------|
| | | MIN | MAX | MIN | MAX | MIN | MAX | |
| t_{WC} | Write cycle time | 70 | | 85 | | 120 | | ns |
| t_{CW} | Chip enable to end of write | 65 | | 75 | | 100 | | |
| t_{AW} | Address valid to end of write | 65 | | 75 | | 100 | | |
| t_{AS} | Address setup time | 0 | | 0 | | 0 | | |
| t_{WP} | Write pulse width | 55 | | 65 | | 85 | | |
| t_{WR1} | Write recovery time (write cycle 1) | 5 | | 5 | | 5 | | |
| t_{WR2} | Write recovery time (write cycle 2) | 15 | | 15 | | 15 | | |
| t_{DW} | Data valid to end of write | 30 | | 35 | | 45 | | |
| t_{DH1} | Data hold time (write cycle 1) | 0 | | 0 | | 0 | | |
| t_{DH2} | Data hold time (write cycle 2) | 0 | | 0 | | 0 | | |
| t_{WZ} | Write enabled to output in high Z | 0 | 25 | 0 | 30 | 0 | 40 | |
| t_{OW} | Output active from end of write | 5 | | 5 | | 5 | | |

- (1) A write ends at the earlier transition of \overline{CE} going high and \overline{WE} going high.
- (2) A write occurs during the overlap of a low \overline{CE} and a low \overline{WE} . A write begins at the later transition of \overline{CE} going low and \overline{WE} going low.
- (3) Either t_{WR1} or t_{WR2} must be met.
- (4) Either t_{DH1} or t_{DH2} must be met.
- (5) If \overline{CE} goes low simultaneously with \overline{WE} going low or after \overline{WE} going low, the outputs remain in high-impedance state.



- (1) \overline{CE} or \overline{WE} must be high during address transition.
- (2) Because I/O may be active (\overline{OE} low) during this period, data input signals of opposite polarity to the outputs must not be applied.
- (3) If \overline{OE} is high, the I/O pins remain in a state of high impedance.

Figure 8. Write Cycle No. 1 (\overline{WE} -Controlled) (1)(2)(3)



- (1) \overline{CE} or \overline{WE} must be high during address transition.
- (2) Because I/O may be active (\overline{OE} low) during this period, data input signals of opposite polarity to the outputs must not be applied.
- (3) If \overline{OE} is high, the I/O pins remain in a state of high impedance.
- (4) Either t_{WR1} or t_{WR2} must be met.
- (5) Either t_{DH1} or t_{DH2} must be met.

Figure 9. Write Cycle No. 2 (\overline{CE} -Controlled) (1)(2)(3)(4)(5)

Table 4. 5-V POWER-DOWN/POWER-UP ($T_A = T_{OPR}$)

| PARAMETER | | TEST CONDITIONS | MIN | TYP ⁽¹⁾ | MAX | UNIT |
|-----------|---|--|-----|--------------------|-----|---------|
| t_{PF} | V_{CC} slew, 4.75 to 4.25 V | | 300 | | | μ s |
| t_{FS} | V_{CC} slew, 4.25 to V_{SO} | | 10 | | | μ s |
| t_{PU} | V_{CC} slew, V_{SO} to V_{PFD} (max.) | | 0 | | | μ s |
| t_{CER} | Chip enable recovery time | Time during which SRAM is write-protected after V_{CC} passes V_{PFD} on power-up. | 40 | 80 | 120 | ms |
| t_{DR} | Data-retention time in absence of V_{CC} | $T_A = 25^\circ\text{C}$ ⁽²⁾ | 10 | | | years |
| t_{WPT} | Write-protect time | Delay after V_{CC} slews down past V_{PFD} before SRAM is writeprotected. | 40 | 100 | 150 | μ s |

- (1) Typical values indicate operation at $T_A = 25^\circ\text{C}$, $V_{CC} = 5\text{V}$.
- (2) Batteries are disconnected from circuit until after V_{CC} is applied for the first time. t_{DR} is the accumulated time in absence of power beginning when power is first applied to the device.

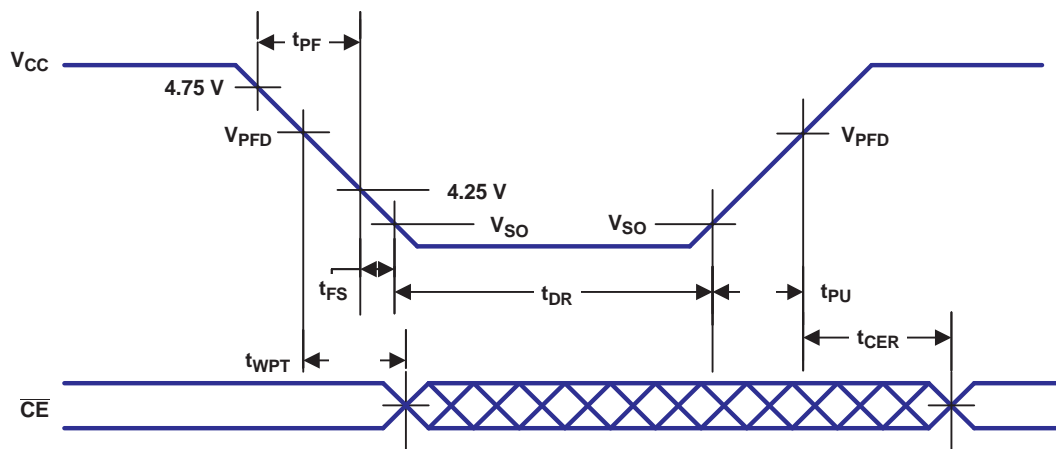


Figure 10. 5-V Power-Down/Power-Up Timing

Table 5. 3.3-V POWER-DOWN/POWER-UP ($T_A = T_{OPR}$)

| PARAMETER | | TEST CONDITIONS | MIN | TYP ⁽¹⁾ | MAX | UNIT |
|-----------|--|--|-----|--------------------|-----|---------------|
| t_F | V_{CC} slew, 3 V to 0 V | | 300 | | | μs |
| t_R | V_{CC} slew, V_{SO} to $V_{PFD(max)}$ | | 100 | | | |
| t_{CER} | Chip enable recovery time | Time during which SRAM is write-protected after V_{CC} passes V_{PFD} on power-up. | 10 | | 85 | ms |
| t_{DR} | Data-retention time in absence of V_{CC} | $T_A = 25^\circ\text{C}^{(2)}$ | 10 | | | years |

- (1) Typical values indicate operation at $T_A = 25^\circ\text{C}$, $V_{CC} = 3.3\text{ V}$.
- (2) Batteries are disconnected from circuit until after V_{CC} is applied for the first time. Data retention time (t_{DR}) is the accumulated time in absence of power beginning when power is first applied to the device.

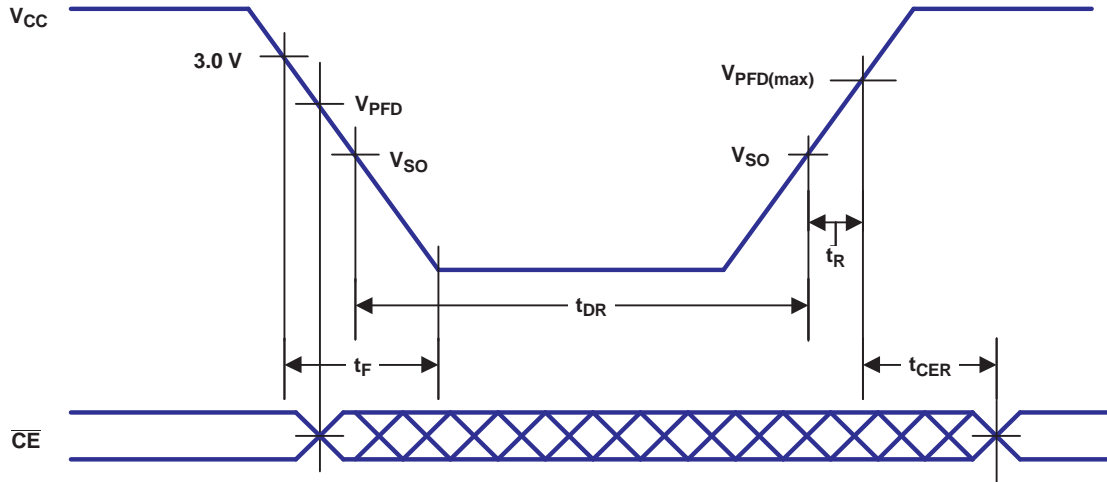


Figure 11. 3.3-V Power-Down/Power-Up Timing

CAUTION:

Negative undershoots below the absolute maximum rating of -0.3 V in battery-backup mode may affect data integrity.

PACKAGING INFORMATION

| Orderable Device | Status (1) | Package Type | Package Drawing | Pins | Package Qty | Eco Plan (2) | Lead/Ball Finish (6) | MSL Peak Temp (3) | Op Temp (°C) | Device Marking (4/5) | Samples |
|------------------|---------------|--------------|--------------------|------|----------------|-----------------|-------------------------|----------------------|--------------|-------------------------|---------|
| BQ4013LYMA-70 | OBSOLETE | DIP MODULE | MA | 32 | | TBD | Call TI | Call TI | | | |
| BQ4013LYMA-70N | OBSOLETE | DIP MODULE | MA | 32 | | TBD | Call TI | Call TI | -40 to 85 | | |
| BQ4013MA-120 | OBSOLETE | DIP MODULE | MA | 32 | | TBD | Call TI | Call TI | 0 to 70 | | |
| BQ4013MA-85 | LIFEBUY | DIP MODULE | MA | 32 | | TBD | Call TI | Call TI | 0 to 70 | | |
| BQ4013YMA-120 | OBSOLETE | DIP MODULE | MA | 32 | | TBD | Call TI | Call TI | 0 to 70 | | |
| BQ4013YMA-70 | OBSOLETE | DIP MODULE | MA | 32 | | TBD | Call TI | Call TI | 0 to 70 | | |
| BQ4013YMA-70N | OBSOLETE | DIP MODULE | MA | 32 | | TBD | Call TI | Call TI | -40 to 85 | | |
| BQ4013YMA-85 | OBSOLETE | DIP MODULE | MA | 32 | | TBD | Call TI | Call TI | 0 to 70 | | |
| BQ4013YMA-85N | OBSOLETE | DIP MODULE | MA | 32 | | TBD | Call TI | Call TI | -40 to 85 | | |

(1) The marketing status values are defined as follows:

ACTIVE: Product device recommended for new designs.

LIFEBUY: TI has announced that the device will be discontinued, and a lifetime-buy period is in effect.

NRND: Not recommended for new designs. Device is in production to support existing customers, but TI does not recommend using this part in a new design.

PREVIEW: Device has been announced but is not in production. Samples may or may not be available.

OBSOLETE: TI has discontinued the production of the device.

(2) Eco Plan - The planned eco-friendly classification: Pb-Free (RoHS), Pb-Free (RoHS Exempt), or Green (RoHS & no Sb/Br) - please check <http://www.ti.com/productcontent> for the latest availability information and additional product content details.

TBD: The Pb-Free/Green conversion plan has not been defined.

Pb-Free (RoHS): TI's terms "Lead-Free" or "Pb-Free" mean semiconductor products that are compatible with the current RoHS requirements for all 6 substances, including the requirement that lead not exceed 0.1% by weight in homogeneous materials. Where designed to be soldered at high temperatures, TI Pb-Free products are suitable for use in specified lead-free processes.

Pb-Free (RoHS Exempt): This component has a RoHS exemption for either 1) lead-based flip-chip solder bumps used between the die and package, or 2) lead-based die adhesive used between the die and leadframe. The component is otherwise considered Pb-Free (RoHS compatible) as defined above.

Green (RoHS & no Sb/Br): TI defines "Green" to mean Pb-Free (RoHS compatible), and free of Bromine (Br) and Antimony (Sb) based flame retardants (Br or Sb do not exceed 0.1% by weight in homogeneous material)

(3) MSL, Peak Temp. - The Moisture Sensitivity Level rating according to the JEDEC industry standard classifications, and peak solder temperature.

(4) There may be additional marking, which relates to the logo, the lot trace code information, or the environmental category on the device.

(5) Multiple Device Markings will be inside parentheses. Only one Device Marking contained in parentheses and separated by a "~" will appear on a device. If a line is indented then it is a continuation of the previous line and the two combined represent the entire Device Marking for that device.

⁽⁶⁾ Lead/Ball Finish - Orderable Devices may have multiple material finish options. Finish options are separated by a vertical ruled line. Lead/Ball Finish values may wrap to two lines if the finish value exceeds the maximum column width.

Important Information and Disclaimer:The information provided on this page represents TI's knowledge and belief as of the date that it is provided. TI bases its knowledge and belief on information provided by third parties, and makes no representation or warranty as to the accuracy of such information. Efforts are underway to better integrate information from third parties. TI has taken and continues to take reasonable steps to provide representative and accurate information but may not have conducted destructive testing or chemical analysis on incoming materials and chemicals. TI and TI suppliers consider certain information to be proprietary, and thus CAS numbers and other limited information may not be available for release.

In no event shall TI's liability arising out of such information exceed the total purchase price of the TI part(s) at issue in this document sold by TI to Customer on an annual basis.

IMPORTANT NOTICE

Texas Instruments Incorporated and its subsidiaries (TI) reserve the right to make corrections, enhancements, improvements and other changes to its semiconductor products and services per JESD46, latest issue, and to discontinue any product or service per JESD48, latest issue. Buyers should obtain the latest relevant information before placing orders and should verify that such information is current and complete. All semiconductor products (also referred to herein as "components") are sold subject to TI's terms and conditions of sale supplied at the time of order acknowledgment.

TI warrants performance of its components to the specifications applicable at the time of sale, in accordance with the warranty in TI's terms and conditions of sale of semiconductor products. Testing and other quality control techniques are used to the extent TI deems necessary to support this warranty. Except where mandated by applicable law, testing of all parameters of each component is not necessarily performed.

TI assumes no liability for applications assistance or the design of Buyers' products. Buyers are responsible for their products and applications using TI components. To minimize the risks associated with Buyers' products and applications, Buyers should provide adequate design and operating safeguards.

TI does not warrant or represent that any license, either express or implied, is granted under any patent right, copyright, mask work right, or other intellectual property right relating to any combination, machine, or process in which TI components or services are used. Information published by TI regarding third-party products or services does not constitute a license to use such products or services or a warranty or endorsement thereof. Use of such information may require a license from a third party under the patents or other intellectual property of the third party, or a license from TI under the patents or other intellectual property of TI.

Reproduction of significant portions of TI information in TI data books or data sheets is permissible only if reproduction is without alteration and is accompanied by all associated warranties, conditions, limitations, and notices. TI is not responsible or liable for such altered documentation. Information of third parties may be subject to additional restrictions.

Resale of TI components or services with statements different from or beyond the parameters stated by TI for that component or service voids all express and any implied warranties for the associated TI component or service and is an unfair and deceptive business practice. TI is not responsible or liable for any such statements.

Buyer acknowledges and agrees that it is solely responsible for compliance with all legal, regulatory and safety-related requirements concerning its products, and any use of TI components in its applications, notwithstanding any applications-related information or support that may be provided by TI. Buyer represents and agrees that it has all the necessary expertise to create and implement safeguards which anticipate dangerous consequences of failures, monitor failures and their consequences, lessen the likelihood of failures that might cause harm and take appropriate remedial actions. Buyer will fully indemnify TI and its representatives against any damages arising out of the use of any TI components in safety-critical applications.

In some cases, TI components may be promoted specifically to facilitate safety-related applications. With such components, TI's goal is to help enable customers to design and create their own end-product solutions that meet applicable functional safety standards and requirements. Nonetheless, such components are subject to these terms.

No TI components are authorized for use in FDA Class III (or similar life-critical medical equipment) unless authorized officers of the parties have executed a special agreement specifically governing such use.

Only those TI components which TI has specifically designated as military grade or "enhanced plastic" are designed and intended for use in military/aerospace applications or environments. Buyer acknowledges and agrees that any military or aerospace use of TI components which have **not** been so designated is solely at the Buyer's risk, and that Buyer is solely responsible for compliance with all legal and regulatory requirements in connection with such use.

TI has specifically designated certain components as meeting ISO/TS16949 requirements, mainly for automotive use. In any case of use of non-designated products, TI will not be responsible for any failure to meet ISO/TS16949.

Products

| | |
|------------------------------|--|
| Audio | www.ti.com/audio |
| Amplifiers | amplifier.ti.com |
| Data Converters | dataconverter.ti.com |
| DLP® Products | www.dlp.com |
| DSP | dsp.ti.com |
| Clocks and Timers | www.ti.com/clocks |
| Interface | interface.ti.com |
| Logic | logic.ti.com |
| Power Mgmt | power.ti.com |
| Microcontrollers | microcontroller.ti.com |
| RFID | www.ti-rfid.com |
| OMAP Applications Processors | www.ti.com/omap |
| Wireless Connectivity | www.ti.com/wirelessconnectivity |

Applications

| | |
|-------------------------------|--|
| Automotive and Transportation | www.ti.com/automotive |
| Communications and Telecom | www.ti.com/communications |
| Computers and Peripherals | www.ti.com/computers |
| Consumer Electronics | www.ti.com/consumer-apps |
| Energy and Lighting | www.ti.com/energy |
| Industrial | www.ti.com/industrial |
| Medical | www.ti.com/medical |
| Security | www.ti.com/security |
| Space, Avionics and Defense | www.ti.com/space-avionics-defense |
| Video and Imaging | www.ti.com/video |

TI E2E Community

e2e.ti.com

OUR CERTIFICATE

DiGi provide top-quality products and perfect service for customer worldwide through standardization, technological innovation and continuous improvement. DiGi through third-party certification, we strictly control the quality of products and services. Welcome your RFQ to

Email: Info@DiGi-Electronics.com



Tel: +00 852-30501935

RFQ Email: Info@DiGi-Electronics.com

DiGi is a global authorized distributor of electronic components.