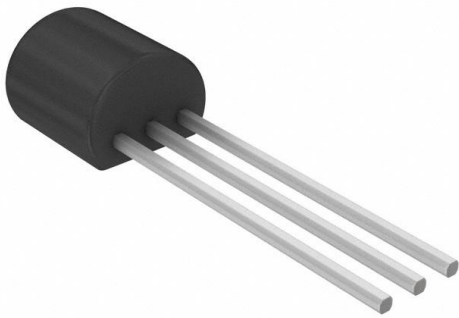


TLV431ACL P Datasheet

www.digi-electronics.com



<https://www.DiGi-Electronics.com>

DiGi Electronics Part Number	TLV431ACL P-DG
Manufacturer	Texas Instruments
Manufacturer Product Number	TLV431ACL P
Description	IC VREF SHUNT ADJ 1% TO92-3
Detailed Description	Shunt Voltage Reference IC Adjustable 1.24V 6 VV ± 1% 15 mA TO-92-3

This model TLV431ACL P is available at DiGi Electronics.

DiGi Electronics offers a global database of semiconductor and electronic component datasheets.

We welcome your inquiries regarding pricing, lead time, or other product-related questions.

 [Request a Quote](#)

 [Datasheet Search](#)



Tel: +00 852-30501935

RFQ Email: Info@DiGi-Electronics.com

DiGi is a global authorized distributor of electronic components.

Purchase and inquiry

Manufacturer Product Number:

TLV431ACLP

Series:

-

Reference Type:

Shunt

Voltage - Output (Min/Fixed):

1.24V

Current - Output:

15 mA

Temperature Coefficient:

-

Noise - 10Hz to 10kHz:

-

Current - Supply:

-

Operating Temperature:

0°C ~ 70°C (TA)

Package / Case:

TO-226-3, TO-92-3 (TO-226AA)

Base Product Number:

TLV431

Manufacturer:

Texas Instruments

Product Status:

Last Time Buy

Output Type:

Adjustable

Voltage - Output (Max):

6 V

Tolerance:

±1%

Noise - 0.1Hz to 10Hz:

-

Voltage - Input:

-

Current - Cathode:

80 µA

Mounting Type:

Through Hole

Supplier Device Package:

TO-92-3

Environmental & Export classification

RoHS Status:

ROHS3 Compliant

REACH Status:

REACH Unaffected

HTSUS:

8542.39.0001

Moisture Sensitivity Level (MSL):

Not Applicable

ECCN:

EAR99

OUR CERTIFICATE

DiGi provide top-quality products and perfect service for customer worldwide through standardization, technological innovation and continuous improvement. DiGi through third-party certification, we stricly control the quality of products and services. Welcome your RFQ to

Email: Info@DiGi-Electronics.com



Tel: +00 852-30501935

RFQ Email: Info@DiGi-Electronics.com

DiGi is a global authorized distributor of electronic components.