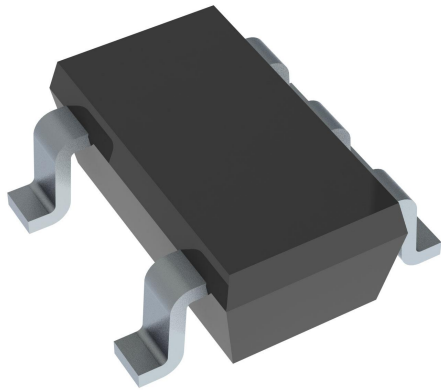


TPS2829DBVT Datasheet

www.digi-electronics.com



<https://www.DiGi-Electronics.com>

DiGi Electronics Part Number	TPS2829DBVT-DG
Manufacturer	Texas Instruments
Manufacturer Product Number	TPS2829DBVT
Description	IC GATE DRVR LOW-SIDE SOT23-5
Detailed Description	Low-Side Gate Driver IC Non-Inverting SOT-23-5

This model TPS2829DBVT is available at DiGi Electronics.

DiGi Electronics offers a global database of semiconductor and electronic component datasheets.

We welcome your inquiries regarding pricing, lead time, or other product-related questions.

 [Request a Quote](#)

 [Datasheet Search](#)



Tel: +00 852-30501935

RFQ Email: Info@DiGi-Electronics.com

DiGi is a global authorized distributor of electronic components.

Purchase and inquiry

Manufacturer Product Number:

TPS2829DBVT

Series:

-

DiGi-Electronics Programmable:

Not Verified

Channel Type:

Single

Gate Type:

N-Channel MOSFET

Logic Voltage - VIL, VIH:

1V, 4V

Input Type:

Non-Inverting

Operating Temperature:

-40°C ~ 125°C (TA)

Package / Case:

SC-74A, SOT-753

Base Product Number:

TPS2829

Manufacturer:

Texas Instruments

Product Status:

Last Time Buy

Driven Configuration:

Low-Side

Number of Drivers:

1

Voltage - Supply:

4V ~ 14V

Current - Peak Output (Source, Sink):

2A, 2A

Rise / Fall Time (Typ):

14ns, 14ns

Mounting Type:

Surface Mount

Supplier Device Package:

SOT-23-5

Environmental & Export classification

RoHS Status:

ROHS3 Compliant

REACH Status:

REACH Unaffected

HTSUS:

8542.39.0001

Moisture Sensitivity Level (MSL):

1 (Unlimited)

ECCN:

EAR99

OUR CERTIFICATE

DiGi provide top-quality products and perfect service for customer worldwide through standardization, technological innovation and continuous improvement. DiGi through third-party certification, we stricly control the quality of products and services. Welcome your RFQ to

Email: Info@DiGi-Electronics.com



Tel: +00 852-30501935

RFQ Email: Info@DiGi-Electronics.com

DiGi is a global authorized distributor of electronic components.