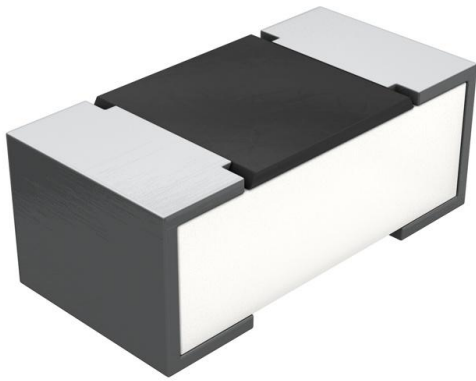


# CRCW02014K87FKED Datasheet

[www.digi-electronics.com](http://www.digi-electronics.com)



<https://www.DiGi-Electronics.com>

|                              |   |
|------------------------------|---|
| DiGi Electronics Part Number | CRCW02014K87FKED-DG   |
| Manufacturer                 | <a href="#">Vishay Dale</a>   |
| Manufacturer Product Number  | CRCW02014K87FKED  |
| Description                  | RES SMD 4.87K OHM 1% 1/20W 0201   |
| Detailed Description         | 4.87 kOhms ±1% 0.05W, 1/20W Chip Resistor 0201 (0603 Metric) Thick Film |

This model CRCW02014K87FKED is available at DiGi Electronics.

DiGi Electronics offers a global database of semiconductor and electronic component datasheets.

We welcome your inquiries regarding pricing, lead time, or other product-related questions.

 [Request a Quote](#)

 [Datasheet Search](#)



Tel: +00 852-30501935

RFQ Email: [Info@DiGi-Electronics.com](mailto:Info@DiGi-Electronics.com)

DiGi is a global authorized distributor of electronic components.

## Purchase and inquiry

Manufacturer Product Number:

CRCW02014K87FKED

Series:

CRCW

Resistance:

4.87 kOhms

Power (Watts):

0.05W, 1/20W

Features:

-

Operating Temperature:

-55°C ~ 155°C

Supplier Device Package:

0201

Height - Seated (Max):

0.010" (0.26mm)

Failure Rate:

-

Manufacturer:

Vishay Dale

Product Status:

Active

Tolerance:

±1%

Composition:

Thick Film

Temperature Coefficient:

±100ppm/°C

Package / Case:

0201 (0603 Metric)

Size / Dimension:

0.024" L x 0.012" W (0.60mm x 0.30mm)

Number of Terminations:

2

Base Product Number:

CRCW0201

## Environmental & Export classification

RoHS Status:

ROHS3 Compliant

REACH Status:

REACH Unaffected

HTSUS:

8533.21.0030

Moisture Sensitivity Level (MSL):

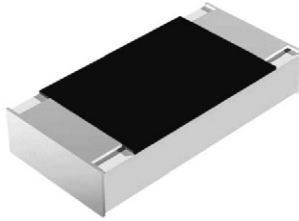
1 (Unlimited)

ECCN:

EAR99



## Lead (Pb)-Free Commodity Thick Film Chip Resistors



### FEATURES

- High volume product suitable for commercial applications
- Pure tin solder contacts on Ni barrier layer provides compatibility with lead (Pb)-free and lead containing soldering processes
- Metal glaze on high quality ceramic
- Material categorization: for definitions of compliance please see [www.vishay.com/doc?99912](http://www.vishay.com/doc?99912)



**RoHS**  
COMPLIANT  
HALOGEN  
**FREE**

| STANDARD ELECTRICAL SPECIFICATIONS   |                |                  |                         |   |                               |             |                           |          |
|--|----------------|------------------|-------------------------|---|-------------------------------|-------------|---------------------------|----------|
| MODEL  | CASE SIZE INCH | CASE SIZE METRIC | POWER RATING $P_{70}$ W | LIMITING ELEMENT VOLTAGE $U_{max. AC_{RMS}/DC}$ V | TEMPERATURE COEFFICIENT ppm/K | TOLERANCE % | RESISTANCE RANGE $\Omega$ | SERIES   |
| CRCW0201   | 0201           | RR 0603M         | 0.05                    | 30  | $\pm 100$                     | $\pm 1$     | 47.0 to 1M                | E24; E96 |
|  |                |                  |                         |   | $\pm 200$                     |             | 10.0 to 10M               |          |
|  |                |                  |                         |   | -200 / +400                   |             | 1.0 to 9.76               |          |
|  |                |                  |                         |   | $\pm 200$                     | $\pm 5$     | 10.0 to 10M               | E24      |
|  |                |                  |                         |   | -200 / +400                   |             | 1.0 to 9.1                |          |
| Zero-ohm-resistor: $R_{max.} = 50 \text{ m}\Omega$ , $I_{max.}$ at $70 \text{ }^\circ\text{C} = 1.0 \text{ A}$ |                |                  |                         |   |                               |             |                           |          |

### Notes

- These resistors do not feature a limited lifetime when operated within the permissible limits. However, resistance value drift increasing over operating time may result in exceeding a limit acceptable to the specific application, thereby establishing a functional lifetime
- Power rating depends on the max. temperature at the solder point, the component placement density and the substrate material

| TECHNICAL SPECIFICATIONS  |                  |             |
|---|------------------|-------------|
| PARAMETER   | UNIT             | CRCW0201    |
| Rated Dissipation at $70 \text{ }^\circ\text{C}$ <sup>(1)</sup> | W                | 0.05        |
| Operating Voltage $U_{max. AC_{RMS}/DC}$                        | V                | 30          |
| Insulation Voltage $U_{ins}$ (1 min)                            | V                | 50          |
| Insulation Resistance   | $\Omega$         | $> 10^9$    |
| Operating Temperature Range                                     | $^\circ\text{C}$ | -55 to +155 |
| Weight  | mg               | 0.17        |

### Note

- <sup>(1)</sup> The power dissipation on the resistor generates a temperature rise against the local ambient, depending on the heat flow support of the printed-circuit board (thermal resistance). The rated dissipation applies only if the permitted film temperature of  $155 \text{ }^\circ\text{C}$  is not exceeded



### PART NUMBER AND PRODUCT DESCRIPTION

Part Number: CRCW02011K00FNE D

C R C W 0 2 0 1 1 K 0 0 F K E D

|                   |  |   |  |                             |
|-------------------|--|---|--|-----------------------------|
| MODEL<br>CRCW0201 | VALUE<br>R = decimal<br>K = thousand<br>M = million<br>0000 = jumper | TOLERANCE<br>F = $\pm 1.0\%$<br>J = $\pm 5.0\%$<br>Z = jumper | TCR<br>K = $\pm 100$ ppm/K<br>N = $\pm 200$ ppm/K<br>X = $-200$ ppm/K / $+400$ ppm/K<br>0 = jumper | PACKAGING<br>ED<br>EE<br>EI |
|-------------------|--|---|--|-----------------------------|

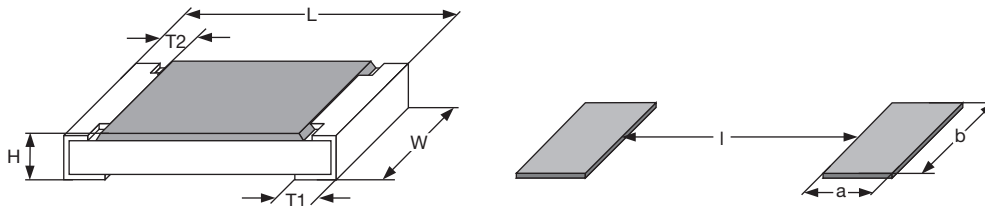
Product Description: CRCW0201 100 1K0 1 % ET7 e3

|                   |  |  |  |                                |   |
|-------------------|--|--|--|--------------------------------|---|
| CRCW0201          | 100  | 562R   | 1 %  | ET7                            | e3  |
| MODEL<br>CRCW0201 | TCR<br>$\pm 200$ ppm/K<br>$\pm 100$ ppm/K<br>$-200 / +400$ ppm/K | RESISTANCE<br>VALUE<br>1R0 = $1\ \Omega$<br>10R = $10\ \Omega$<br>10K = $10\ \text{k}\Omega$<br>1M = $1\ \text{M}\Omega$<br>OR0 = jumper | TOLERANCE<br>VALUE<br>$\pm 1\%$<br>$\pm 5\%$ | PACKAGING<br>ET2<br>ET7<br>EF4 | LEAD (Pb)-FREE<br>e3 = pure tin<br>termination finish |

### PACKAGING

| MODEL    | CODE     | QUANTITY | CARRIER TAPE                                  | WIDTH | PITCH | REEL DIAMETER |
|----------|----------|----------|---|-------|-------|---------------|
| CRCW0201 | ED = ET7 | 10 000   | Paper tape according<br>to IEC 60068-3 type I | 8 mm  | 2 mm  | 180 mm / 7"   |
|          | EI = ET2 | 20 000   |   |       |       | 254 mm / 10"  |
|          | EE = EF4 | 50 000   |   |       |       | 330 mm / 13"  |

### DIMENSIONS in millimeters



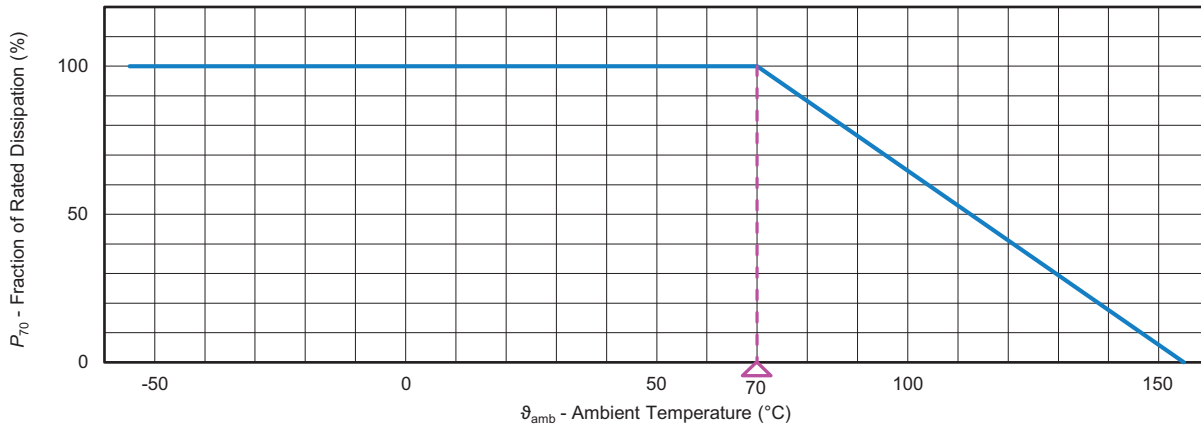
| SIZE |        | DIMENSIONS     |                |                 |                 |                 | SOLDER PAD DIMENSIONS |      |      |
|------|--------|----------------|----------------|-----------------|-----------------|-----------------|-----------------------|------|------|
| INCH | METRIC | L              | W              | H               | T1              | T2              | a                     | b    | l    |
| 0201 | 0603   | $0.6 \pm 0.03$ | $0.3 \pm 0.03$ | $0.23 \pm 0.03$ | $0.15 \pm 0.05$ | $0.10 \pm 0.05$ | 0.28                  | 0.43 | 0.23 |

#### Note

- No marking for 0201 size



## DERATING



| TEST PROCEDURES AND REQUIREMENTS |                                  |                                |   |   |
|----------------------------------|----------------------------------|--------------------------------|---|---|
| EN 60115-1<br>CLAUSE             | IEC<br>60068-2<br>TEST<br>METHOD | TEST                           | PROCEDURE   | REQUIREMENTS<br>PERMISSIBLE CHANGE ( $\Delta R$ )                                       |
|                                  |                                  |                                | Stability for product types:<br><b>CRCW0201 e3</b>  | 1 $\Omega$ to 10 M $\Omega$<br>$\pm 1\%$ ; $\pm 5\%$                                    |
| 4.5                              | -                                | Resistance                     | -   | $\pm 1\%$ ; $\pm 5\%$   |
| 4.7                              | -                                | Voltage proof                  | $U = 1.4 \times U_{ins}$ ; 60 s   | No flashover or breakdown   |
| 4.13                             | 58 (Td)                          | Solderability                  | Solder bath method;<br>Sn60Pb40<br>non activated flux;<br>(235 $\pm$ 5) °C<br>(2 $\pm$ 0.2) s       | Good tinning ( $\geq 95\%$ covered)<br>no visible damage                                |
|                                  |                                  |                                | Solder bath method;<br>Sn96.5Ag3Cu0.5<br>non-activated flux;<br>(245 $\pm$ 5) °C<br>(3 $\pm$ 0.3) s | Good tinning ( $\geq 95\%$ covered)<br>no visible damage                                |
| 4.8.4.2                          | -                                | Temperature coefficient        | (20 / -55 / 20) °C and<br>(20 / 125 / 20) °C  | $\pm 100$ ppm/K,<br>$\pm 200$ ppm/K,<br>-200 ppm/K / +400 ppm/K                         |
| 4.32                             | 21 (Uu <sub>3</sub> )            | Shear (adhesion)               | 9 N   | No visible damage   |
| 4.33                             | 21 (Uu <sub>1</sub> )            | Substrate bending              | Depth 2 mm; 3 times   | No visible damage,<br>no open circuit in bent position<br>$\pm (0.5\% R + 0.05 \Omega)$ |
| 4.19                             | 14 (Na)                          | Rapid change<br>of temperature | 30 min. at -55 °C;<br>30 min. at 125 °C   |   |
|                                  |                                  |                                | 5 cycles  | $\pm (0.5\% R + 0.05 \Omega)$   |
|                                  |                                  |                                | 1000 cycles   | $\pm (1\% R + 0.05 \Omega)$   |
| 4.23                             | -                                | Climatic sequence:             | -   | $\pm (2\% R + 0.1 \Omega)$  |
| 4.23.2                           | 2 (Ba)                           | Dry heat                       | 125 °C; 16 h  |   |
| 4.23.3                           | 30 (Db)                          | Damp heat, cyclic              | 55 °C; $\geq 90\%$ RH; 24 h; 1 cycle  |   |
| 4.23.4                           | 1 (Aa)                           | Cold                           | -55 °C; 2 h   |   |
| 4.23.5                           | 13 (M)                           | Low air pressure               | 1 kPa; (25 $\pm$ 10) °C; 1 h  |   |
| 4.23.6                           | 30 (Db)                          | Damp heat, cyclic              | 55 °C; $\geq 90\%$ RH; 24 h; 5 cycles   |   |
| 4.23.7                           | -                                | DC load                        | $U = \sqrt{P_{70} \times R} \leq U_{max.}$  |   |
| 4.25.1                           | -                                | Endurance at 70 °C             | $U = \sqrt{P_{70} \times R} \leq U_{max.};$<br>1.5 h on; 0.5 h off;                                 |   |
|                                  |                                  |                                | 70 °C; 1000 h   | $\pm (2\% R + 0.1 \Omega)$  |
|                                  |                                  |                                | 70 °C; 8000 h   | $\pm (4\% R + 0.1 \Omega)$  |



| TEST PROCEDURES AND REQUIREMENTS |                                  |  |  |   |
|----------------------------------|----------------------------------|--|--|---|
| EN 60115-1<br>CLAUSE             | IEC<br>60068-2<br>TEST<br>METHOD | TEST                                       | PROCEDURE  | REQUIREMENTS<br>PERMISSIBLE CHANGE ( $\Delta R$ ) |
|                                  |                                  |  | Stability for product types:   | 1 $\Omega$ to 10 M $\Omega$                       |
|                                  |                                  |  | <b>CRCW0201 e3</b>   |   |
| 4.18.2                           | 58 (Td)                          | Resistance to soldering heat               | Solder bath method<br>(260 $\pm$ 5) $^{\circ}$ C; (10 $\pm$ 1) s   | $\pm$ (1 % $R$ + 0.05 $\Omega$ )                  |
| 4.35                             | -                                | Flammability,<br>needle flame test         | IEC 60695-11-5;<br>10 s  | No burning after 30 s                             |
| 4.24                             | 78 (Cab)                         | Damp heat, steady state                    | (40 $\pm$ 2) $^{\circ}$ C; (93 $\pm$ 3) % RH; 56 days  | $\pm$ (2 % $R$ + 0.1 $\Omega$ )                   |
| 4.25.3                           | -                                | Endurance at upper<br>category temperature | 155 $^{\circ}$ C, 1000 h   | $\pm$ (2 % $R$ + 0.1 $\Omega$ )                   |
| 4.29                             | 45 (XA)                          | Component<br>solvent resistance            | Isopropyl alcohol;<br>50 $^{\circ}$ C; method 2  | No visible damage                                 |
| 4.22                             | 6 (Fc)                           | Vibration, endurance<br>by sweeping        | f = 10 Hz to 2000 Hz;<br>x, y, z $\leq$ 1.5 mm;<br>A $\leq$ 200 m/s <sup>2</sup> ;<br>10 sweeps per axis | $\pm$ (0.5 % $R$ + 0.05 $\Omega$ )                |

All tests are carried out in accordance with the following specifications:

- EN 60115-1, generic specification
- EN 140400, sectional specification
- EN 140401-802, detail specification
- IEC 60068-2-x, environmental test procedures

Packaging of components is done in paper tapes according to IEC 60286-3.



## Disclaimer

ALL PRODUCT, PRODUCT SPECIFICATIONS AND DATA ARE SUBJECT TO CHANGE WITHOUT NOTICE TO IMPROVE RELIABILITY, FUNCTION OR DESIGN OR OTHERWISE.

Vishay Intertechnology, Inc., its affiliates, agents, and employees, and all persons acting on its or their behalf (collectively, "Vishay"), disclaim any and all liability for any errors, inaccuracies or incompleteness contained in any datasheet or in any other disclosure relating to any product.

Vishay makes no warranty, representation or guarantee regarding the suitability of the products for any particular purpose or the continuing production of any product. To the maximum extent permitted by applicable law, Vishay disclaims (i) any and all liability arising out of the application or use of any product, (ii) any and all liability, including without limitation special, consequential or incidental damages, and (iii) any and all implied warranties, including warranties of fitness for particular purpose, non-infringement and merchantability.

Statements regarding the suitability of products for certain types of applications are based on Vishay's knowledge of typical requirements that are often placed on Vishay products in generic applications. Such statements are not binding statements about the suitability of products for a particular application. It is the customer's responsibility to validate that a particular product with the properties described in the product specification is suitable for use in a particular application. Parameters provided in datasheets and / or specifications may vary in different applications and performance may vary over time. All operating parameters, including typical parameters, must be validated for each customer application by the customer's technical experts. Product specifications do not expand or otherwise modify Vishay's terms and conditions of purchase, including but not limited to the warranty expressed therein.

Hyperlinks included in this datasheet may direct users to third-party websites. These links are provided as a convenience and for informational purposes only. Inclusion of these hyperlinks does not constitute an endorsement or an approval by Vishay of any of the products, services or opinions of the corporation, organization or individual associated with the third-party website. Vishay disclaims any and all liability and bears no responsibility for the accuracy, legality or content of the third-party website or for that of subsequent links.

Vishay products are not designed for use in life-saving or life-sustaining applications or any application in which the failure of the Vishay product could result in personal injury or death unless specifically qualified in writing by Vishay. Customers using or selling Vishay products not expressly indicated for use in such applications do so at their own risk. Please contact authorized Vishay personnel to obtain written terms and conditions regarding products designed for such applications.

No license, express or implied, by estoppel or otherwise, to any intellectual property rights is granted by this document or by any conduct of Vishay. Product names and markings noted herein may be trademarks of their respective owners.

## OUR CERTIFICATE

DiGi provide top-quality products and perfect service for customer worldwide through standardization, technological innovation and continuous improvement. DiGi through third-party certification, we strictly control the quality of products and services. Welcome your RFQ to

Email: [Info@DiGi-Electronics.com](mailto:Info@DiGi-Electronics.com)



Tel: +00 852-30501935

RFQ Email: [Info@DiGi-Electronics.com](mailto:Info@DiGi-Electronics.com)

DiGi is a global authorized distributor of electronic components.